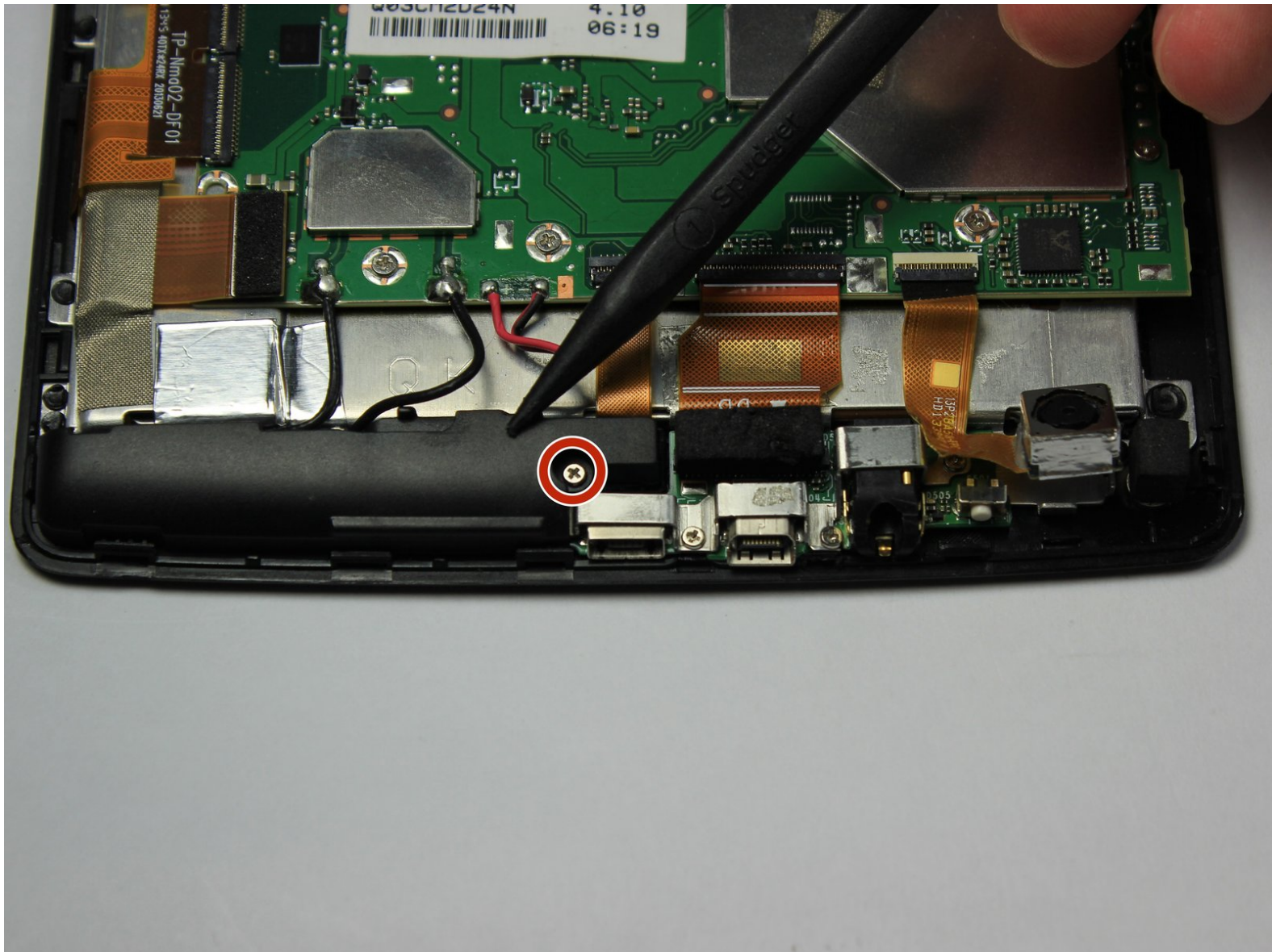




HP Slate 7 Extreme 4400US Top Speaker Replacement

This guide will present the steps needed to replace the top speaker on the HP Slate 7 Extreme 4400 US tablet.

Written By: Brandon Ko



INTRODUCTION

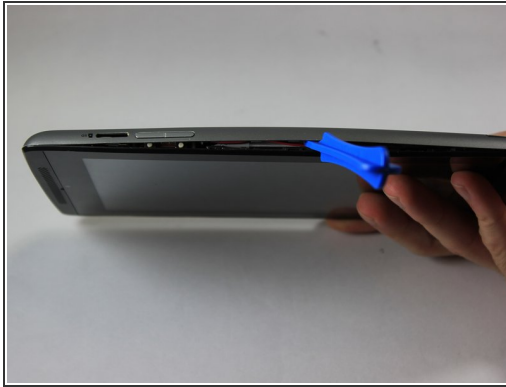
A defective top speaker is going to be replaced with completion of this guide.



TOOLS:

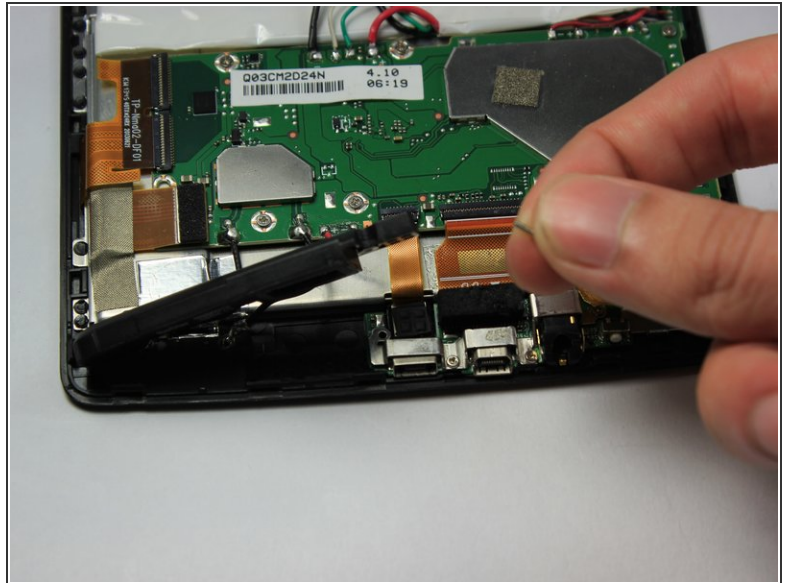
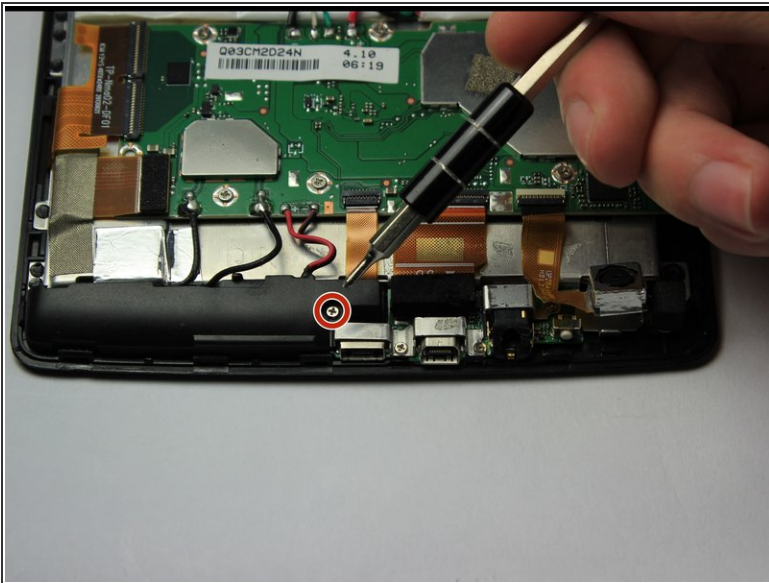
- [iFixit Opening Tools](#) (1)
 - [Phillips #00 Screwdriver](#) (1)
 - [Flush Wire Cutters](#) (1)
 - [Soldering Iron](#) (1)
-

Step 1 — Back Cover



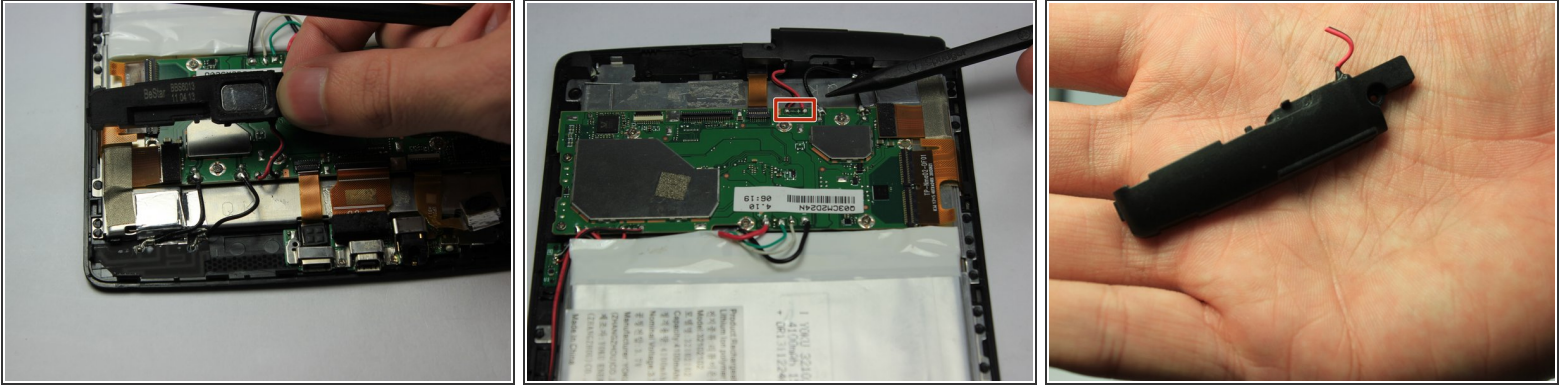
- Use the plastic opening tool to separate the back cover from the tablet. Carefully use the tool to pry open the sides, going around the entire tablet to lift the sides up.
- Once all sides have been pried up, pull the cover off and place it to the side.

Step 2 — Top Speaker



- Use the PH #000 phillips screw bit to remove one 5.0 mm screw.

Step 3



- Gently pull the entire black housing away from device.
- Locate where the speakers' wires are connected to the motherboard.
- Using wire cutters, sever the wires connecting the speaker to the motherboard. Strip the wires with a wire stripper and fashion the new wires to the old ones connected to the motherboard to reconnect.
- ⓘ You may use a soldering tool to disconnect the wires from the motherboard and to reconnect the new wires back to the motherboard.

To reassemble your device, follow these instructions in reverse order.