



HP Slate 7 Extreme 4400US Bottom Speaker Replacement

This guide will present the steps needed to replace the bottom speaker on the HP Slate 7 Extreme 4400 US tablet.

Written By: Brandon Ko



INTRODUCTION

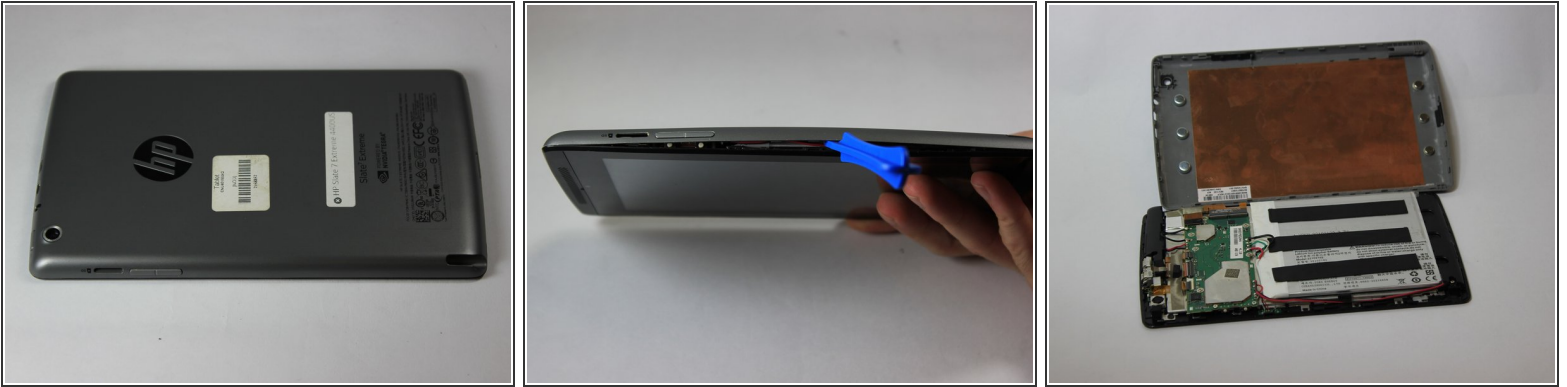
This replacement will require caution, when connecting live wires.



TOOLS:

- [iFixit Opening Tools](#) (1)
 - [Spudger](#) (1)
 - [Phillips #00 Screwdriver](#) (1)
 - [Flush Wire Cutters](#) (1)
 - [Soldering Iron](#) (1)
-

Step 1 — Back Cover



- Use the plastic opening tool to separate the back cover from the tablet. Carefully use the tool to pry open the sides, going around the entire tablet to lift the sides up.
- Once all sides have been pried up, pull the cover off and place it to the side.

Step 2 — Bottom Speaker



- Locate the wires connecting the bottom speaker to the motherboard. The wires will be running alongside the battery
- Using the PH #000 screw bit, unscrew the two 5.0 mm screws holding the bottom speaker in place

Step 3



- Locate where the speakers' wires are connected to the motherboard.
- Using a pair of wire cutters, cut the wires connecting the speaker to the motherboard. Use a wire stripper to expose the wire to connect it with the wires of the new speaker.
- ⓘ You can also use a soldering tool to disconnect the wires from the motherboard and then connect the wires of the new speaker using the soldering tool.

To reassemble your device, follow these instructions in reverse order.