



HP Slate 7 Extreme 4400US Battery Replacement

This guide will present the steps needed to replace the battery replacement on the HP Slate 7 Extreme 4400 US tablet.

Written By: Brandon Ko



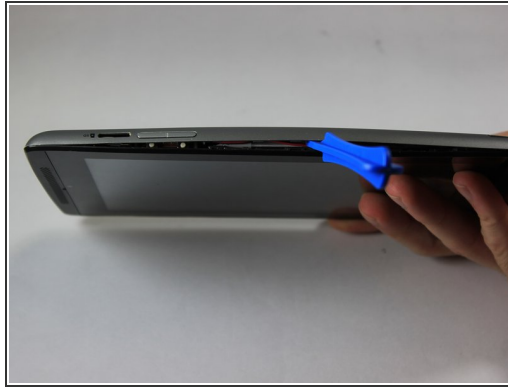
INTRODUCTION

Replacing the battery is intensive repair, make sure to be careful when cutting and soldering the wires.

TOOLS:

- [iFixit Opening Tools](#) (1)
 - [Spudger](#) (1)
 - [Soldering Iron](#) (1)
 - [Flush Wire Cutters](#) (1)
 - [Phillips #000 Screwdriver](#) (1)
-

Step 1 — Back Cover



- Use the plastic opening tool to separate the back cover from the tablet. Carefully use the tool to pry open the sides, going around the entire tablet to lift the sides up.
- Once all sides have been pried up, pull the cover off and place it to the side.

Step 2 — Battery



- Cut the battery connectors one by one using wire cutters.
 - ⚠ Do not cut all the wires at the same time; you risk blowing up the battery or destroying the motherboard!
- After disconnecting the battery, take the new battery and use wire connectors to connect to the motherboard.
- ⓘ You may use a soldering tool to disconnect the wires from the motherboard, and to also soldering the wires for the replacement battery onto the motherboard.

To reassemble your device, follow these instructions in reverse order.