



Porter Cable 690LR Power Switch Replacement

This guide will show you the steps to replace the power switch on the Porter Cable 690LR Router.

Written By: Jaymes Ullrich



INTRODUCTION

The power switch comes off of the router as a component attached to the black electrical casing around it. This guide will teach you how to remove that part.



TOOLS:

- [Metal Spudger](#) (1)
- [Heavy-Duty Spudger](#) (1)
- [T25 Torx Screwdriver](#) (1)



PARTS:

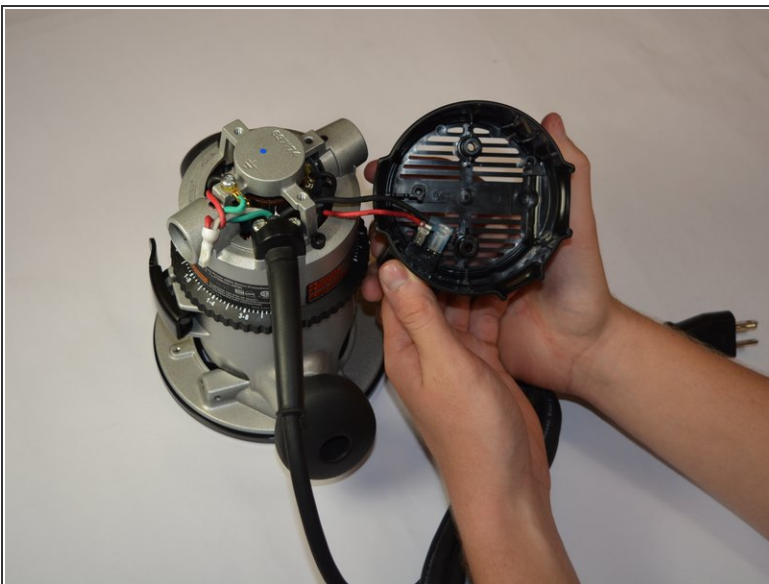
- [Power Switch](#) (1)

Step 1 — Power Switch




- Use a Torx screwdriver to unscrew the 25.4 mm screws found at the top of the model.

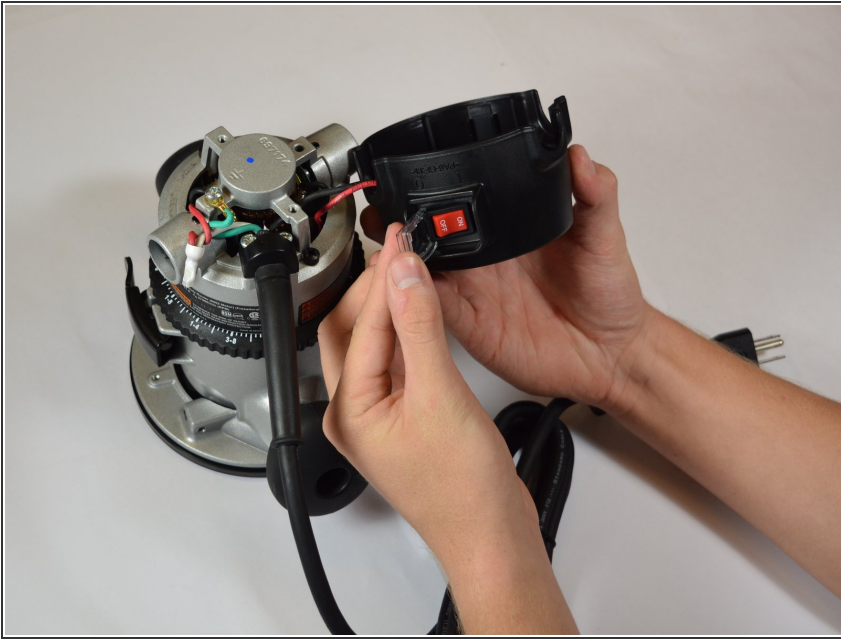
Step 2



- Remove the top by gently lifting the cover from router body.

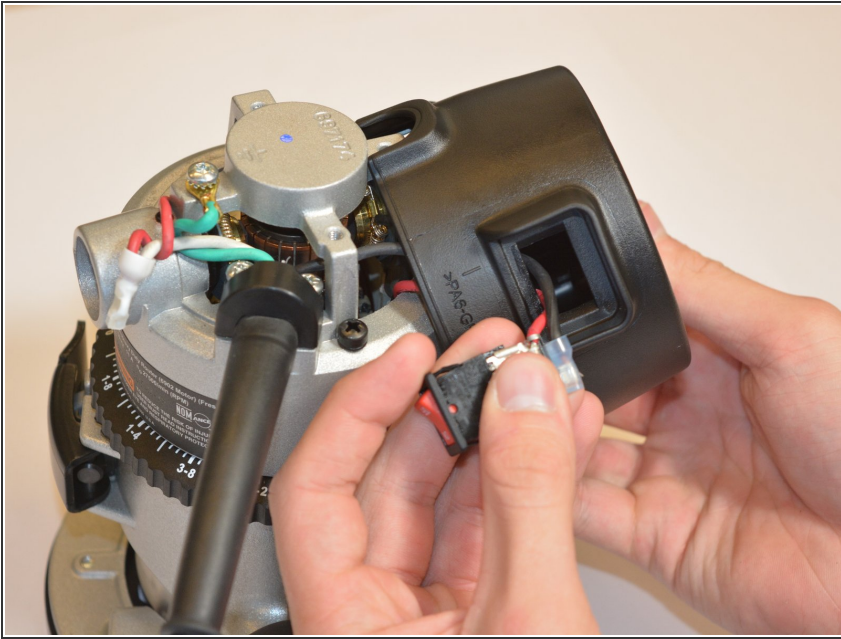
 Be careful when pulling the top from its place; wires connect the switch to the electrical cord and could be pulled loose or damaged.

Step 3



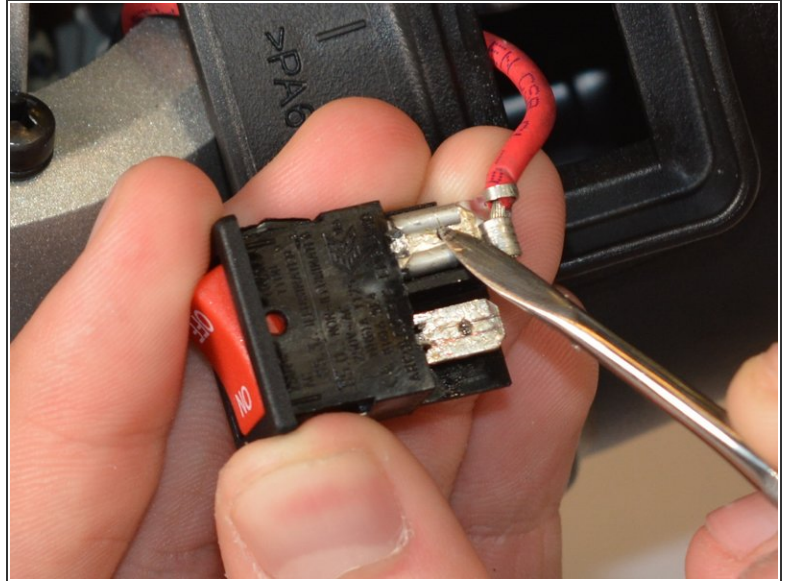
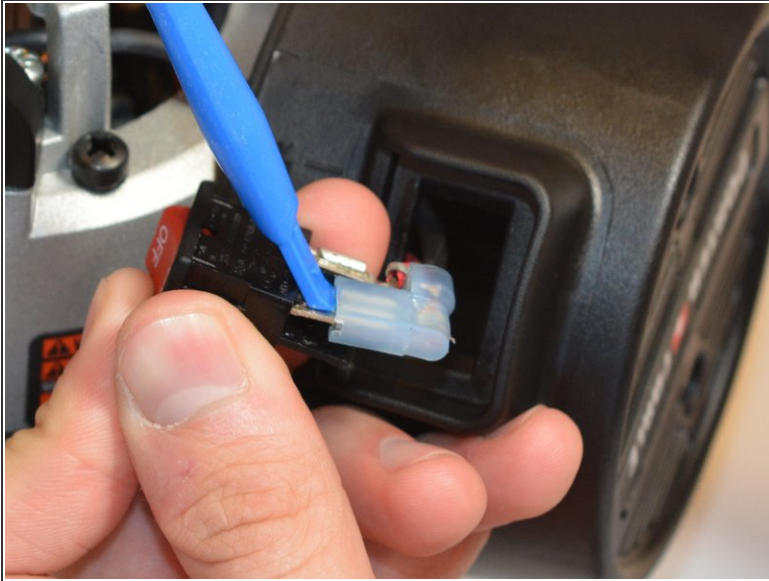
- Use a spudger to pull off the plastic covering of the power switch.
- ⓘ Don't be afraid to really pry underneath the plastic (no components of the router will be damaged if you do so).

Step 4



- Push the power switch through the top of the router. The power switch should now be completely detached from the router (besides the wire connections).

Step 5



- Find the wire plugs which are attached to the power switch. These connections are located at the back of the plastic box that houses the switch.
- Use the spudger to carefully loosen the metal and rubber coverings, and detach the connections from the switch.
- ⓘ While some force is needed in order to successfully pull the connections free, have care in making sure that you don't damage any of the metal components. If needed you may carefully use a metal spudger instead of a plastic opening tool.

To reassemble your device, follow these instructions in reverse order.