



Written By: Omir Rosado



INTRODUCTION

In this guide, we outline how to properly disassemble this device and replace the speaker.



TOOLS:

- [Tweezers](#) (1)
 - [T5 Torx Screwdriver](#) (1)
 - [Heavy-Duty Spudger](#) (1)
 - [iFixit Opening Tool](#) (1)
-

Step 1 — Motherboard



- Insert the plastic opening tool behind the rear case to free the clips holding the case together.
- Work your way around the device to free all the clips.

Step 2



- Once all clips have been released, remove the back case to reveal the inside of the device.

Step 3



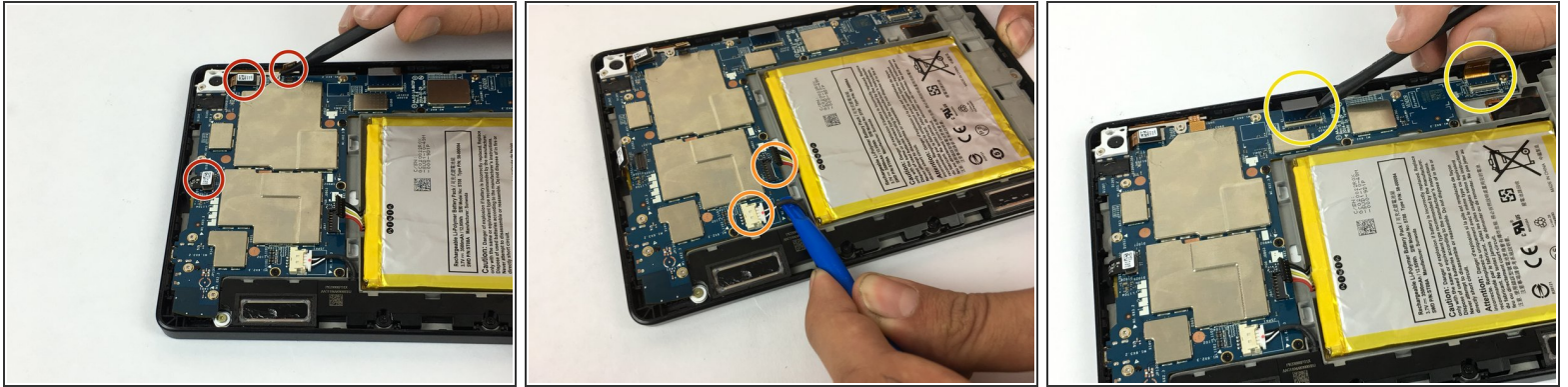
- Remove the nine silver screws located around the motherboard with the T5 Torx screwdriver.

Step 4



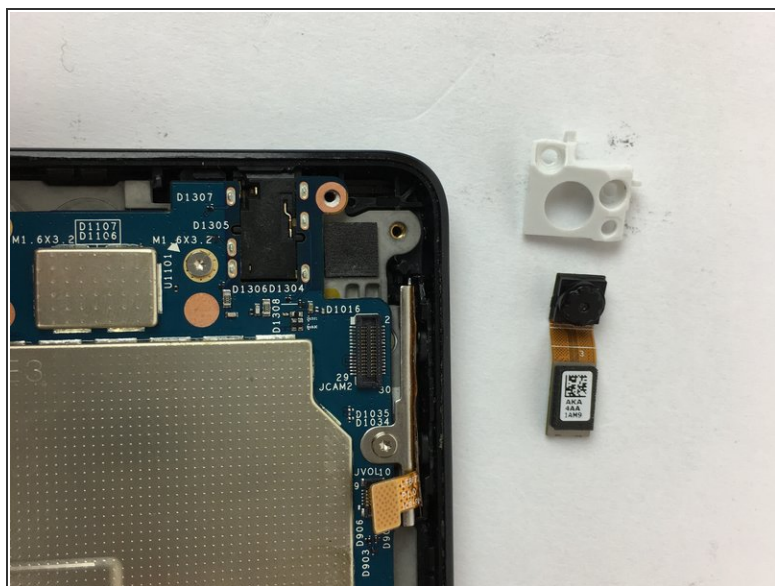
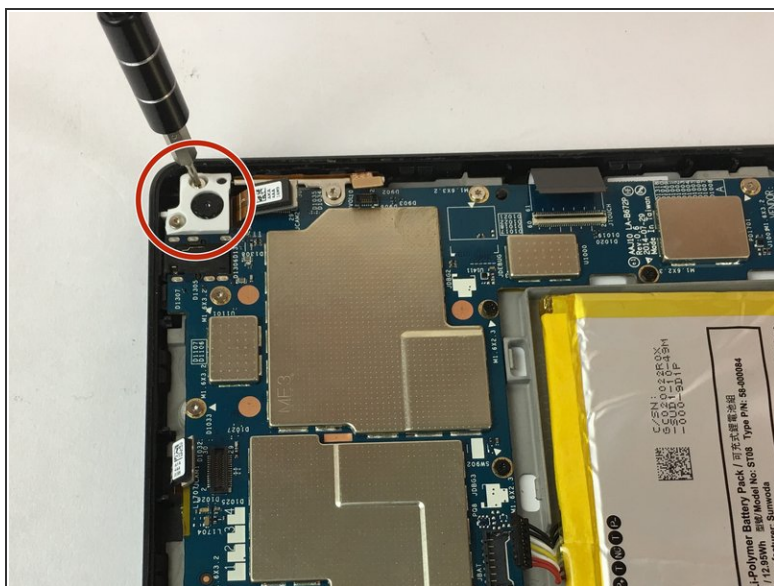
- Remove the six black screws located around the battery and the speaker with the T5 Torx screwdriver.
- Make your way around the battery and speaker to remove all of them.

Step 5



- Carefully unplug the three wire connections by placing a plastic spudger under the connections and lifting up.
- Disconnect the battery and speaker connections by placing the round handle spudger under the wires and lifting up and out.
- Disconnect the display connections from the motherboard by using the plastic spudger to lift the clamp holding the ribbon cable. Then, using the tweezers, grab the ribbon wire and pull away from the motherboard.

Step 6



- Remove the two screws holding the rear camera in place using the T5 Torx screwdriver.
- Once freed from the screws, gently lift and remove the rear camera.

⚠ The camera lens is sensitive. Be careful when removing and handling the rear camera.

Step 7



- Now the motherboard is free to be removed.
- Lift the motherboard up to remove it as shown in the picture.

Step 8 — Speaker



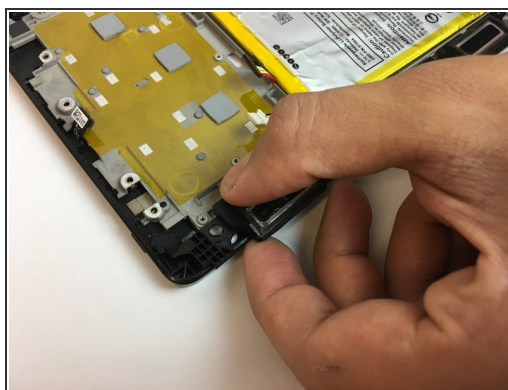
- Remove the single silver screw with the T5 Torx screwdriver.

Step 9



- Remove the two black screws using the T5 Torx screwdriver.

Step 10



- Gently pry the speaker from the device with the iFixit opening tool.
- ⓘ If the speaker does not immediately pop out, grab it by the top and slide it out sideways away from the device, while applying a slight upward force.
- Remove the speaker.