



INTRODUCTION

In this guide, we outline how to properly disassemble this device and replace the speaker.

TOOLS:

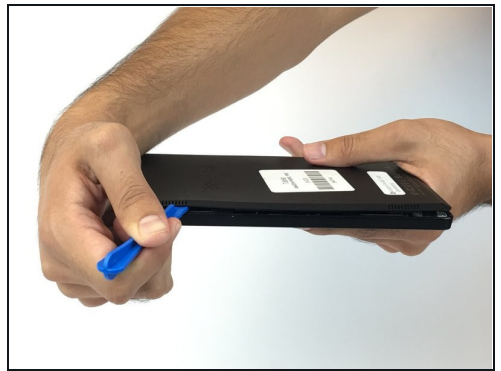
[Tweezers](#) (1)

[T5 Torx Screwdriver](#) (1)

[Heavy-Duty Spudger](#) (1)

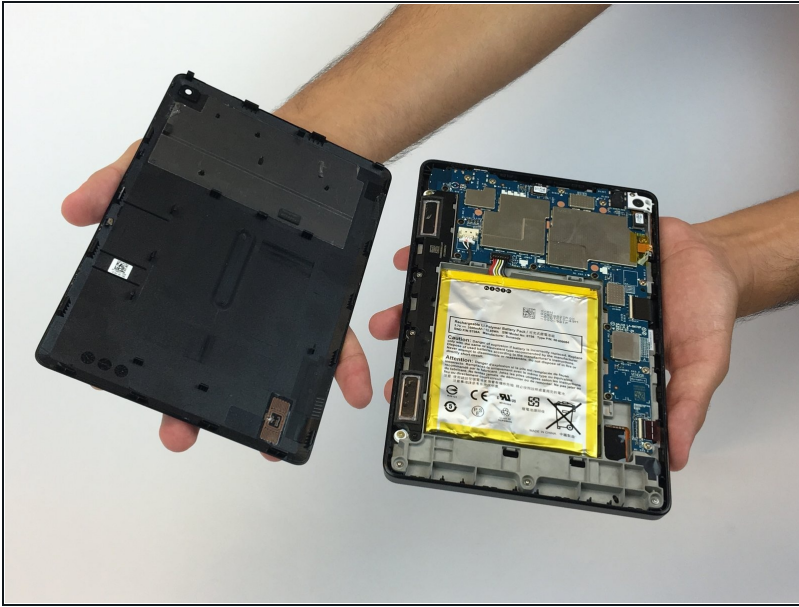
[iFixit Opening Tool](#) (1)

Step 1 — Motherboard



- Insert the plastic opening tool behind the rear case to free the clips holding the case together.
- Work your way around the device to free all the clips.

Step 2



- Once all clips have been released, remove the back case to reveal the inside of the device.

Step 3



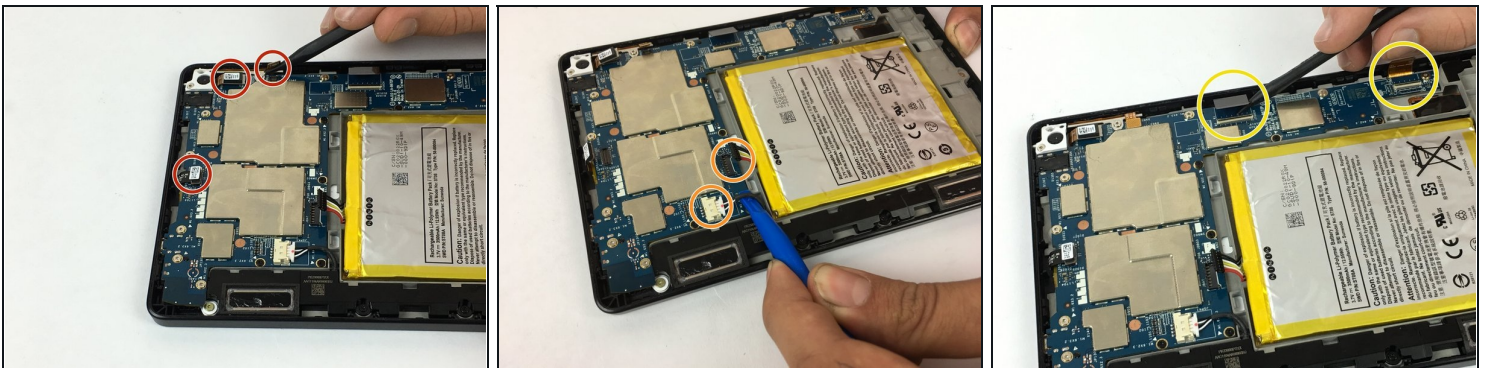
- Remove the nine silver screws located around the motherboard with the T5 Torx screwdriver.

Step 4



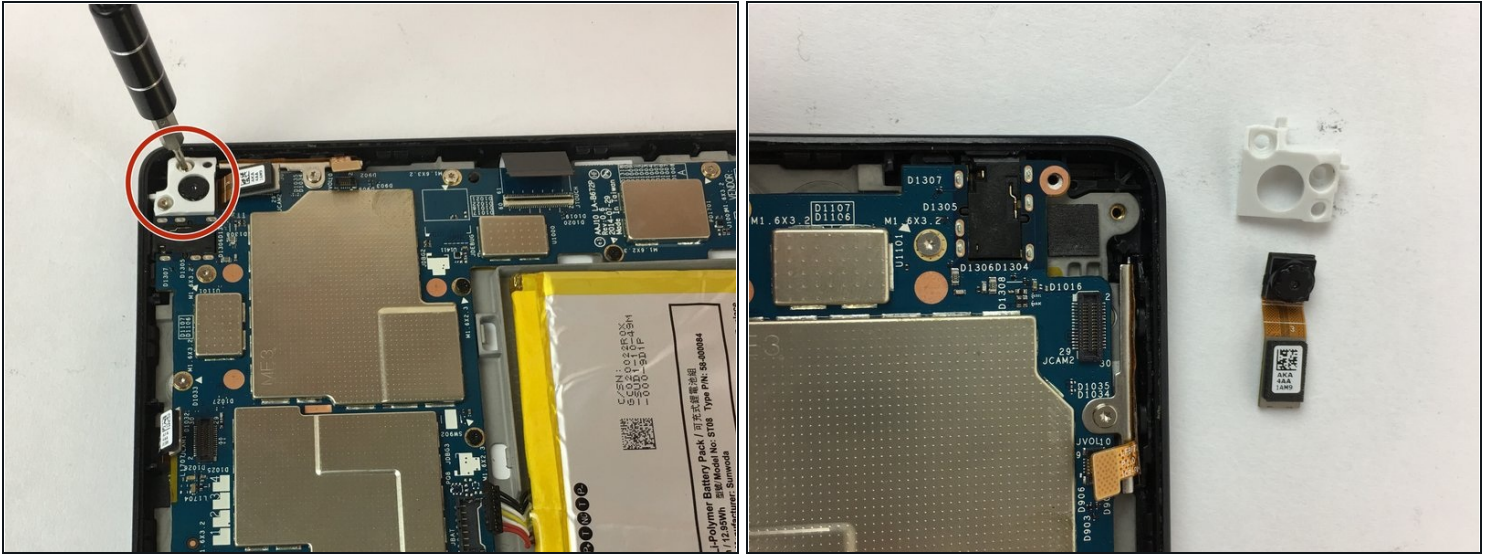
- Remove the six black screws located around the battery and the speaker with the T5 Torx screwdriver.
- Make your way around the battery and speaker to remove all of them.

Step 5



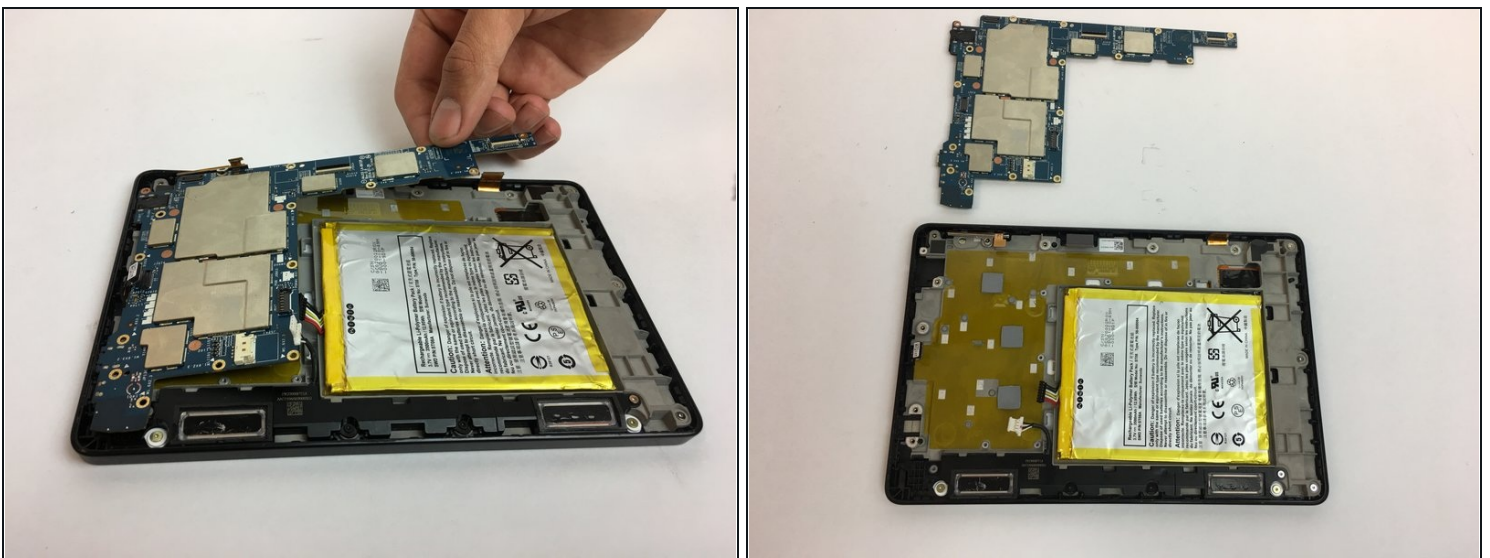
- Carefully unplug the three wire connections by placing a plastic spudger under the connections and lifting up.
- Disconnect the battery and speaker connections by placing the round handle spudger under the wires and lifting up and out.
- Disconnect the display connections from the motherboard by using the plastic spudger to lift the clamp holding the ribbon cable. Then, using the [tweezers](#), grab the ribbon wire and pull away from the motherboard.

Step 6



- Remove the two screws holding the rear camera in place using the T5 Torx screwdriver.
- Once freed from the screws, gently lift and remove the rear camera.
⚠ The camera lens is sensitive. Be careful when removing and handling the rear camera.

Step 7



- Now the motherboard is free to be removed.
- Lift the motherboard up to remove it as shown in the picture.

Step 8 — Speaker



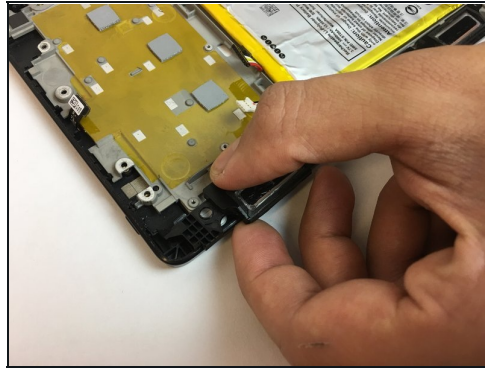
- Remove the single silver screw with the T5 Torx screwdriver.

Step 9



- Remove the two black screws using the T5 Torx screwdriver.

Step 10



- Gently pry the speaker from the device with the iFixit opening tool.
 - ① If the speaker does not immediately pop out, grab it by the top and slide it out sideways away from the device, while applying a slight upward force.
 - Remove the speaker.
-