



Oster 3905 Retractable Cord Replacement

Replace the power cord when it is no longer self-retracting.

Written By: Adam Dierkes



INTRODUCTION

If your Oster 3905 cord isn't retracting like the yo-yo you secretly still use, it may be time to replace it. While this replacement guide is pretty straight forward - watch out! There is a nasty little spring that will try to pop out and blind you.



TOOLS:

- [Phillips #2 Screwdriver](#) (1)
 - [JIS Driver Set](#) (1)
 - [Phillips #1 Screwdriver](#) (1)
 - [Metal Spudger](#) (1)
-

Step 1 — Slot Levers



- Firmly grip your hand around the slot lever.

Step 2



- Stabilize the toaster by placing your hand on top.

Step 3



- Forcefully pull the slot lever away from the toaster by keeping parallel to the table.

Step 4



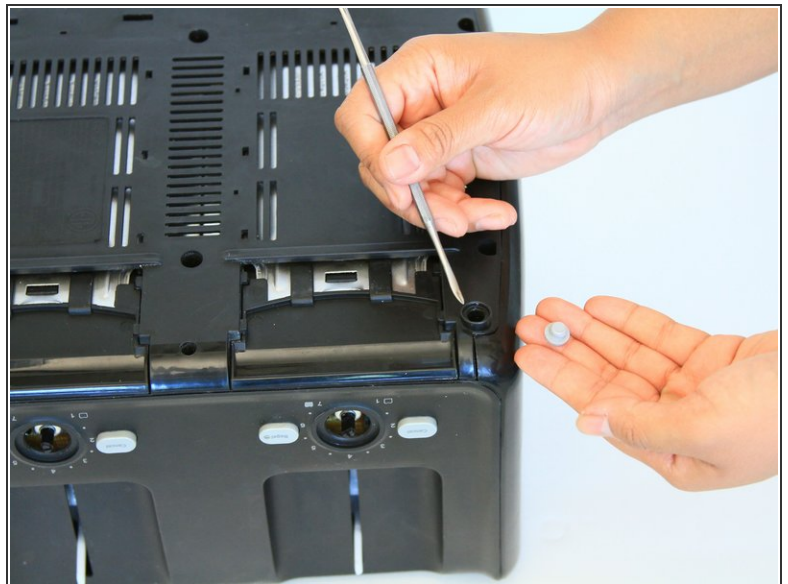
- Both slot levers can be removed.

Step 5 — Outer Shell



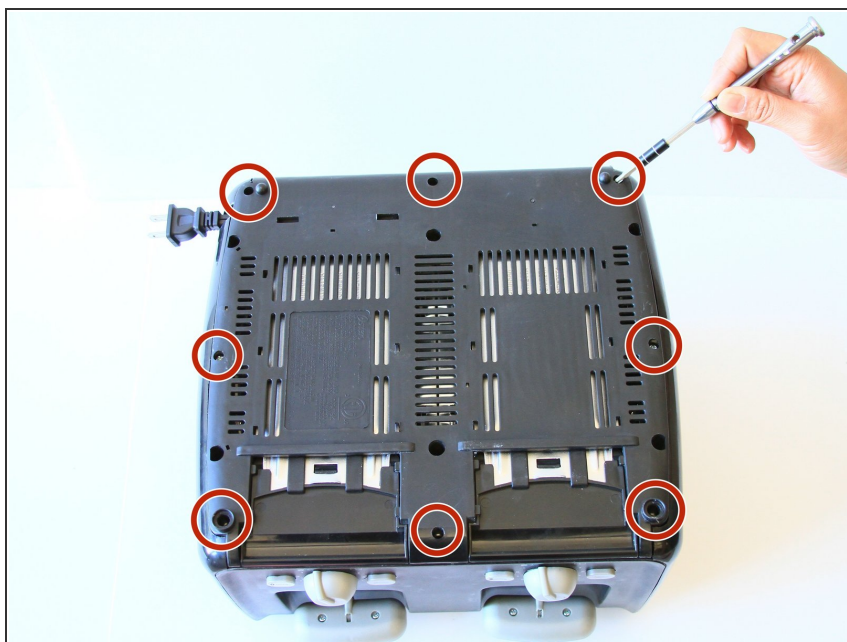
- Place the toaster upside down so the bottom is facing the ceiling.

Step 6



- Take off both rubber feet using a small metal spudger.
- Wedge a spudger under the feet and pull up to pop off.

Step 7



- Use a PH#2 screw bit to remove eight 12mm screws that are located around the perimeter.

i There are two screws under the rubber feet.

Step 8



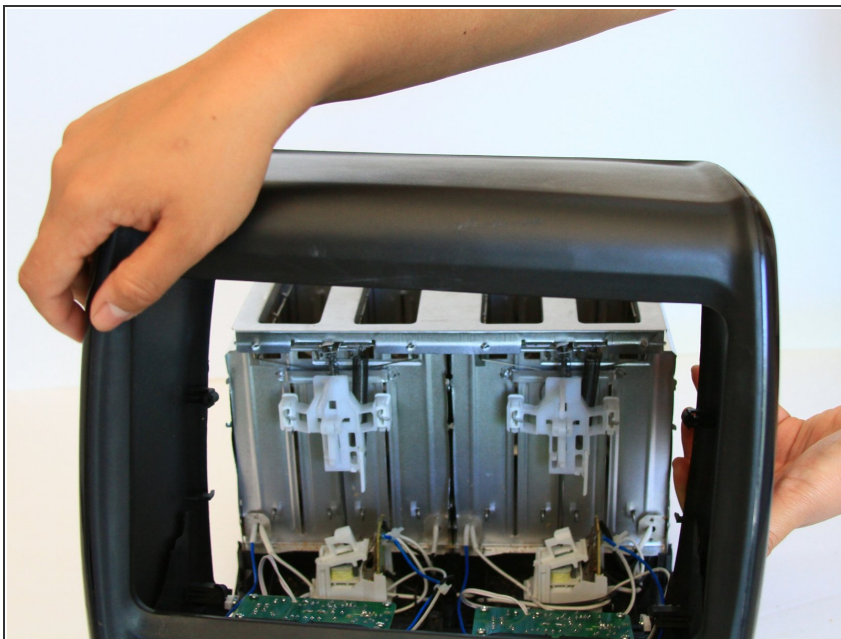
- Place the toaster right side up.

Step 9



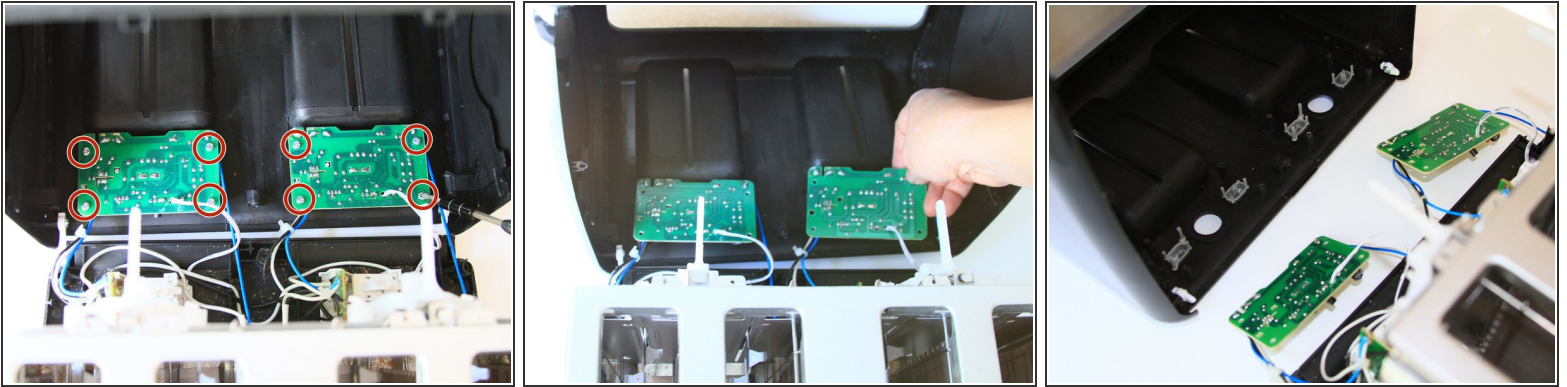
- Grab the outer shell firmly and pull up towards the face of the toaster.

Step 10



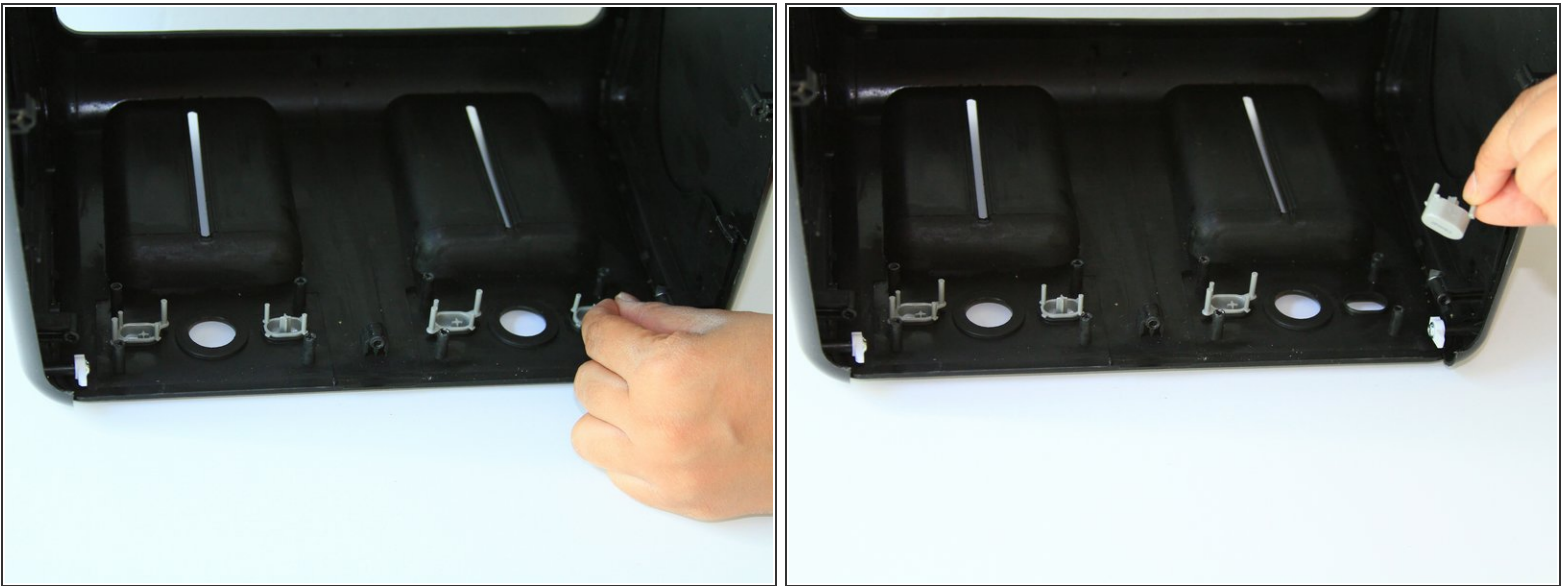
- For this part, you might need to wiggle the toaster to get the outer shell off.
- ⓘ The shell will not completely come off until the motherboard is removed in the next step.

Step 11



- Use a J1 screw bit to unscrew eight 8mm screws from the motherboard.

Step 12



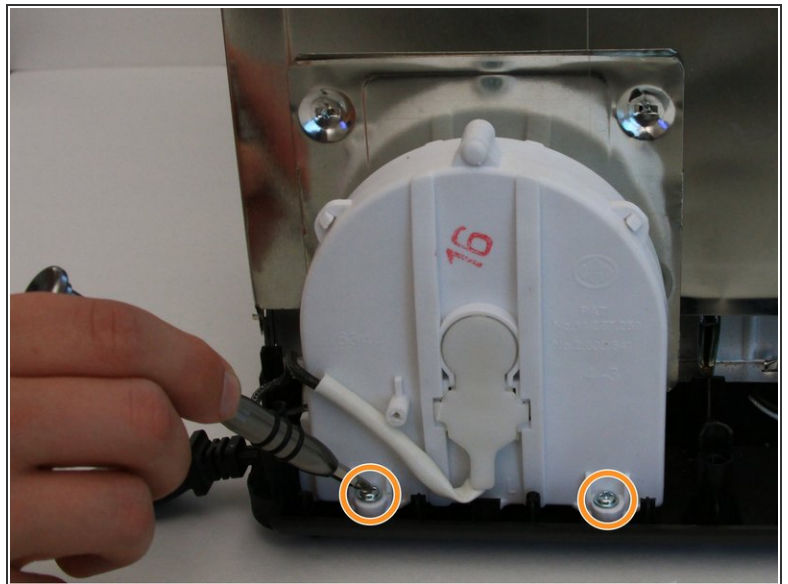
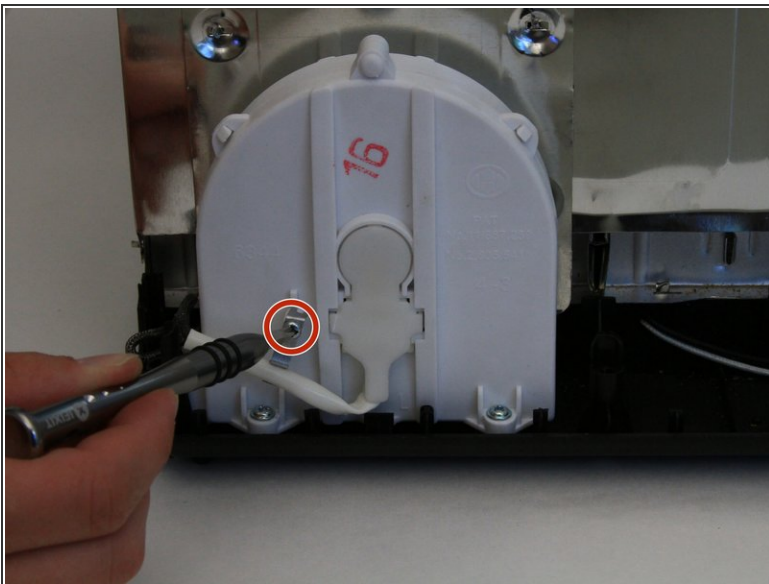
- Take out the grey “cancel” and “bagel” buttons from the shell.

Step 13 — Retractable Cord



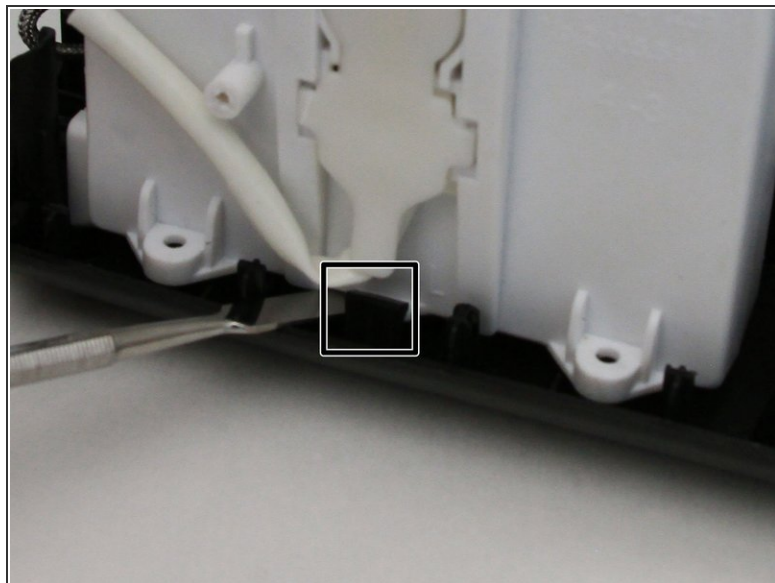
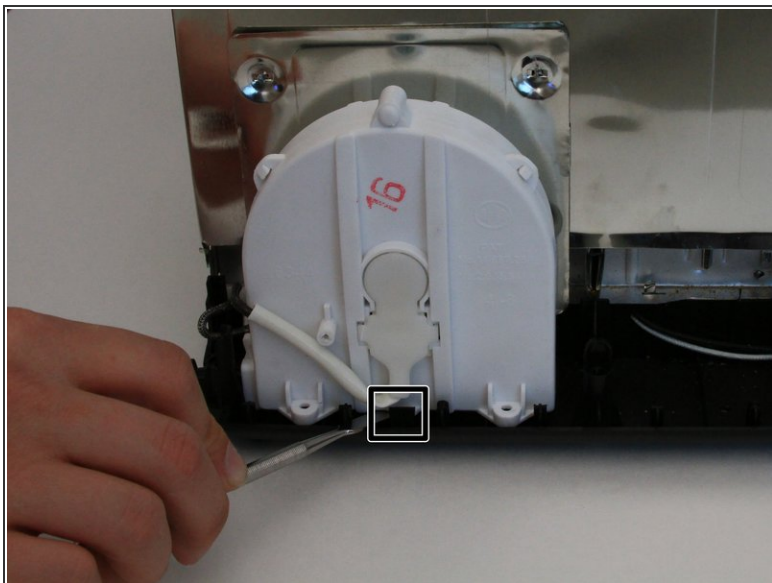
- Rotate the toaster so that the back is facing towards you.

Step 14



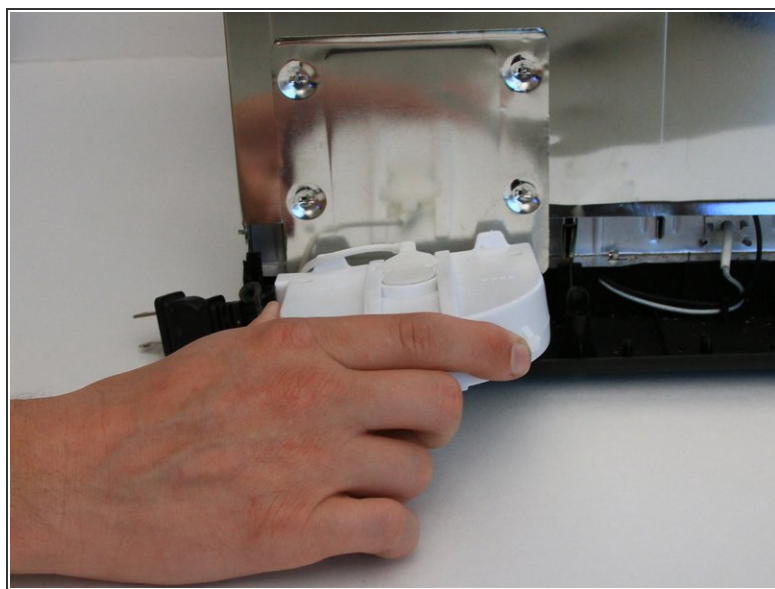
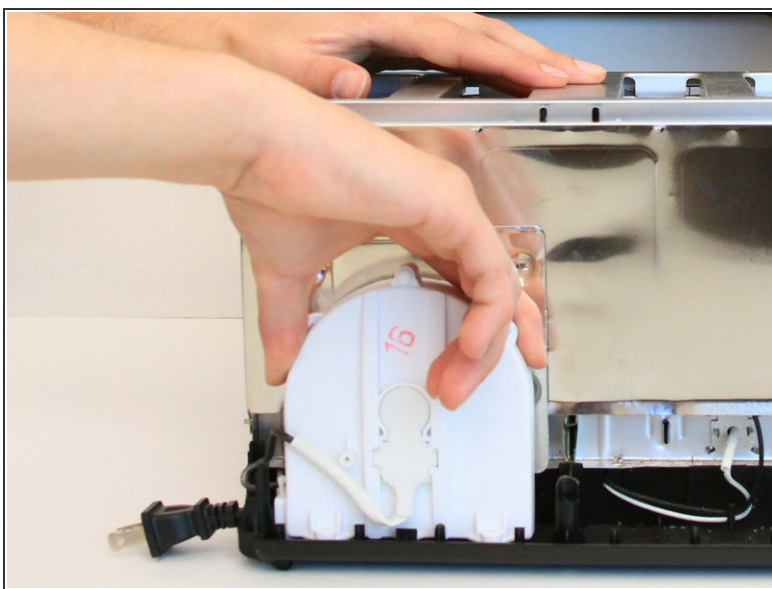
- Use the PH#1 bit to remove one 8mm screw located above the wire on the casing.
- Then use the same screw bit to remove two 10mm screws found at the bottom.

Step 15



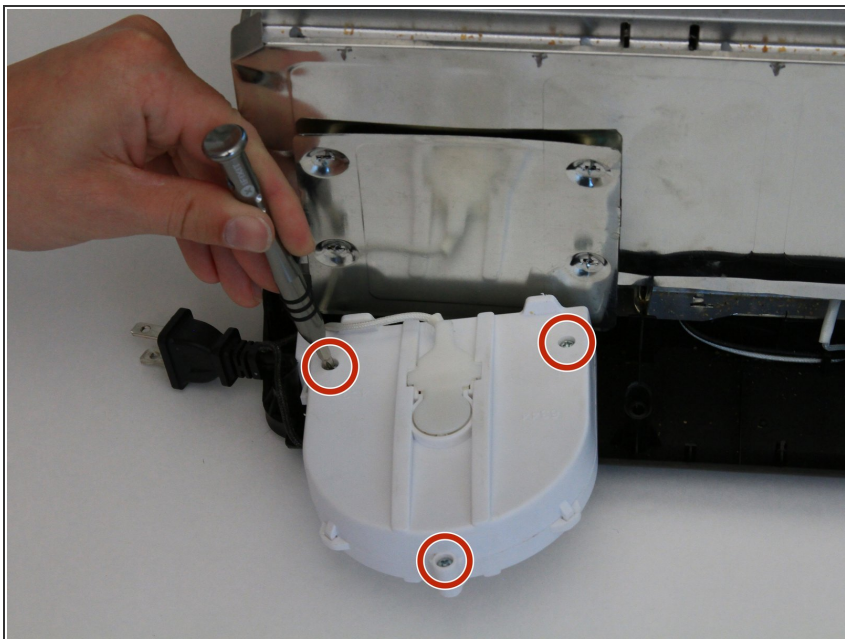
- Using the metal spudger, pry next to the black clip found at the base of the toaster and the casing.
- Push down to separate the casing from the toaster.

Step 16



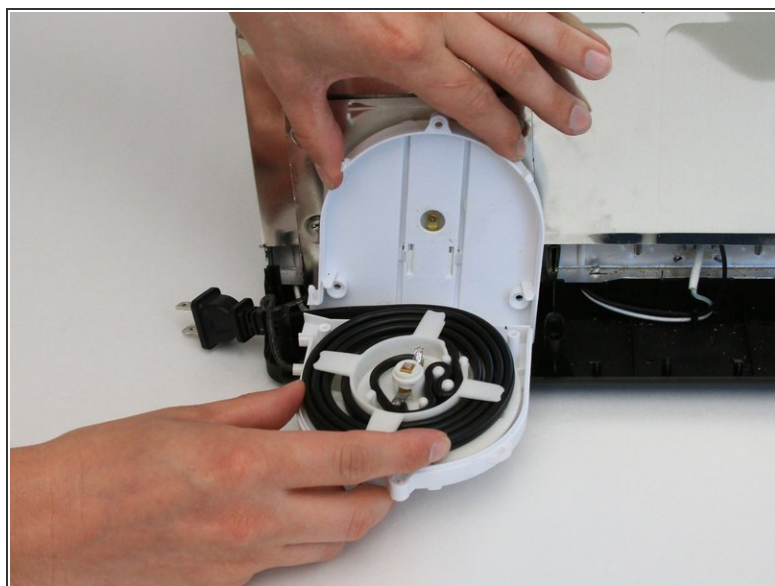
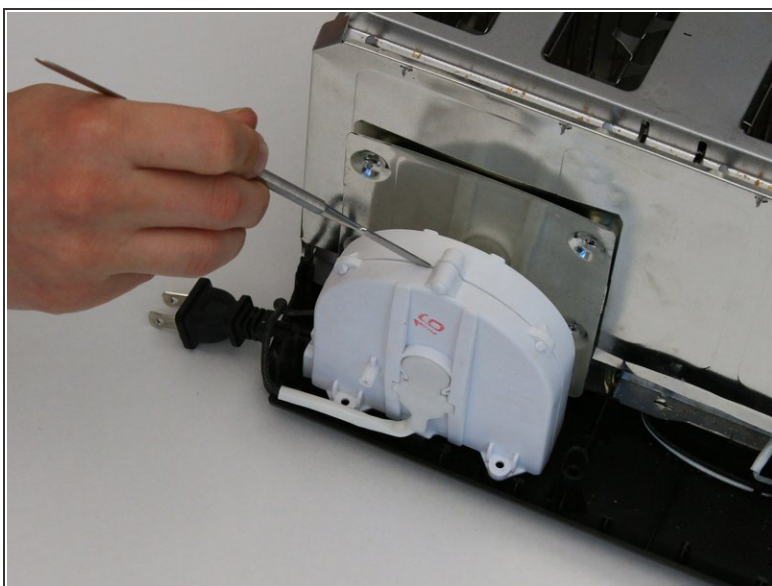
- Gently tilt the casing towards the toaster as you pull up from the base.

Step 17




- Use the PH#1 bit to remove the three 8mm screws located on the back side of the casing.

Step 18



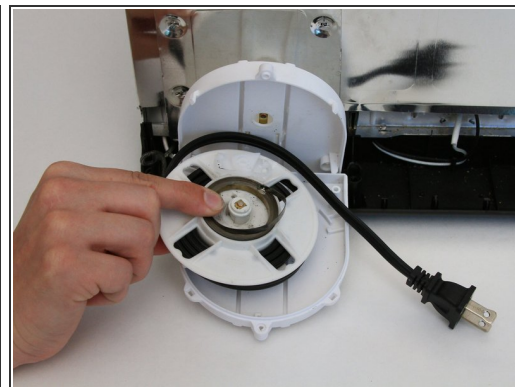
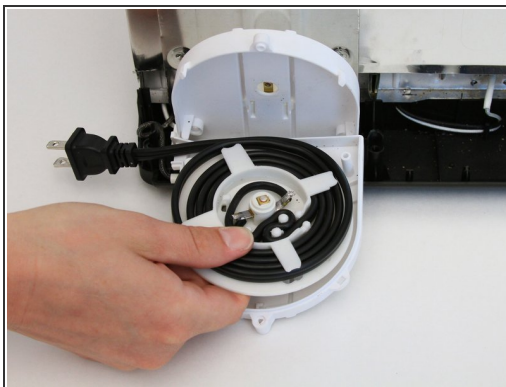
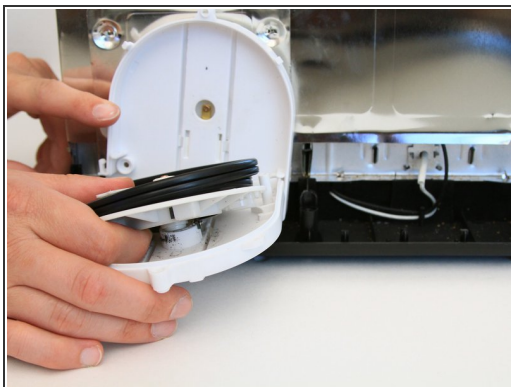
 When opening the casing a metal spring may suddenly pop out.

- Use the metal spudger to pry open the two halves of the casing.

 If you are having some trouble only using the metal spudger do not be afraid of using your fingers to pry the casing apart.

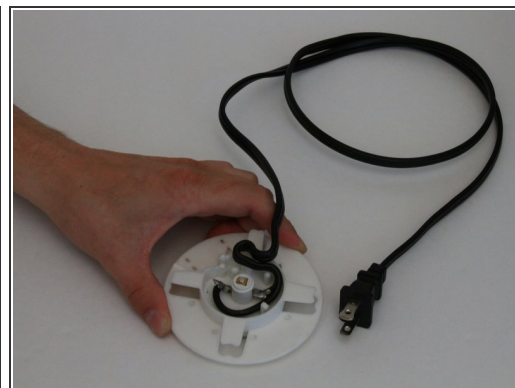
This document was generated on 2020-11-14 07:05:44 PM (MST).

Step 19



- Carefully remove the spool keeping your fingers on either side of the casing.
- ⓘ Tape down the metal spring to keep it from unraveling out of place.

Step 20



- Carefully unwind the power cord from the spool.

To reassemble your device, follow these instructions in reverse order.