



Visual Land Prestige Elite 7Q LCD Screen Replacement

Complete the following guide to replace a...

Written By: Sabrina Scholten



INTRODUCTION

Complete the following guide to replace a broken LCD screen on your tablet.

TOOLS:

[iFixit Opening Tool](#) (1)

[Plastic Cards](#) (1)

[Metal Spudger Set](#) (1)

[Phillips #000 Screwdriver](#) (1)

Step 1 — LCD Screen



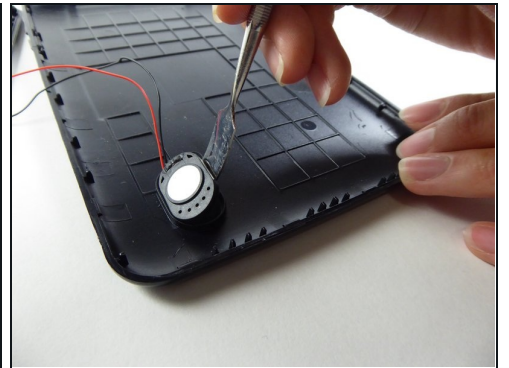
- At the bottom of the tablet, remove the two 3.6mm screws with a Phillips #000 screwdriver.

Step 2



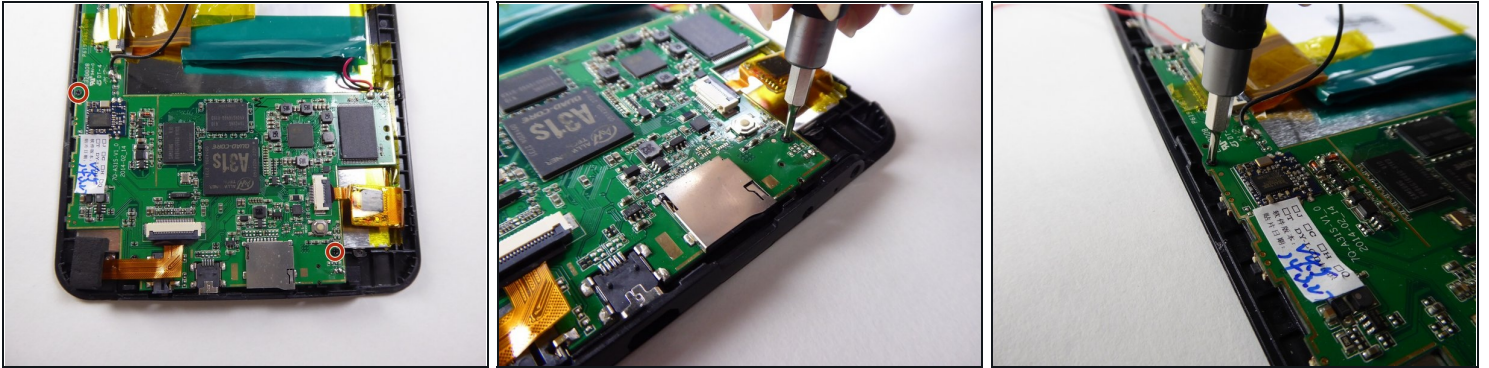
- Wedge a plastic opening tool into the edges of the tablet to pry it open.

Step 3



- Wedge a curved metal spudger to remove the speaker.

Step 4



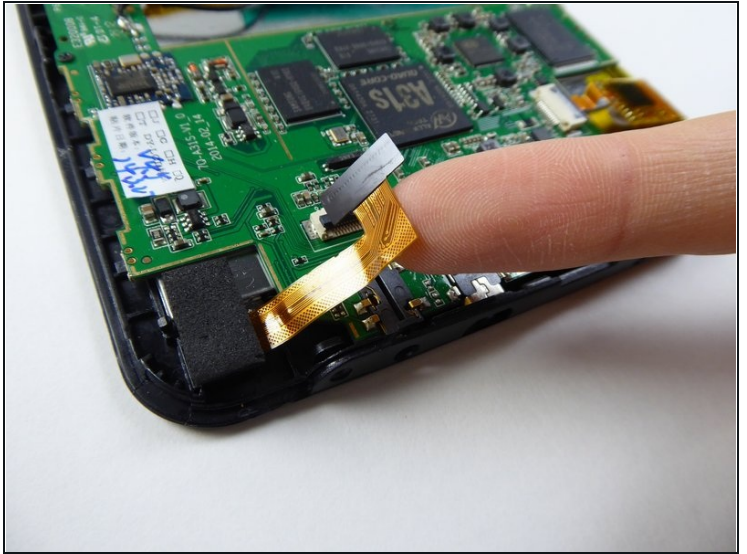
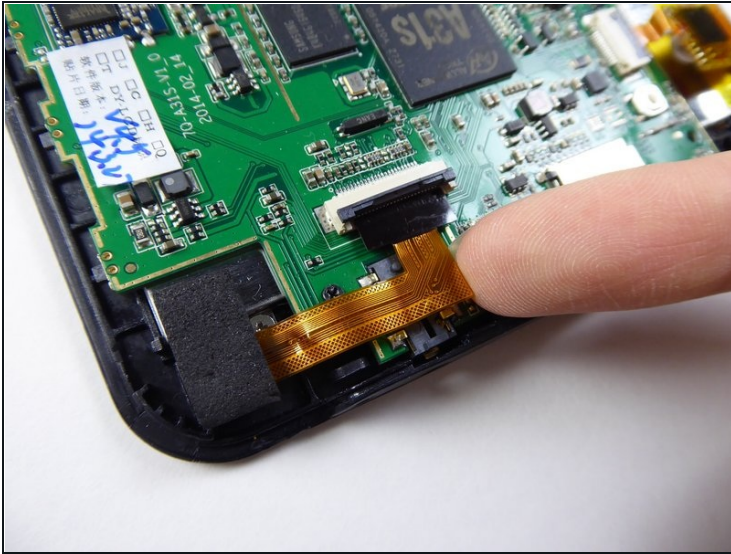
- Use a Phillips #000 screwdriver to remove the two 3.6mm screws.

Step 5



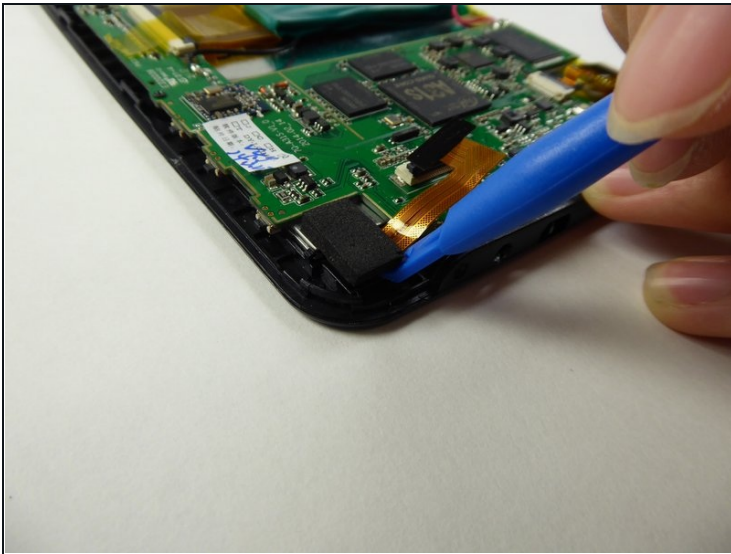
- Use a plastic opening tool to lift the black tab.

Step 6



- Carefully remove the ribbon cable from the black tab.

Step 7



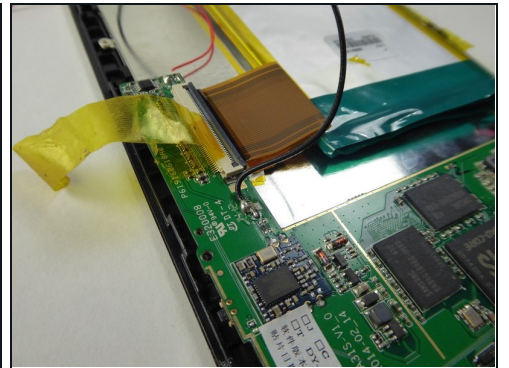
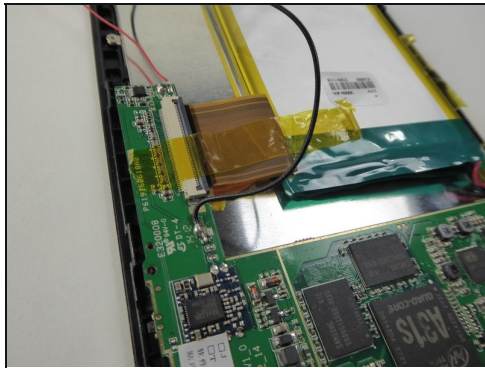
- Use a plastic opening tool to remove the camera.

Step 8



- Use a Phillips #000 screwdriver to remove the 3.6mm screw.

Step 9



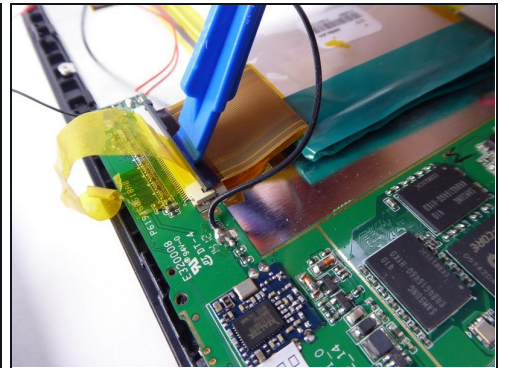
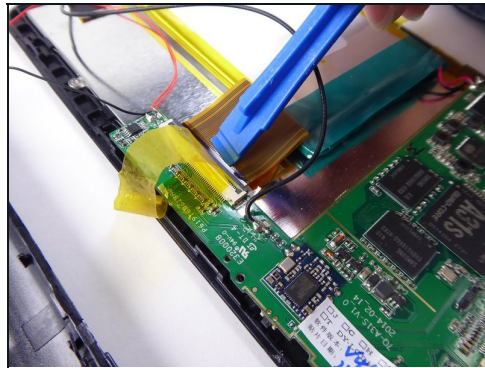
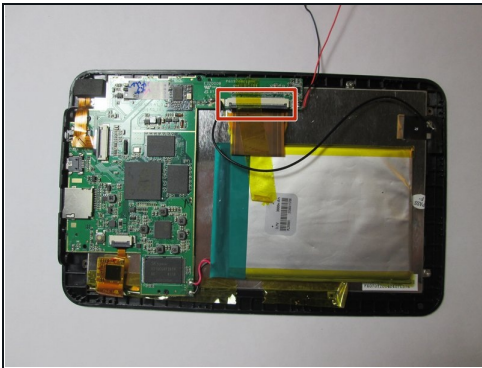
- Lift the tape holding down the battery.

Step 10



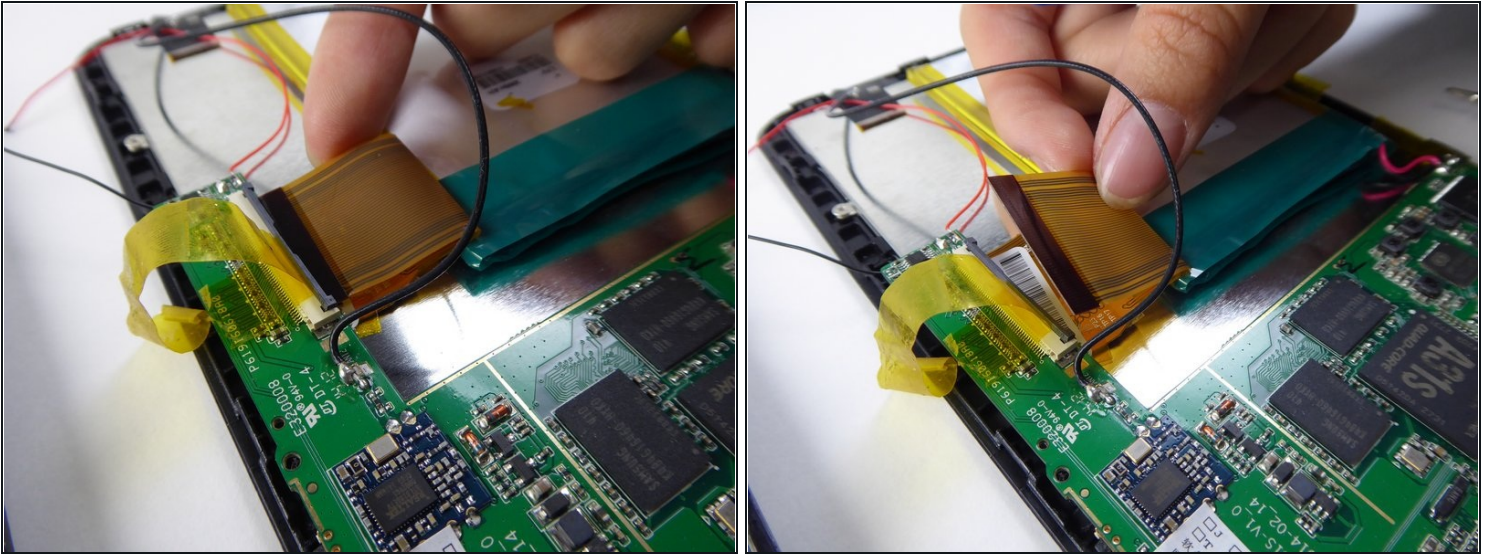
- Wedge a [plastic card](#) underneath the battery to remove it.

Step 11



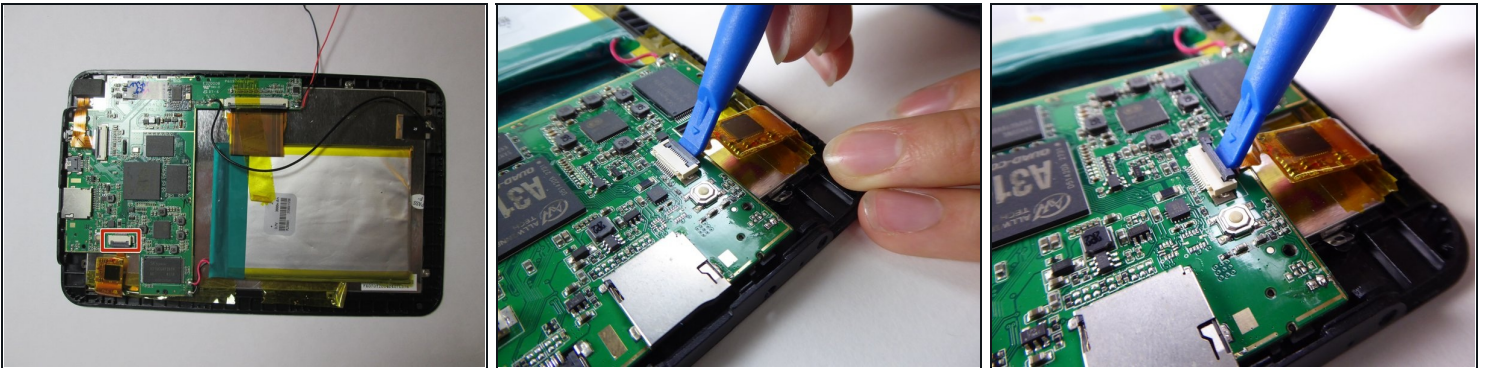
- Use a plastic opening tool to lift the black tab.

Step 12



- Carefully remove the ribbon cable from the black tab.

Step 13



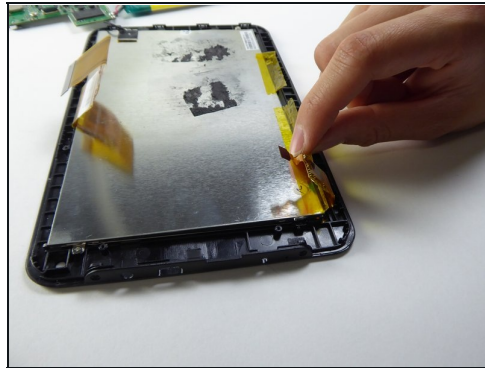
- Use a plastic opening tool to lift the black tab.

Step 14



- Lift to remove the battery and motherboard from the tablet.

Step 15



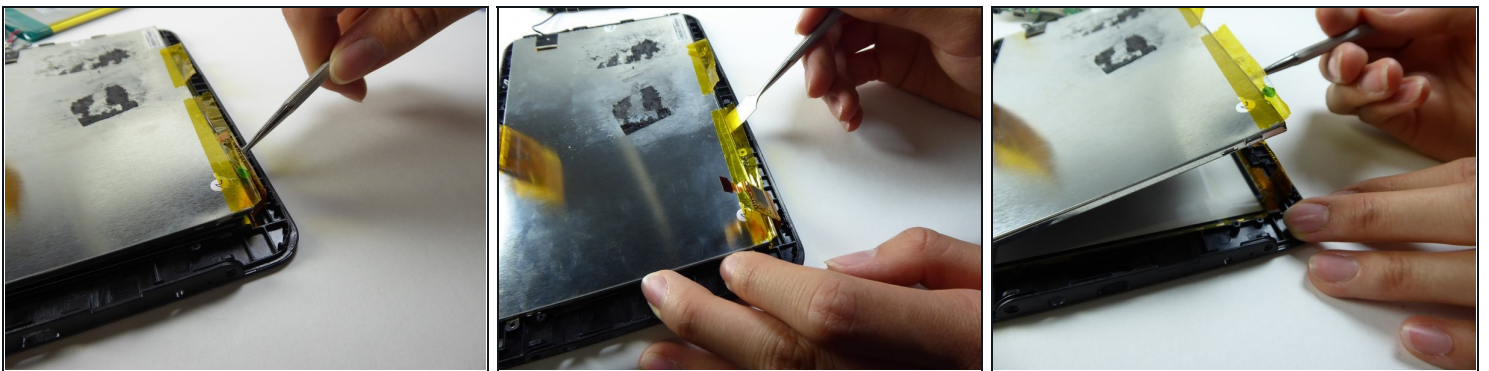
- Lift the tape on the sides.

Step 16



- Use a Phillips #000 screwdriver to remove the three 2.5mm screws.

Step 17



⚠ Be careful on this step - the screen is fragile and can break easily.

- Wedge a metal spudger underneath the LCD to remove it.
- Replace the LCD.

To reassemble your device, follow these instructions in reverse order.