



# Visual Land Prestige Elite 7Q Front Camera Replacement

Replace the front camera on your Visual Land Prestige Elite Q7.

Written By: Sabrina Scholten



---

# INTRODUCTION

Complete the following guide to replace your tablet's front camera.



## TOOLS:

- [iFixit Opening Tools](#) (1)
  - [Phillips #000 Screwdriver](#) (1)
-

## Step 1 — Front Camera



- At the bottom of the tablet, remove the two 3.6mm screws with a Phillips #000 screwdriver.

## Step 2



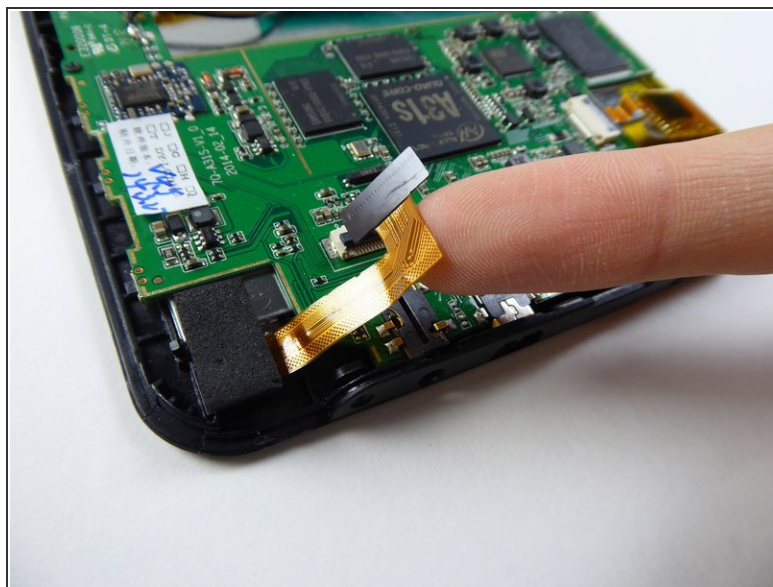
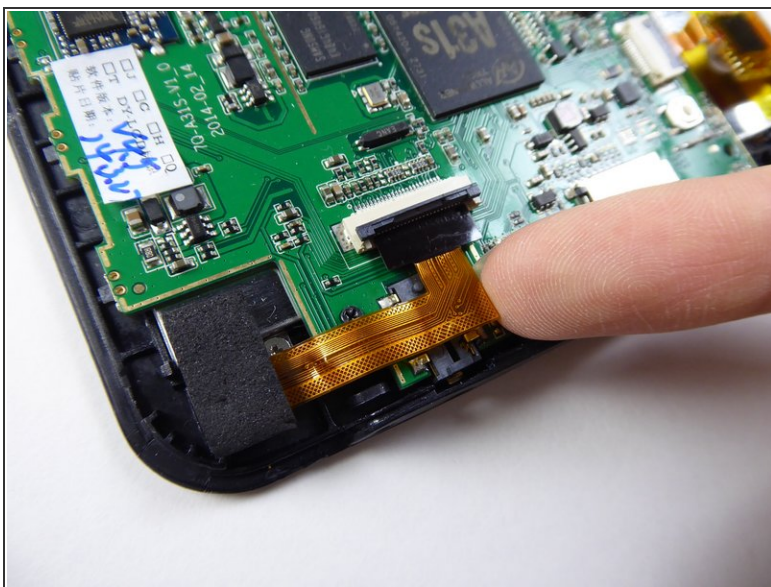
- Wedge a plastic opening tool into the edges of the tablet to pry it open.

## Step 3



- Use a plastic opening tool to lift the black tab holding down the ribbon cable.

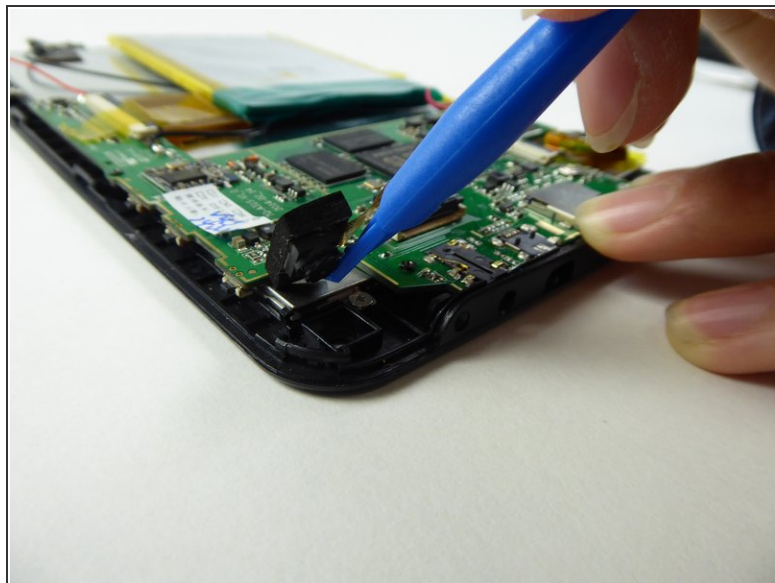
## Step 4



- Carefully use your finger to pull out the ribbon cable.

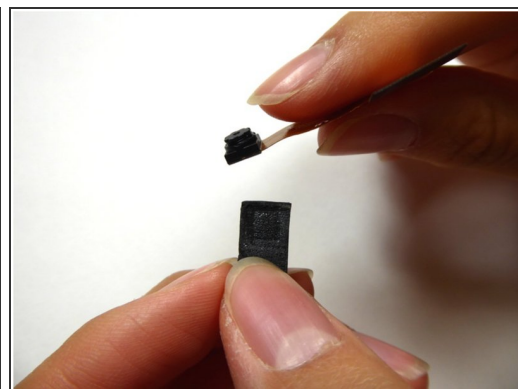
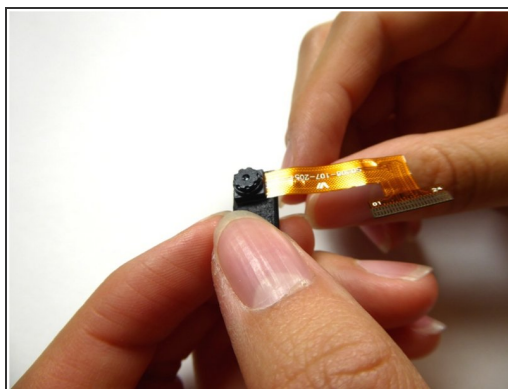
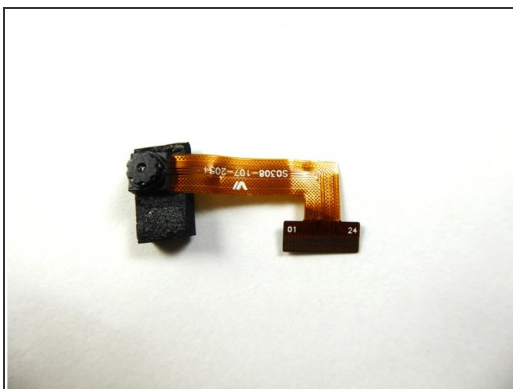


## Step 5



- Use a plastic opening tool to pull out the camera with the foam backing.

## Step 6



- Remove the camera from the foam backing.
- Replace the camera.

To reassemble your device, follow these instructions in reverse order.