



# Insignia NS-B4111 Antenna Replacement

Replace a broken antenna to get the radio to work again.

Written By: Kristin Yoshioka



---

## INTRODUCTION

This guide shows you how to remove the antenna from the boombox.



### TOOLS:

- [64 Bit Driver Kit](#) (1)
-

## Step 1 — Battery



- Unplug and remove the power cord. Turn the boombox upside down.
- Grip the sides of the case and use your thumbs to pop open the battery cover.

## Step 2



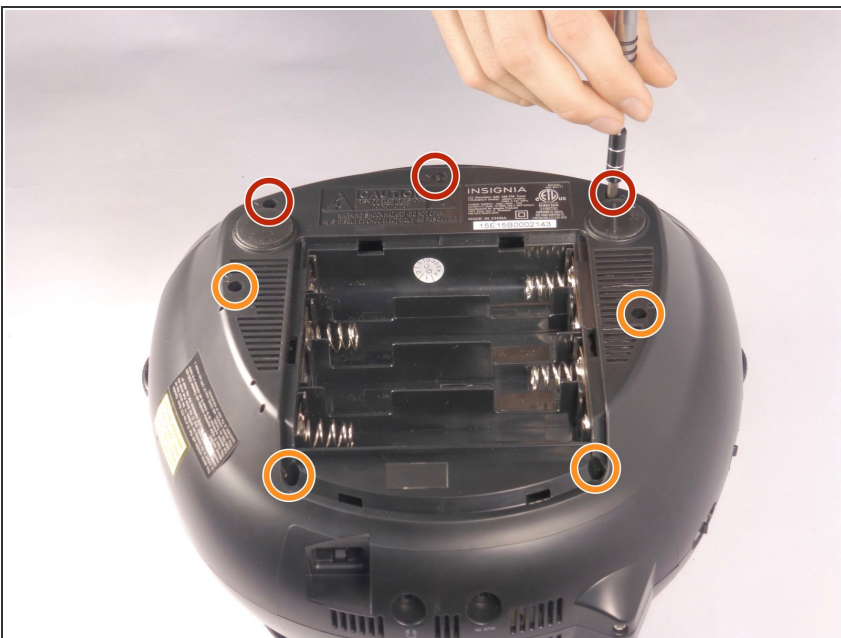
- Pry out the batteries with your fingers.

### Step 3 — External Antenna



- Set the boombox upright. Remove the 4mm screw and the two 6mm washers with the Phillips PH1 screwdriver.
- Remove the external antenna.

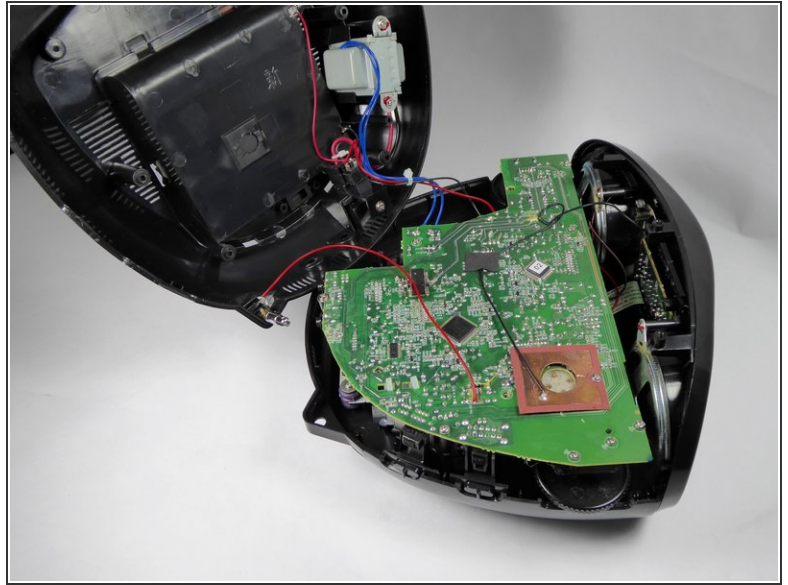
### Step 4 — Casing



- Turn the boombox upside down again. With the Phillips PH1 or the Flathead #3 screwdriver, remove the three 14mm black screws.
- Remove the four 18mm chrome screws with the Phillips PH1 screwdriver.

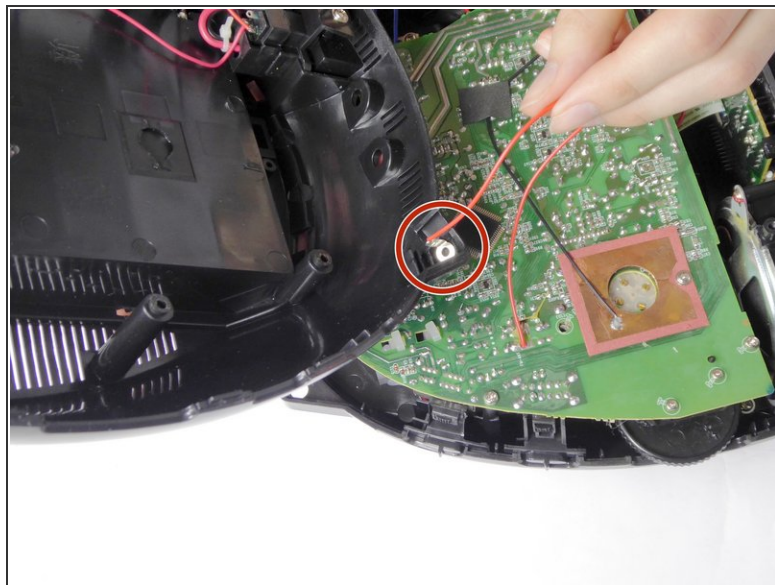
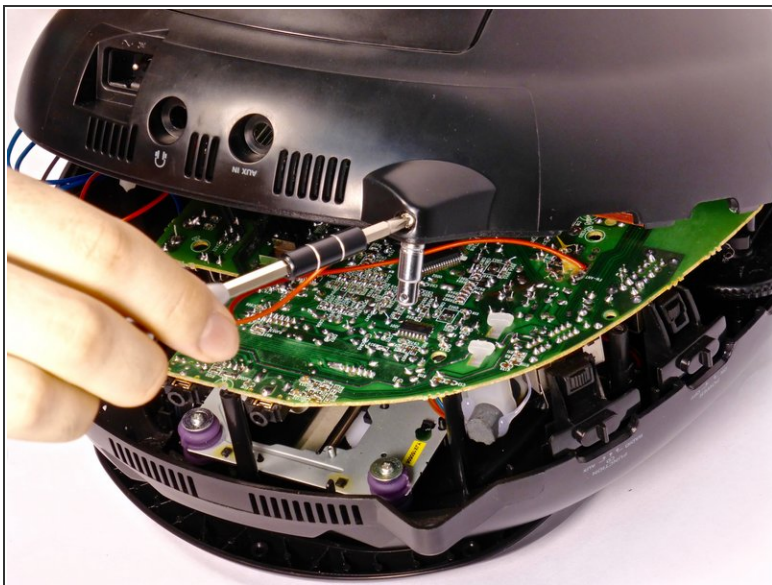


## Step 5



- Gently remove the bottom half of the casing from the top half of the casing.
- ⓘ The antenna base is connected to the motherboard by a red wire. This wire will prevent the two halves from separating completely.

## Step 6 — Antenna Base



- Remove the 10mm chrome screw from the antenna base with the Phillips PH1 screwdriver. Remove the antenna base from the casing.
- This red wire will now be loose and you can move it out of the antenna base slot.

To reassemble your device, follow these instructions in reverse order.