



# GM Key Fob Plastic Housing Replacement

This guide demonstrated how to replace the plastic housing for a GM LHJ011 or MYT3X6898B Key Fob, in order to recycle the electrical components.

Written By: Megan Hayden



## INTRODUCTION

This purpose of this guide is to provide clear instructions for replacing the plastic housing for a GM Key Fob. Replacing just the housing, instead of the entire Fob, can save the individual a significant amount of money in addition to reducing environmental and electrical waste.



### TOOLS:

- [A coin key ring or flathead screwdriver.](#) (1)

*Any one of these items can be used interchangeably during the repair process.*



### PARTS:

- [Doorman Keyless Remote Case 13618](#) (1)

## Step 1 — Key Fob Plastic Housing



- Pry apart the key ring to remove it from the old housing.

## Step 2



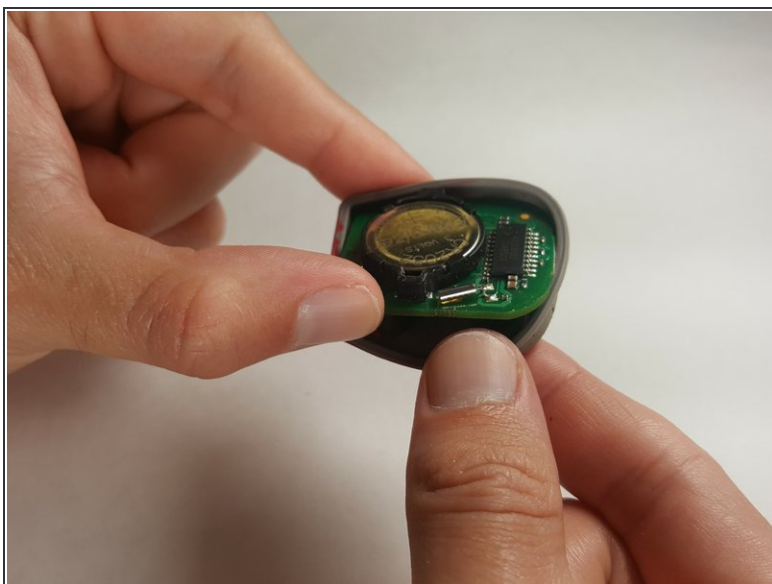
- Once you have removed the key ring, use it to open the housing by wedging it into the groove, as pictured.

### Step 3



- Remove the electrical board and rubber key pad from the old housing.

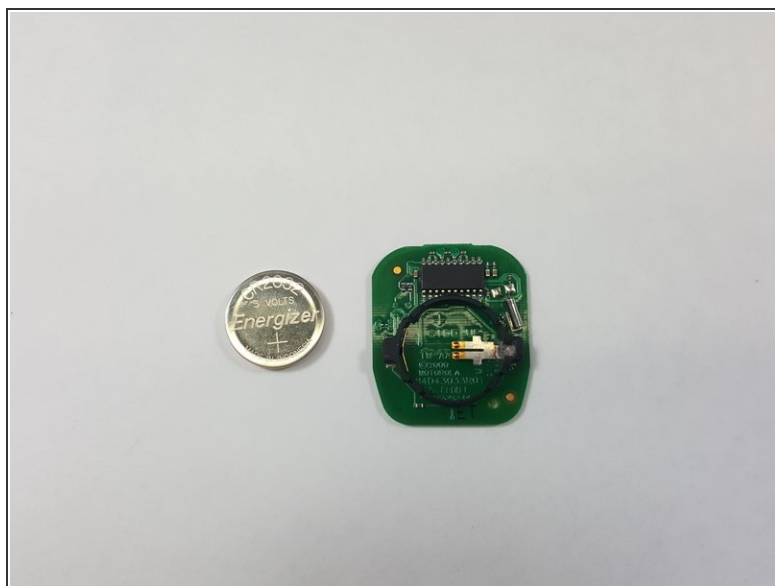
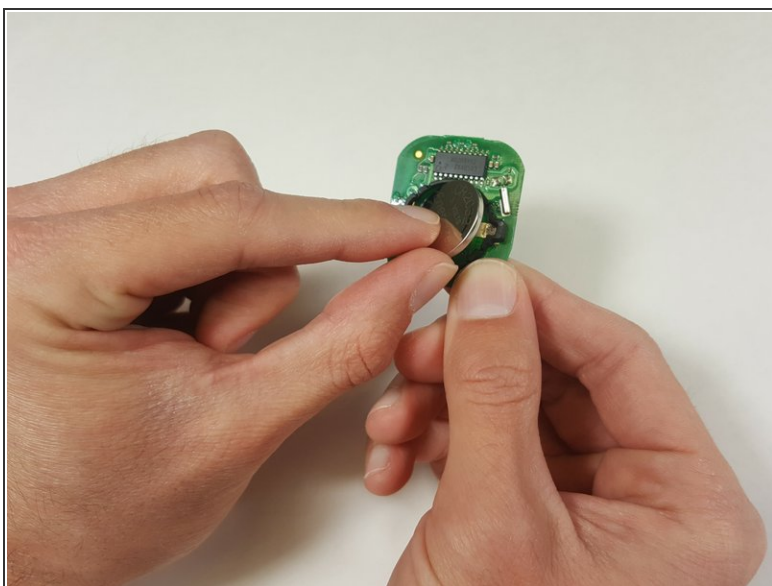
### Step 4



- Remove the electrical board from the rubber key pad.



## Step 5



- If necessary, remove the battery from the electrical board and replace it.

## Step 6



- After Opening the new Key Fob package, select the correct housing as more than one model is included.

To reassemble your device, simply follow these disassembly instructions in reverse order.