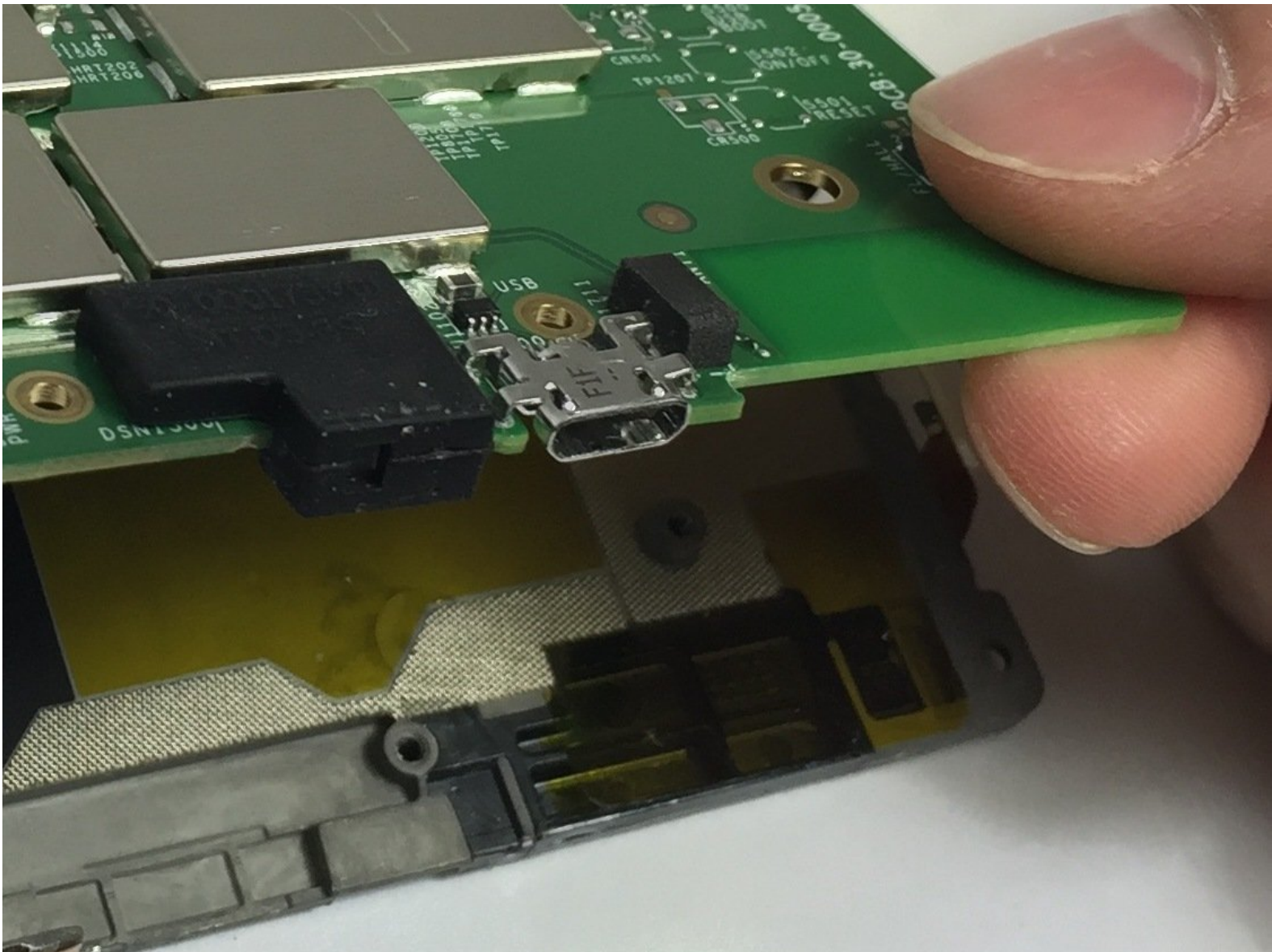




Kindle Paperwhite 2nd Generation Charging Port Replacement

The Paperwhite's charging port is integrated...

Written By: Tyler Davis



INTRODUCTION

The Paperwhite's charging port is integrated into the motherboard, and can only be replaced by either de-soldering the old port and carefully soldering on a new one, or by replacing the entire board.



TOOLS:

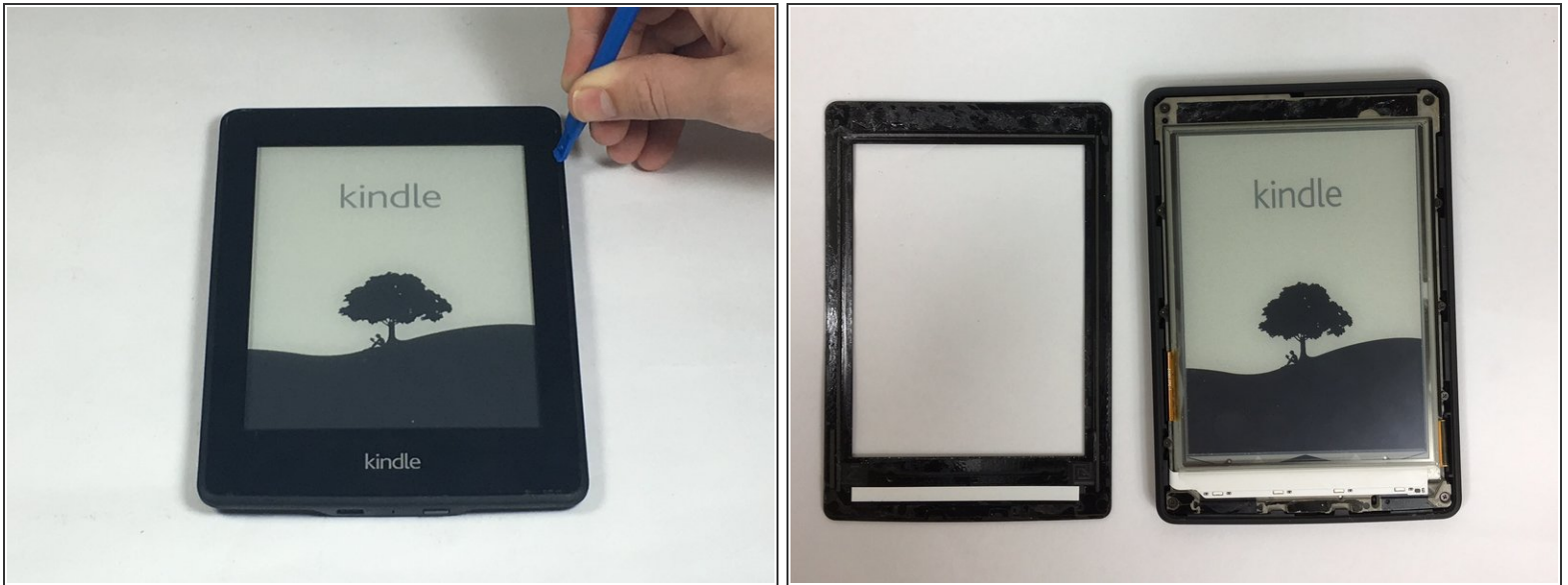
- [iFixit Opening Tool](#) (1)
- [Phillips #000 Screwdriver](#) (1)
- [Soldering Workstation](#) (1)
- [iFixit iOpener](#) (1)



PARTS:

- [Kindle Paperwhite \(2nd Gen\) Replacement Battery](#) (1)

Step 1 — Battery




- Insert plastic opening tool into the corners of the Paperwhite and slide around the edge perimeter to remove bezel.
- ⓘ Be sure to begin prying along the outer edges , these are the optimal points for removing the bezel.
- ⚠ Be careful and do not slide prying tool deeper than 3-4 mm under the side bezel or you could peel off screen protector film.

Step 2



- Using a Screw Driver, Remove the eleven 3.2 mm Phillips 000 screws from corners of the mid-frame and from behind the black strip as shown.

 Do not forget the screw in the middle of the black adhesive strip.

Step 3



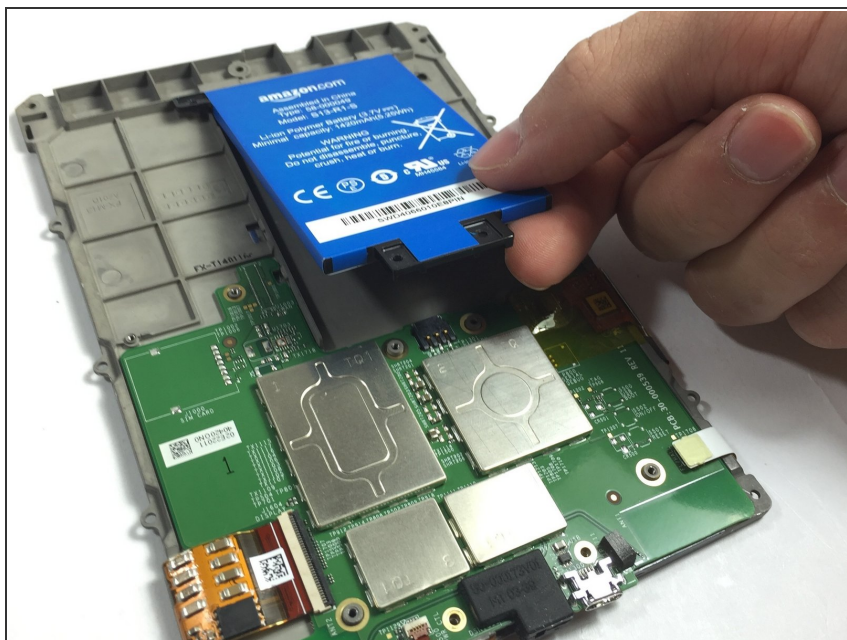
- Carefully remove the mid-frame from the back cover.

Step 4



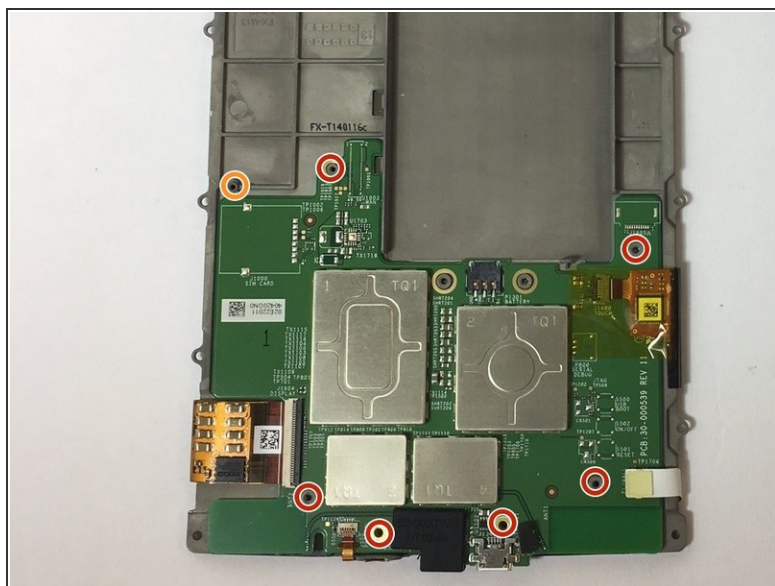
- Use a screwdriver to remove the three 3.0 mm Phillips 000 screws that are holding the battery in place as shown.

Step 5



- Carefully lift the battery and remove it from the device.

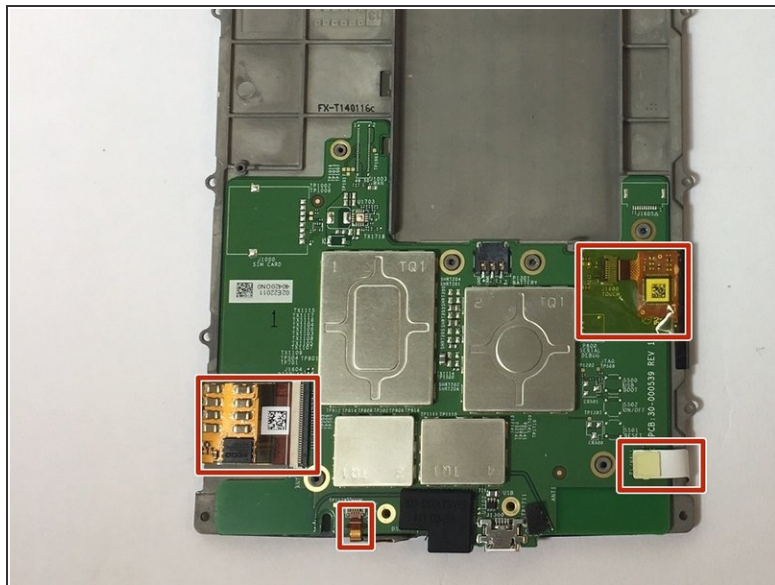
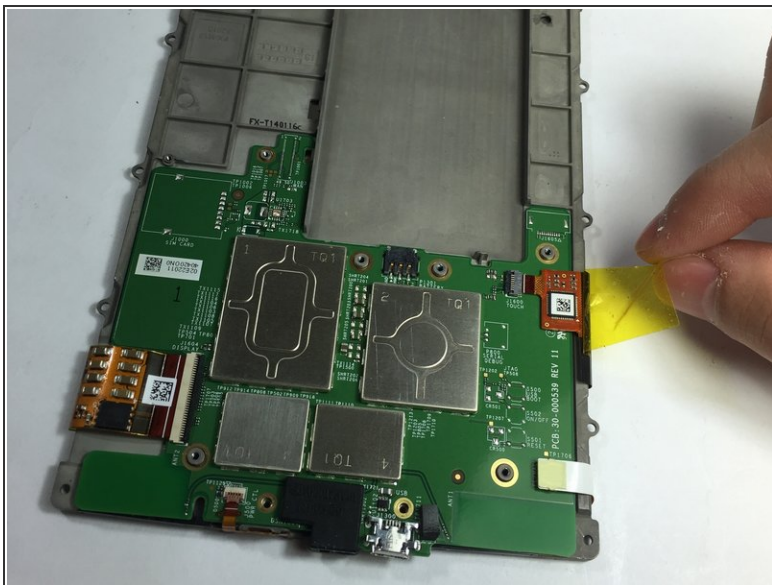
Step 6 — Motherboard



- Use a screwdriver to remove the seven 3.0 mm Phillips 000 screws that are holding the motherboard in place as shown.

⚠ Don't lose the washer that is highlighted with an orange marker as shown. It is a necessary component to protect the screw.

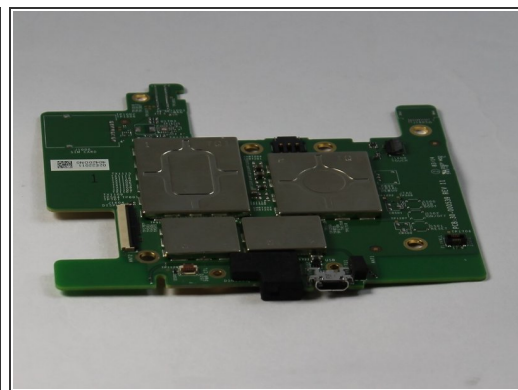
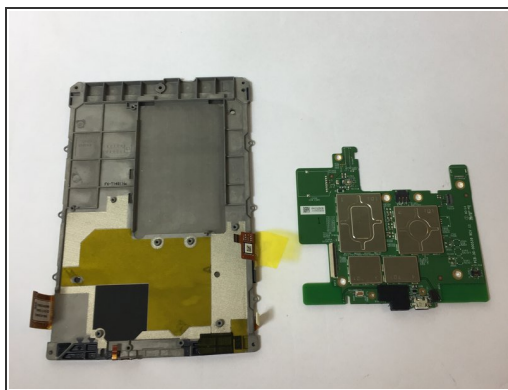
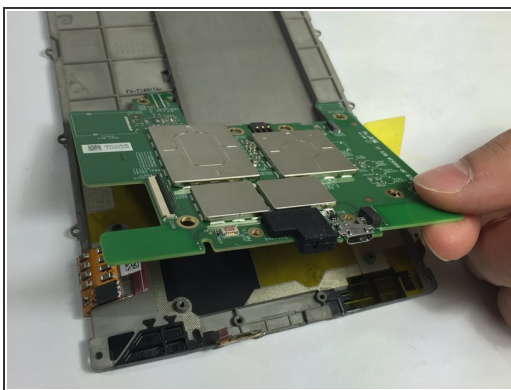
Step 7



- Gently disconnect the zif connectors.

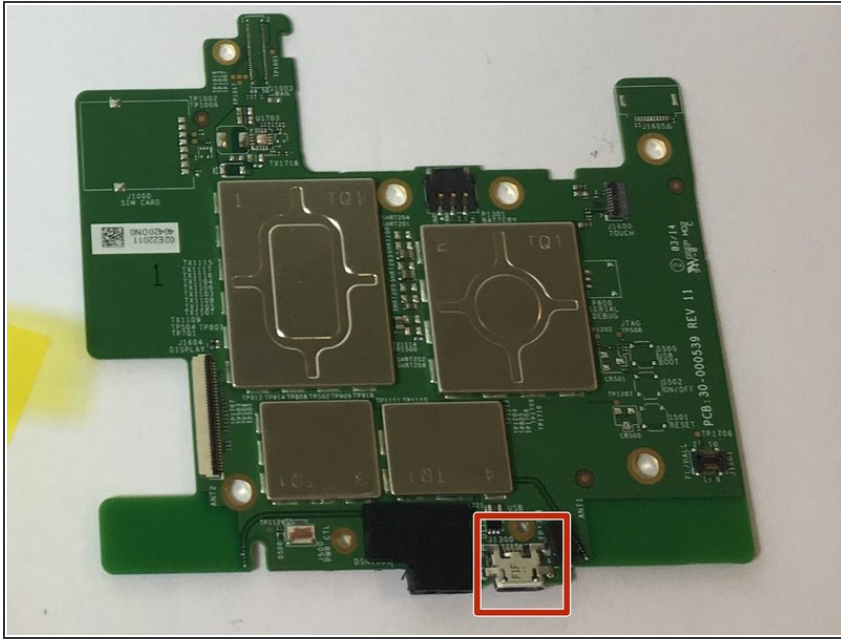
⚠ Some of these connectors are very thin and fragile, handle with care!

Step 8



- Gently remove the motherboard.

Step 9 — Charging Port



- ⓘ The charging port is integrated in to the device motherboard.
- From here, to fix a faulty port, either replace the entire motherboard, or carefully desolder the old port and solder a new one on in its place.
- ⓘ Check out the [soldering guide](#) for help.

To reassemble your device, follow these instructions in reverse order.