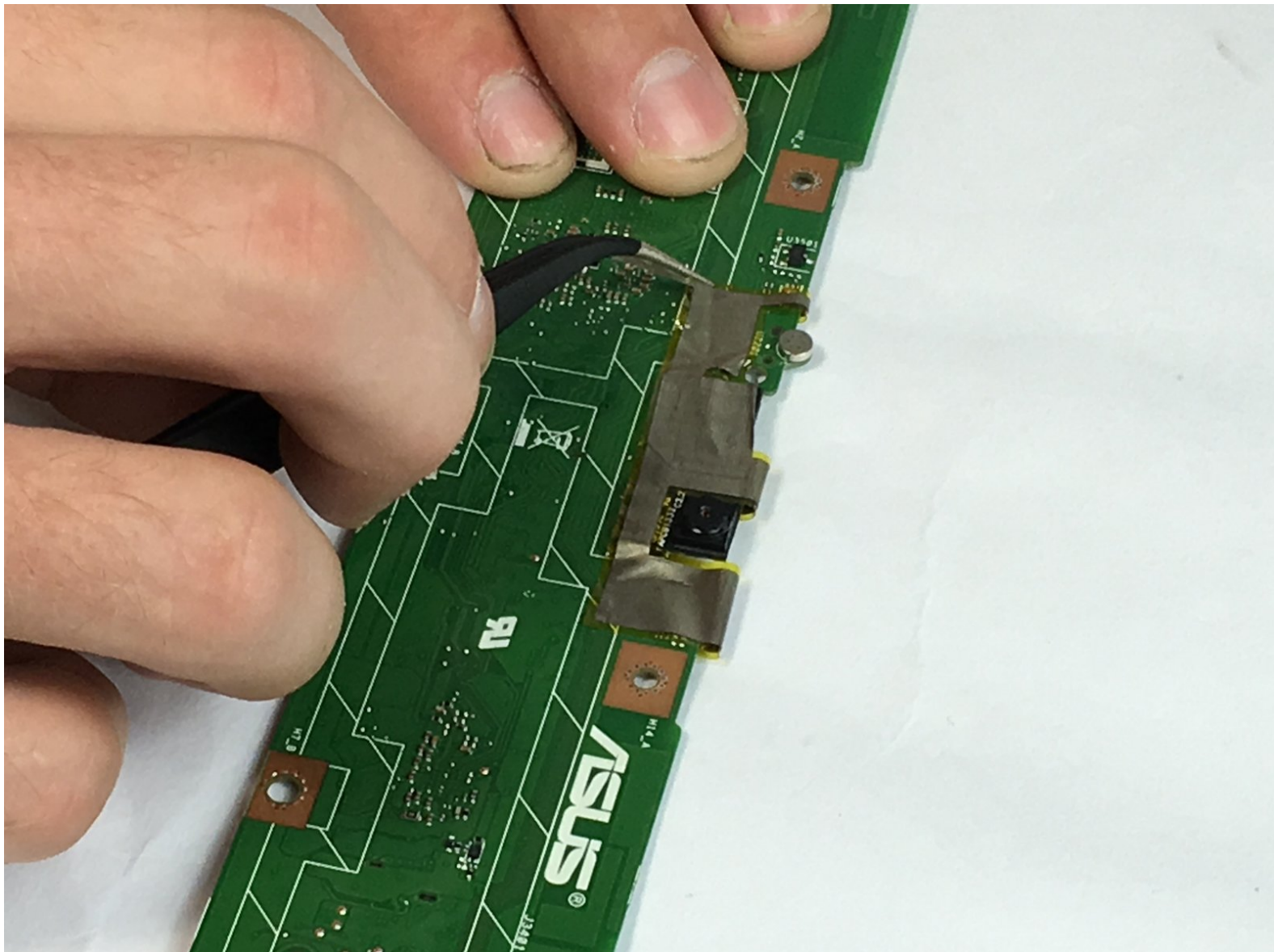




Asus MeMo Pad 10 ME102A Front and Rear Camera Replacement

This guide will demonstrate front and rear camera replacement for the Asus MeMo Pad ME102A.

Written By: James



INTRODUCTION

This replacement guide shows how to remove front and rear cameras for the Asus MeMo Pad ME102A.

TOOLS:

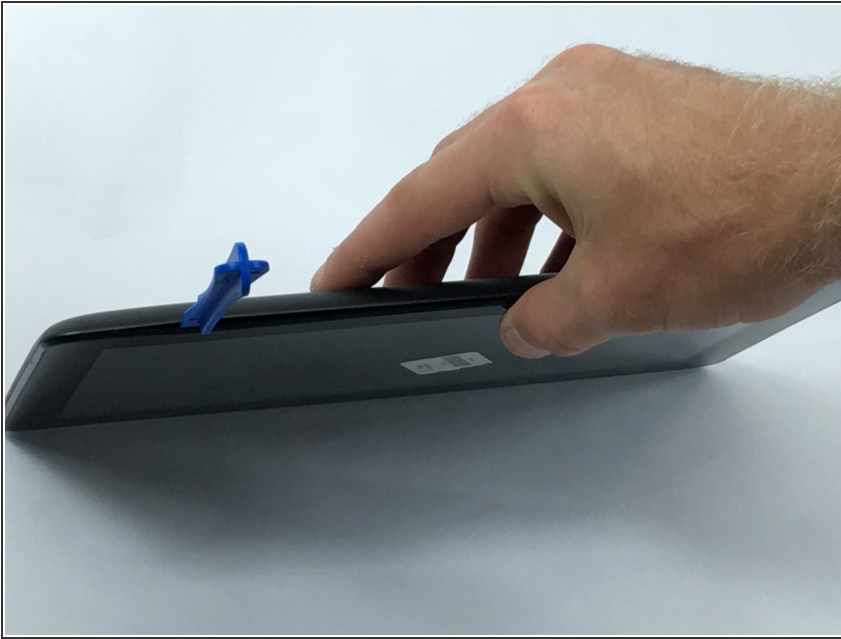
- [iFixit Opening Tools](#) (1)
 - [Phillips #00 Screwdriver](#) (1)
 - [Tweezers](#) (1)
 - [Spudger](#) (1)
-

Step 1 — Back Panel



- Insert the blue plastic opening tool into the seam between the back panel and the chassis.
- ⓘ When removing the back panel, remember to keep the device face down on a flat surface in order to prevent dropping the device or anything inside of the device.

Step 2



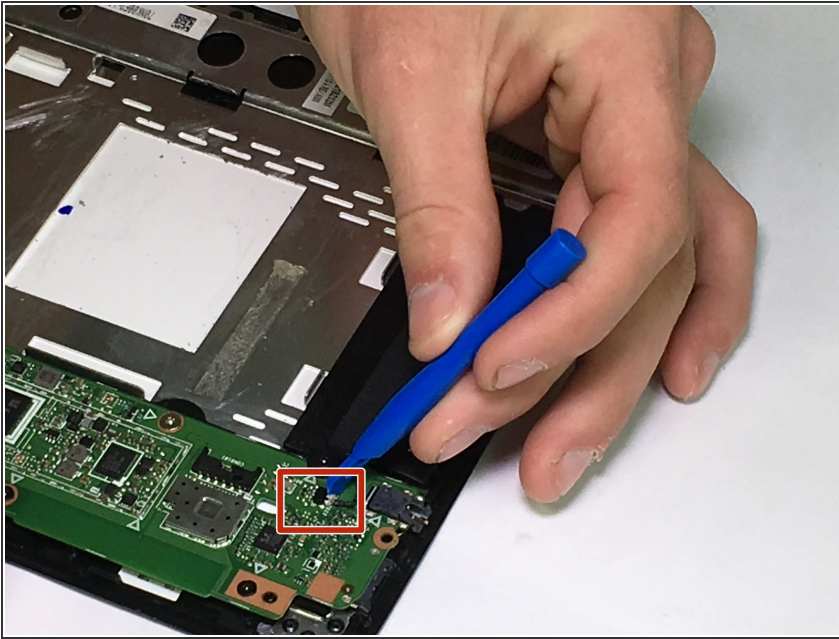
- Slide the plastic opener around the tablet. There will be spots of resistance. These should gently pop open as the tool slides through the seam.

Step 3



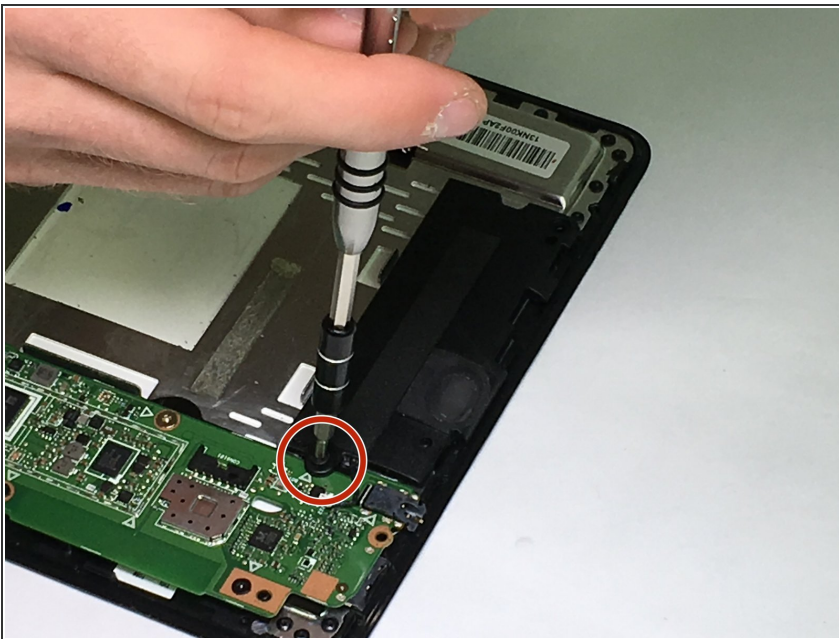
- After all of the clips have been opened, the back panel should be free to remove by hand

Step 4 — Speakers



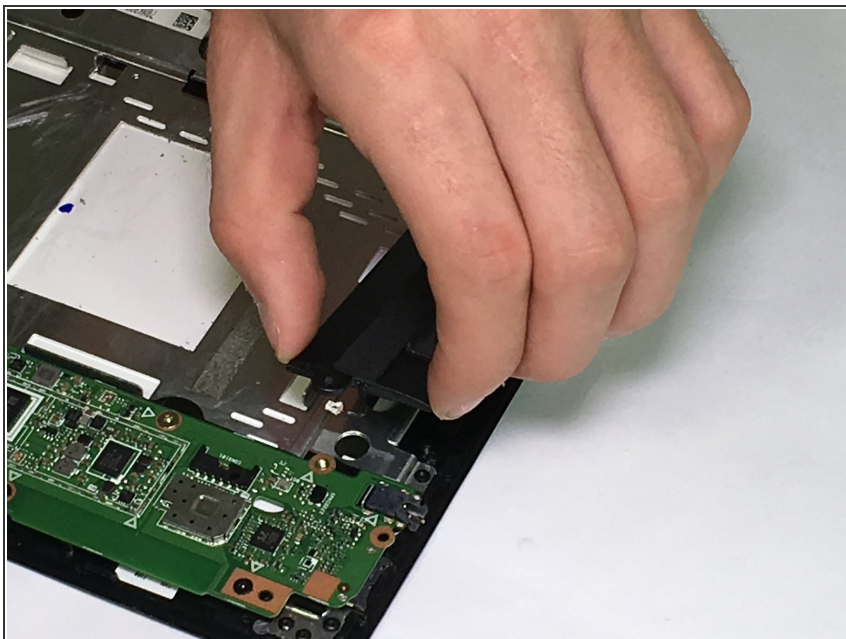
- The right-hand speaker is labeled ME102A-R and is located by the battery plug. This is the first speaker removed in this guide, however if the left-hand speaker is the only one you need to replace please skip down to the left-hand speaker section.
- Unplug the speaker cable by gently pushing it parallel to the motherboard with the flat side of the blue plastic opening tool.

Step 5



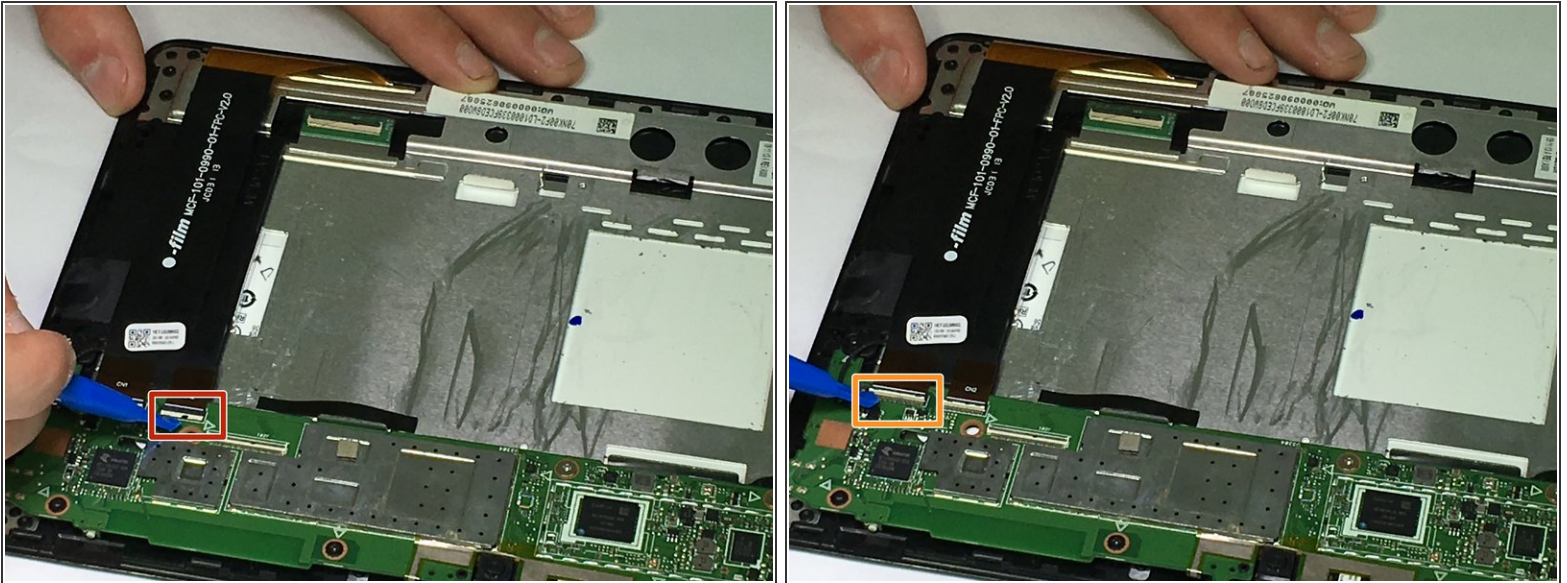
- Unscrew the M2x4mm screw with the PH00 screwdriver attachment.

Step 6



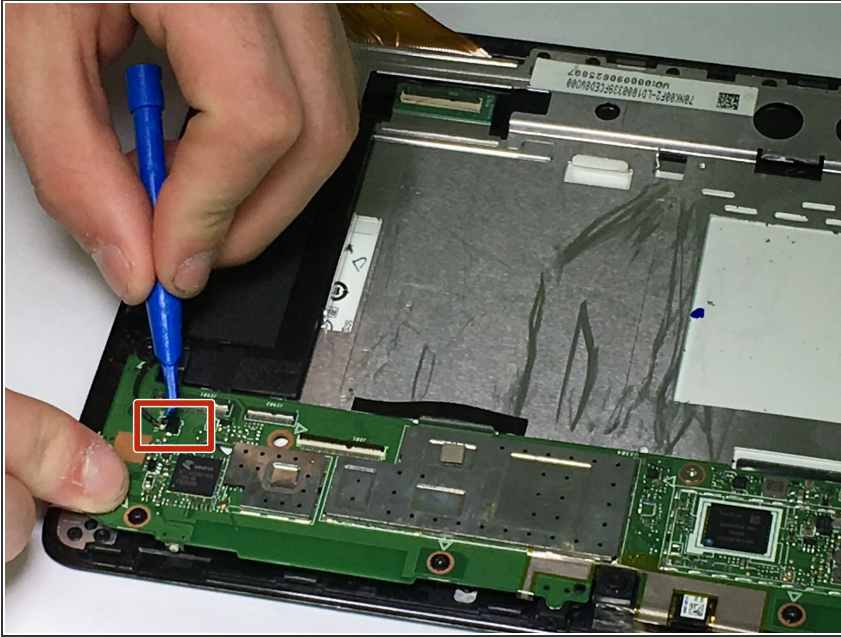
- Lift the speaker up by the end opposing the steel latch and slide it out from under the steel latch. The speaker has now been removed.

Step 7



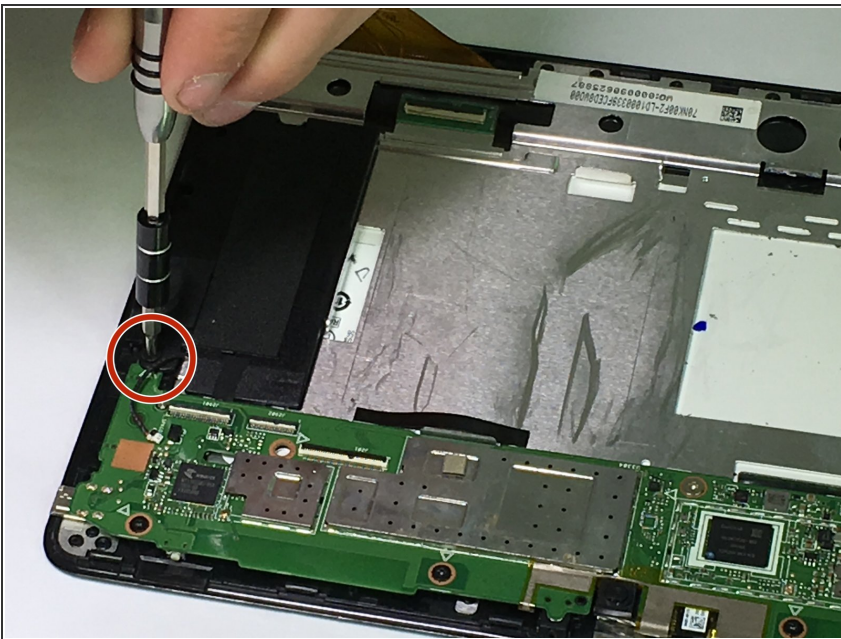
- The left-hand speaker is designated by the lettering ME102A-L and is located by the silver and blue ribbon cable running across the top of the battery.
- Remove the Ribbon cable labeled CN2 by gently prying up the white latch of the black and white plugs by using the small blue plastic opening tool.
- Remove the Ribbon cable labeled CN1 by gently prying up the white latch of the black and white plugs by using the small blue plastic opening tool.

Step 8



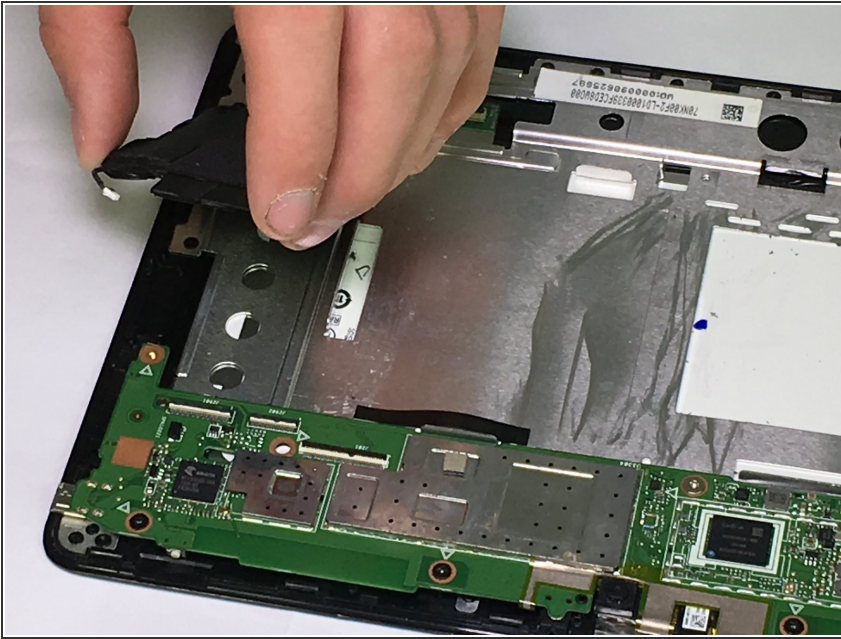
- Unplug the speaker cable by gently pushing it parallel to the motherboard with the flat side of the blue plastic opening tool.

Step 9



- Unscrew the M2x4mm screw with the PH00 screwdriver attachment.

Step 10



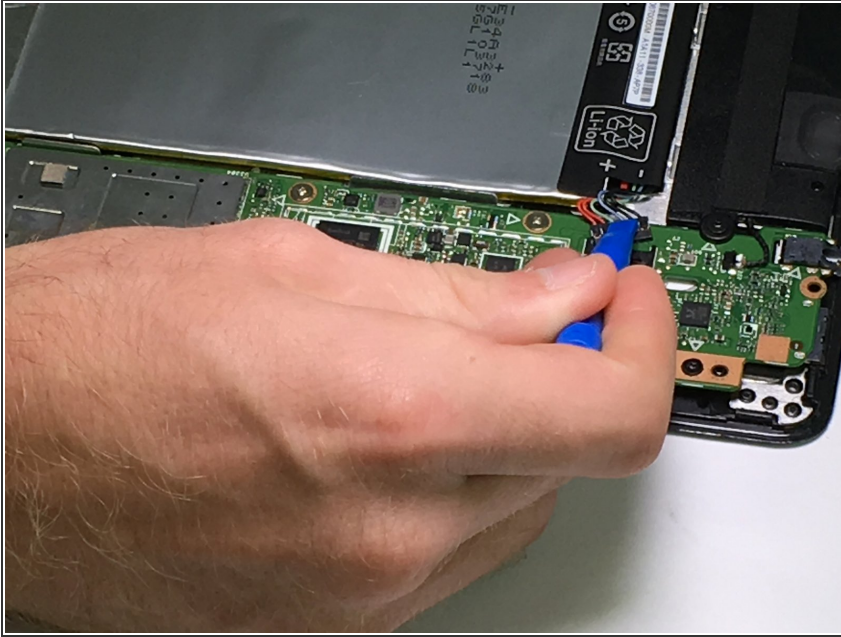
- Lift the speaker up by the end opposing the steel latch and slide it out from under the steel latch. The speaker has now been removed.

Step 11 — Motherboard



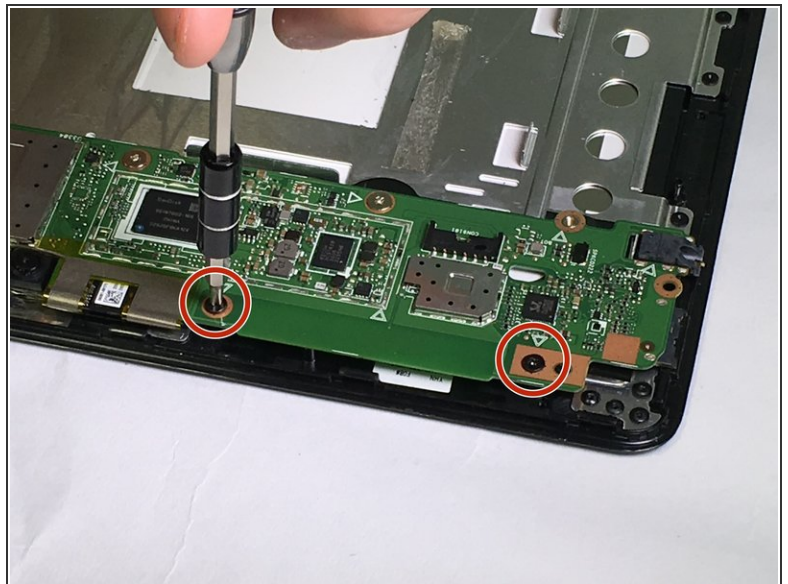
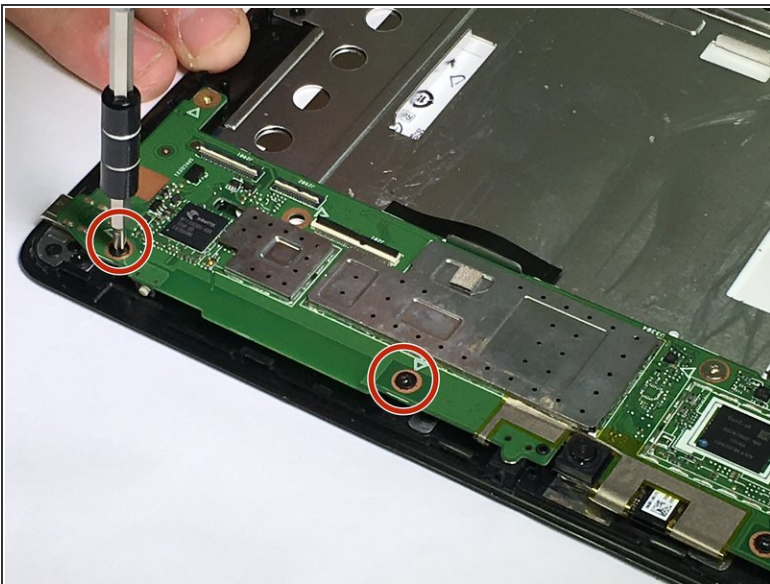
- Use the blue plastic opening tool to lift open the black latch connecting the blue ribbon cable to the motherboard.

Step 12



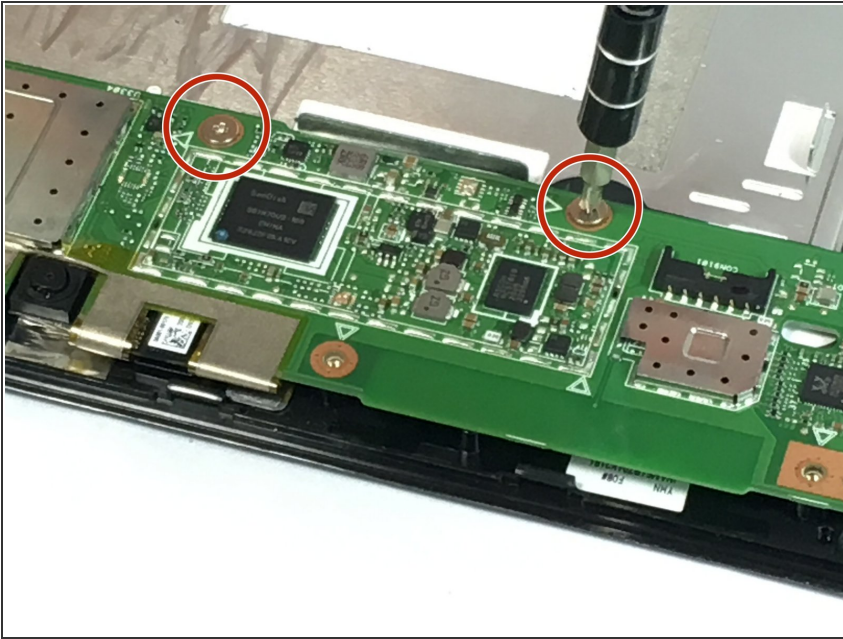
- Using the blue plastic opening tool unplug the battery plug by gently pushing the plug out parallel to the motherboard.

Step 13



- Using the PH00 screwdriver, remove the 4 black M2x4mm screws along the bottom of the motherboard.

Step 14



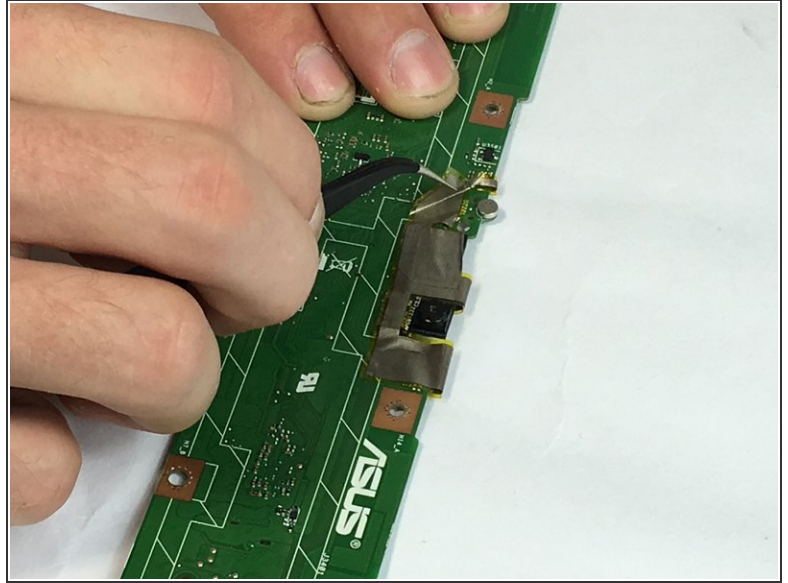
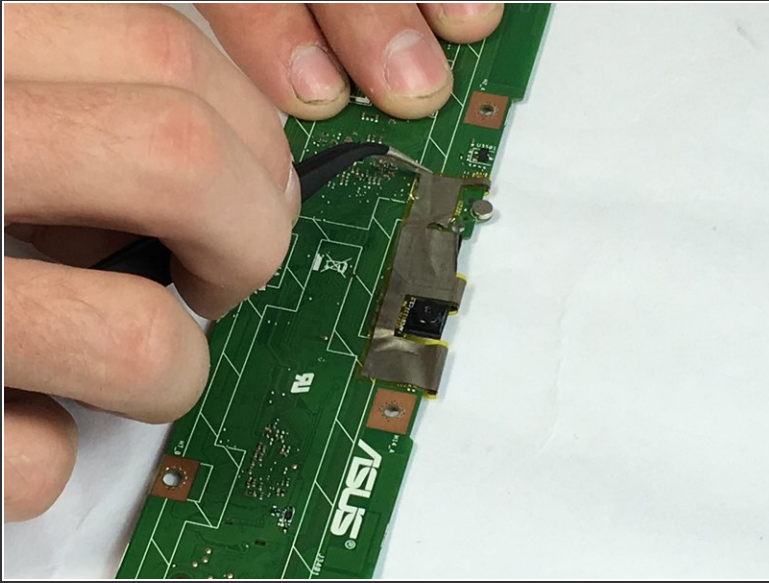
- Using the PH00 screwdriver, remove the 2 silver M2x2mm screws along the top of the motherboard.

Step 15



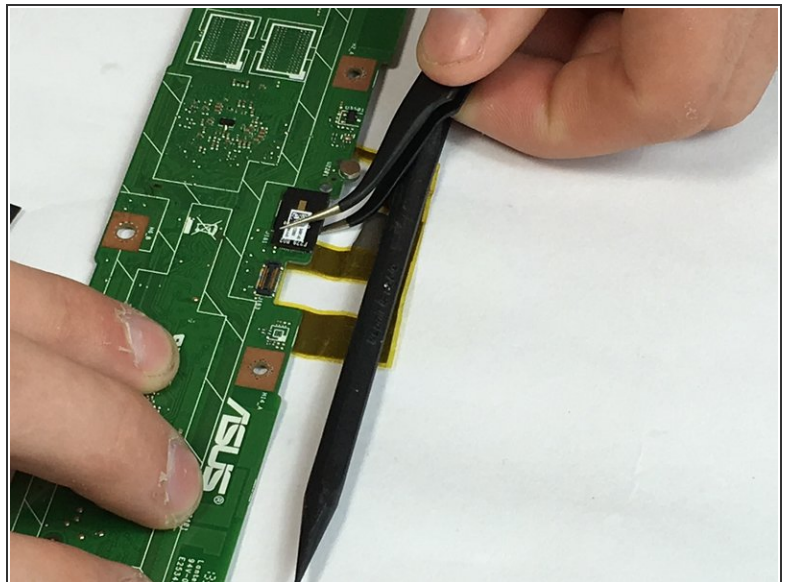
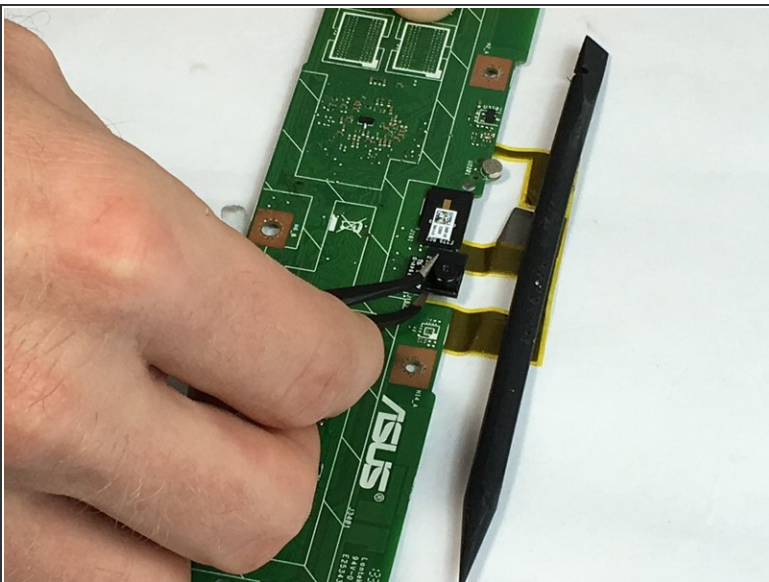
- Lift the motherboard gently from both sides.

Step 16 — Front and Rear Camera



- Use the tweezers to pull up the electrical tape around the front and rear cameras (ASUS lettering facing up). This can take a while as the tape is very sticky. Be careful not to damage the motherboard as it is fragile.

Step 17



- Carefully pull up on each camera to unplug them. They should move free with minimal force.
- ❗ The nylon spudger is holding the tape down.

To reassemble your device, follow these instructions in reverse order.