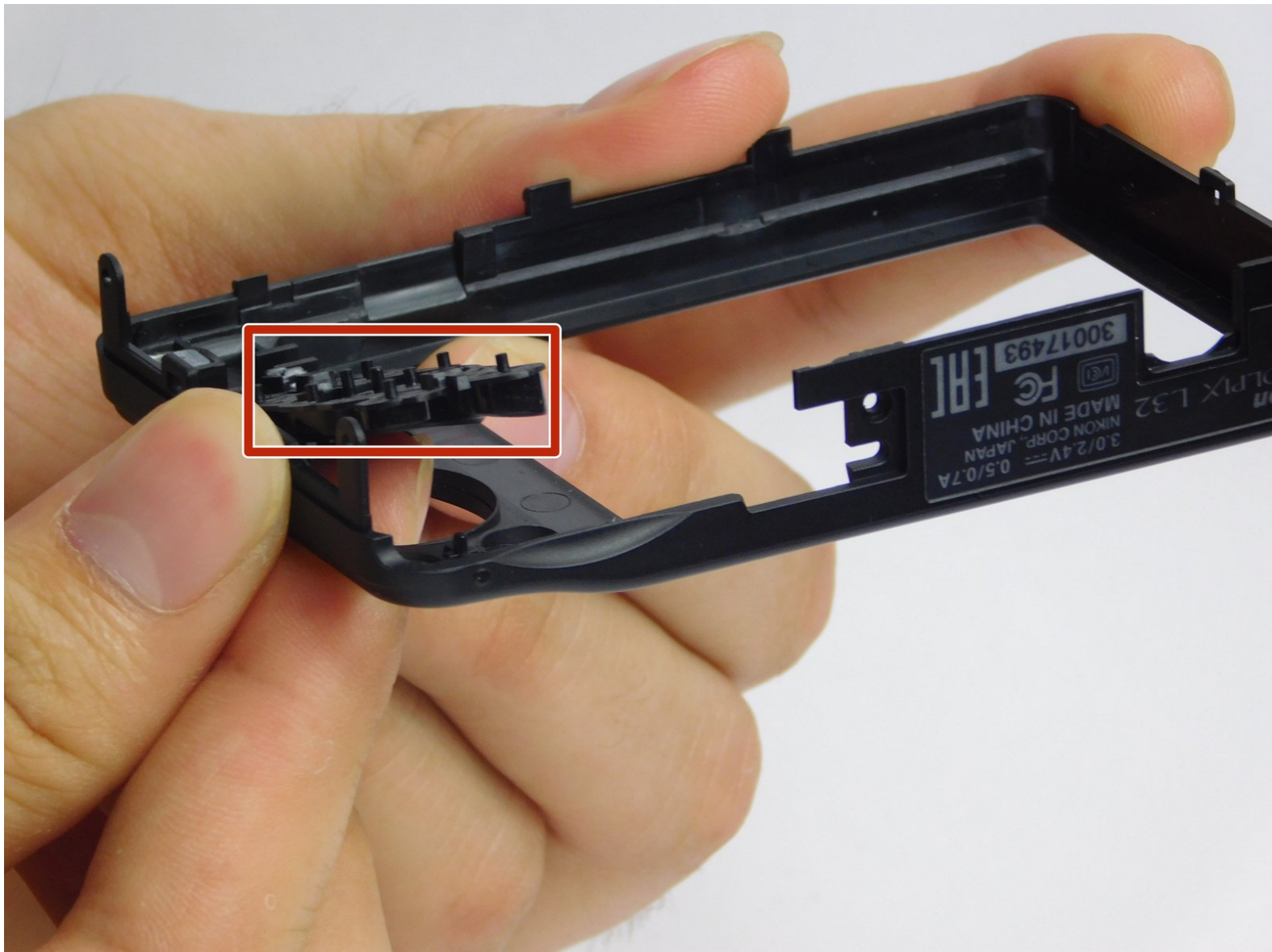




Nikon Coolpix L32 Selection buttons Replacement

If your Nikon Coolpix L32 selection buttons on the camera are not working, you should consider replacing them.

Written By: Sherika Jacobs



INTRODUCTION

This guide will explain how to replace the selection buttons on the camera. There are no hazards associated with this replacement. Let's get started!

TOOLS:

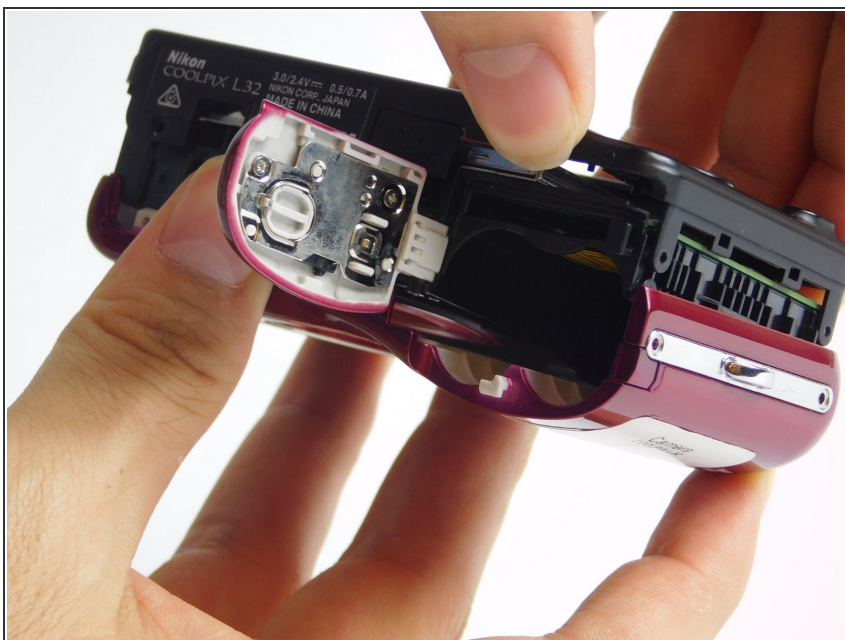
- [Phillips #00 Screwdriver](#) (1)
-

Step 1 — Front Panel



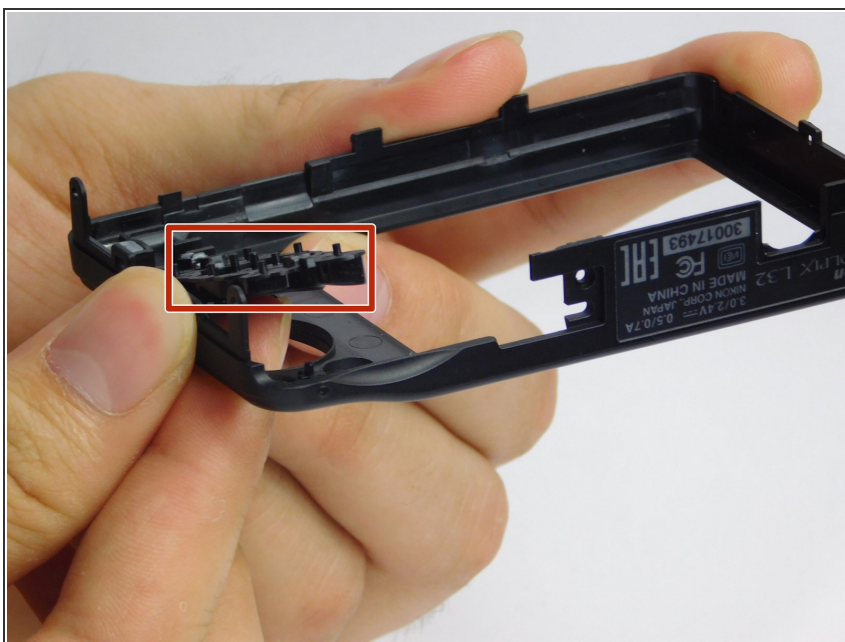
- Remove the six(3.93mm screws) on the outside of the camera using a Phillips 00 screwdriver.

Step 2



- Open the battery compartment door and pull the black back face apart from the front red face.

Step 3 — Selection buttons



- Secure the black back case in hand and remove selection buttons from the case by pushing them upward and replace them with a new set of buttons.

To reassemble your device, follow these instructions in reverse order.