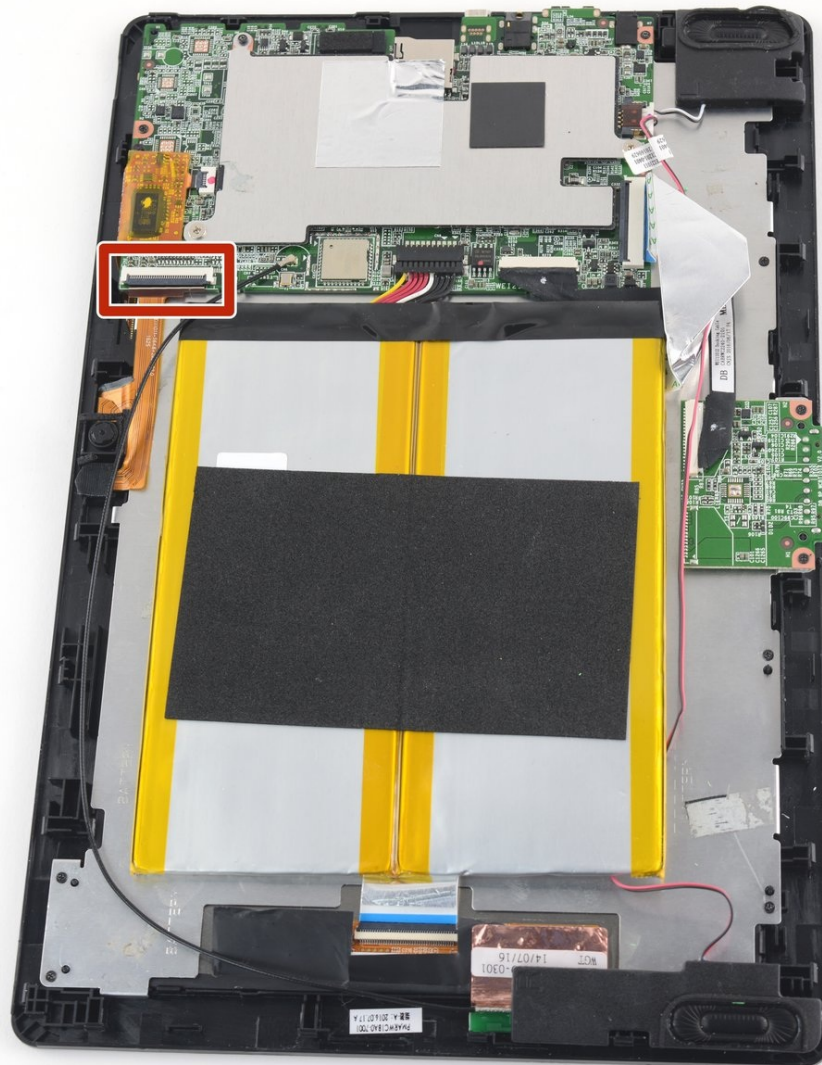




One Education Infinity:One Camera Assembly Replacement

In the One Education Infinity:One laptop, the...

Written By: Taylor Bratsch



INTRODUCTION

In the One Education Infinity:One laptop, the front and rear facing cameras are one component. If you are experiencing performance issues with either camera this guide will help you replace them.

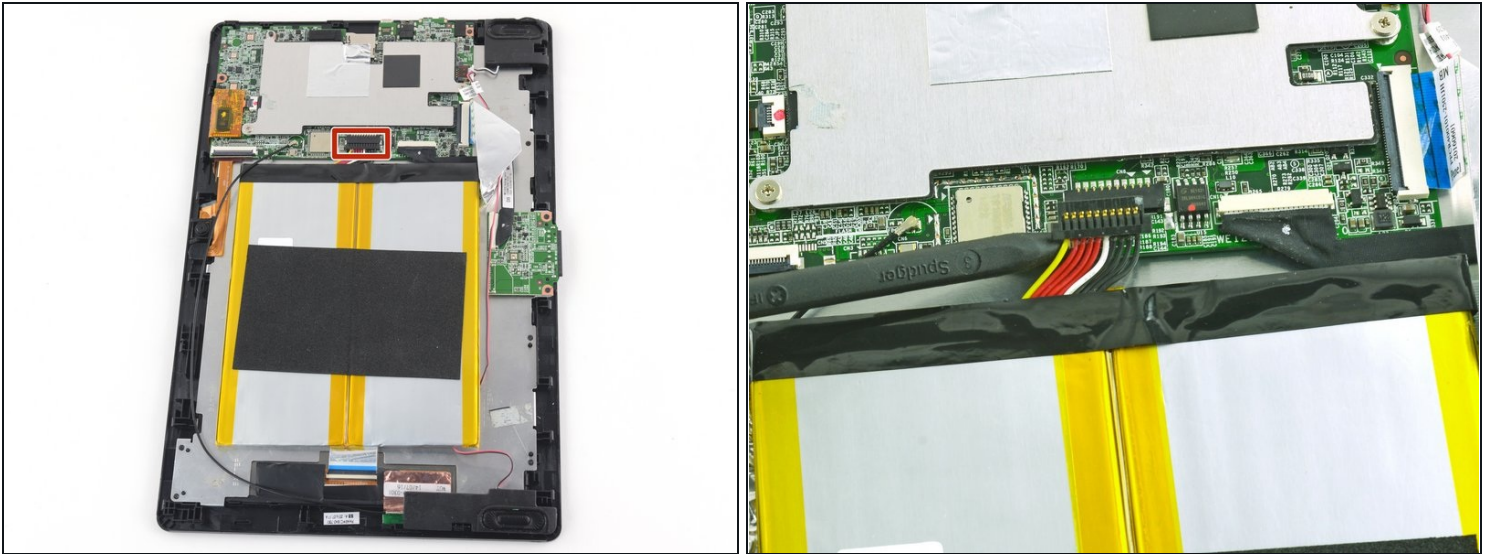
TOOLS:

Jimmy (1)

Heavy-Duty Spudger (1)

Tweezers (1)

Step 1 — Battery



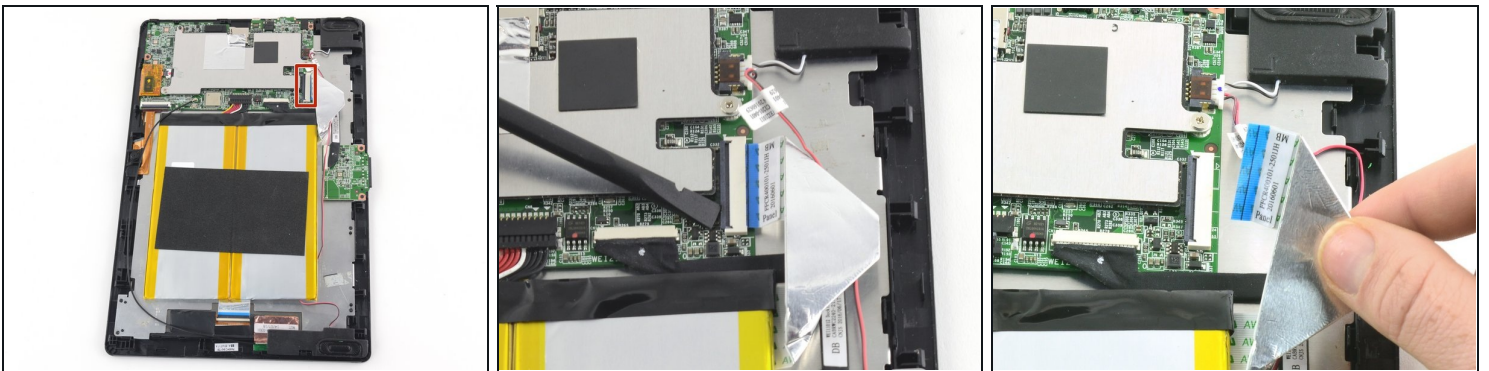
- Use a spudger to disconnect the black bundled cable connector from the motherboard.

Step 2



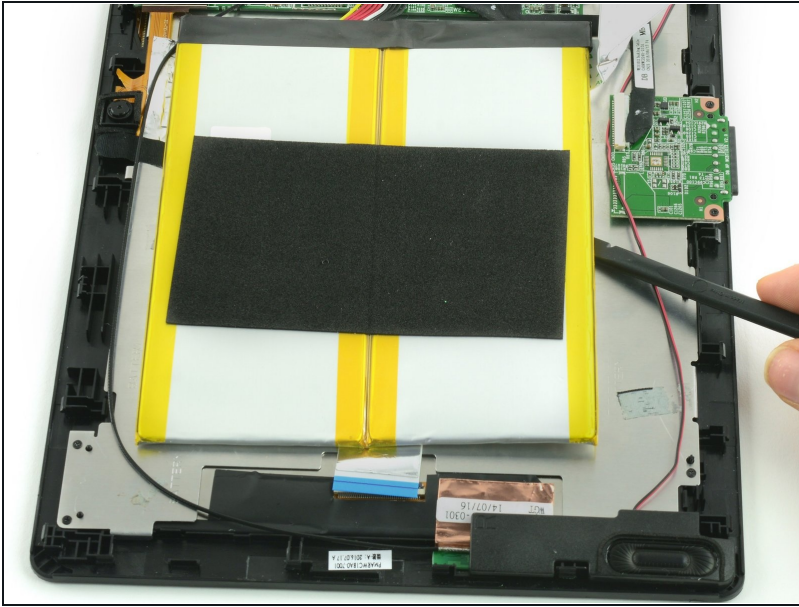
- Use a spudger to lift the black tab on top of the ZIF connector.
- Slide the ribbon cable out of the connector.

Step 3



- Use a spudger to flip up the black retaining flap on the ZIF connector.
 - Pull the folded ribbon cable straight out of the connector.
- ⓘ This ribbon cable must be disconnected before removing the battery because it is attached to the battery with adhesive.

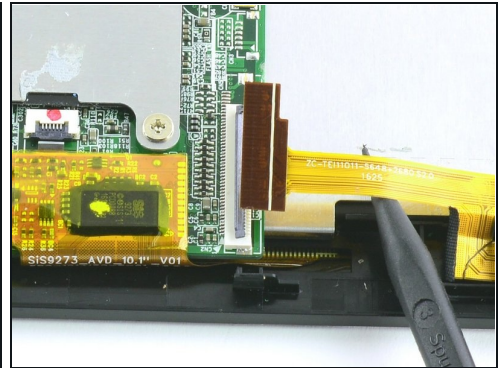
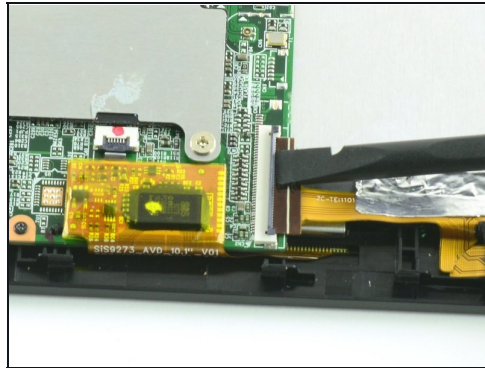
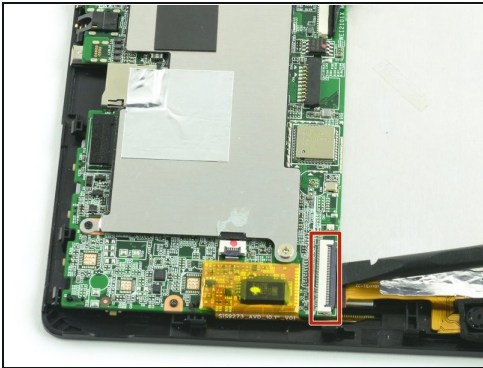
Step 4



- Use a spudger to pry the battery away from the device.

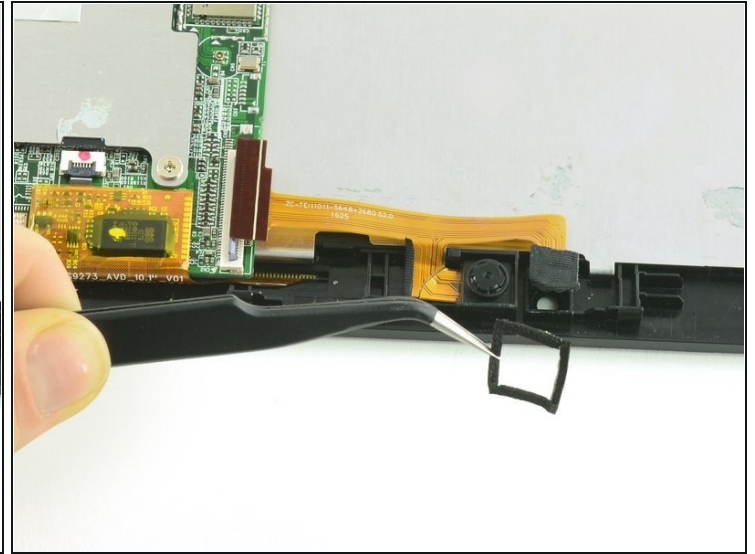
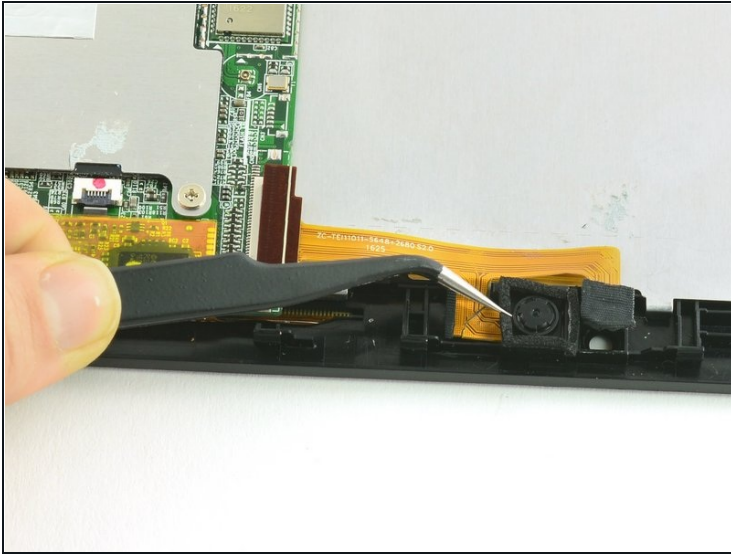
⚠ Always use ESD safe tools when working with delicate electrical components.

Step 5 — Camera Assembly



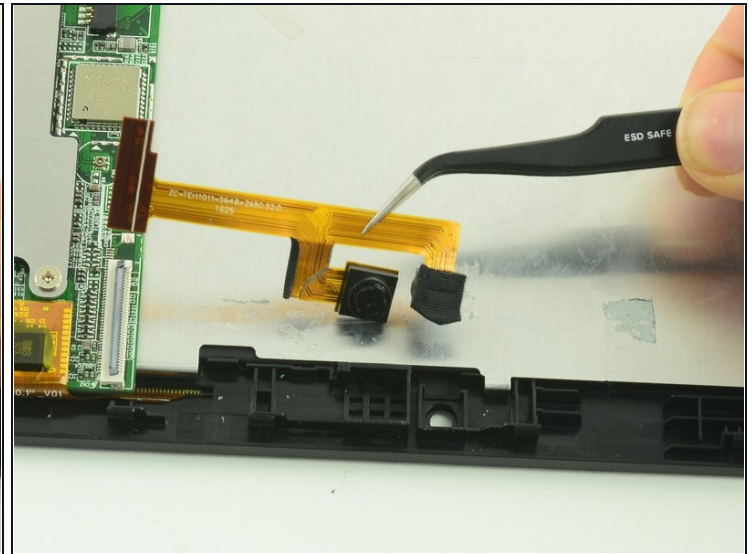
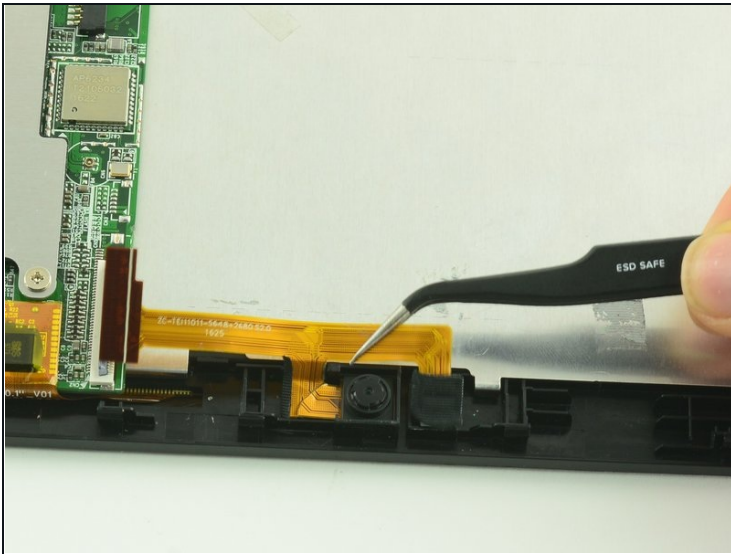
- Use a spudger to flip up the black flap on the camera's ZIF connector.
- Pull the ribbon cable straight out of the connector.

Step 6



- Use [tweezers](#) to remove the black cushion surrounding the camera lens.

Step 7



- Use tweezers to lift the camera assembly away from the device.

⚠ Lift straight up to avoid tearing the delicate ribbon cable on the retaining wall.

To reassemble your device, follow these instructions in reverse order.