



One Education Infinity:One Battery Replacement

This guide will detail how to safely remove the battery from the One Education Infinity:One .

Written By: Taylor Bratsch



INTRODUCTION

This guide will detail how to safely remove the battery from the One Education Infinity:One laptop.



TOOLS:

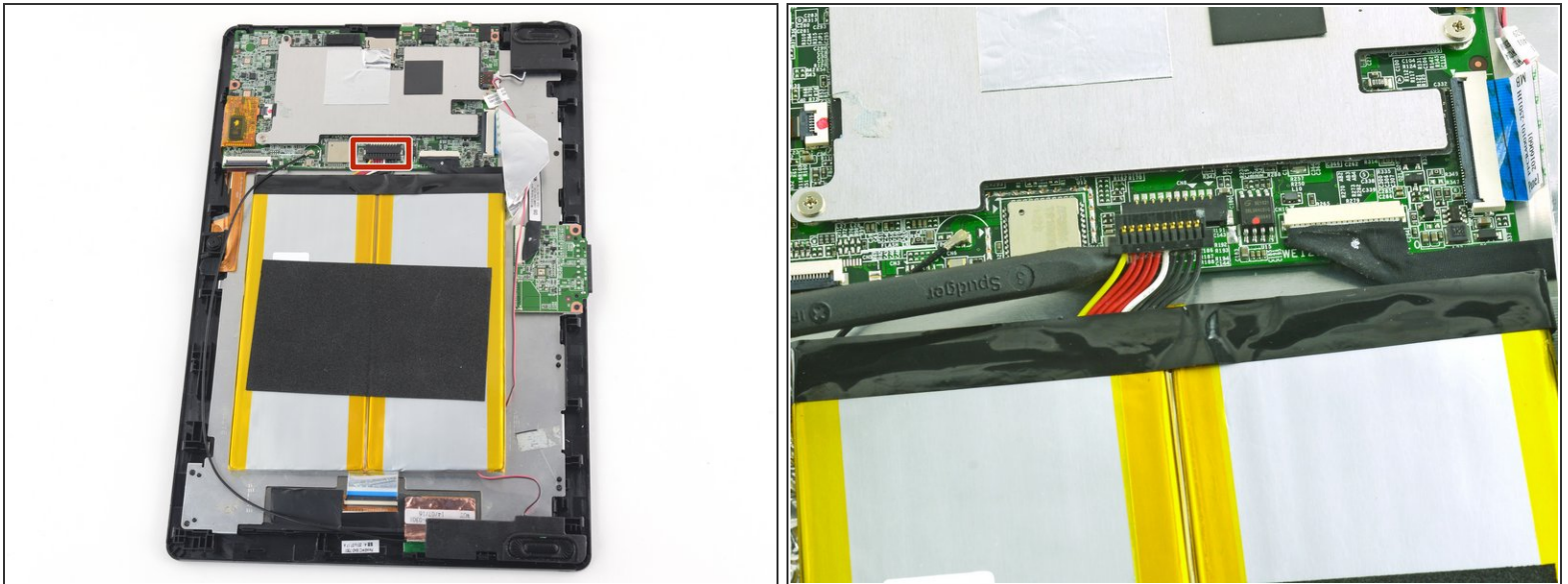
- [Jimmy](#) (1)
 - [Heavy-Duty Spudger](#) (1)
-

Step 1 — Top Case



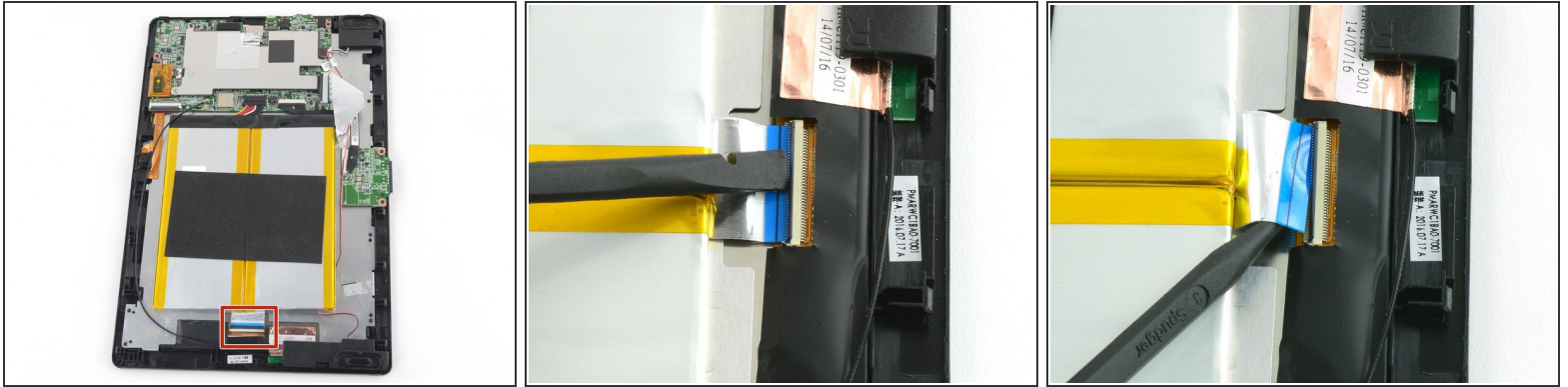
- Insert a Jimmy or other prying tool into the seam between the screen and back case.
- Trace around the edges until all clips are released.
- Lift the back case away from the tablet.

Step 2 — Battery



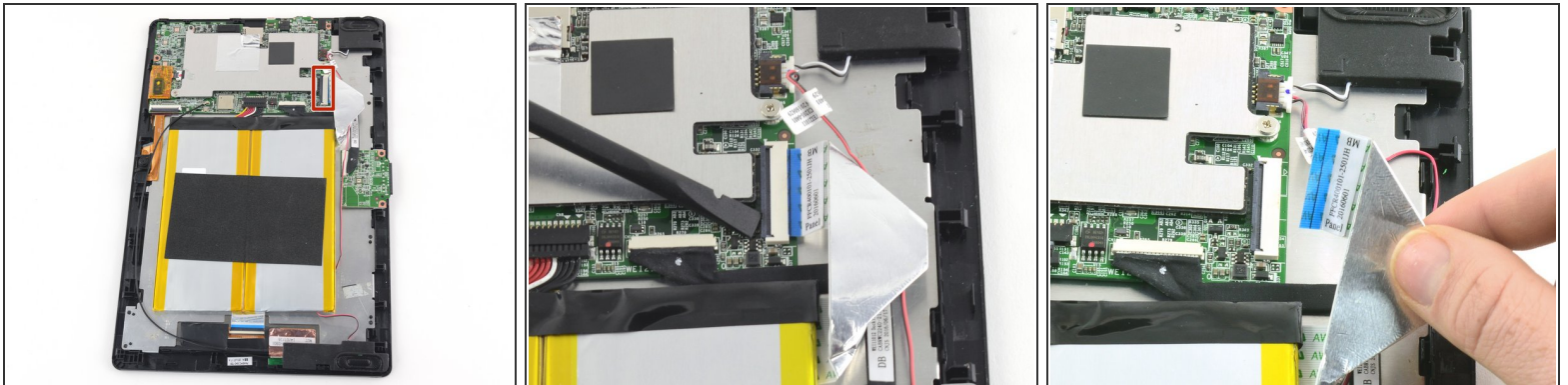
- Use a spudger to disconnect the black bundled cable connector from the motherboard.

Step 3



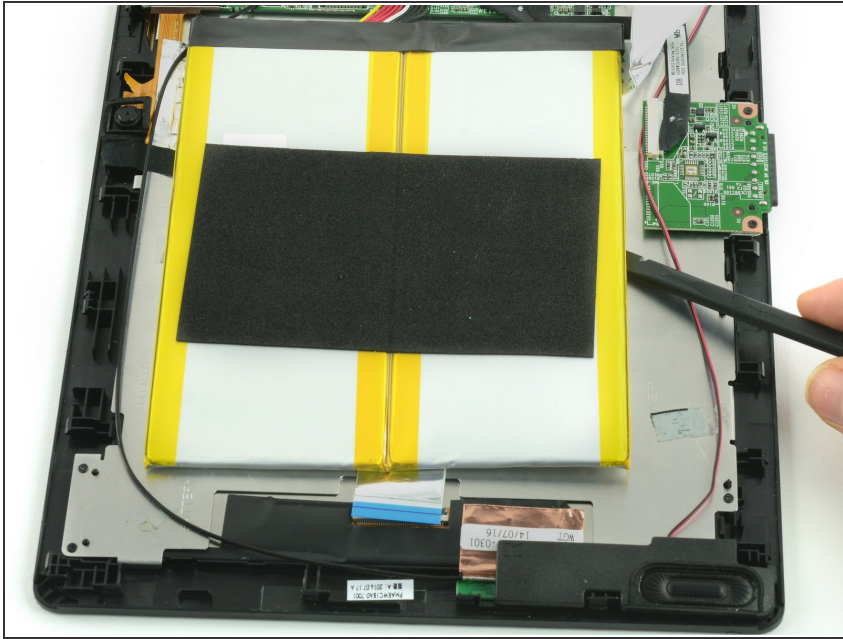
- Use a spudger to lift the black tab on top of the ZIF connector.
- Slide the ribbon cable out of the connector.

Step 4



- Use a spudger to flip up the black retaining flap on the ZIF connector.
- Pull the folded ribbon cable straight out of the connector.
- ⓘ This ribbon cable must be disconnected before removing the battery because it is attached to the battery with adhesive.

Step 5



- Use a spudger to pry the battery away from the device.

⚠ Always use ESD safe tools when working with delicate electrical components.

To reassemble your device, follow these instructions in reverse order.