



Lorex LW2742 LCD Display Replacement

Replacing the screen on your Lorex LW2742 LCD monitor.

Written By: Alex Kusmierz



INTRODUCTION

Is your receiver screen cracked, broken, or pixelated? Try replacing the screen to solve this problem.



TOOLS:

- [Phillips #1 Screwdriver](#) (1)
 - [iFixit Opening Tools](#) (1)
 - [Tweezers](#) (1)
-

Step 1 — Back Panel



- Remove the battery cover on the back of the LCD monitor by unscrewing one 5mm Phillips #1 screw.
- Slide the battery out of the housing. Lightly tap the opposite end of the monitor if the battery does not come right out.

Step 2




- Remove the four 6mm Phillips #1 screws on the back of the LCD monitor.

Step 3



- Using a plastic opening tool, gently separate the back panel from the front panel, working the tool around the panel to disconnect it.

- Carefully remove the back panel

 The speaker wire is connected to the motherboard so DO NOT rip back panel away from the monitor.

Step 4 — LCD Display



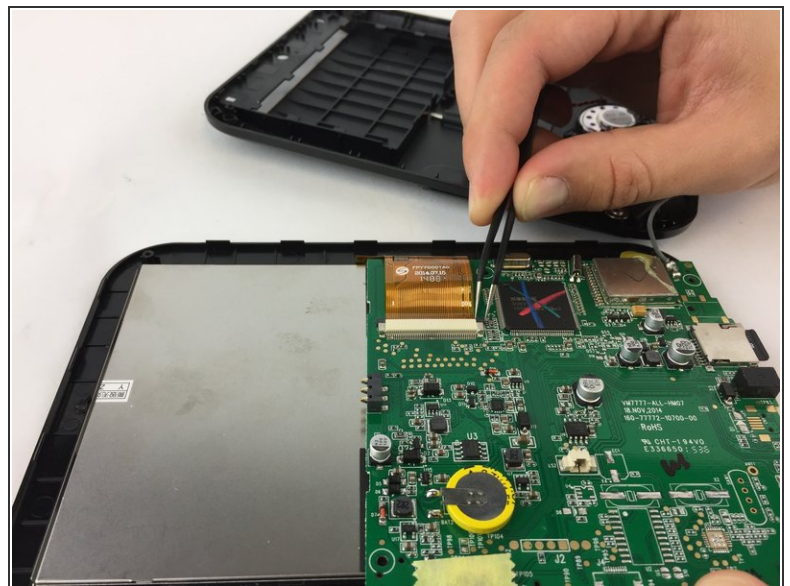
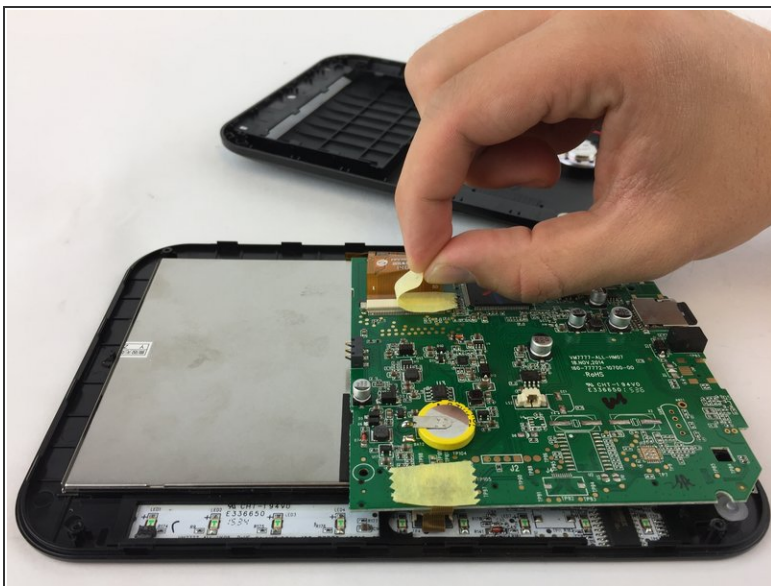
- Locate the motherboard and carefully pull the red and black speaker wires out of their harness.

Step 5



- Remove the two 5mm Phillips #1 screws that are holding the motherboard in place.

Step 6



- Peel away the yellow tape that is covering the large harness.
- Use needle-nosed tweezers to pull out the black tabs that are holding the film in the harness and gently pull the film out of the harness.

Step 7



- Flip the back panel and motherboard over to reveal the back of the LCD monitor

Step 8



- The LCD monitor will easily come out of the front casing of the monitor.

To reassemble your device, follow these instructions in reverse order.