



Lorex LW2742 Speaker Replacement

Replacing your Lorex LW2742 LCD monitor's speaker.

Written By: Alex Kusmierz



INTRODUCTION

Is your receiver's sound distorted, or not producing sound when watching video? Try replacing the speaker to solve this problem.

TOOLS:

- [Phillips #1 Screwdriver](#) (1)
 - [iFixit Opening Tools](#) (1)
 - [Metal Spudger Set](#) (1)
 - [Tweezers](#) (1)
-

Step 1 — Back Panel



- Remove the battery cover on the back of the LCD monitor by unscrewing one 5mm Phillips #1 screw.
- Slide the battery out of the housing. Lightly tap the opposite end of the monitor if the battery does not come right out.

Step 2




- Remove the four 6mm Phillips #1 screws on the back of the LCD monitor.

Step 3



- Using a plastic opening tool, gently separate the back panel from the front panel, working the tool around the panel to disconnect it.

- Carefully remove the back panel

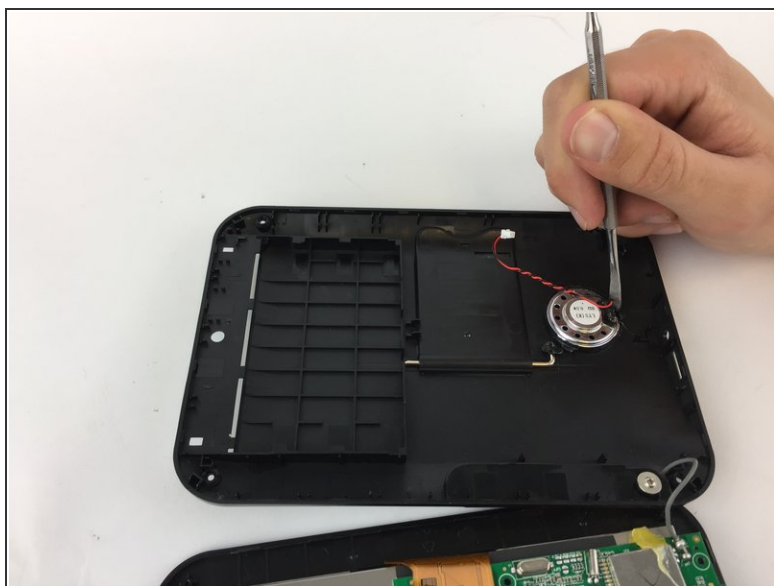
 The speaker wire is connected to the motherboard so DO NOT rip back panel away from the monitor.

Step 4 — Speaker



- Locate the motherboard and carefully pull the red and black speaker wires out of their harness.

Step 5



- Using a metal spudger, pry the melted black plastic away from the speaker.
- Carefully pull the speaker out of its housing by the wires.

To reassemble your device, follow these instructions in reverse order.