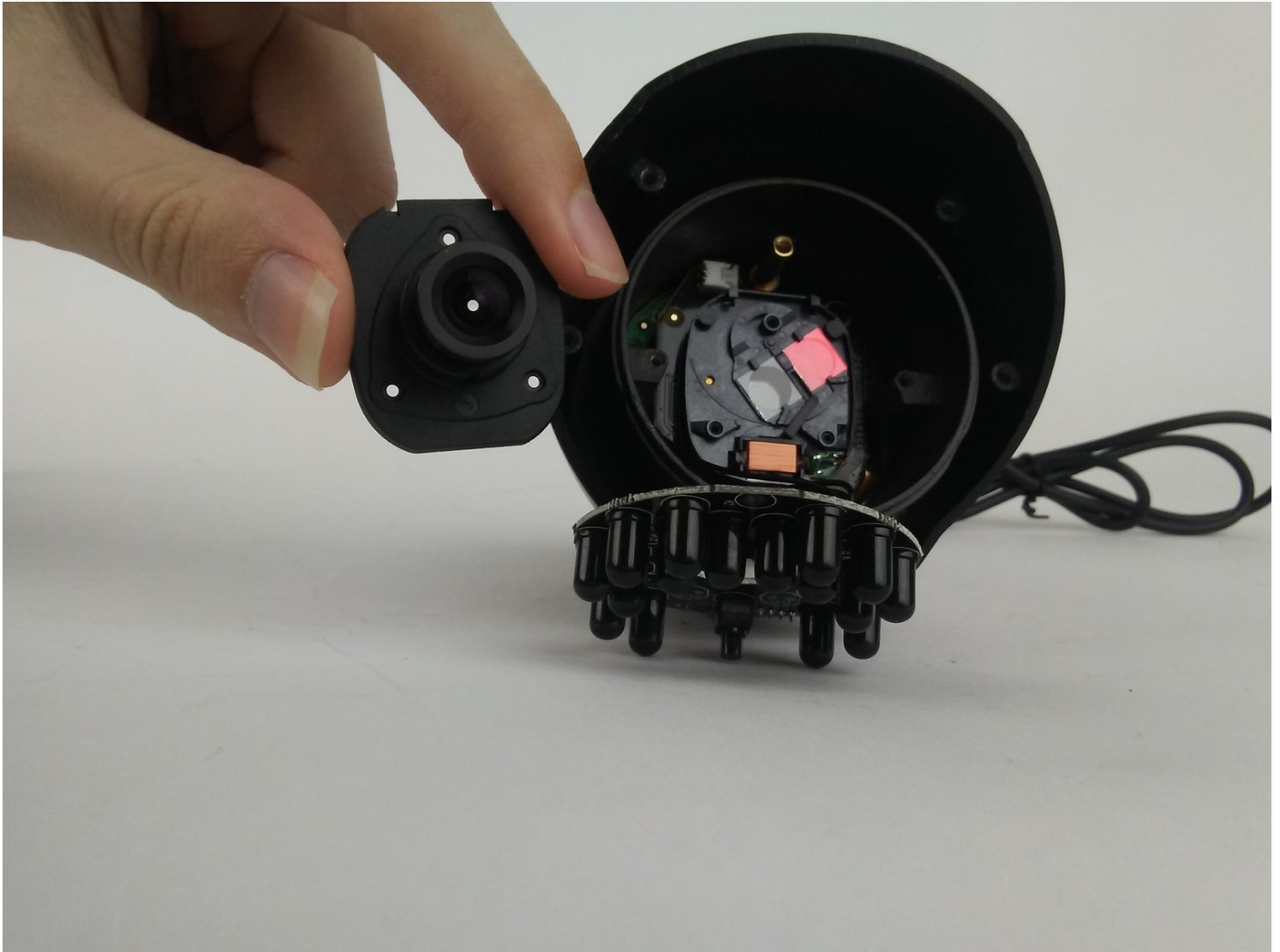




Lorex LW2742 Lens Replacement

Is there a scratch, chip, or crack in your lens...

Written By: Alex Kusmierz



INTRODUCTION

Is there a scratch, chip, or crack in your lens causing your image to be blurry? Replacing the lens may solve this problem.

TOOLS:

Tweezers (1)

TR10 Torx Security Screwdriver (1)

Phillips #000 Screwdriver (1)

Phillips #0 Screwdriver (1)

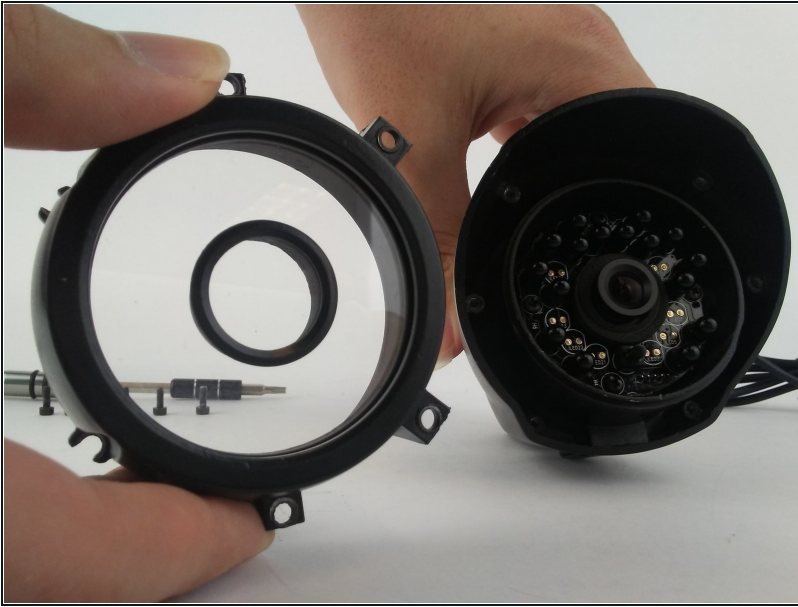
Phillips #1 Screwdriver (1)

Step 1 — Lens



- Remove the six 10mm Torx T10 screws on the camera face.

Step 2



- Remove the exterior lens cover.

Step 3



- Remove the foam ring around the lens with [tweezers](#).

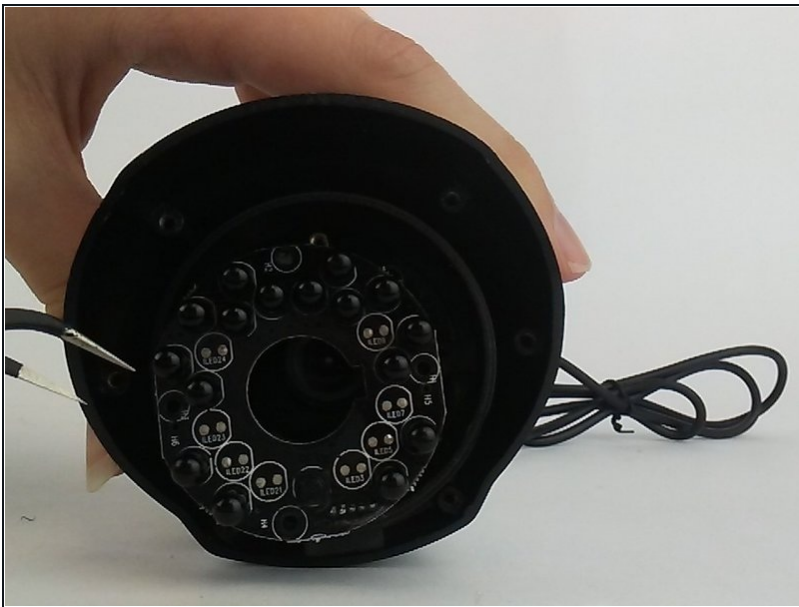
⚠ Be aware, the electronic components of the LED board may be compromised if you use your fingers instead of tweezers for this step.

Step 4



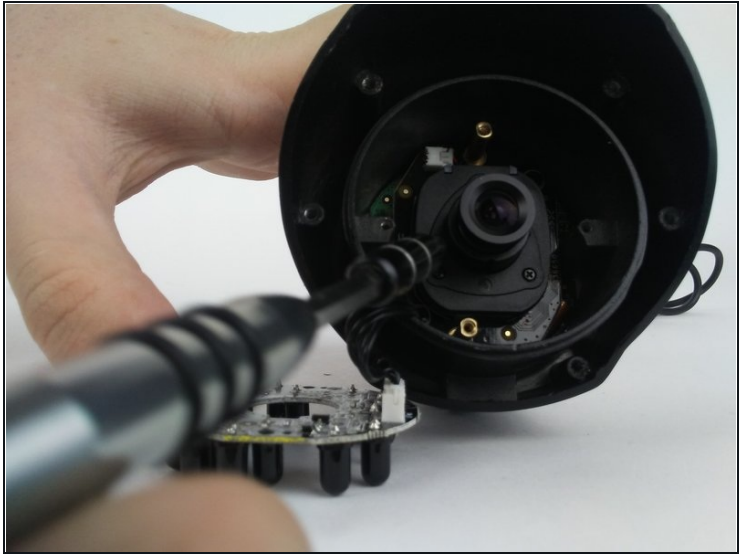
- Remove the two 5mm Phillips #1 screws.
- Remove the two 8mm Phillips #0 screws.
- ☑ When reassembling, tighten the top and bottom 5mm screws first, followed by the left and right 8mm screws.

Step 5



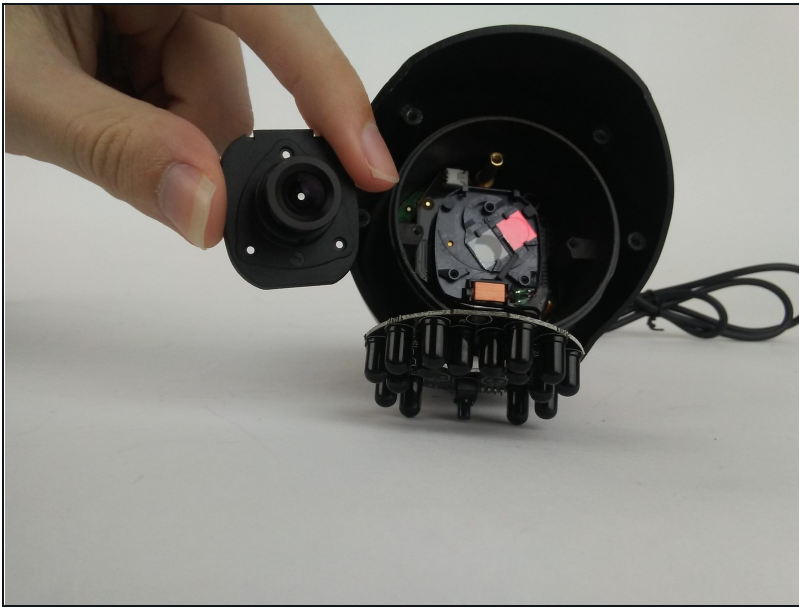
- Remove the LED board with tweezers.
- ⓘ It is unnecessary to unplug the LED board from internal components for lens replacement.

Step 6



- Use the Phillips #000 to remove the three 3mm screws on the face of the camera lens

Step 7



- Remove the camera lens.
- ① After replacing camera lens and before reassembly it is encouraged to clean new lens surface with a microfiber lens cleaning cloth

To reassemble your device, follow these instructions in reverse order.