



# TomTom GO 500 Battery Replacement

Replace the battery in your TomTom GO 500.

Written By: Oriana Hone



---

# INTRODUCTION

The battery is underneath the motherboard so power off the device before starting the disassembly.

---



## TOOLS:

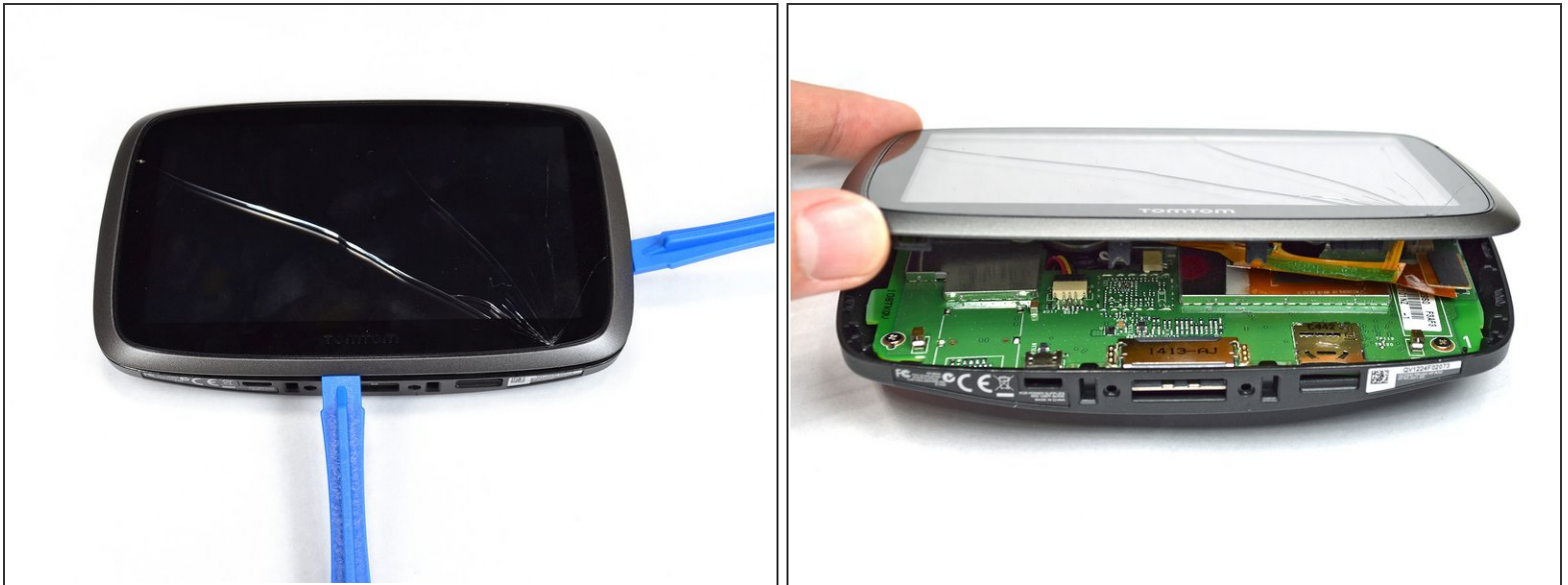
- [T5 Torx Screwdriver](#) (1)
  - [Precision Tweezers Set](#) (1)
  - [Phillips #0 Screwdriver](#) (1)
  - [iFixit Opening Tools](#) (1)
-

## Step 1 — TomTom GO 500 Opening the Device



- Unscrew the two 3mm screws at the base of the device using the Torx T5 screwdriver.

## Step 2



- Using the plastic opening tools, insert one opening tool into the gap between the screen casing and the motherboard casing. Then insert the other tool into one of the adjacent sides and slide it around the top.
- ⓘ There are 14 latches that need to be undone.
- ⚠ The latches break easily during the opening process so we recommend purchasing a new screen casing if they break.

## Step 3



- With the screen casing unlatched, locate the right side where the two connectors are.

## Step 4



- Unlatch the connectors using the plastic opening tool.
- ⓘ The orange rectangular connector may have come off in the process of removing the screen casing.

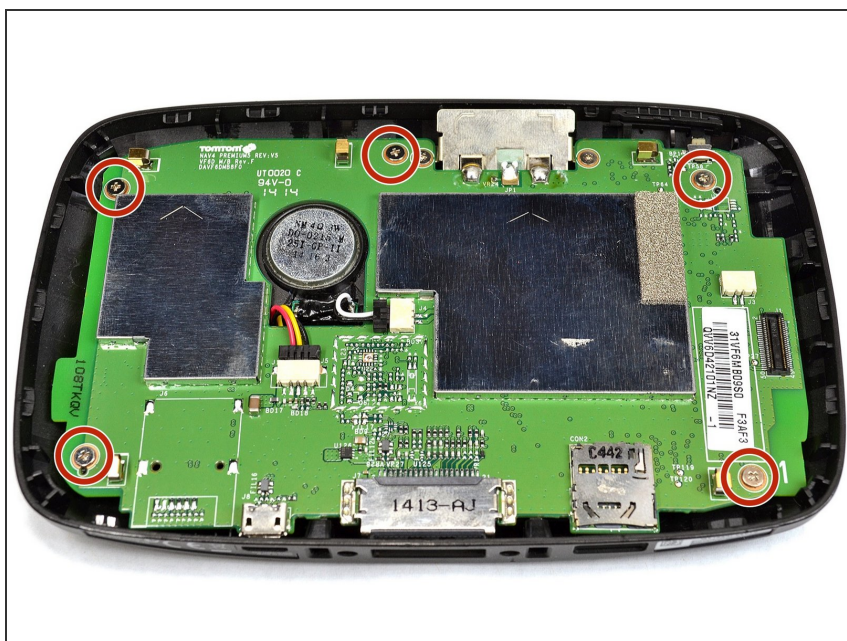


## Step 5



- Separate the screen casing from the motherboard casing.

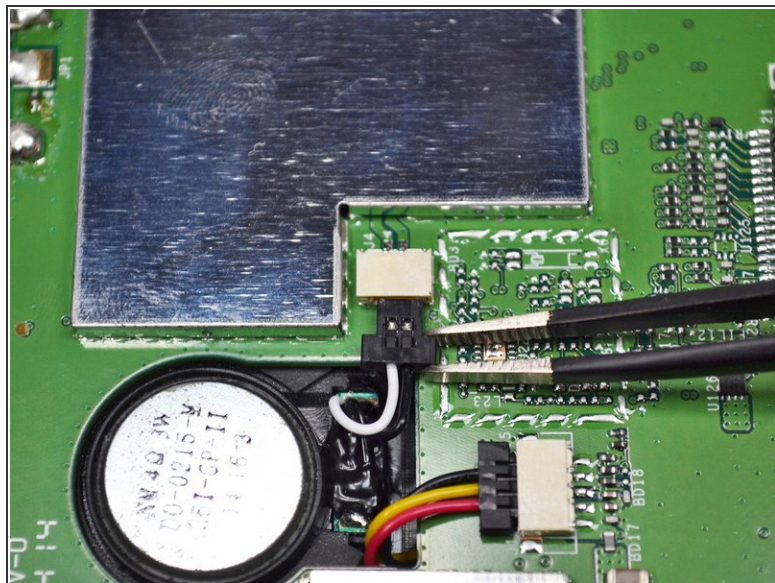
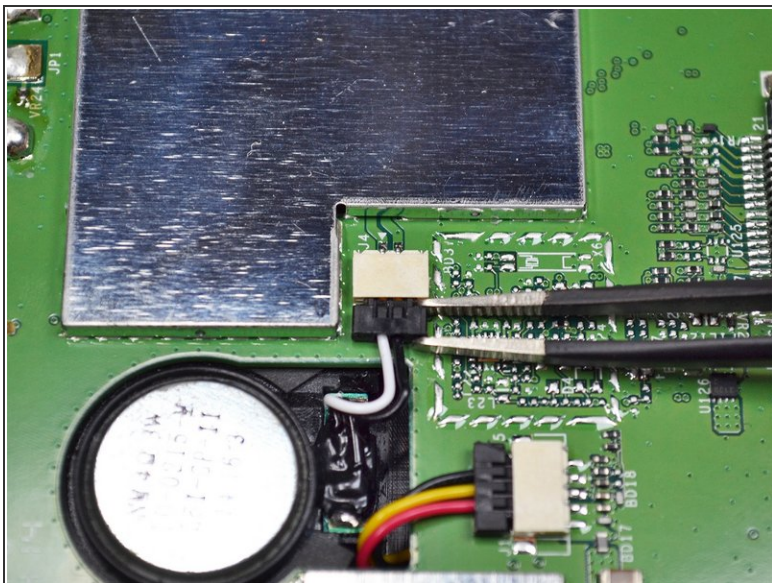
## Step 6 — Motherboard



- Unscrew the five 4mm screws using the Phillips #0 screwdriver.

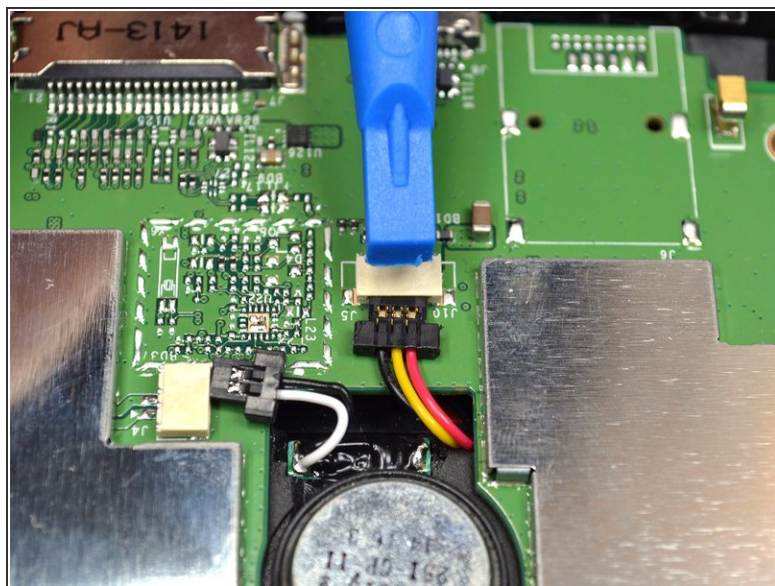
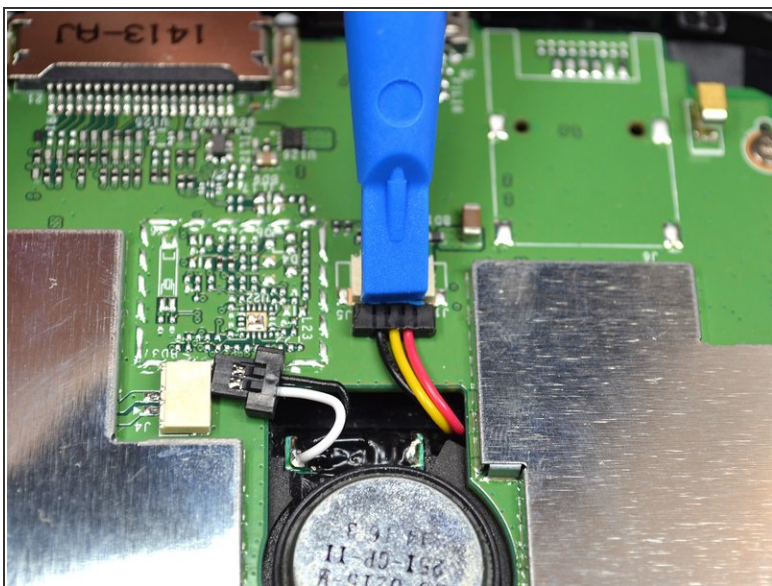


## Step 7



- Unplug the connector shown near the center of the motherboard using the tweezers.

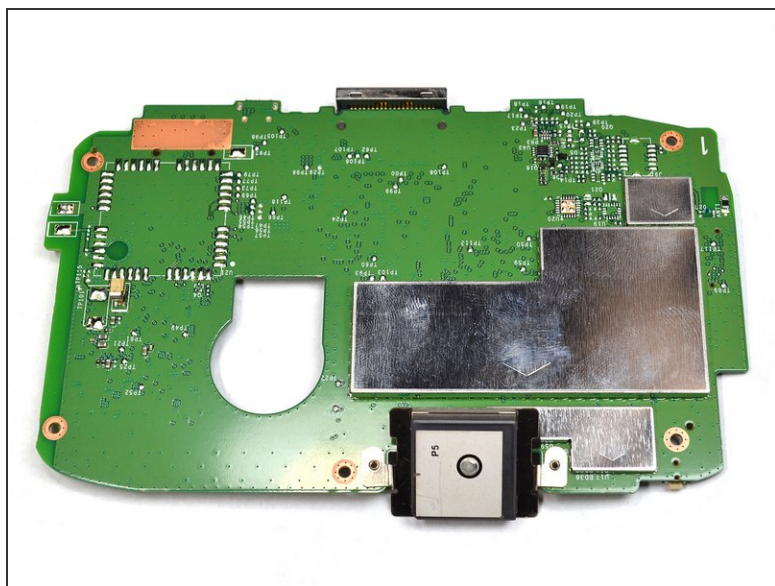
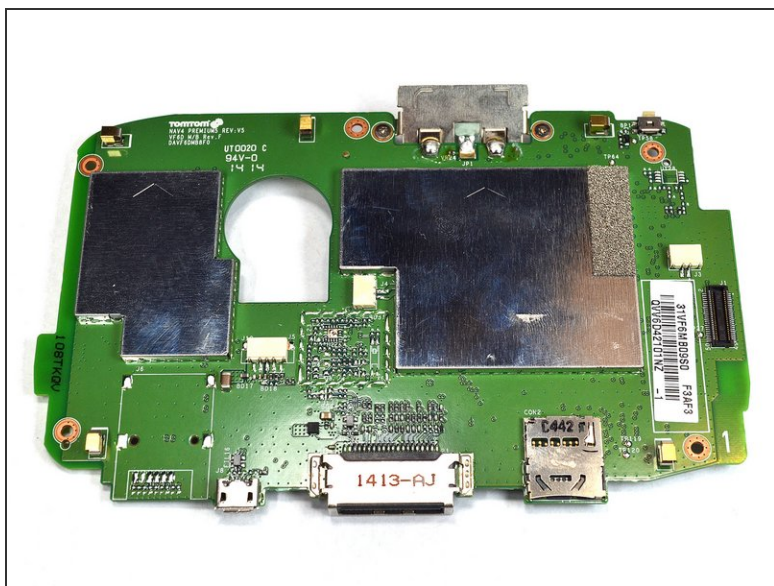
## Step 8



- Unplug the second connector using the plastic opening tool.



## Step 9



- Remove the motherboard from the casing.

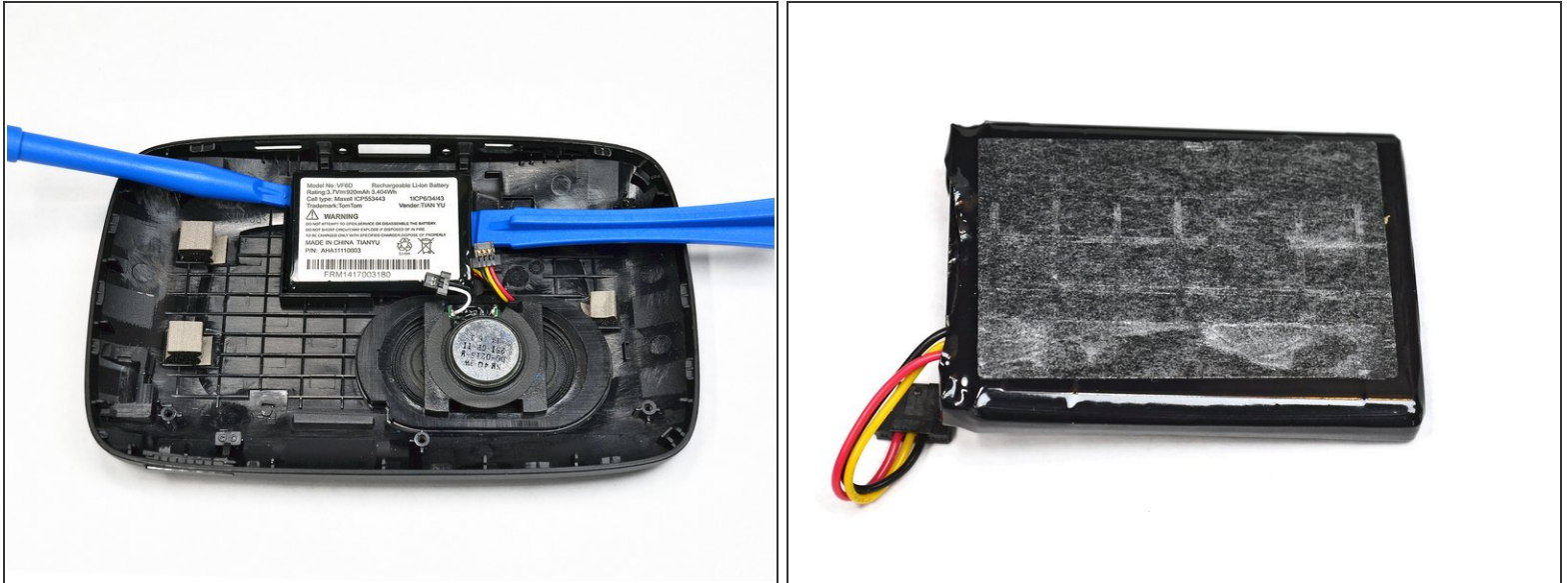
## Step 10 — Battery



- After opening the device and removing the motherboard, you will see the battery attached to the frame.



## Step 11



- Use the plastic opening tools on both sides of the battery to carefully pry it off of the frame.
- ❗ The battery attaches to the frame with double-sided tape so this should be fairly easy to remove.
- ❗ In this image, a smaller plastic tool was used on the left side while a larger one was used on the right side.

To reassemble your device, follow these instructions in reverse order.