



# HP G71t-300 Hard Drive Replacement

Since the Hard drive bay is 2.5", you can...

Written By: Rohan Mathew



# INTRODUCTION

Since the Hard drive bay is 2.5", you can replace the HDD with either a 2.5" HDD or a Solid State Drive (SSD). Note that SSD's are more expensive compared to HDD's of similar storage size.

---

## TOOLS:

Phillips #0 Screwdriver (1)

Magnetic Project Mat (1)

---

## Step 1 — Hard Drive



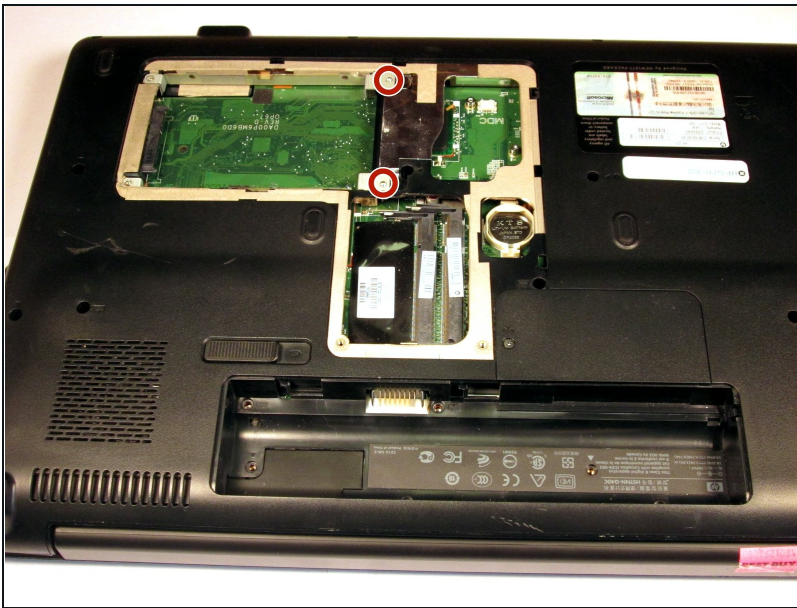
- Ground yourself by either touching an unpainted metal surface or by using the [Anti-Static wrist strap](#).
- Turn off the computer and remove the charger from the charging port.
- Turn the laptop over and slide the battery release catch to the right. The battery will pop up from its slot. Remove it using your fingers

## Step 2



- The access panel to the hard drive and RAM is held in place by four screws. Loosen them using a Phillips #0 screwdriver.
- Gently lift the panel away from the computer.

## Step 3



- Remove the two 6mm screws using the Phillips #0 screwdriver.
- Gently remove the hard drive from the socket.

To reassemble your device, follow these instructions in reverse order.