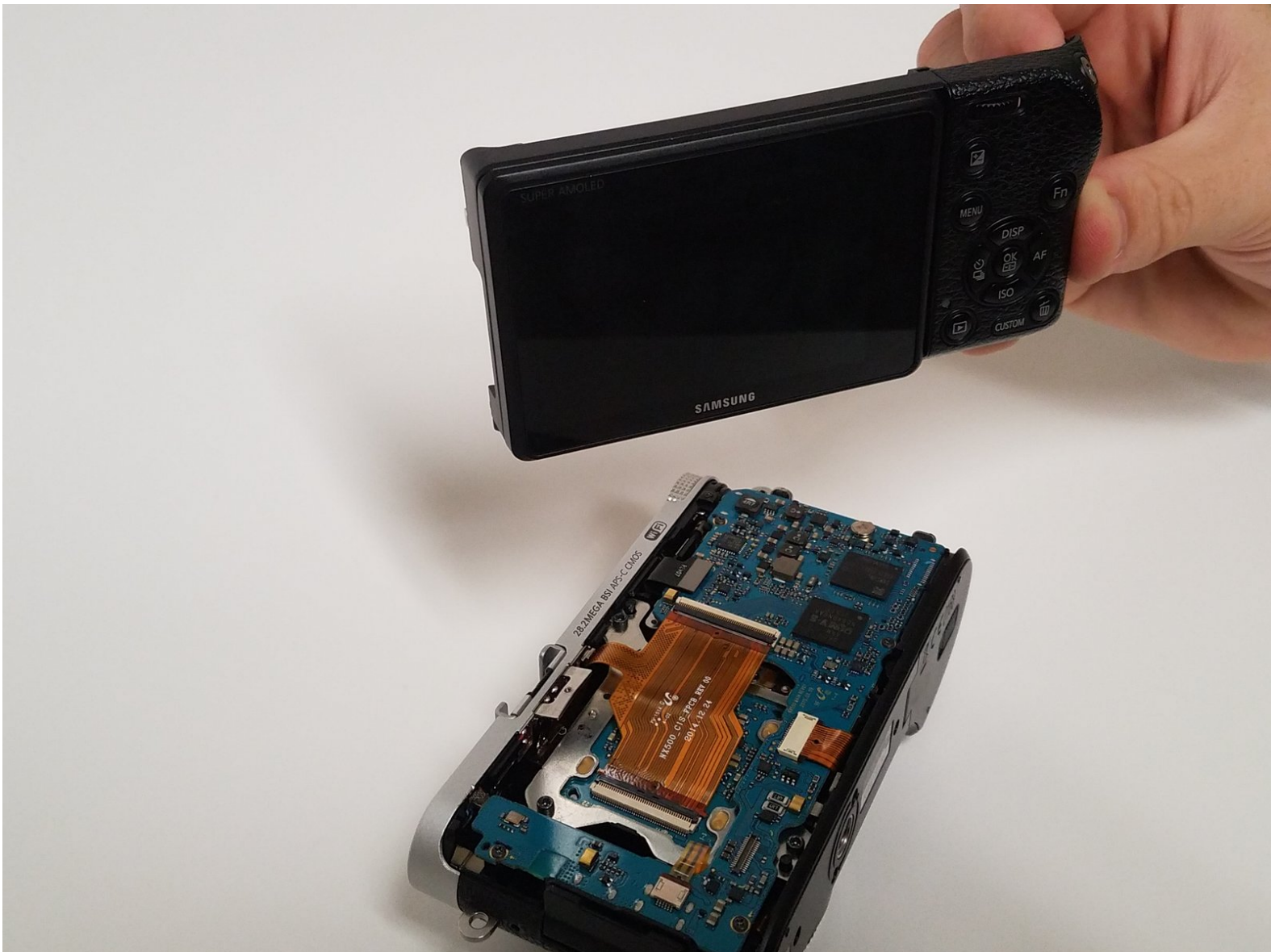




Samsung NX500 Screen Side Encasement Replacement

Replacing the encasement on the screen side. If the screen is broken or the buttons become unresponsive, this side of the encasement may need to be replaced.

Written By: carter grenewicz



INTRODUCTION

Jammed button can cause prohibit the camera to function or do what you want it to. The whole encasement needs to be replace and is easier to do as opposed to fixing one single button.



TOOLS:

- [Phillips #000 Screwdriver](#) (1)
 - [iFixit Opening Tools](#) (1)
-

Step 1 — Battery



- Pull the switch on the bottom of the camera back with your thumb.

Step 2



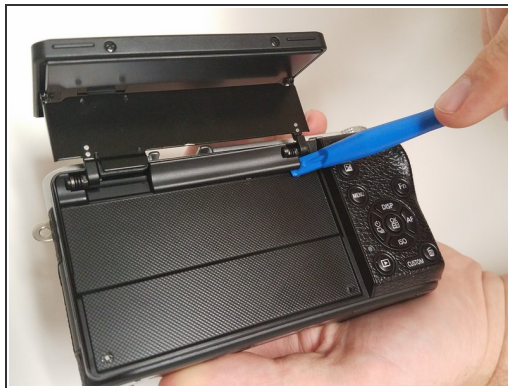
- Push second switch(blue) forward with your thumb.

Step 3



- Pull out battery.

Step 4 — Screen Side Encasement



- Open the screen exposing the hinge cover and place the plastic opening tool inside.
- Pry the hinge cover up by moving the plastic opening tool in a downward motion.
- Remove the black 4mm Phillips #000 screw that is revealed once the hinge cover is removed.

Step 5




- Unscrew the two 4 mm Phillips #000 screws on the right hand side of the camera using the screwdriver.
- Unscrew five more 4 mm Phillips #000 screws that are located at the bottom of the camera with the screwdriver.
- ⓘ In the second step, do not the remove the two 4 mm Phillips #000 screen on the screen.
- Remove the last exterior 4 mm Phillips #000 screws on the left hand side of the camera with the screddriver.

Step 6




- Use the plastic opening tool in a downward motion around each side of the camera to pry the casing open.

 The casing should be removed easily; you shouldn't have to use much force.

Step 7



- Locate the black ribbon at the bottom left of the camera's interior.
- Place the plastic opening tool under the black ribbon connector.
- Remove the cable by moving your plastic opening tool in a downward motion.

 There is zero to little force needed to remove this ribbon.

To reassemble your device, follow these instructions in reverse order.