



HP Slate 7 Extreme 4400US Back Cover Replacement

This guide will present the steps needed to remove and replace the black plastic cover of the HP Slate 7 Extreme 4400US Tablet

Written By: Joseph Wilson



INTRODUCTION

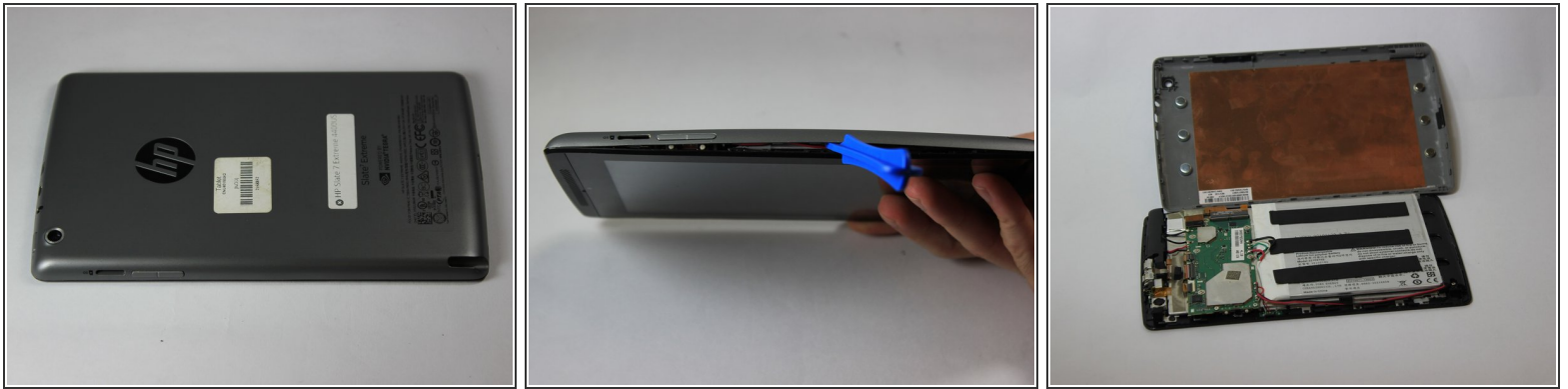
This replacement will need patience, in trying to correctly pop or disconnect the back plastic cover off.



TOOLS:

- [iFixit Opening Tools](#) (1)
-

Step 1 — Back Cover



- Use the plastic opening tool to separate the back cover from the tablet. Carefully use the tool to pry open the sides, going around the entire tablet to lift the sides up.
- Once all sides have been pried up, pull the cover off and place it to the side.

To reassemble your device, follow these instructions in reverse order.