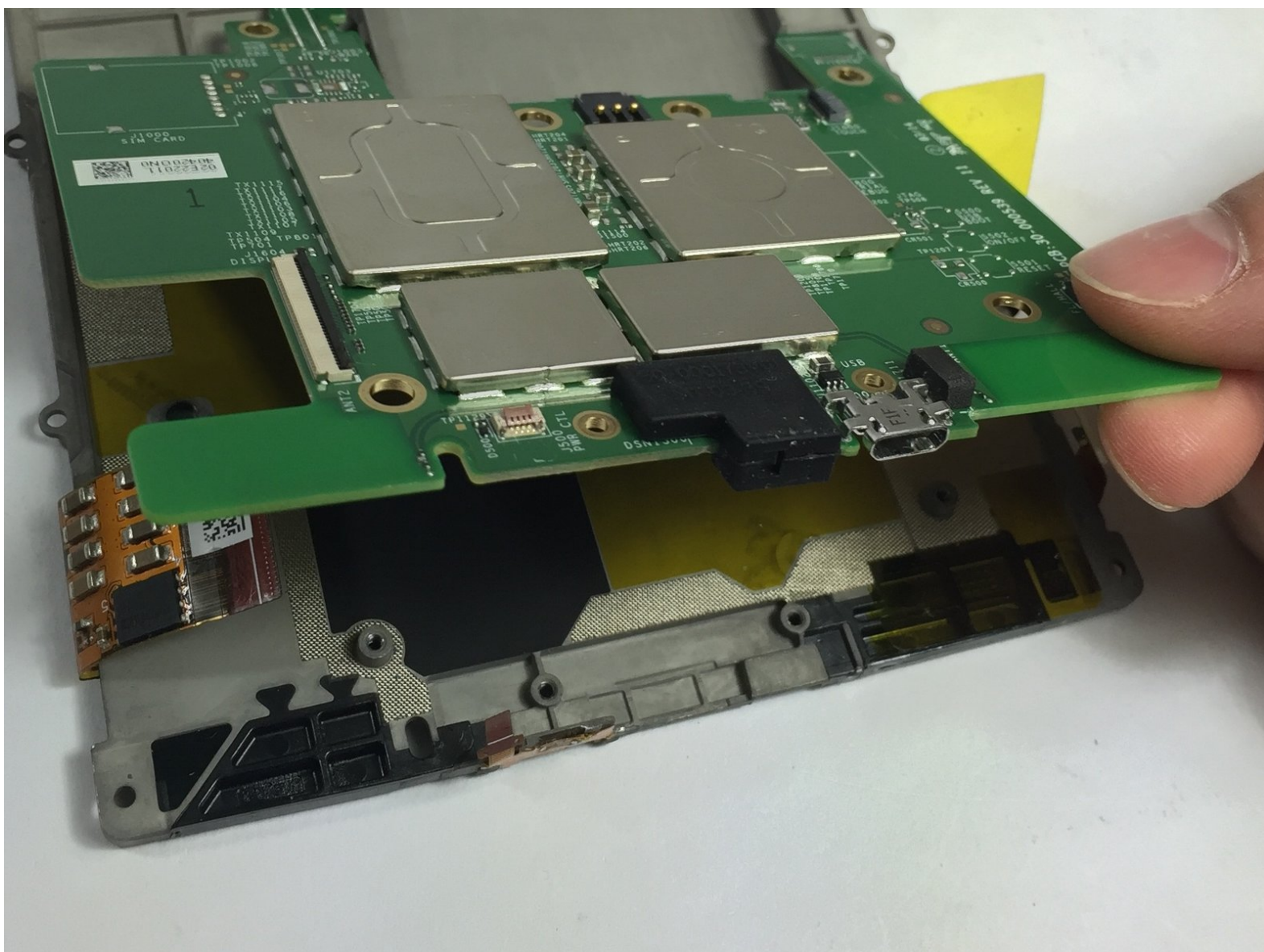




Kindle Paperwhite 2nd Generation Motherboard Replacement

Disassembling a tablet often requires some...

Written By: Tyler Davis



INTRODUCTION

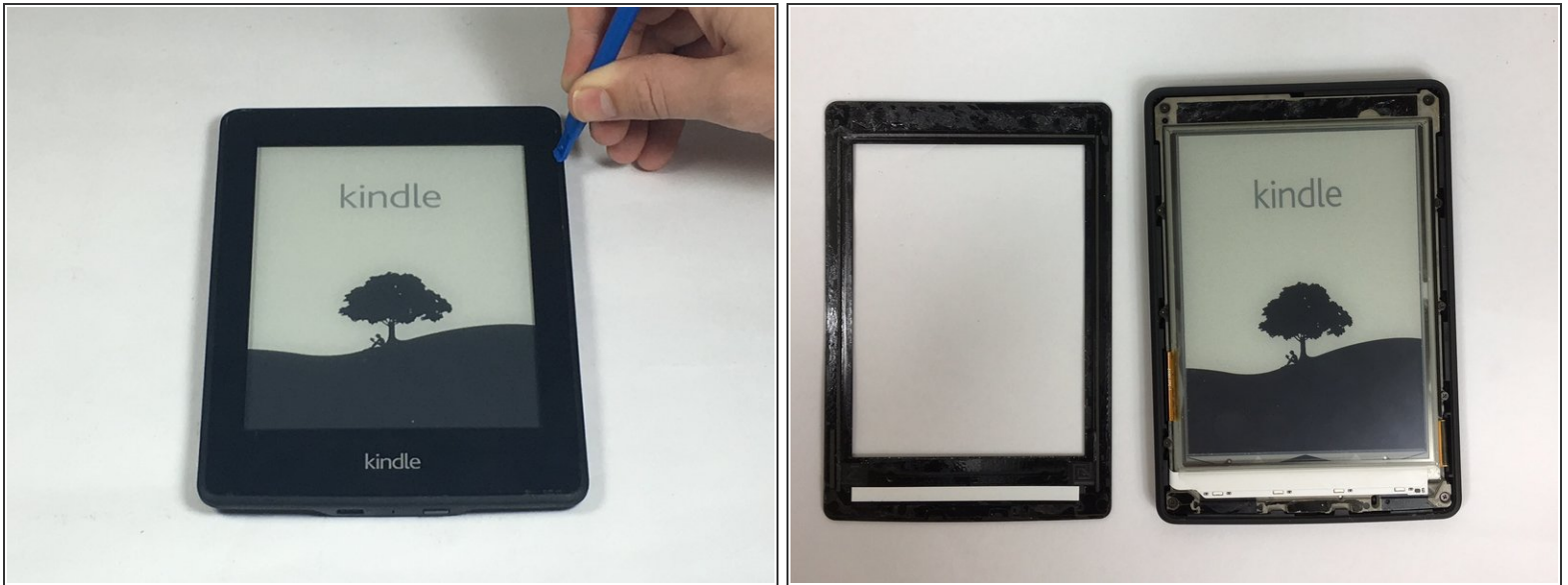
Disassembling a tablet often requires some gentle prying of the frame. Be sure to exercise care during these first few steps(disassembling), and do not lose your screws! The Paperwhite is a sturdy tablet that can be broken down into just a few components. This guide will show you in just eight steps how to replace a faulty motherboard.



TOOLS:

- [iFixit Opening Tool](#) (1)
 - [Phillips #000 Screwdriver](#) (1)
-

Step 1 — Battery




- Insert plastic opening tool into the corners of the Paperwhite and slide around the edge perimeter to remove bezel.
- ⓘ Be sure to begin prying along the outer edges , these are the optimal points for removing the bezel.
- ⚠ Be careful and do not slide prying tool deeper than 3-4 mm under the side bezel or you could peel off screen protector film.

Step 2



- Using a Screw Driver, Remove the eleven 3.2 mm Phillips 000 screws from corners of the mid-frame and from behind the black strip as shown.

 Do not forget the screw in the middle of the black adhesive strip.

Step 3



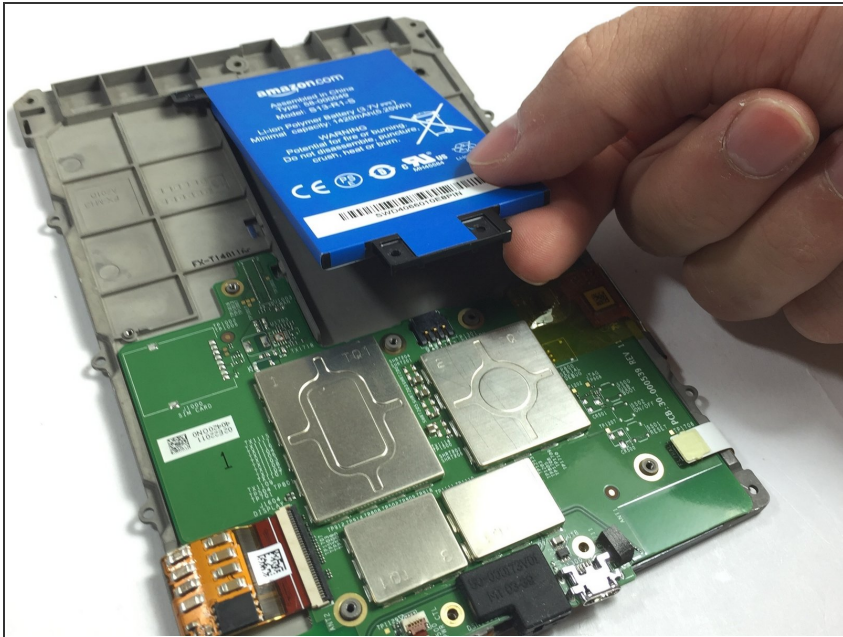
- Carefully remove the mid-frame from the back cover.

Step 4



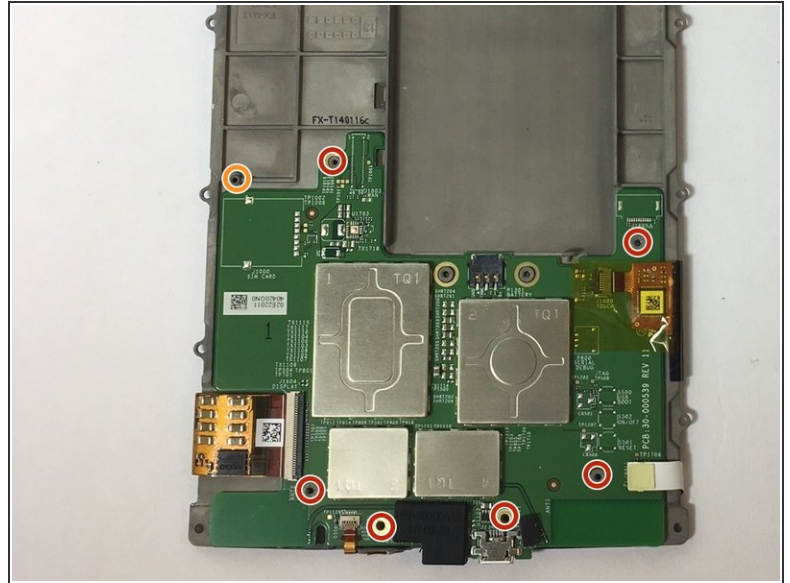
- Use a screwdriver to remove the three 3.0 mm Phillips 000 screws that are holding the battery in place as shown.

Step 5



- Carefully lift the battery and remove it from the device.

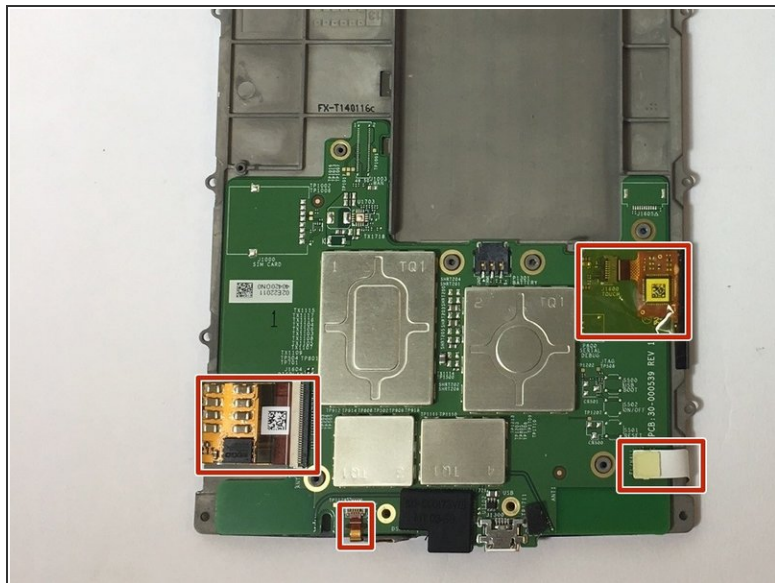
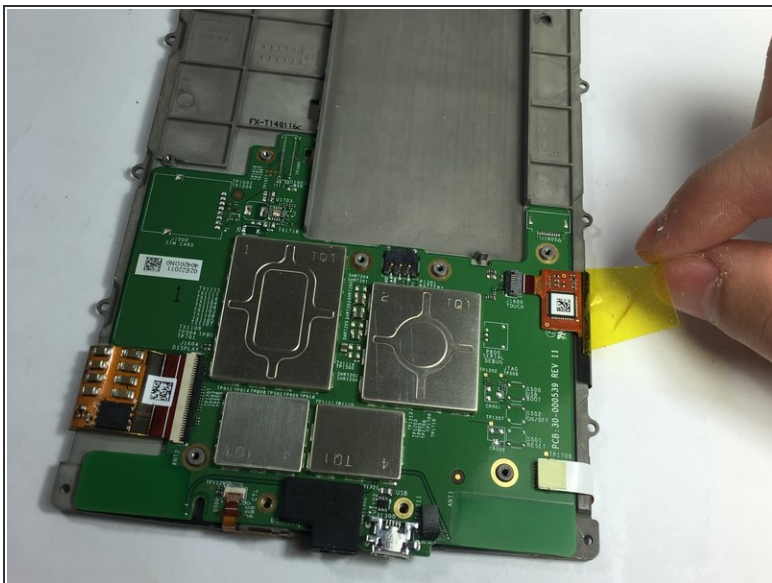
Step 6 — Motherboard



- Use a screwdriver to remove the seven 3.0 mm Phillips 000 screws that are holding the motherboard in place as shown.

⚠ Don't lose the washer that is highlighted with an orange marker as shown. It is a necessary component to protect the screw.

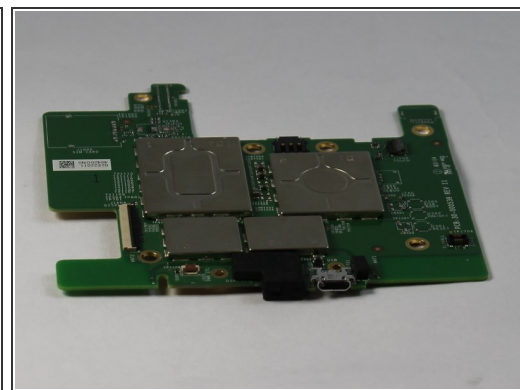
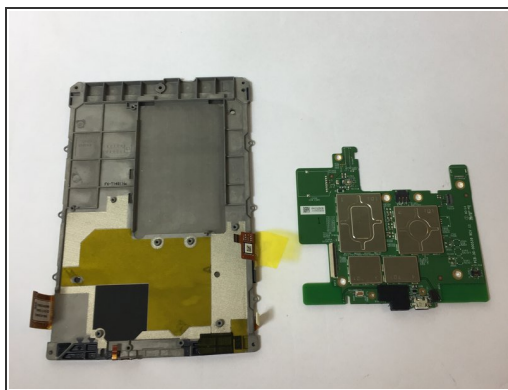
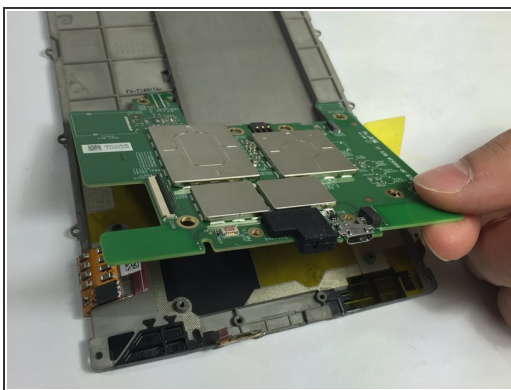
Step 7



- Gently disconnect the zif connectors.

⚠ Some of these connectors are very thin and fragile, handle with care!

Step 8



- Gently remove the motherboard.

To reassemble your device, follow these instructions in reverse order.