



# Nikon Coolpix L32 Front Panel Replacement

To access other components of the camera for replacement, the front panel must be removed. If the front panel of the camera is cracked, consider replacing it.

Written By: Sherika Jacobs



---

## INTRODUCTION

This guide will explain how to replace the front panel of the camera. There are no hazards associated with this replacement.

---



### TOOLS:

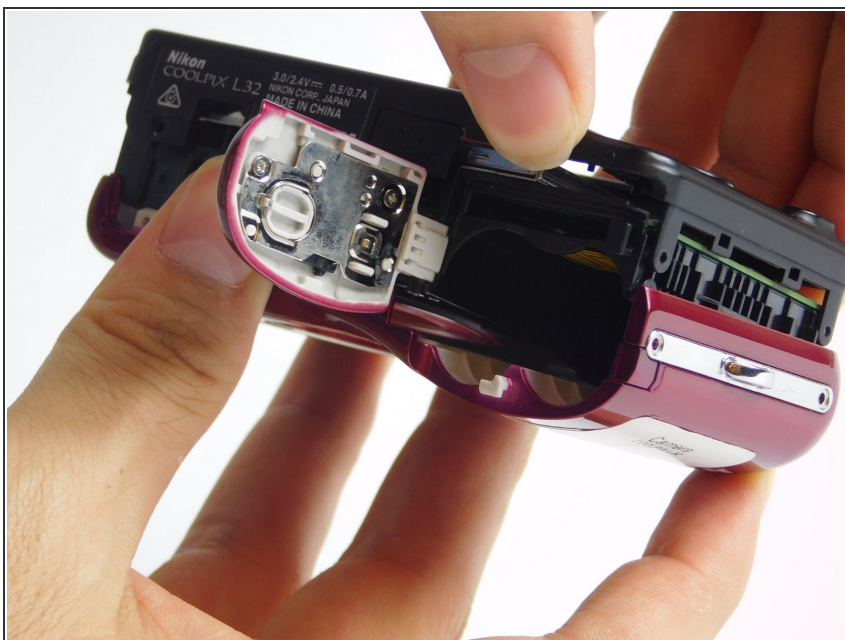
- [Phillips #00 Screwdriver](#) (1)
-

## Step 1 — Front Panel



- Remove the six(3.93mm screws) on the outside of the camera using a Phillips 00 screwdriver.

## Step 2



- Open the battery compartment door and pull the black back face apart from the front red face.

To reassemble your device, follow these instructions in reverse order.