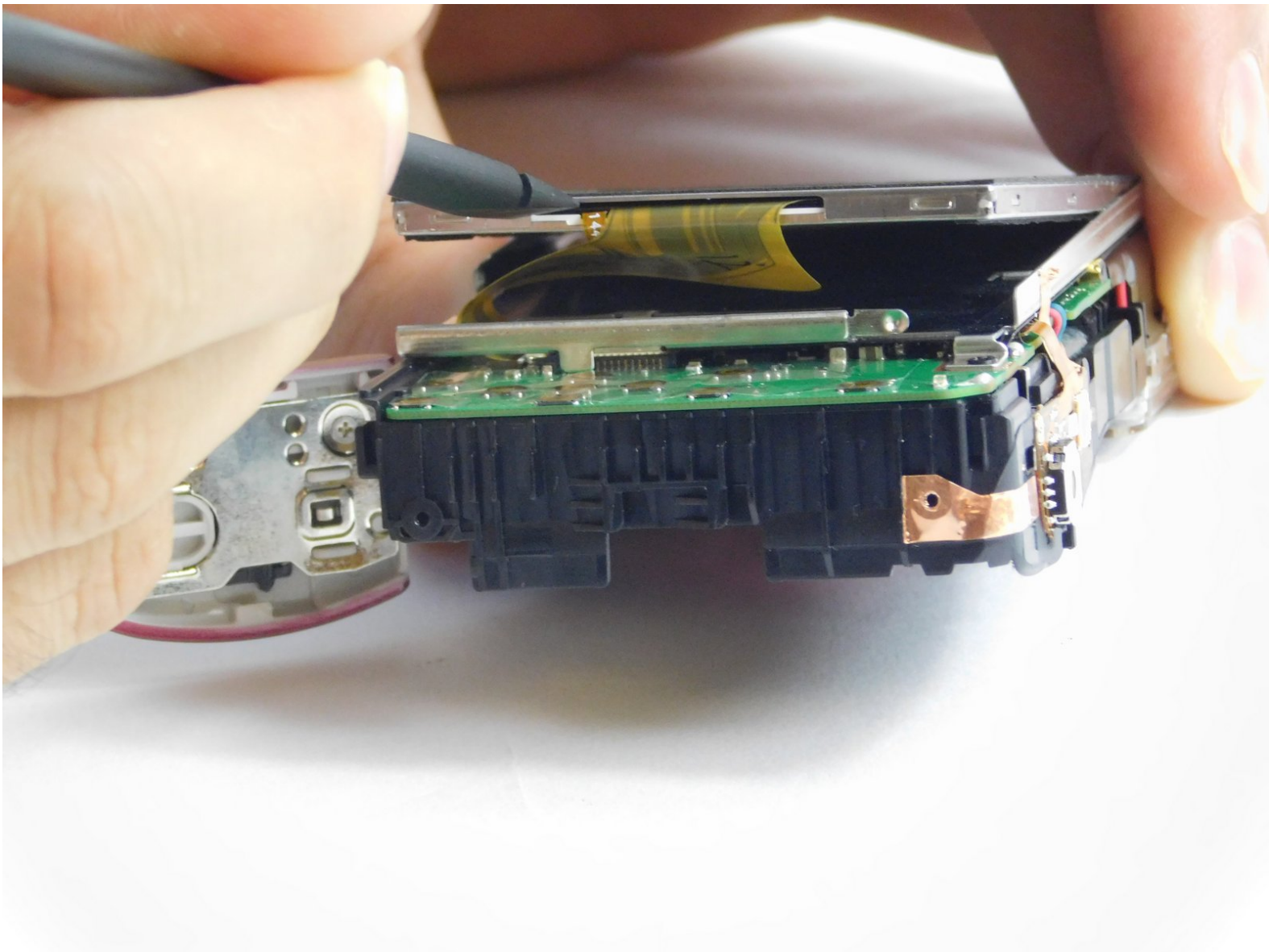




Nikon Coolpix L32 LCD Replacement

Replace the Liquid Crystal Display (LCD) screen to recover the camera from physical damages such as dropping the camera.

Written By: Sherika Jacobs



INTRODUCTION

If the Nikon Coolpix L32 suffered from physical damages and it remains dark after trying to power it on, consider replacing the LCD Screen. No hazards are associated with this replacement.

TOOLS:

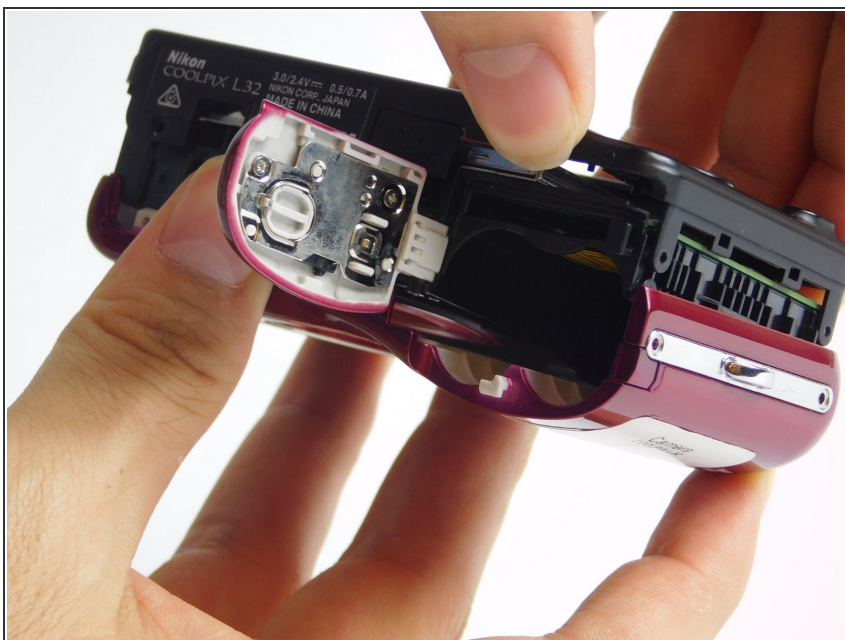
- [Phillips #00 Screwdriver](#) (1)
 - [Spudger](#) (1)
-

Step 1 — Front Panel



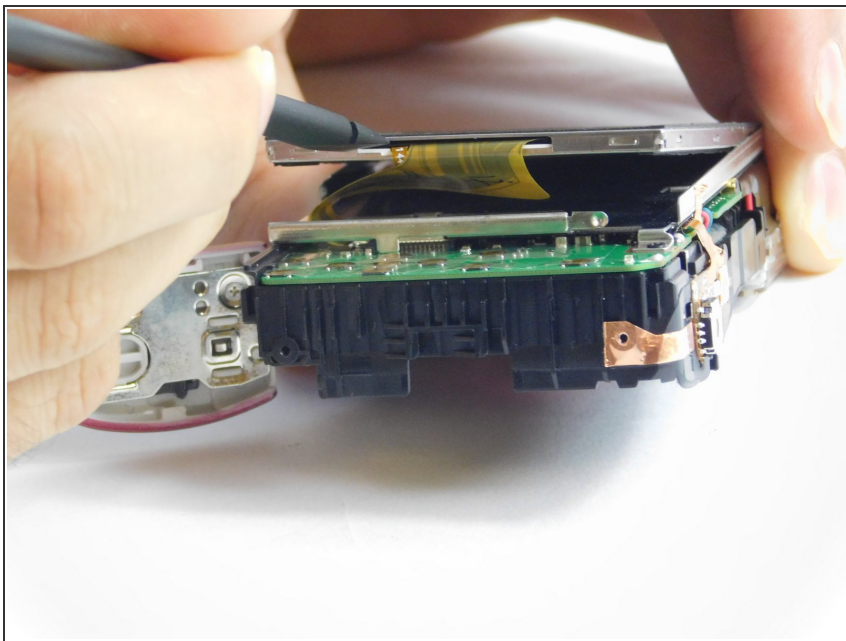
- Remove the six(3.93mm screws) on the outside of the camera using a Phillips 00 screwdriver.

Step 2




- Open the battery compartment door and pull the black back face apart from the front red face.

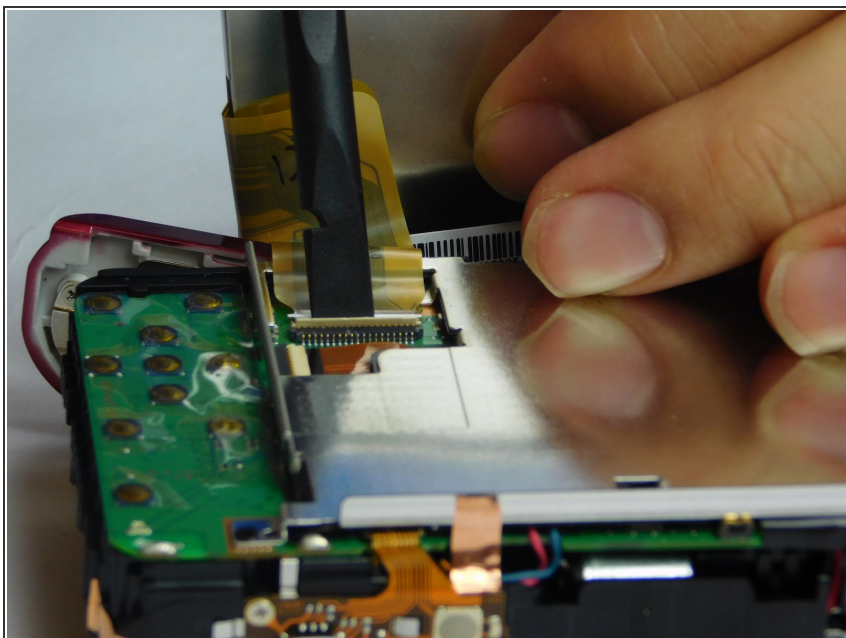
Step 3 — LCD



- Using the spudger, gently pull the LCD screen from the tray holding it.

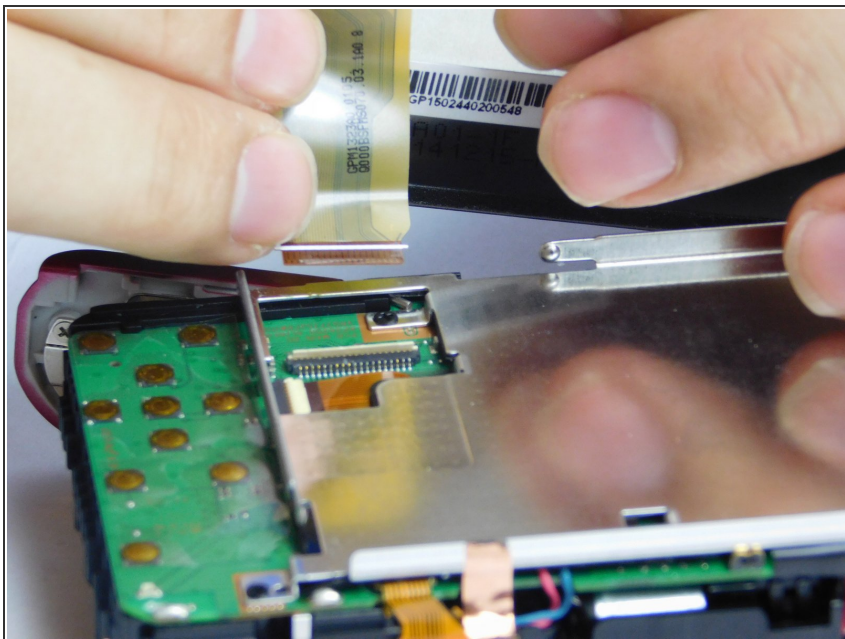
 Do not pull the LCD screen far from the camera because there is a ribbon cable connected to it.

Step 4



- Use the spudger to lift up the small white retaining flap on the motherboard that is connected to the LCD screen's ribbon cable.

Step 5



- With the small retaining white flap up, remove the LCD screen ribbon cable from the motherboard by sliding it out.

To reassemble your device, follow these instructions in reverse order.