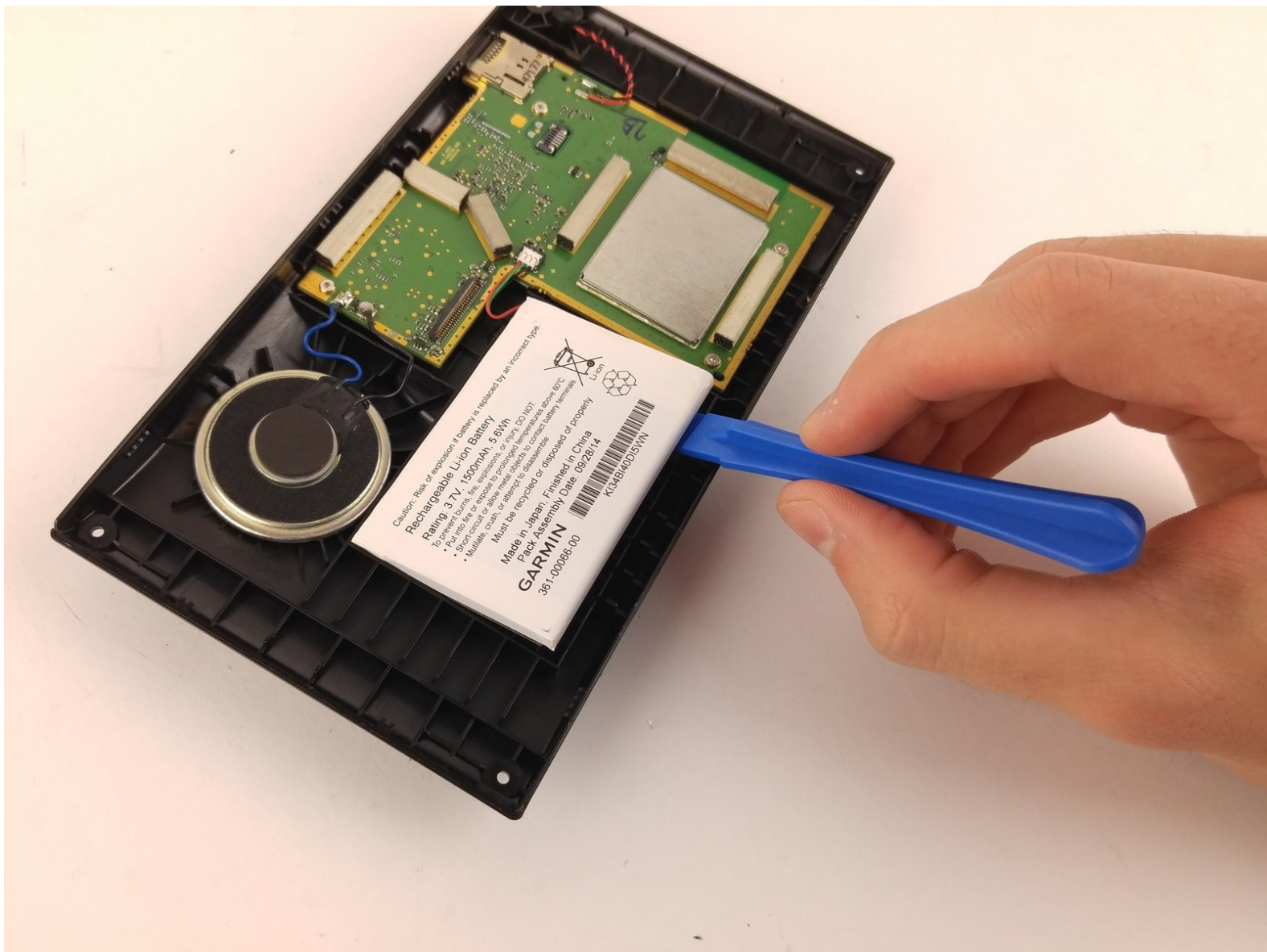




Garmin Nuvi 2689 LMT Battery Replacement

This guide shows the steps in replacing the battery. First the unit has to be opened and the battery will come right out.

Written By: Joseph Lingvay



INTRODUCTION

A faulty battery can cause the device to not power on or take a charge. Replace it.



TOOLS:

- [T5 Torx Screwdriver](#) (1)
 - [iFixit Opening Tools](#) (1)
 - [Heavy-Duty Spudger](#) (1)
-

Step 1 — Battery



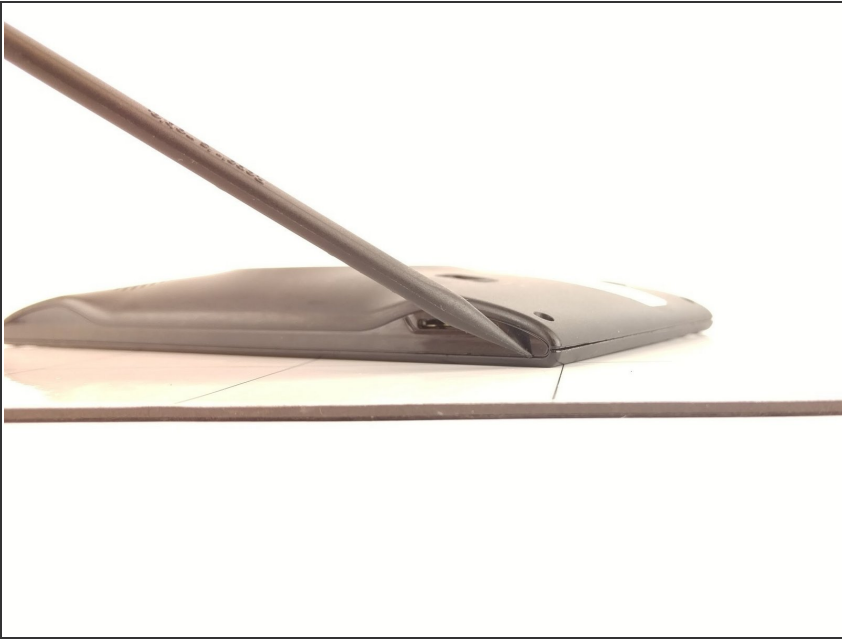
- Remove the stand by pushing down on the tab and pulling the round, plastic piece away from the Garmin unit.

Step 2



- Remove the four, 4mm hex screws from the four corners of the unit.
- ⓘ This will require a T5 Screwdriver.

Step 3



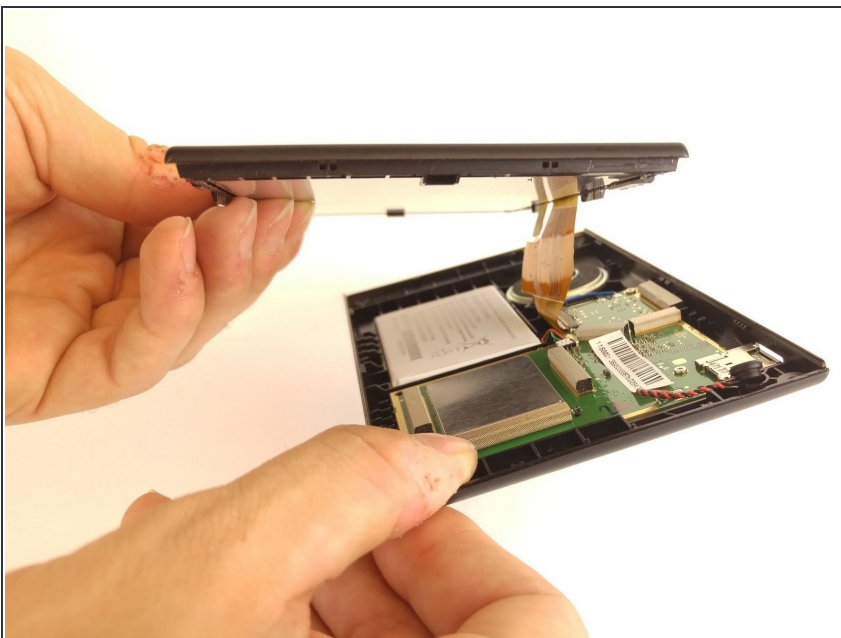
- Place the unit screen-side down flat, with the bottom facing you. There are two seams, the one on top is artificial.
- ⓘ This is the real seam, open it with a plastic opening tool in step 4.

Step 4



- Firmly force a plastic spudger into the bottom seam and pry open a section. Use a prying/pushing motion to force the tool into the unit until you feel a click.
- Repeat this all the way around the seam.

Step 5



- Once the seam is completely separated, you can lift the back away from the screen easily.

Step 6



- Wedge an angled plastic prying tool under the connector at the part where the wires attach and gently pry up.
- ❗ The battery is connected to the main circuit board via two wires, red and green in color, and is attached with a white connector. It should come free easily.

Step 7



- The white battery is attached to the casing with an adhesive. It should be easy to pry the battery up with a prying tool.

Plug the new battery into the same plug, with the wires going the same direction.

Test the unit by powering it on.

If it powers on stick the new battery in place with any glue or tape.

Snap the casing back together and replace the 4 screws, again with a T5 bit.