



Disassembling Sony Clie PEG-SL10

This guide shows you how to disassemble a Sony...

Written By: Steve



INTRODUCTION

This guide shows you how to disassemble a Sony Clie PEG-SL10 through an easy step-by-step process. All you need to perform this repair is a Phillips #0 screwdriver and no additional special skills are required.

This is a precursor to any other repair you may want to do on this device and also allows you to get a good look at its internal workings.

Attached to this guide at the bottom of the page is the Sony Clie PEG-SL10 User Manual.



TOOLS:

- [Phillips #0 Screwdriver](#) (1)
-

Step 1 — Disassembling Sony Clie PEG-SL10



- Start by holding your Sony Clie PEG-SL10 face-up in your hand.

Step 2



- Turn over your Sony Clie and unlock the cover slide lock.

Step 3



- After unlocking the cover slide lock, remove the cover and set aside.

Step 4



- Turn your Sony Clie face-up.
- Using a Phillips #0 screwdriver, remove the six case screws on the sides and bottom of the device.

Step 5



- Remove the front case by gently lifting away from the device.

Step 6



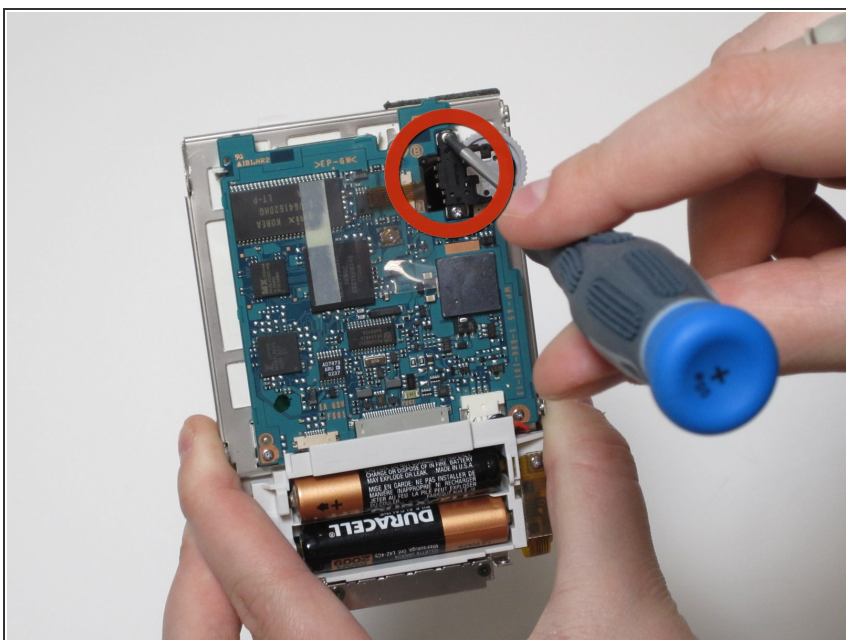
- Turn the Sony Clie face down and open the back case by prying open the left side of the device.
- ⓘ It will open like a book connected by hinges on the right side.

Step 7



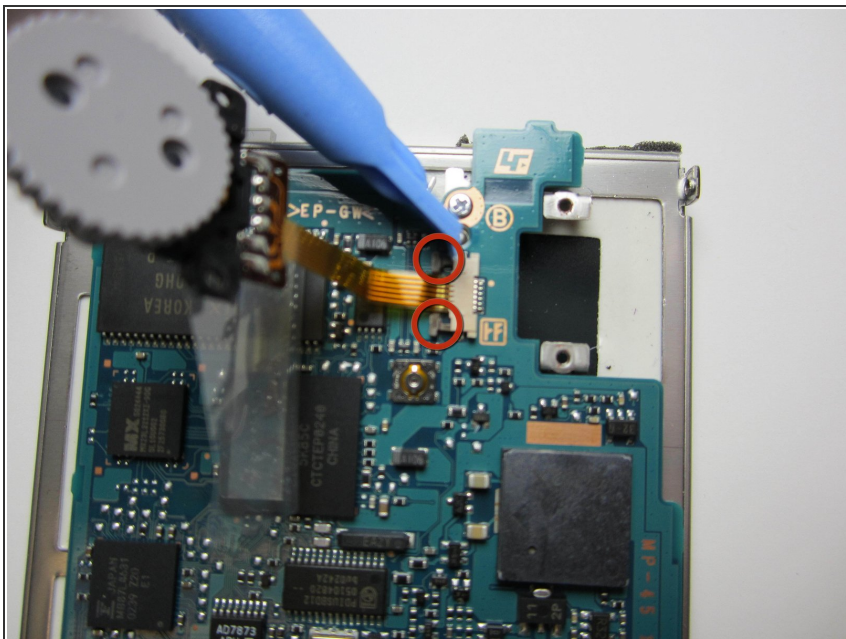
- Gently pry off the right side off the back panel and set it aside, leaving room for the scroll wheel at the upper right corner.

Step 8



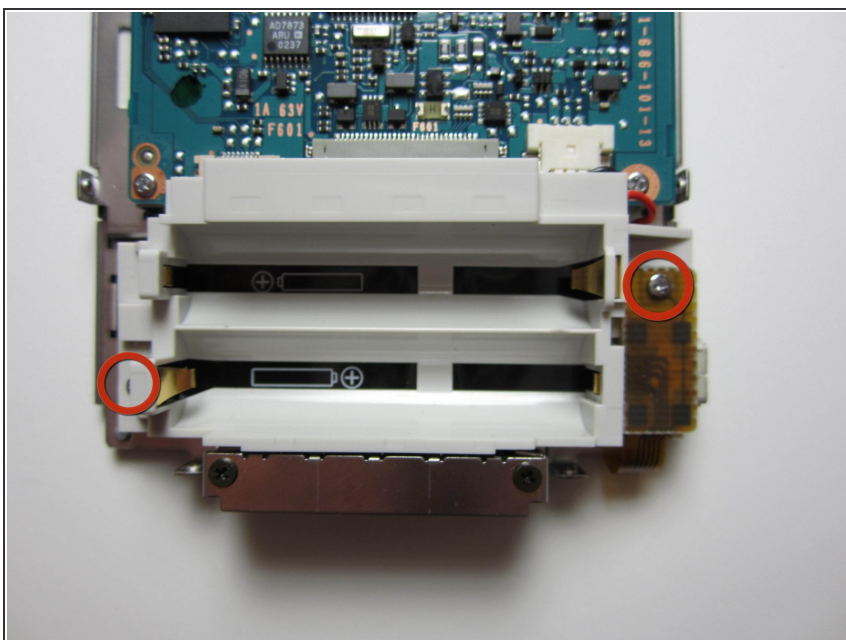
- Using a Phillips #0 screwdriver, remove the two screws holding the scroll wheel in place.

Step 9



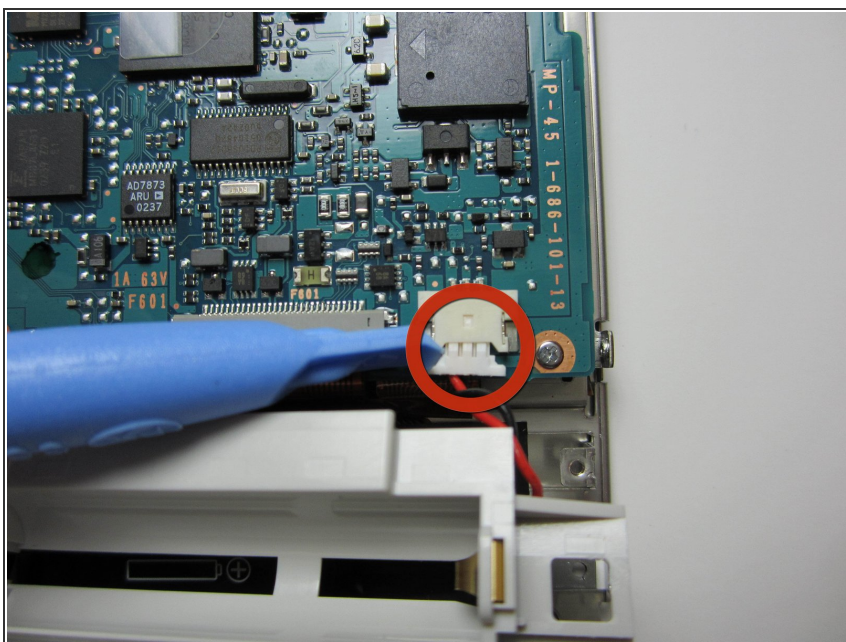
- Pull out both sides of the clip to remove the scroll wheel power cable from the device.

Step 10



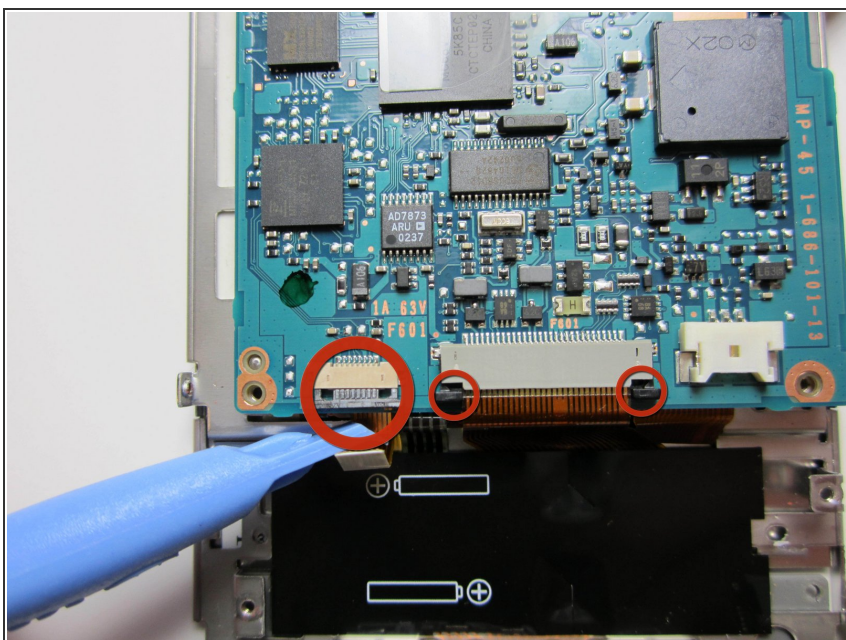
- Using a Phillips #0 screwdriver, unscrew the two screws towards the bottom sides of the Sony Clie to remove the battery harness.

Step 11



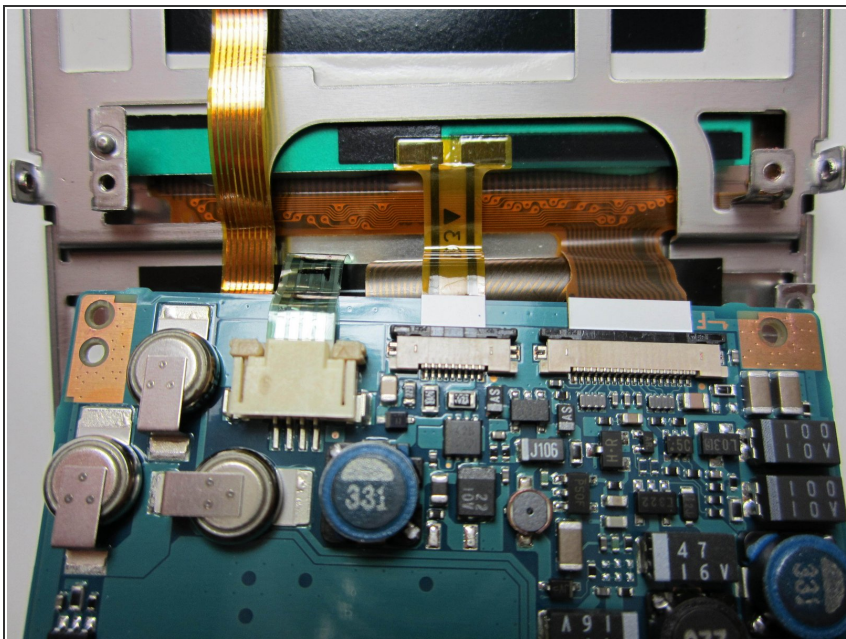
- Pull the power cable from the socket located above the upper right side of the battery harness.

Step 12



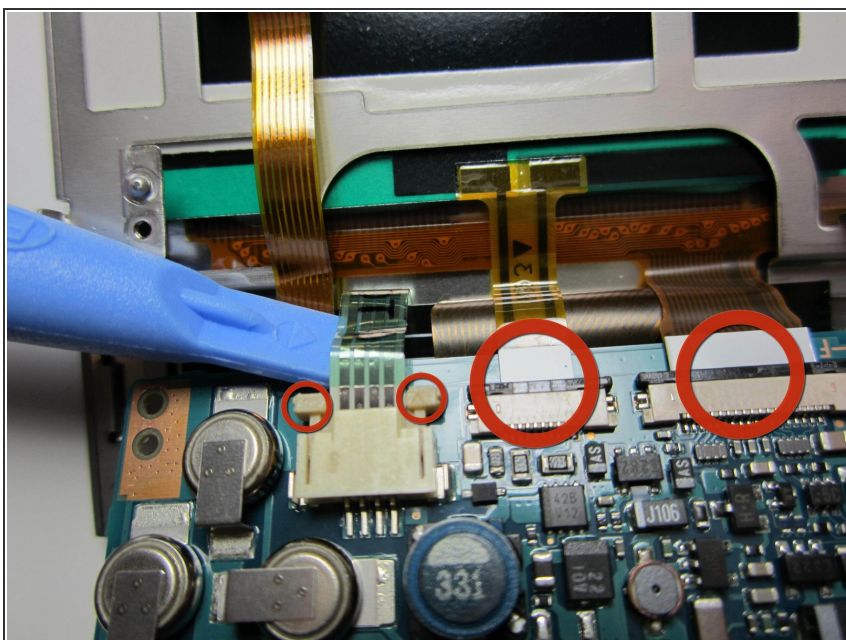
- Gently pull out the clips to remove the bottom power cables from the motherboard after removing the battery harness.

Step 13



- Rotate the motherboard 180 degrees so that it is upside down facing toward you to expose the power cables on the other side.

Step 14



- Gently pull out the clips to remove the top power cables from the motherboard.

To reassemble your device, follow these instructions in reverse order.