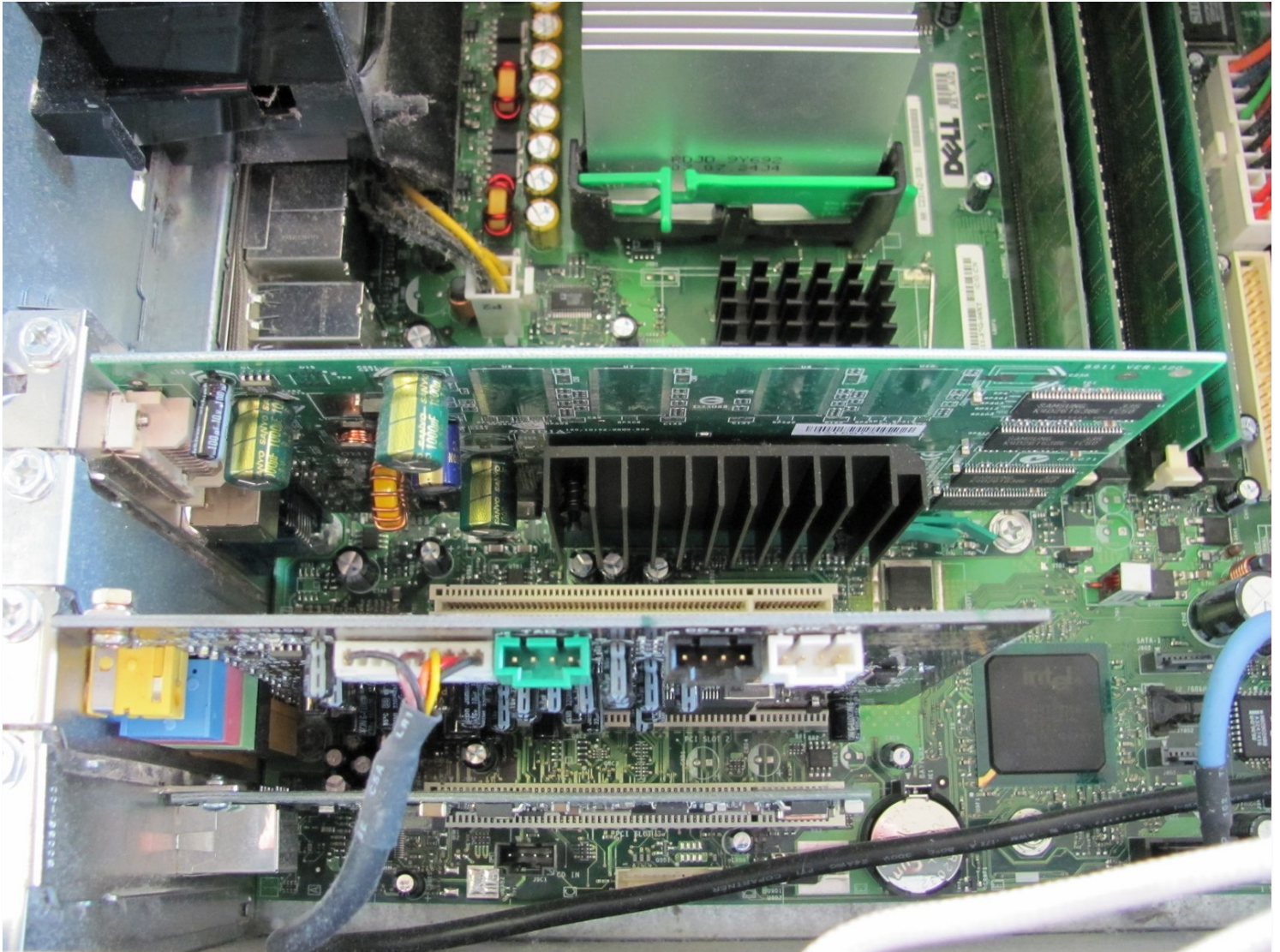




Dell Dimension 4600 Sound Card Replacement

Use this guide to replace the sound card in...

Written By: Arvind



INTRODUCTION

Use this guide to replace the sound card in your computer.

TOOLS:

Phillips #2 Screwdriver (1)

Step 1 — Side Panel



- Locate the case cover latch on the back of the computer.

Step 2



- Using your index finger, slide and hold the cover latch down.
- While holding the latch down, place your other hand flat on the side of the case and firmly shift the side panel to the left until it disengages.

Step 3



- Grab the edge of the panel and slide it away from the case until it is removed.

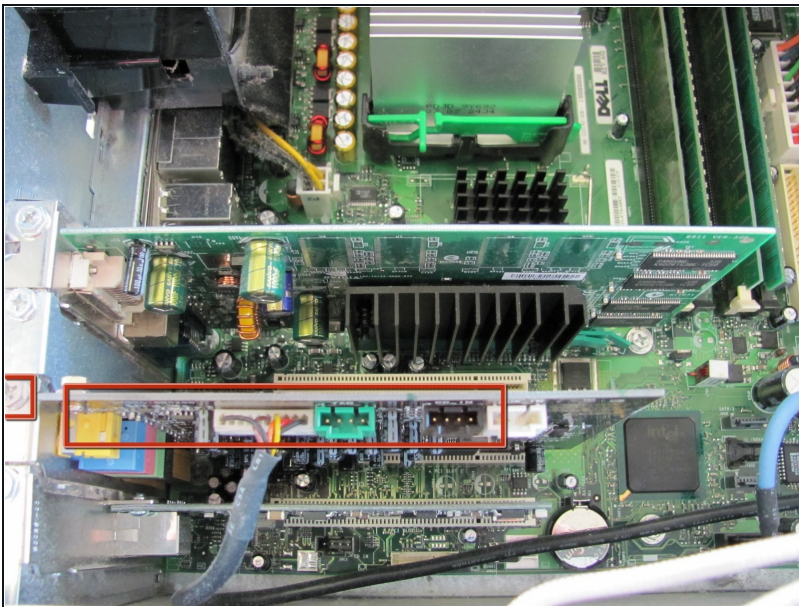
Step 4 — Sound Card



① Lay the computer flat on its side so that you are looking down on all of the components.

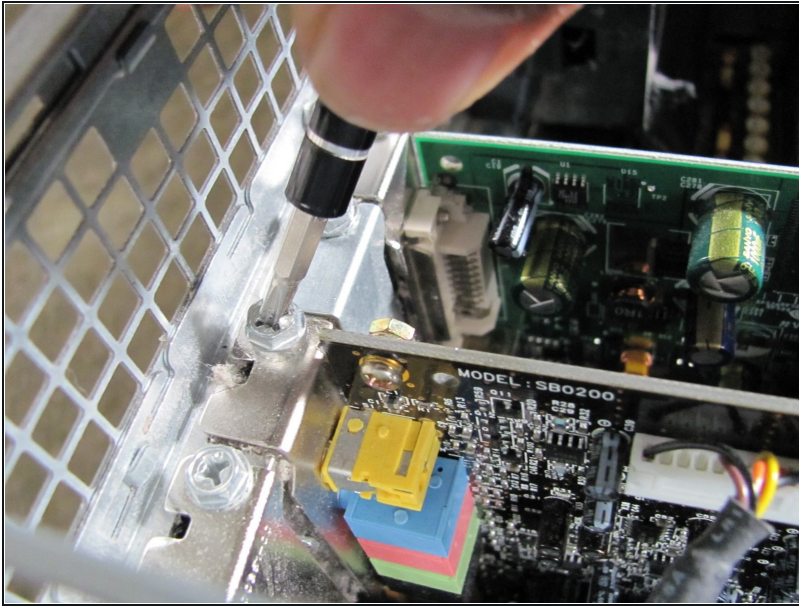
⚠ Very important at this point you connect your [antistatic wrist strap](#) to the chassis because the computer is no longer connected to ground at the power source. There is potential for static discharge which could destroy components.

Step 5



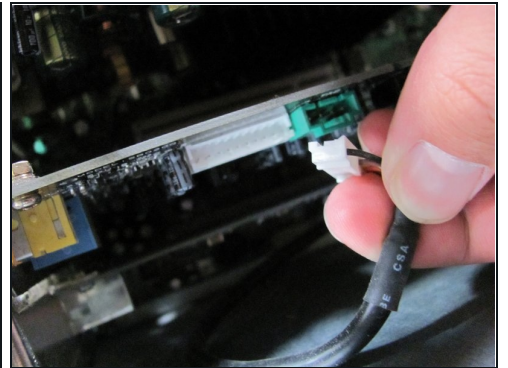
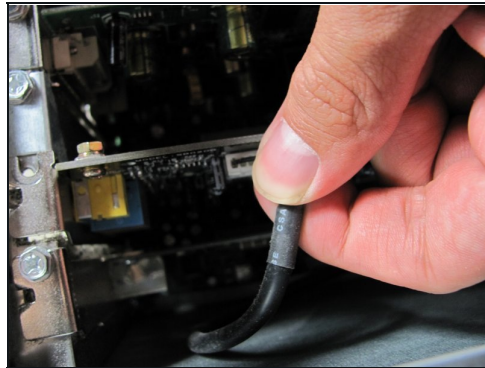
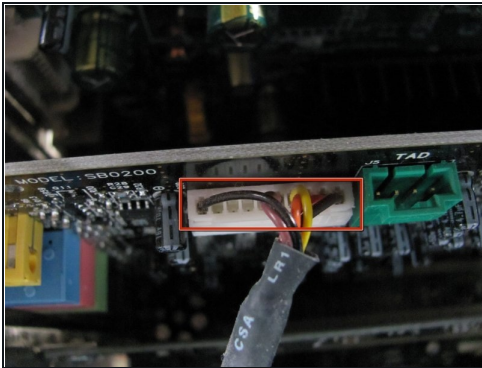
- Locate the Sound Card and the screw attached to the Sound Card as shown in the picture.

Step 6



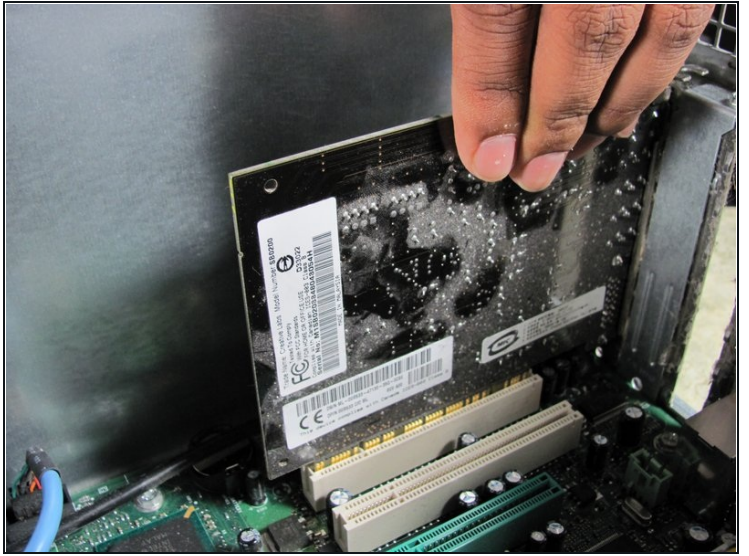
- Remove the 8.9 mm screw by using a Phillips #2 screw-driver.

Step 7



- Locate and remove the white connector on the sound card by pulling on the black cable.

Step 8



- Grasp the Sound Card and pull it up and out of it's slot.

To reassemble your device, follow these instructions in reverse order.