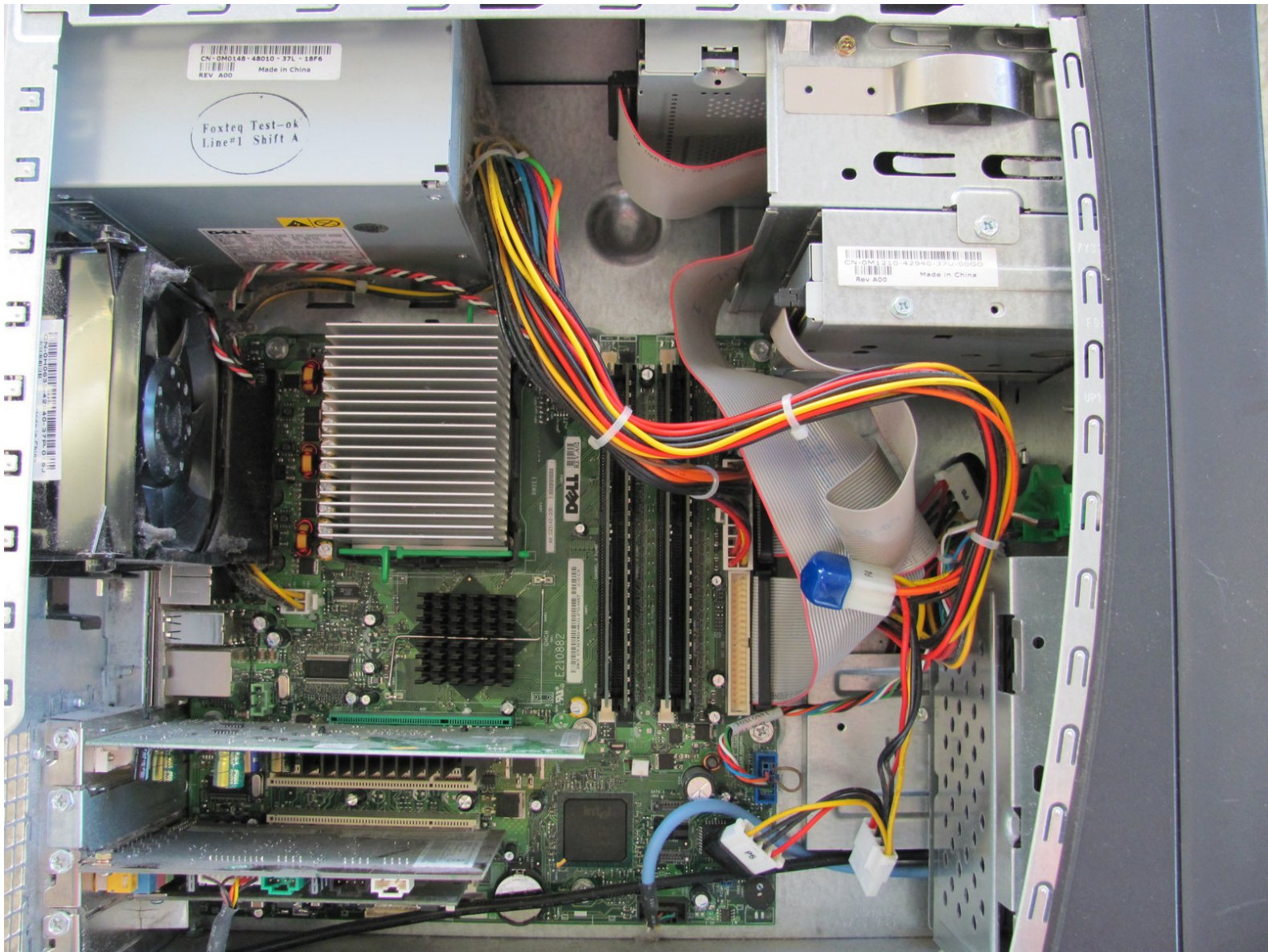




# Dell Dimension 4600 Video Card Replacement

Use this guide to replace the video card in...

Written By: Arvind



---

## INTRODUCTION

Use this guide to replace the video card in your computer.



### TOOLS:

- [Phillips #2 Screwdriver](#) (1)
-



## Step 1 — Side Panel



- Locate the case cover latch on the back of the computer.

## Step 2



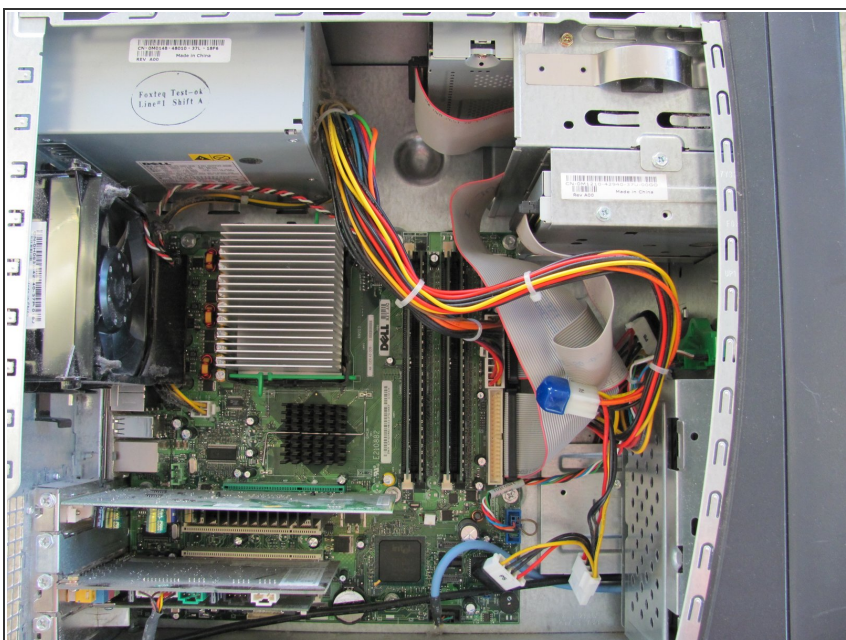
- Using your index finger, slide and hold the cover latch down.
- While holding the latch down, place your other hand flat on the side of the case and firmly shift the side panel to the left until it disengages.

## Step 3



- Grab the edge of the panel and slide it away from the case until it is removed.

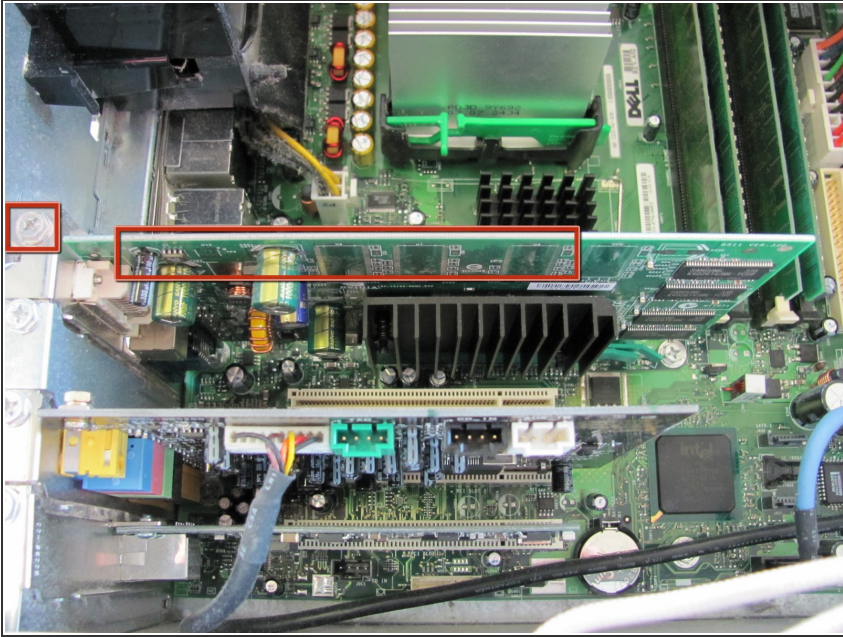
## Step 4 — Video Card



- ① Lay the computer flat so that you are looking down on all of the components.

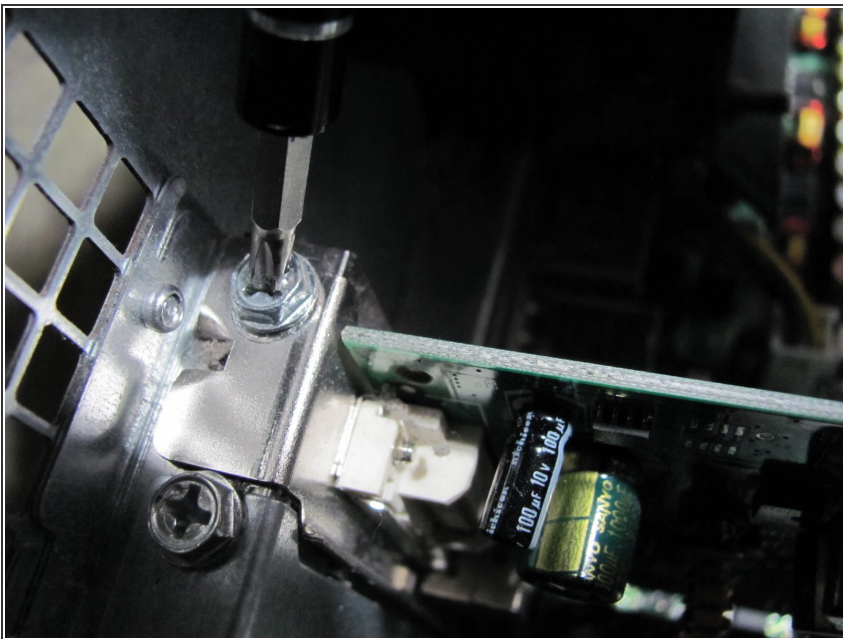


## Step 5



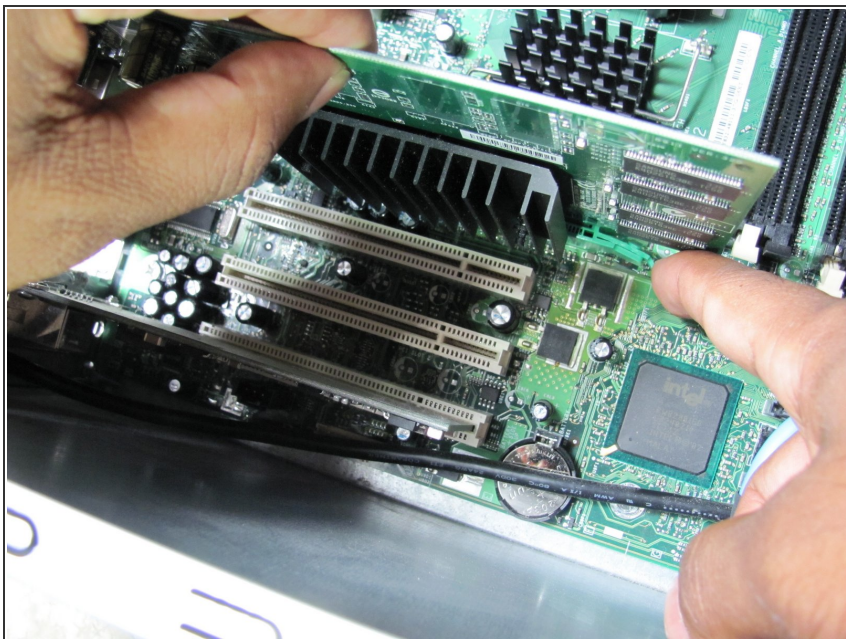
- Locate the Video Card and the screw attached to the Video Card as shown in the picture.

## Step 6



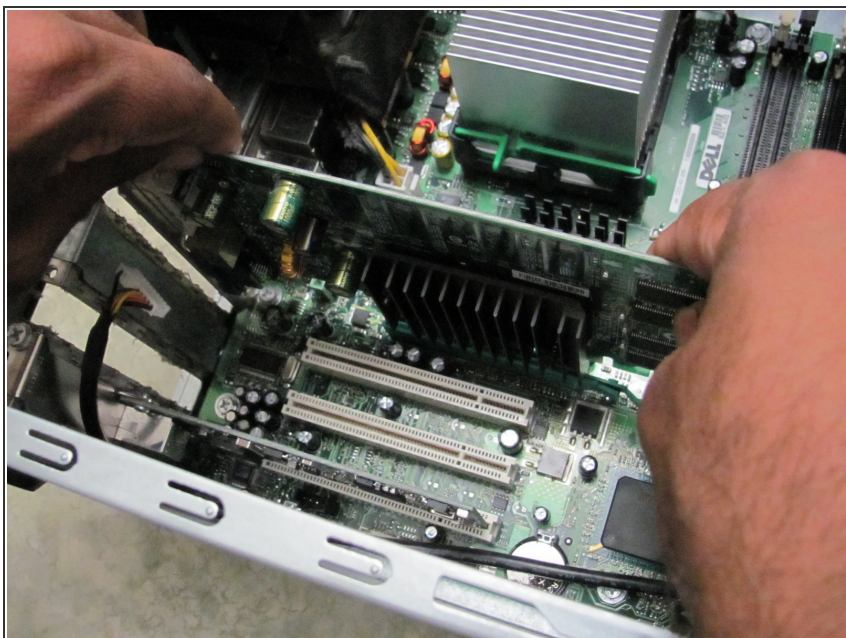
- Remove the 8.9 mm screw by using a Phillips #2 screw-driver.

## Step 7



- Push down on the green clip located by the bottom right corner of the video card while simultaneously pulling the card up with your other hand.

## Step 8



- Pull the remainder of the card up and out of it's slot.

To reassemble your device, follow these instructions in reverse order.