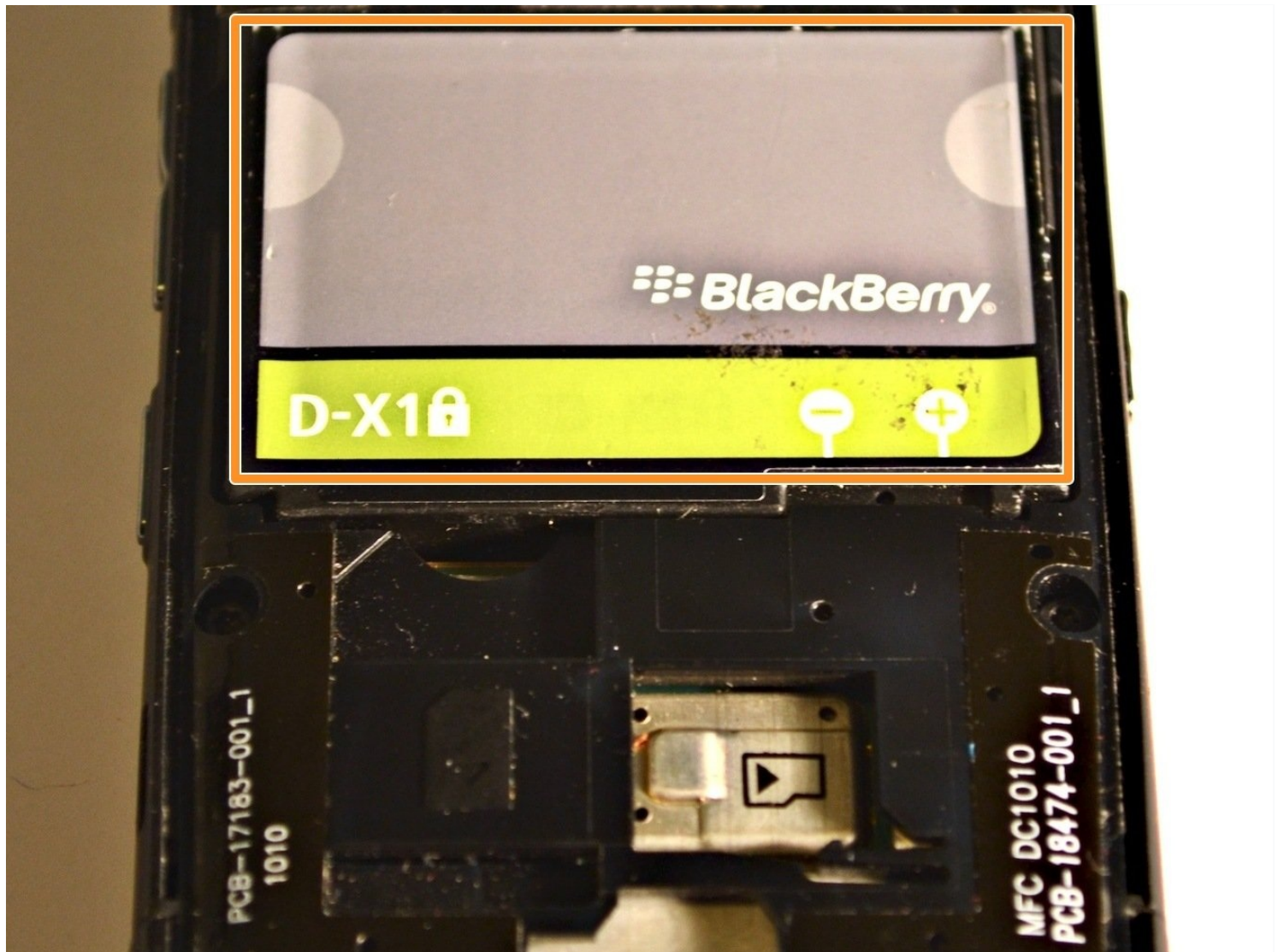




BlackBerry Curve 8900 Battery Replacement

Few tools are required to do this. A small...

Written By: Renae Bishop



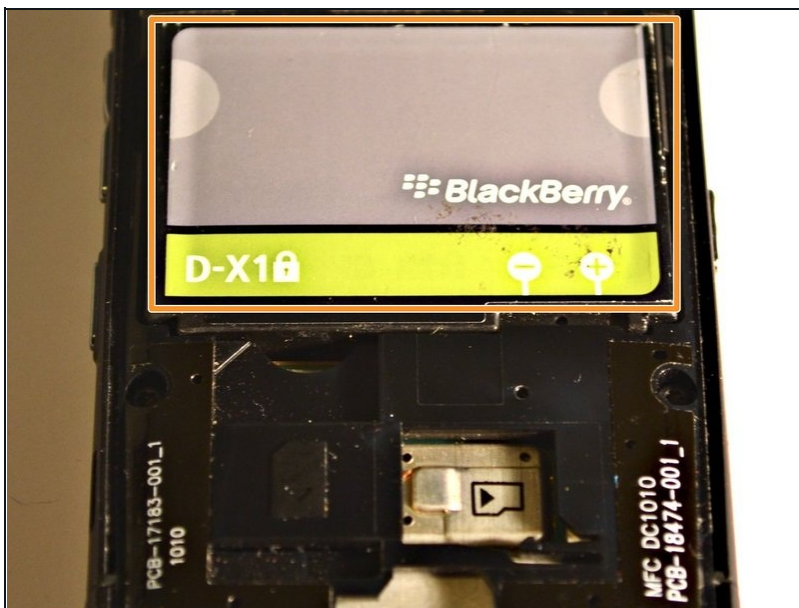
INTRODUCTION

Few tools are required to do this.

A small plastic pry tool or even a fingernail is sufficient. Working area surface should be clean and dry with adequate lighting.

Immediately wash hands after handling the battery and completing the process. Discard the dead battery properly.

Step 1 — Battery



- Remove the back cover of the phone.
- The battery will now be visible.

Step 2



- Pinch the battery at the grey semi-circles on the top left and top right corners of the battery using your fingers and remove it from the device.

Set aside the old battery, then replace it with the new battery. It should easily fit into place. Then, you can replace the backing of phone, pressing gently to secure it down.