



Toshiba Satellite L675D-S7016 Screen Replacement

This complicated guide will walk you through the many steps in removing the screen. Keep track of screws removed.

Written By: Austin Bons



INTRODUCTION

If you determined that the LCD screen is unresponsive, or "black," this guide will show you how to access and remove the screen.



TOOLS:

- [Phillips #1 Screwdriver](#) (1)
 - [Heavy-Duty Spudger](#) (1)
 - [Metal Spudger](#) (1)
 - [Tweezers](#) (1)
 - [iFixit Opening Tools](#) (1)
-

Step 1 — Battery



- Power down the computer and unplug the power adapter.

Step 2




- Flip the laptop upside down. Locate the two latches on both sides of the battery.

Step 3



- Slide the latch on the right outwards, releasing the lock. The latch stays unlocked once moved.
- Simultaneously slide the latch on the left outwards while pulling the battery towards you.

 Do not touch the metal connectors on the laptop and the battery.

Step 4 — Back Panel Removal



- Remove the single captive screw on the back panel with your Phillips #1 screwdriver.

Step 5



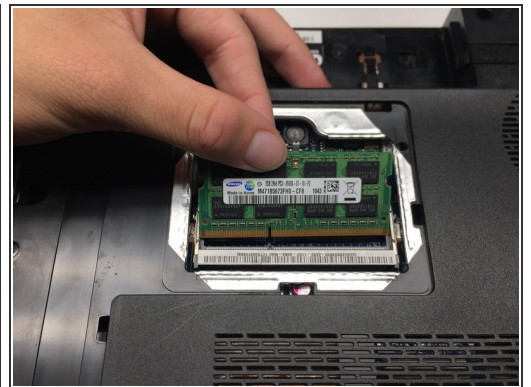
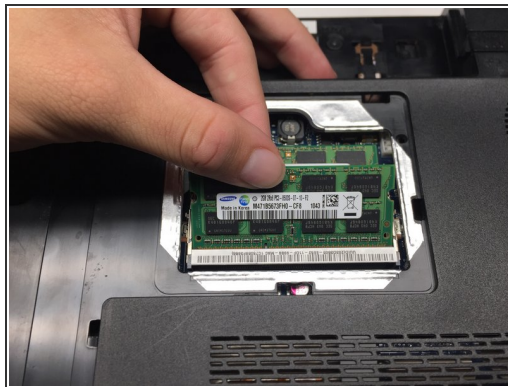
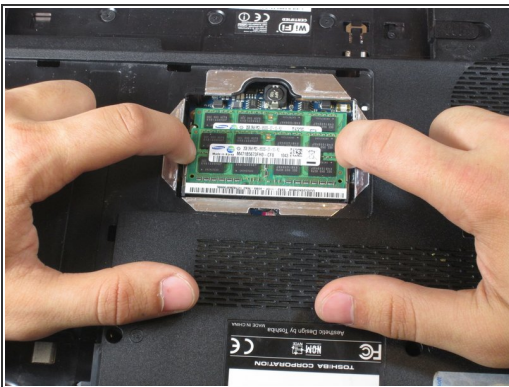
- Pry the removal tab up. You will feel and hear the first clip release, popping up slightly.
- Work your way around the border of the panel, releasing the rest of the clips.
- Once all clips are released, lift the cover up and pull towards you.

Step 6 — Hard Drive



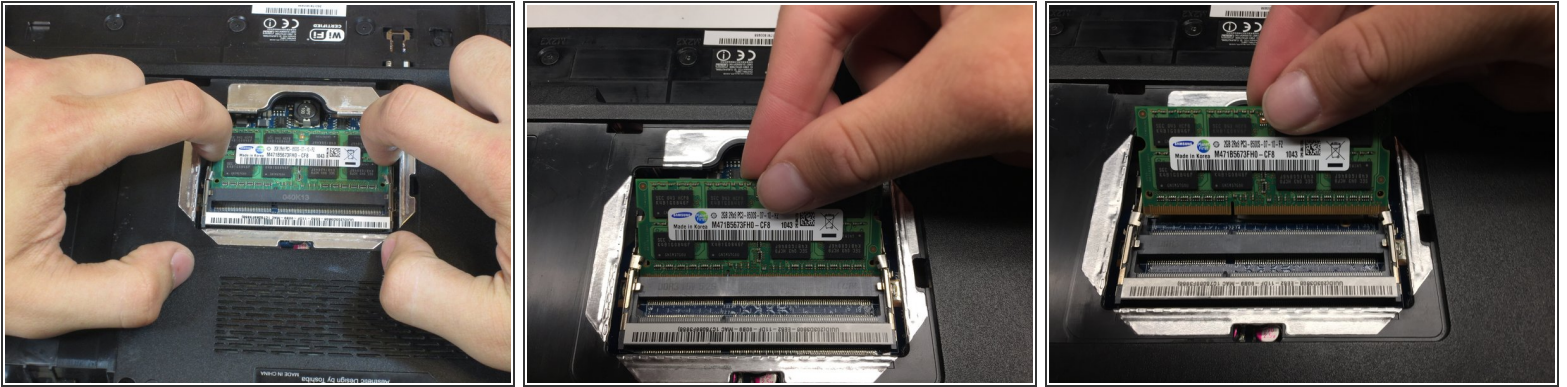
- Slide the hard drive to the left, using the silver tab.
 - Pull up the silver tab, removing the hard drive from the slot.
- ⚠ Do not touch the metal data pins on the hard drive or computer.

Step 7 — RAM



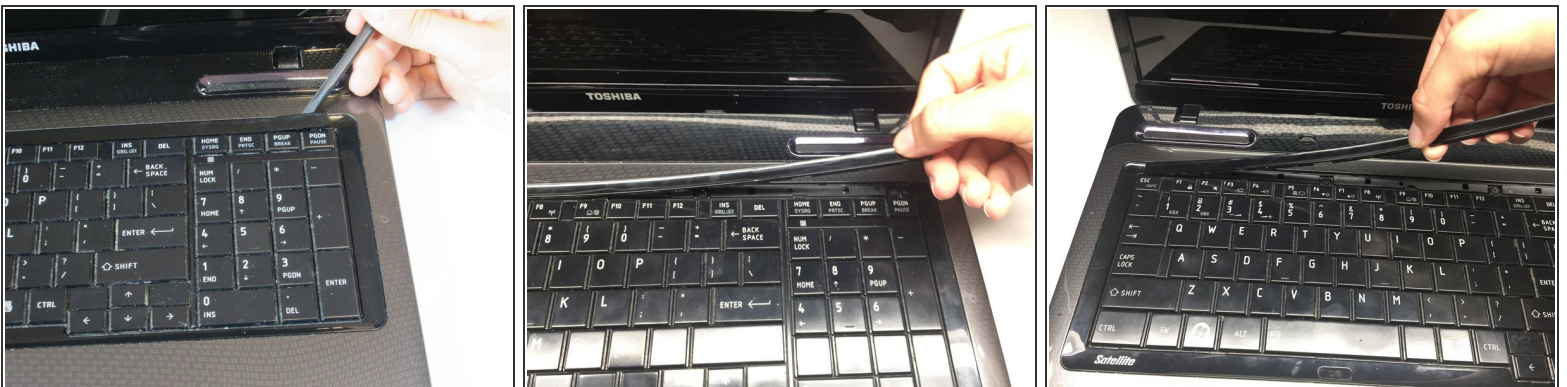
- Using your fingers, spread the spring tabs holding the top stick of RAM in place.
- Once the tabs are spread apart, the stick of RAM will pop up.
- Remove the first stick of RAM by pulling out along the same angle the RAM stick springs up.

Step 8



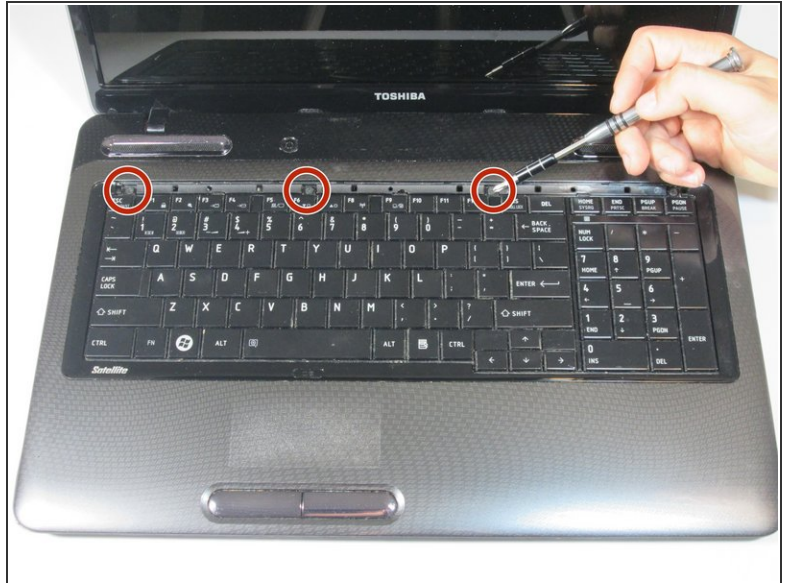
- Repeat the same procedure to remove the second stick of RAM.

Step 9 — Keyboard



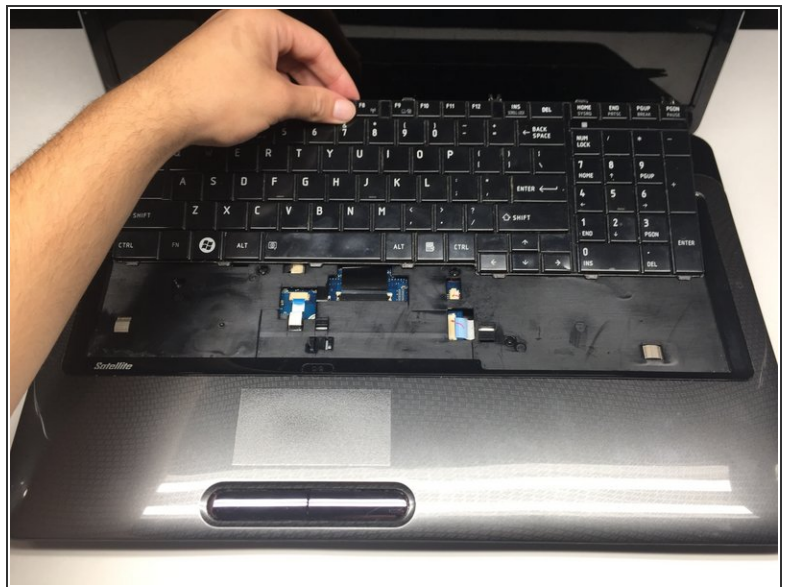
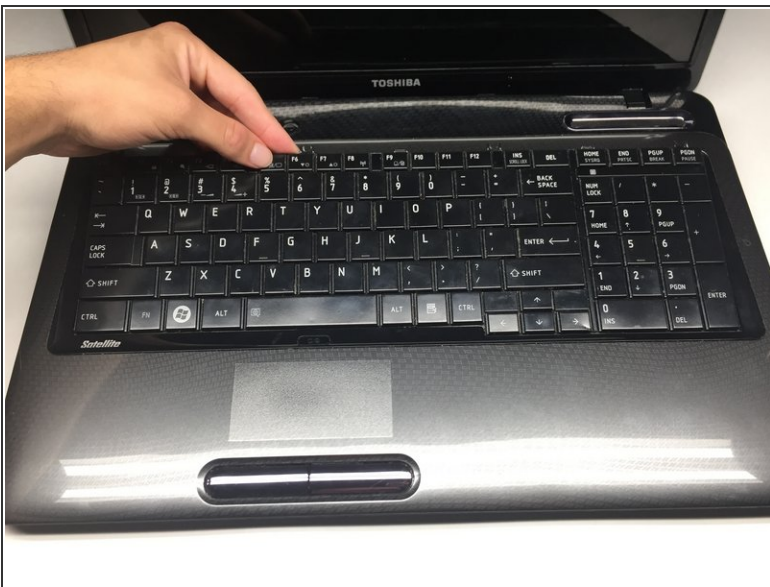
- Pry under the plastic strip, starting on the top right side of the key board with a Heavy Duty Spudger.
- Once the first corner is raised, use your hand pulling upwards and release the rest of the strip.

Step 10



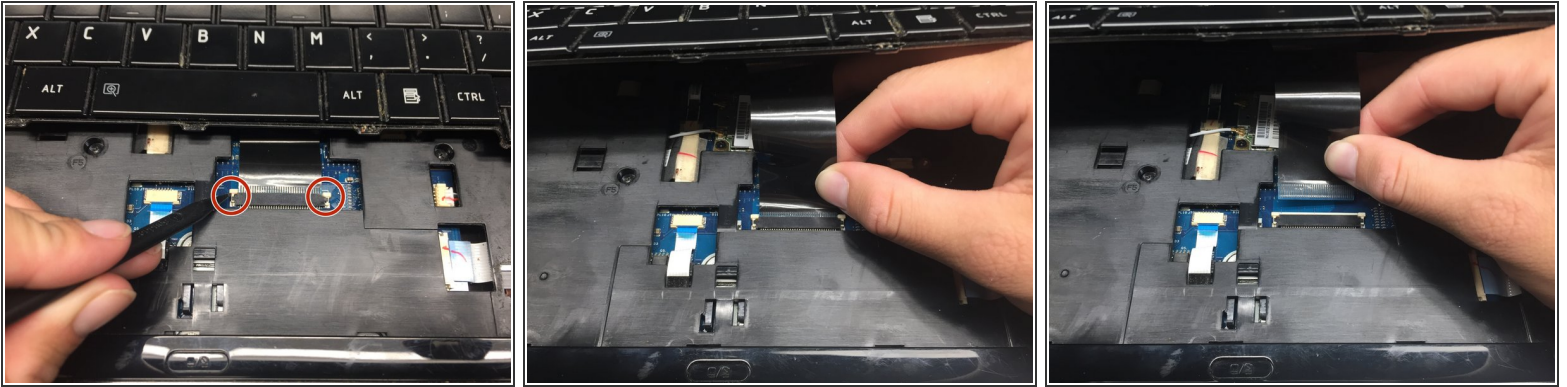
- Remove the first 3mm screw with the Phillips #1 screwdriver.
- Remove the next three 3mm screws.

Step 11



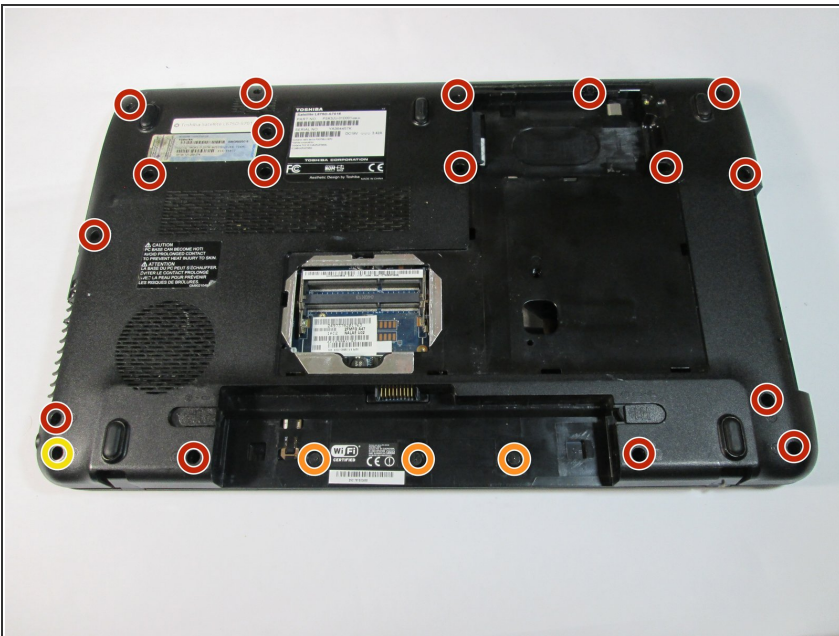
⚠ Lift the keyboard gently . Slide it forward towards the screen and speakers. This reveals the connection needed for the next step.

Step 12



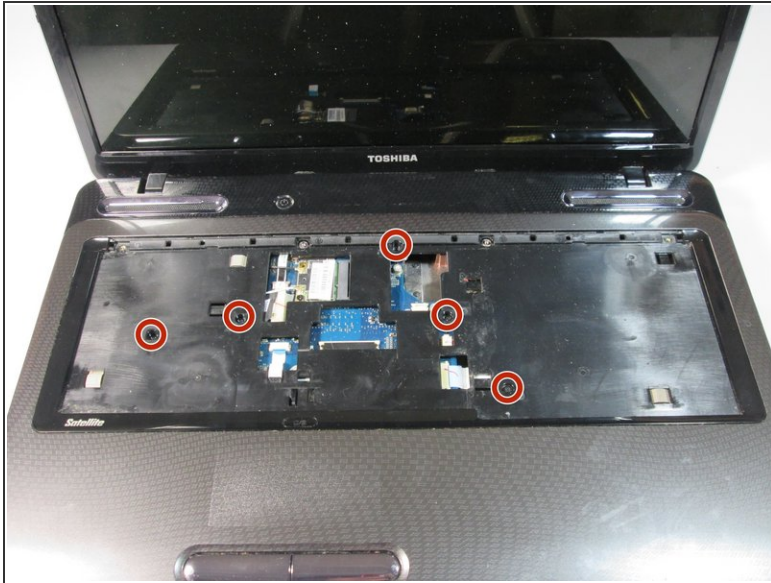
- Use the pointed end of the Heavy-Duty Spudger and push the pins toward the screen, leaving them in this position.
- Carefully slide the connector out of the port.

Step 13 — Top Case Housing



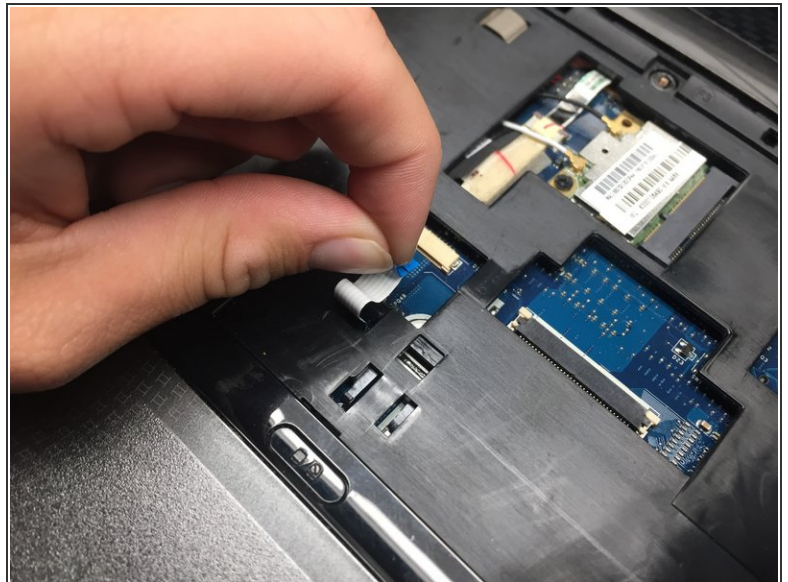
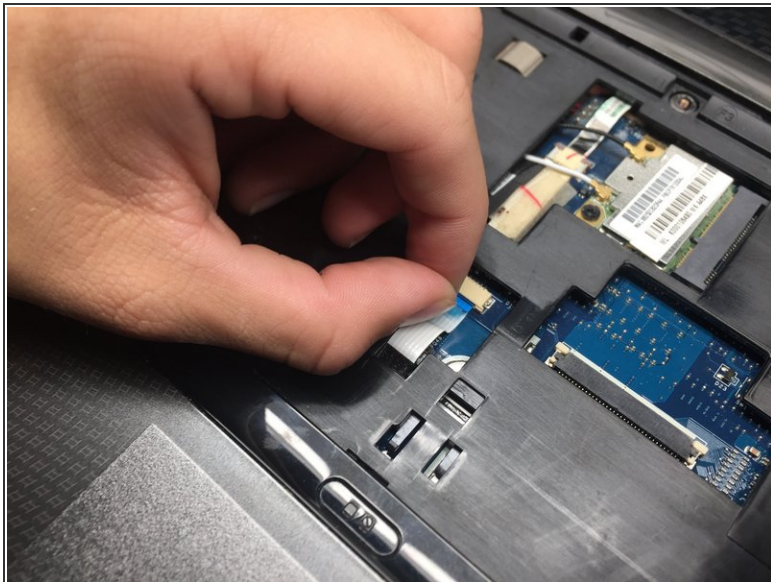
- Remove the following screws with a Phillips #1 screwdriver.
 - Seventeen 5mm screws (recessed)
 - Three 2mm screws in the battery bay (flush-mounted)
 - Single 5mm screw does not need removal unless working on the screen

Step 14



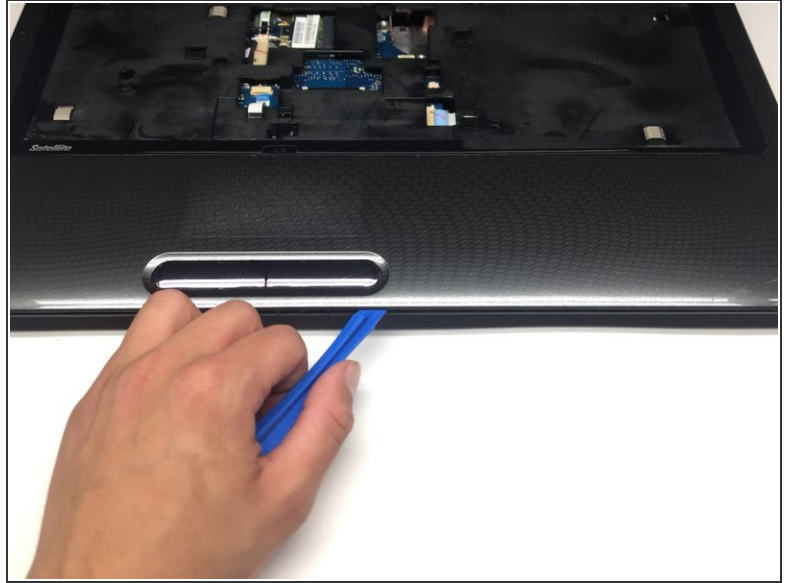
- Remove five 5mm screws with the screwdriver.

Step 15



- Locate the trackpad connector.
- Pull the ribbon from the connector.

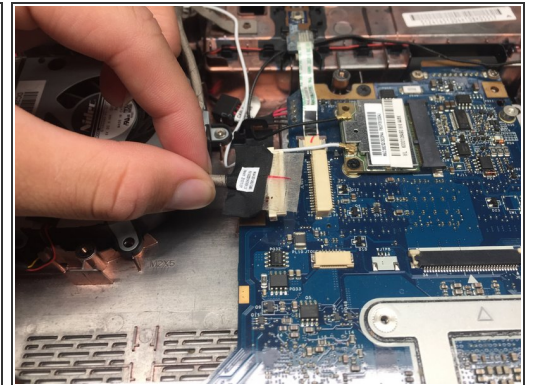
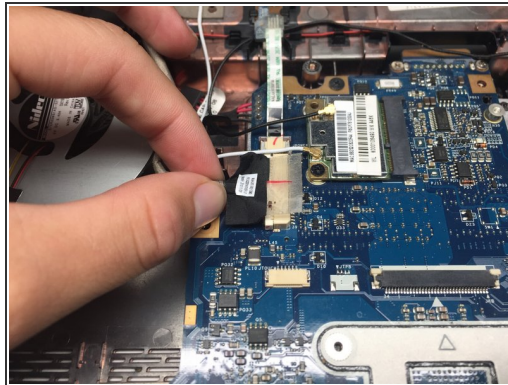
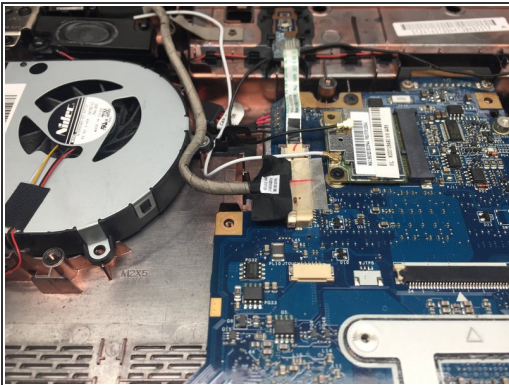
Step 16



- Pry under the top case housing along the perimeter with a plastic opening tool.

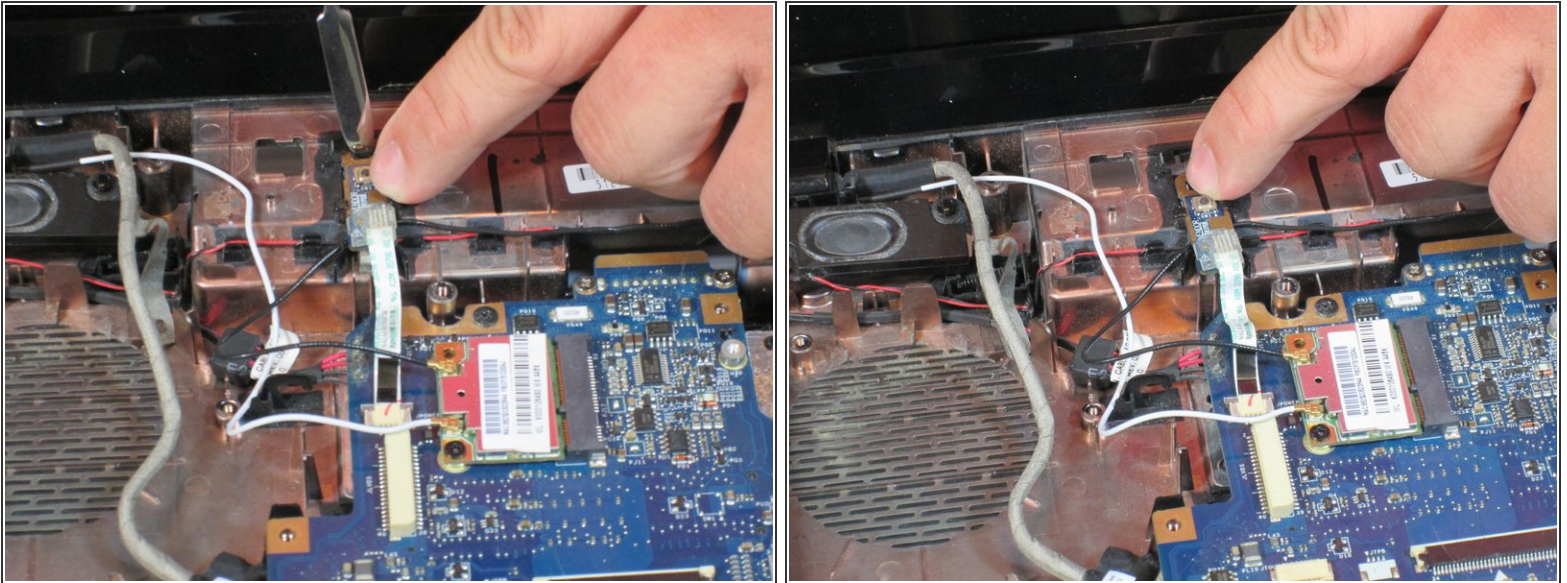
⚠ Be careful and gentle with this step, the clips you are releasing here are plastic and can be broken by violent prying.

Step 17 — Screen



- Remove the screen input wire from the port.

Step 18



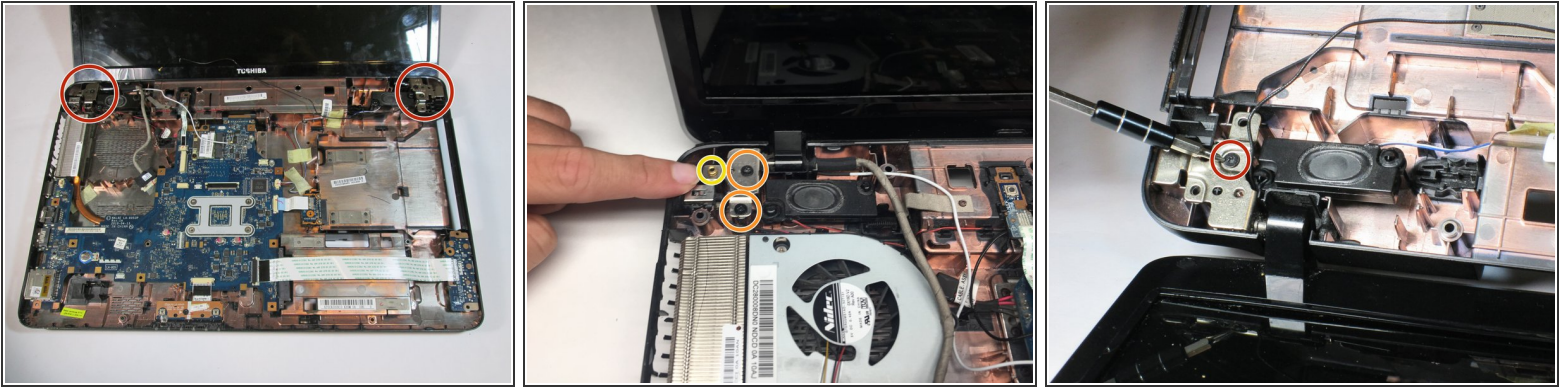
- Slide the metal power button connector out of its port, allowing the black wire to be moved from under it.

Step 19



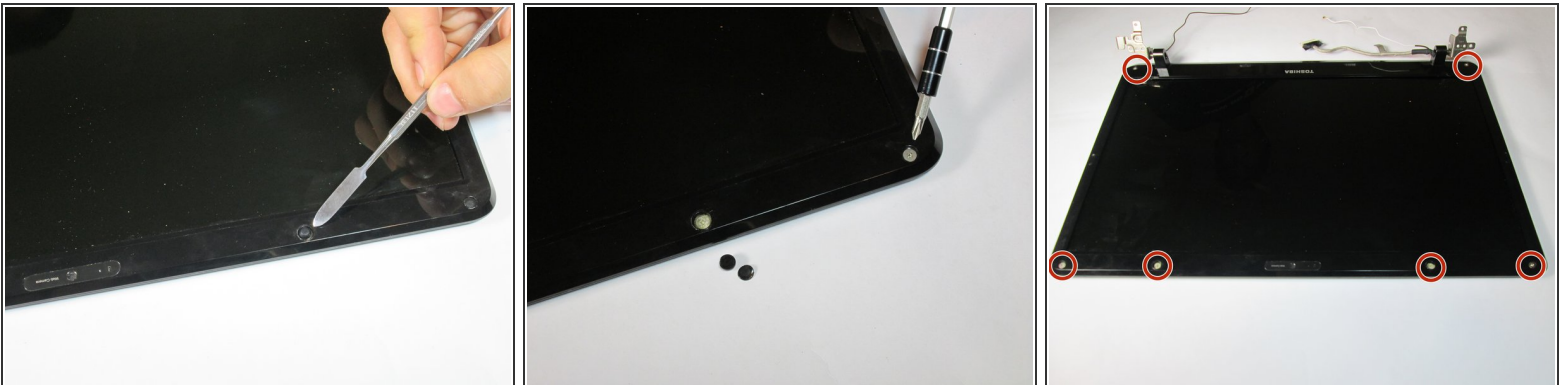
- Lift the black connector with tweezers and repeat the same action for the white connector.

Step 20



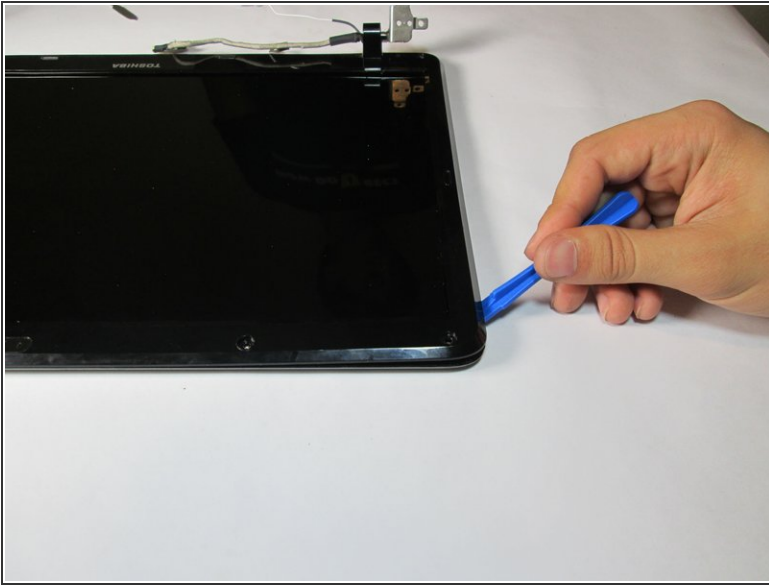
- The screen is attached with two hinges on both sides of the laptop.
- Remove the three 5mm screws (two on the left hinge, one on the right hinge) using a screwdriver.
- Remove brass fitting held in place by removing the 5mm screw circled in yellow in step 15.

Step 21



- Remove the 6 rubber tabs on the housing using a metal Spudger.
- Remove the six 6mm screws holding the housing.

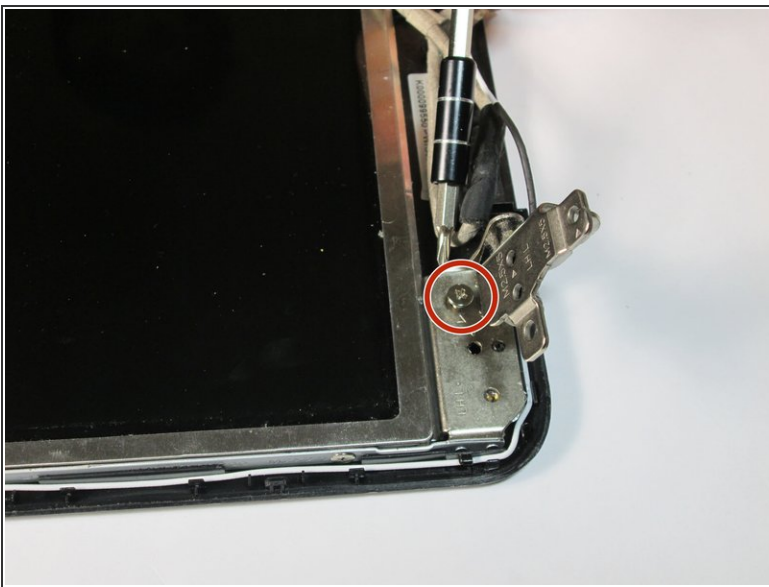
Step 22



- Use the plastic opening tool to pry the screen housing.

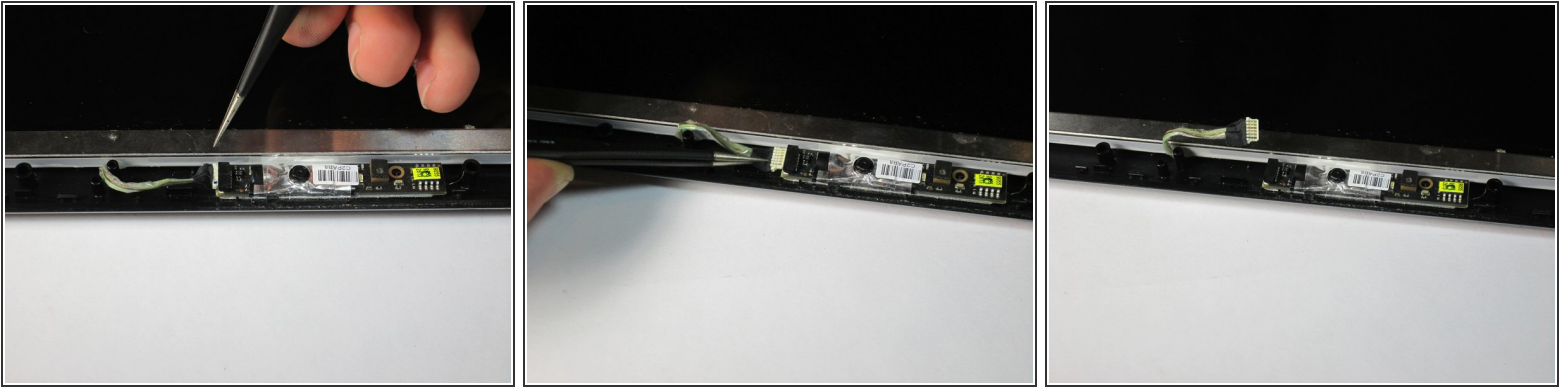
⚠ Only pry from the outside edges! Prying from the inside edges will likely damage the LCD panel.

Step 23



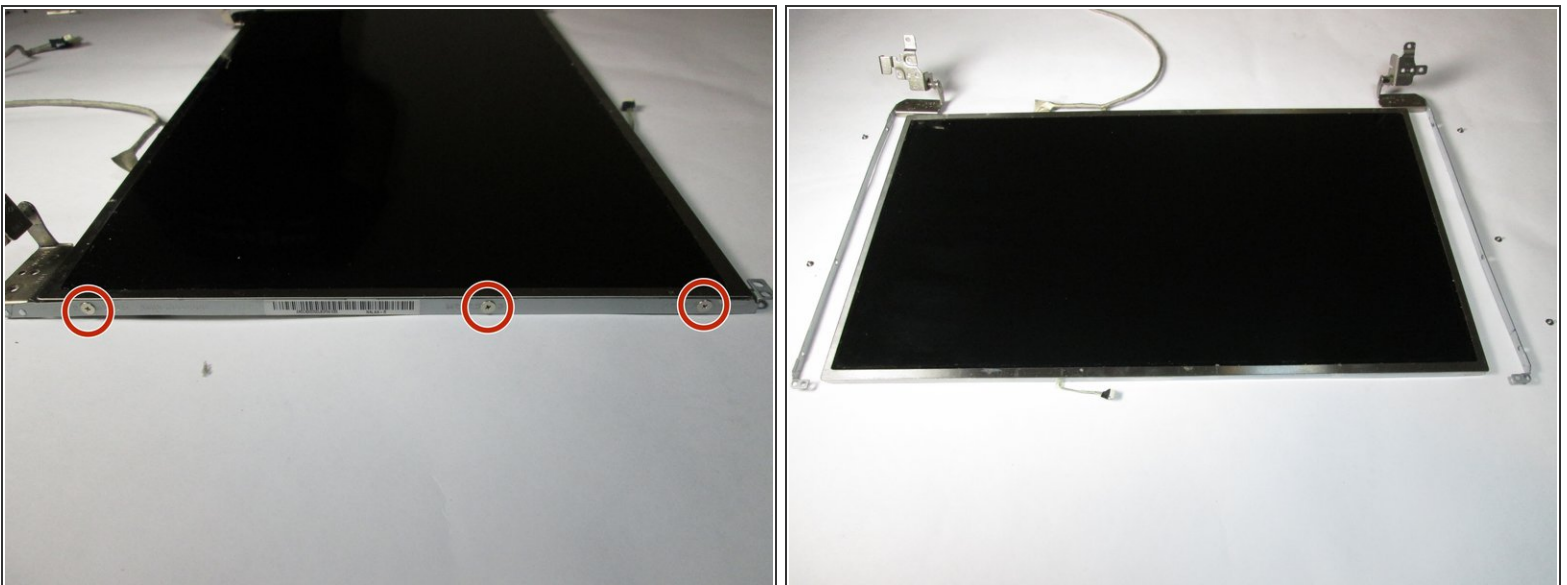
- Remove two 5mm screws using a screwdriver. There is one screw at each hinge.
- Remove white wire from the perimeter of the plastic housing.

Step 24



- Disconnect the webcam data wire using tweezers.

Step 25



- Remove the three 2.5mm screws on each side of the screen casing with a screwdriver.
- The two metal casings can now be removed.

To reassemble your device, follow these instructions in reverse order.