



# Toshiba Satellite L675D-S7016 Disk Drive Replacement

Removing the disk drive from the computer, as well as opening the disk drive if it is stuck with a disk inside of it and will not open.

Written By: Austin Bons



---

## INTRODUCTION

If you have determined that your Disk Drive is faulty, this guide will walk you through the removal steps. This piece of the laptop is easily removed and reinstalled. An easy fix for novices.

---



### TOOLS:

- [Phillips #1 Screwdriver](#) (1)
-

## Step 1 — Back Panel Removal



- Remove the single captive screw on the back panel with your Phillips #1 screwdriver.

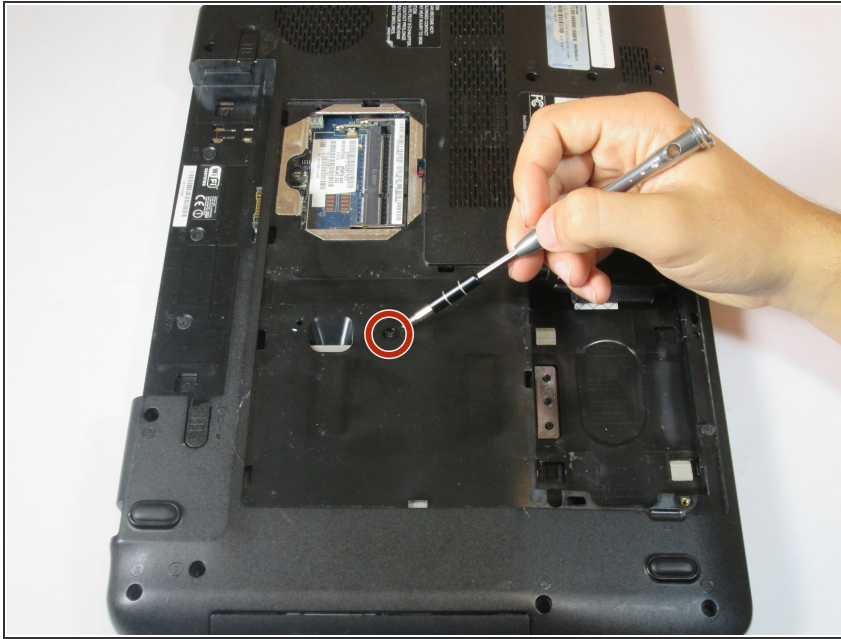
## Step 2



- Pry the removal tab up. You will feel and hear the first clip release, popping up slightly.
- Work your way around the border of the panel, releasing the rest of the clips.
- Once all clips are released, lift the cover up and pull towards you.

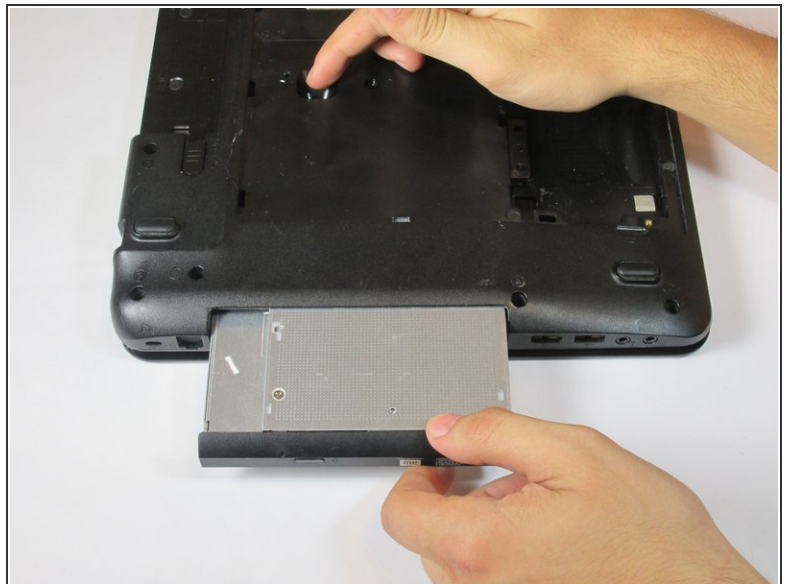


### Step 3 — Disk Drive



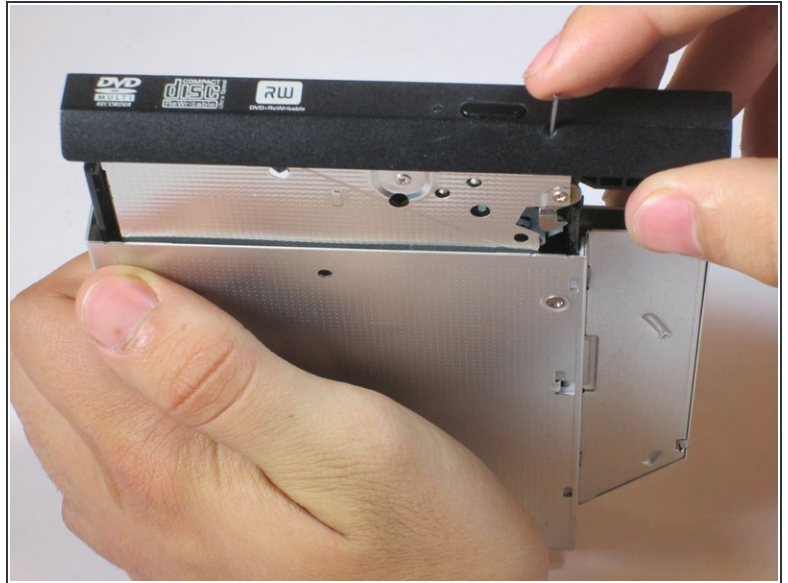
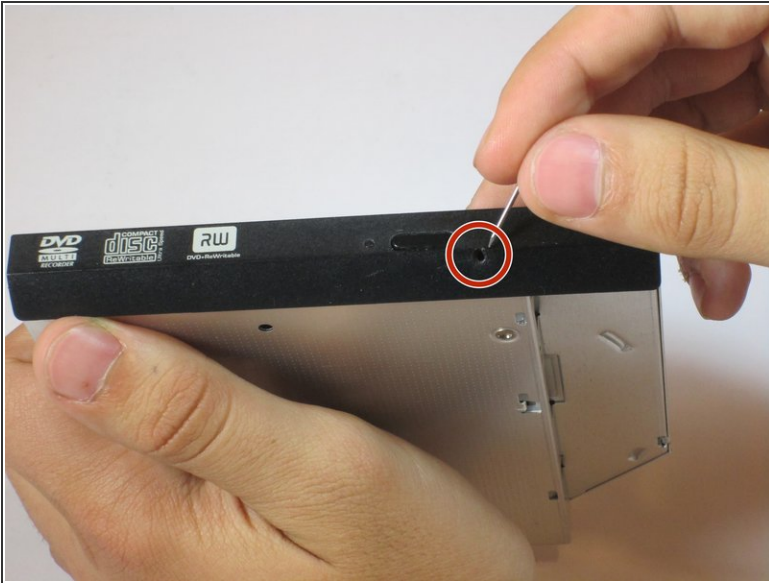
- Remove the single 5mm Phillips #1 screw using the screwdriver.

### Step 4



- Push the exposed portion of the Disk Drive outwards.
- The Disk Drive will begin sliding out of its slot. Remove Disk Drive from the laptop by hand.

## Step 5



- i** This step is only necessary if there is a disc stuck inside the drive! If you are replacing the drive and do not need to remove a disc, this can be skipped.
- On the front of the Disk Drive, below the eject button, insert a pin or paperclip into the hole.
  - Push the pin into hole until the Disk Drive pops out.

To reassemble your device, follow these instructions in reverse order.