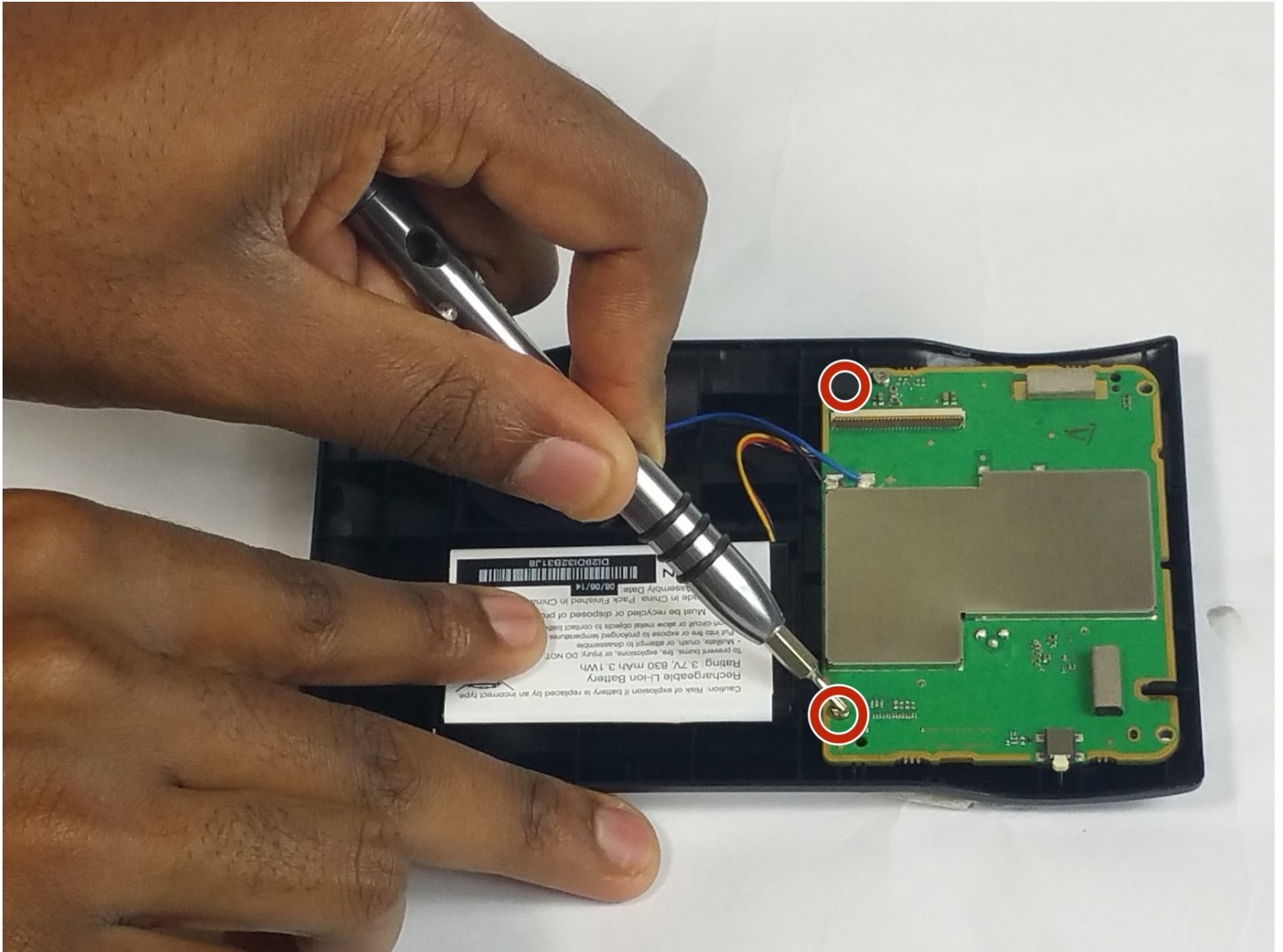




Garmin Nuvi 2455LMT Mother Board Replacement

The mother board assembly is simple to replace...

Written By: Nathaniel Williams



INTRODUCTION

The mother board assembly is simple to replace and only takes 10-15 minutes to open the device and access the logic board. This guide requires a prying tool, the Torx 4 screwdriver, and the soldering kit.

TOOLS:

[iFixit Opening Tool](#) (1)

[T4 Torx Screwdriver](#) (1)

[Tweezers](#) (1)

Step 1 — Back Panel Assembly



- Remove the four 2.5mm screws from the back assembly with a Torx #04 Screwdriver.
- Holding the GPS with a free hand while unscrewing the small screws will help stabilize the device.

Step 2



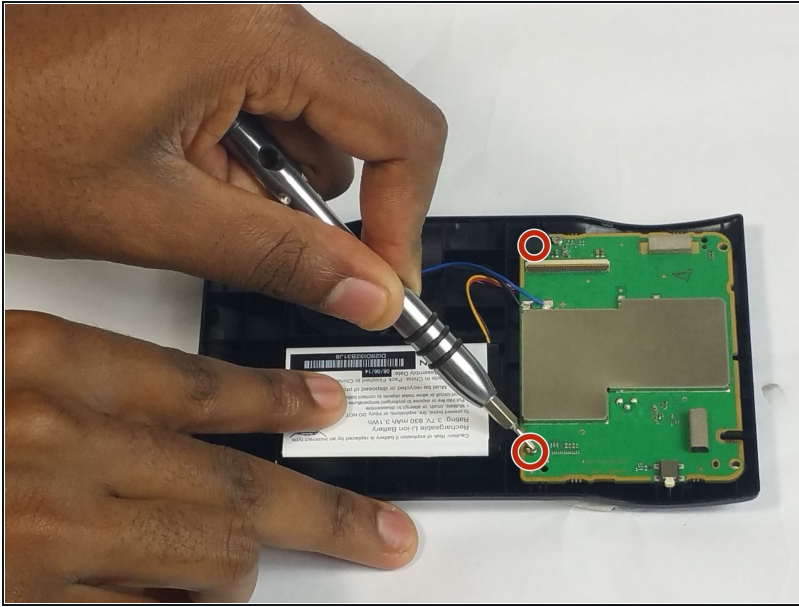
- Use the plastic opening tool on all four sides of the device to open the Garmin Nuvi LMT2455 Back Panel.
- To properly remove the back cover assembly pry open both the back and sides of the assembly.

Step 3



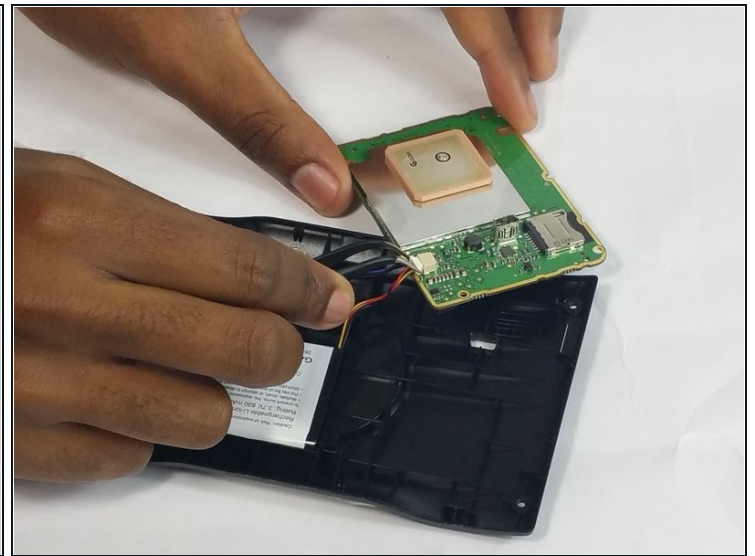
- Open the device carefully being wary of the orange band that is going from the screen to the motherboard.
- Remove the orange band by carefully lifting the lip that connects it to the motherboard.

Step 4 — Mother Board



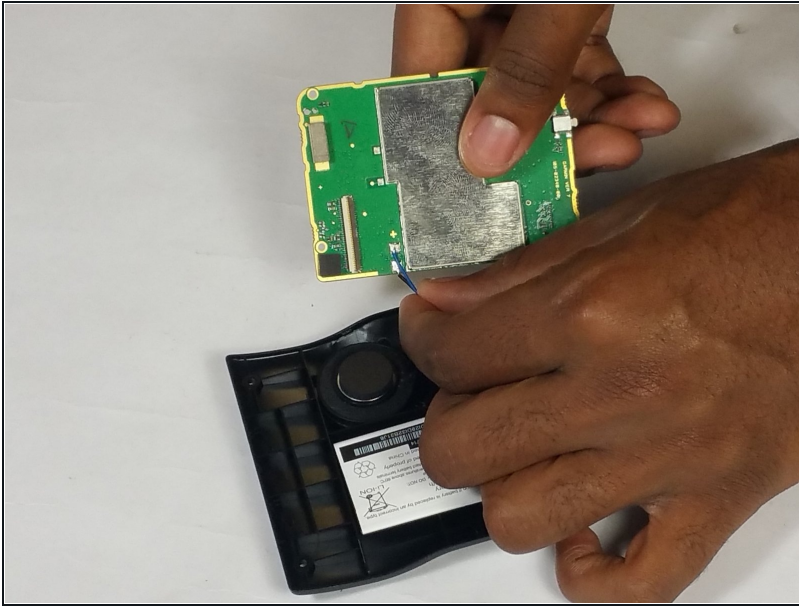
- Remove the two 1.0mm 04# Torx screws from the mother board assembly
- One screw can be found directly to the right of the battery and one screw can be found behind the orange band.
- Hold the GPS with a free hand to ensure stability.

Step 5



- Place the screen portion of the GPS face down.
- Remove the mother board from the plastic back panel.
- Disconnect the battery with [tweezers](#) by gripping the white socket displayed in the photo. Wiggle the white socket out of the mother board.

Step 6



- Use a soldering tool to de-solder the connection to the motherboard. Refer to the [iFixit Soldering guide](#) to see how

To reassemble your device, follow these instructions in reverse order.