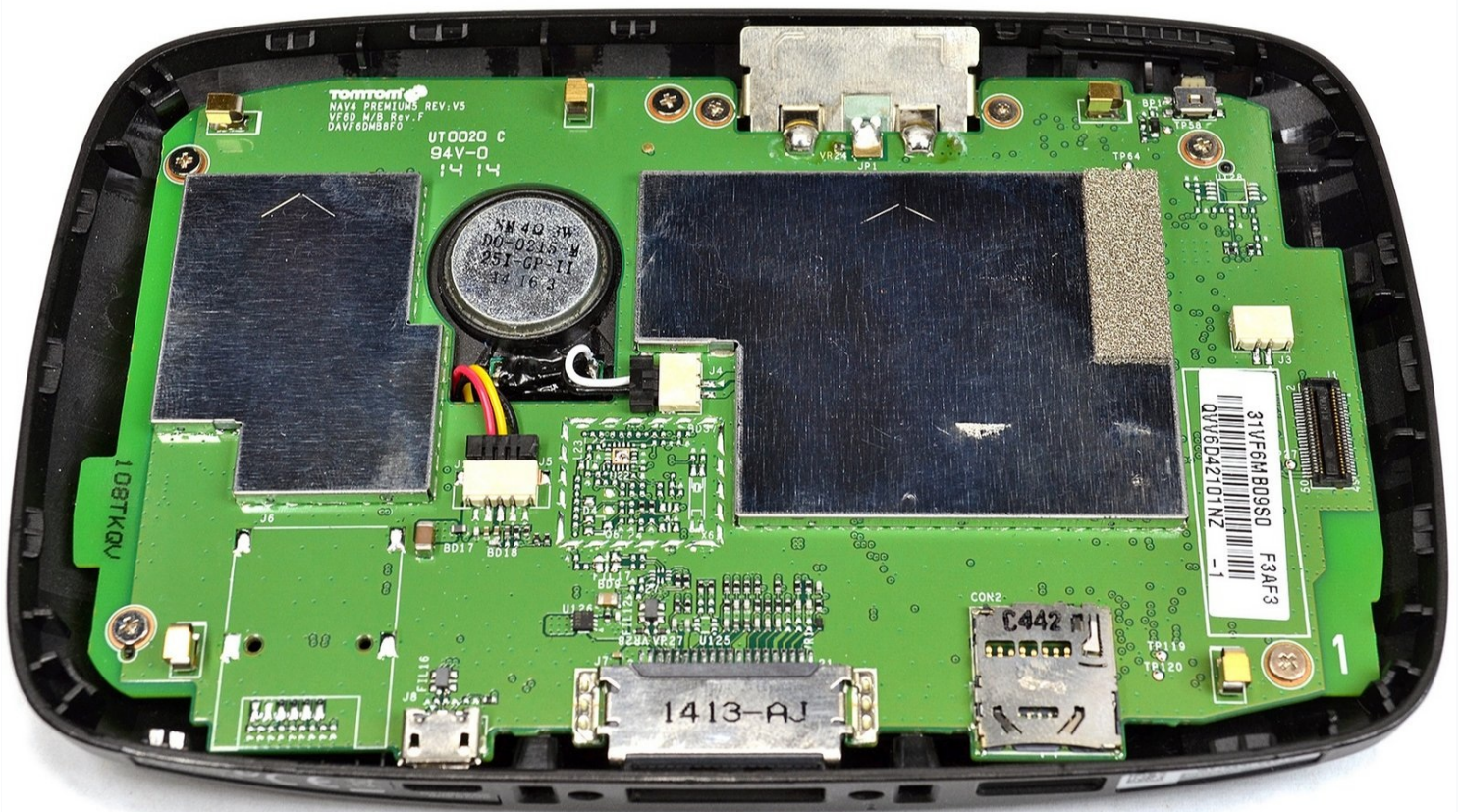




TomTom GO 500 Motherboard Replacement

The motherboard contains all of the device's...

Written By: jkl



INTRODUCTION

The motherboard contains all of the device's ports while the speaker, battery, and microphone are separate from the motherboard. Confirm the device is powered off before starting the disassembly.

TOOLS:

Precision Tweezers Set (1)

Phillips #0 Screwdriver (1)

iFixit Opening Tool (1)

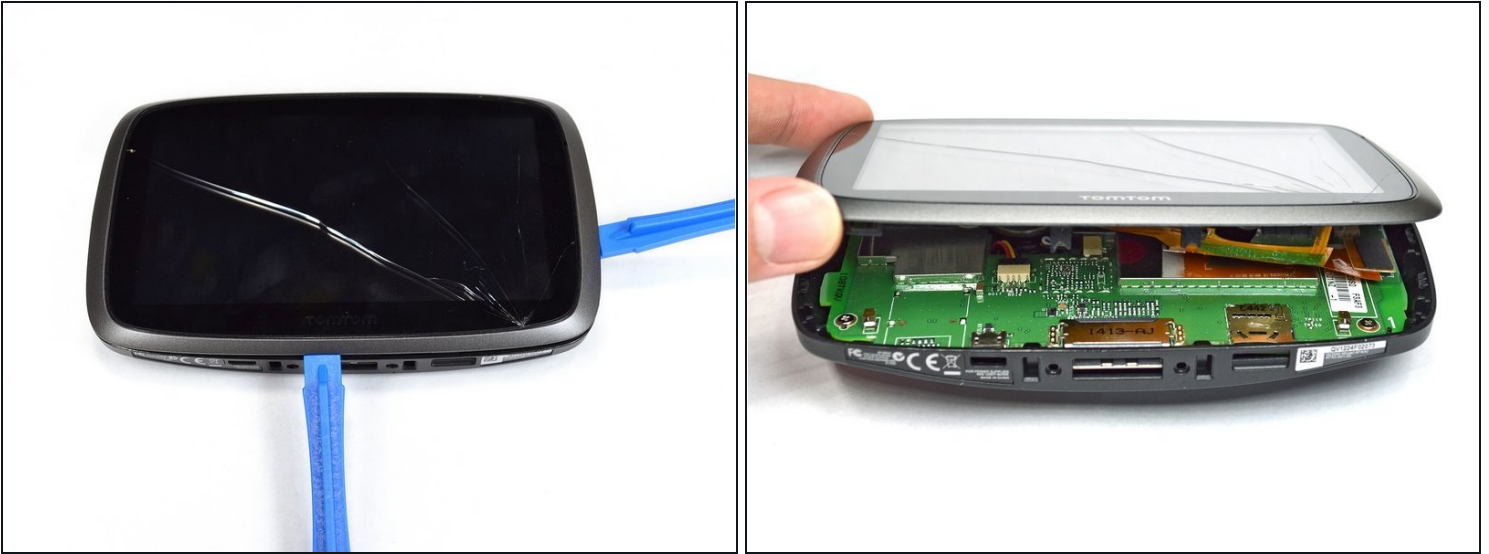
T5 Torx Screwdriver (1)

Step 1 — TomTom GO 500 Opening the Device



- Unscrew the two 3mm screws at the base of the device using the Torx T5 screwdriver.

Step 2



- Using the plastic opening tools, insert one opening tool into the gap between the screen casing and the motherboard casing. Then insert the other tool into one of the adjacent sides and slide it around the top.

ⓘ There are 14 latches that need to be undone.

⚠ The latches break easily during the opening process so we recommend purchasing a new screen casing if they break.

Step 3



- With the screen casing unlatched, locate the right side where the two connectors are.

Step 4



- Unlatch the connectors using the plastic opening tool.
- ① The orange rectangular connector may have come off in the process of removing the screen casing.

Step 5



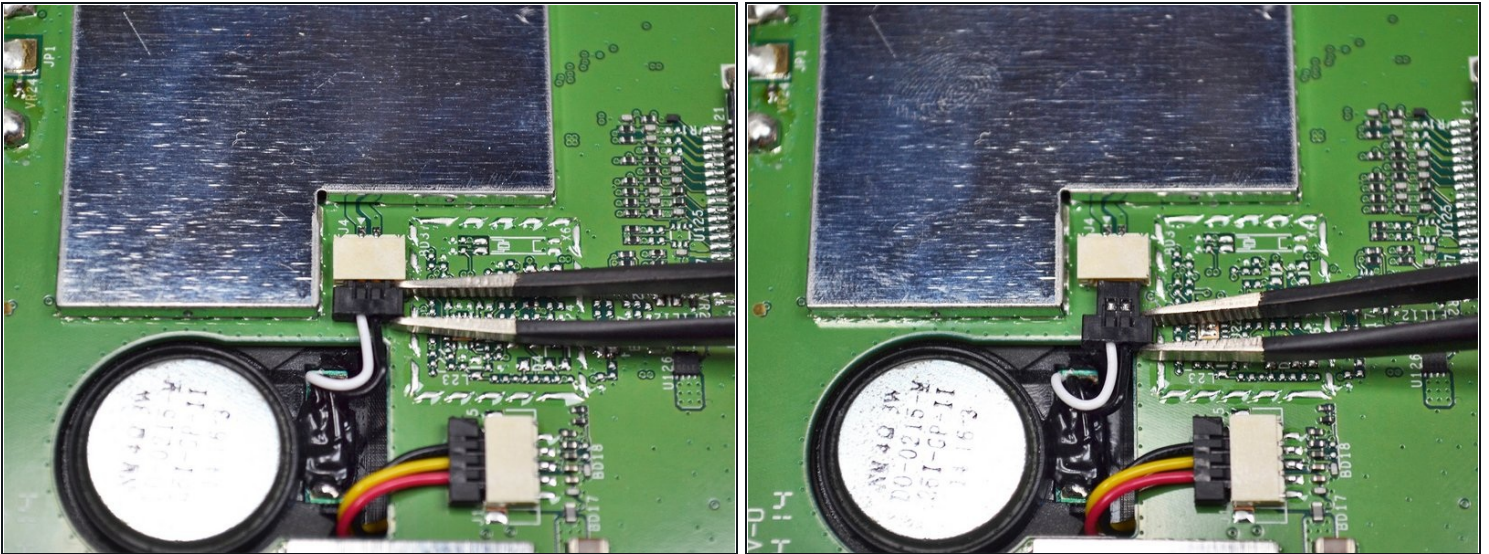
- Separate the screen casing from the motherboard casing.

Step 6 — Motherboard



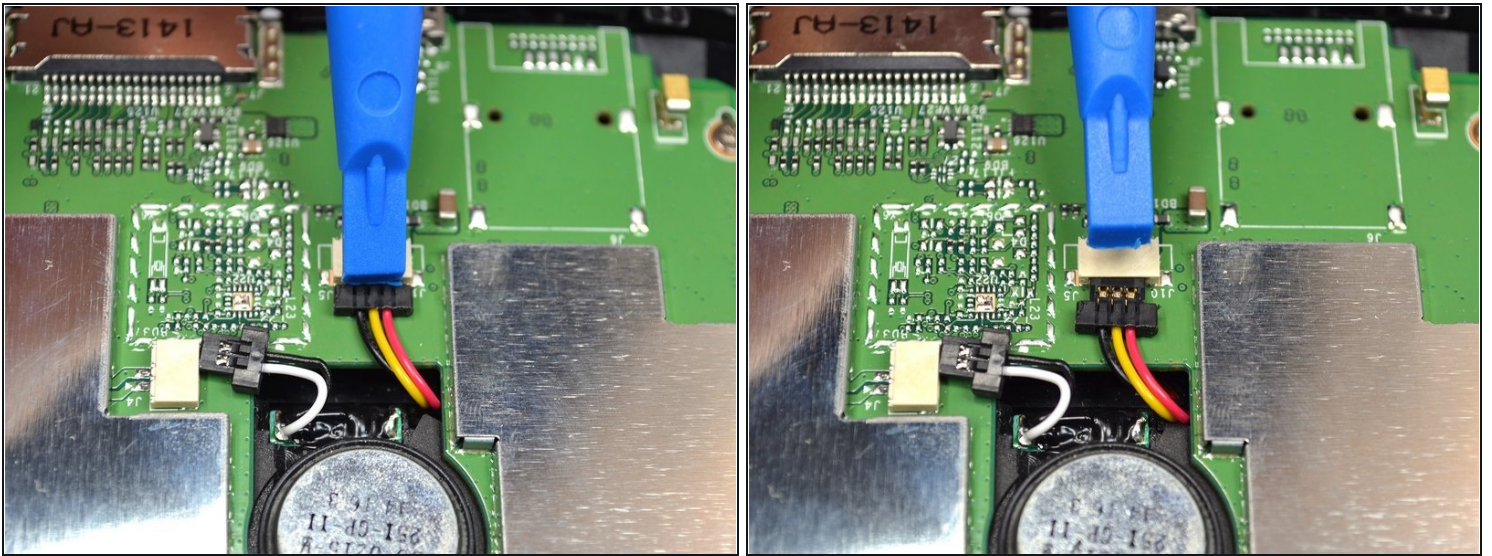
- Unscrew the five 4mm screws using the Phillips #0 screwdriver.

Step 7



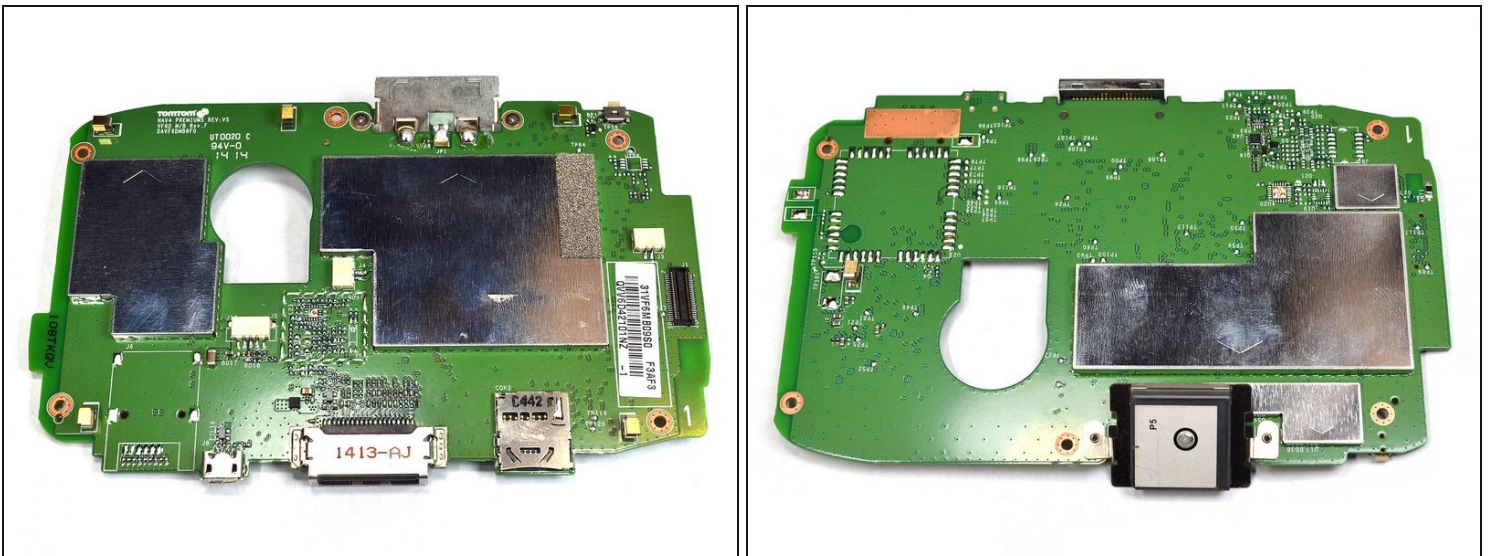
- Unplug the connector shown near the center of the motherboard using the [tweezers](#).

Step 8



- Unplug the second connector using the plastic opening tool.

Step 9



- Remove the motherboard from the casing.

To reassemble your device, follow these instructions in reverse order.