



NABI XD Screen Replacement

Is the screen cracked or non responsive then...

Written By: Marissa Schiereck



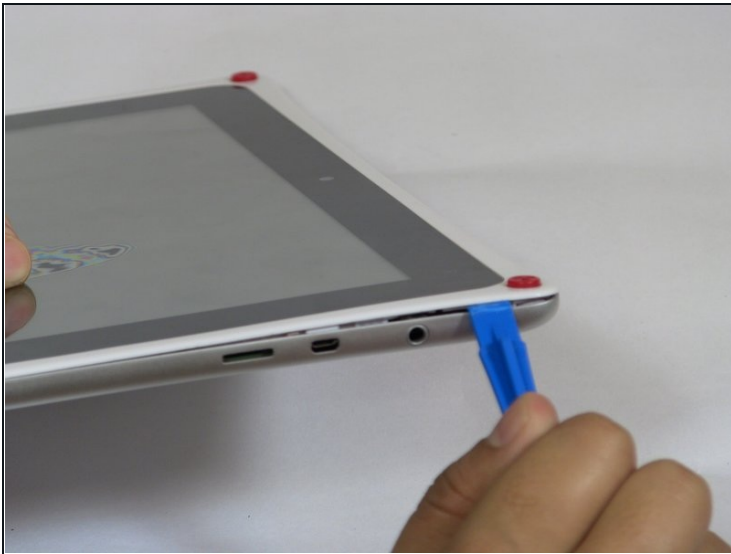
INTRODUCTION

Is the screen cracked or non responsive then replacing it will fix the NABI XD.

TOOLS:

[Tweezers](#) (1)
[Spudger](#) (1)
[Phillips #0 Screwdriver](#) (1)
[Metal Spudger](#) (1)
[iFixit Opening Tool](#) (1)

Step 1 — Rear panel



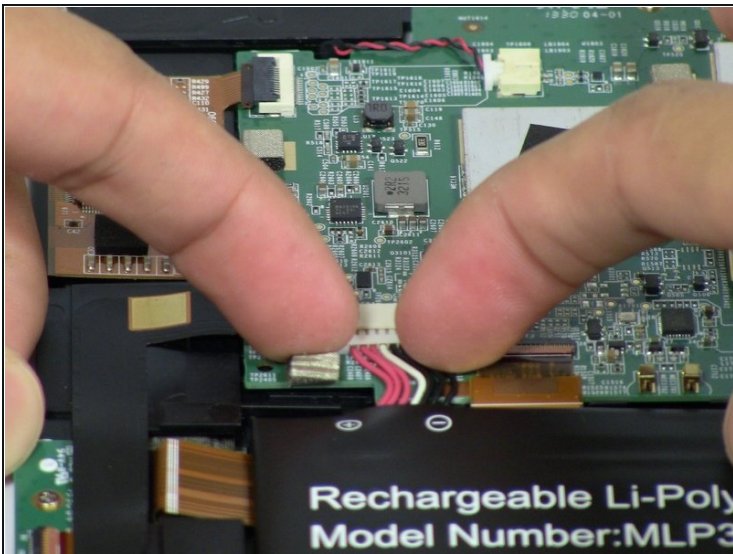
- Use the plastic opening tool at the top left corner seam, then pry the corner apart.

Step 2



- Next slide the plastic opening tool across the sides of the Nabi. It will slowly open.
- There are small plastic clips that need to be release. Gently apply outwards pressure until the clips give.
- Go around the NABI XD and separate the rear panel from the device.

Step 3 — Battery



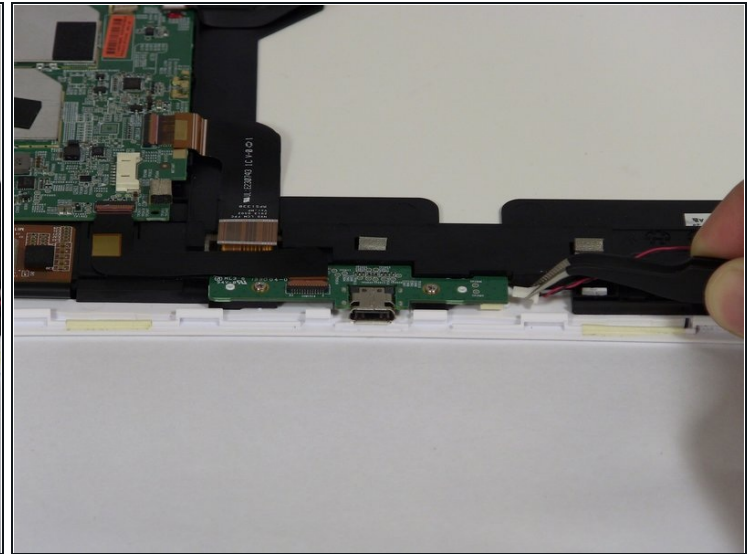
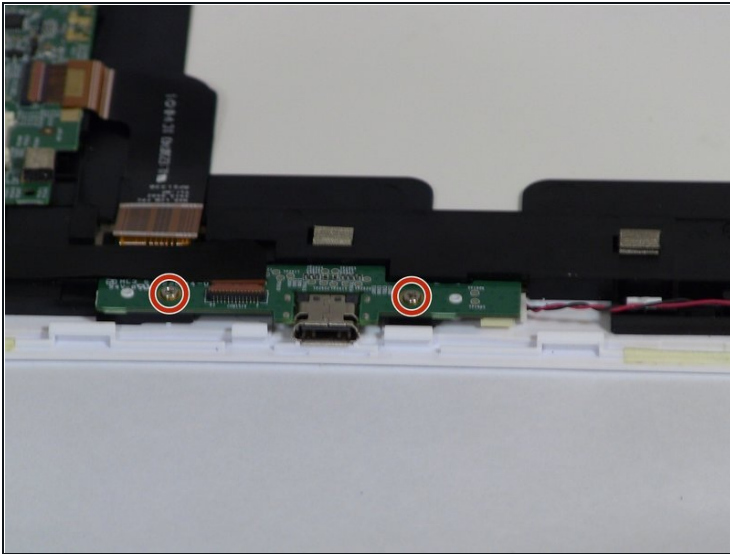
- Place your fingernails on both sides of the connector and pull it straight back away from the holder.

Step 4



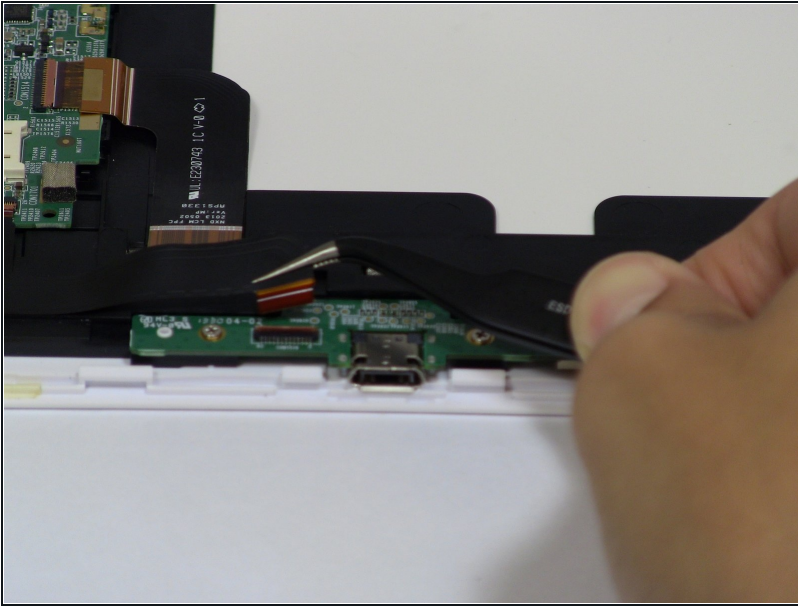
- ① Battery is glued to the base, lift carefully.
- To remove battery, lift the battery up from the motherboard.

Step 5 — Charging port



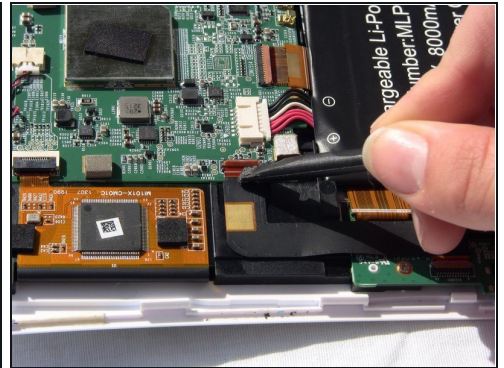
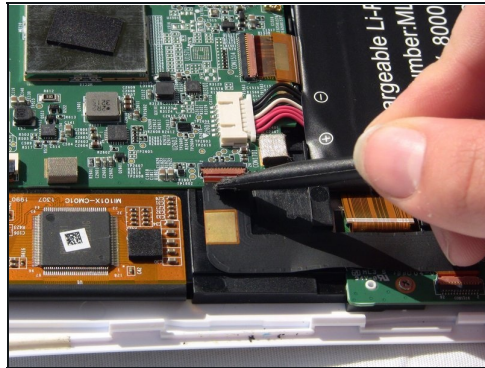
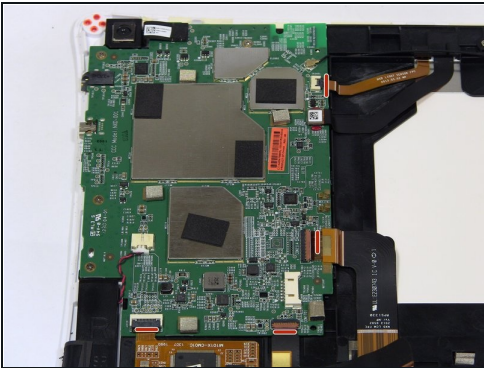
- Remove the two 4mm Phillips screws with the PH#0 screwdriver.
- Disconnect the left (L) speaker wire from the charging port by grabbing it on both sides with the [tweezers](#) and pulling straight back.

Step 6



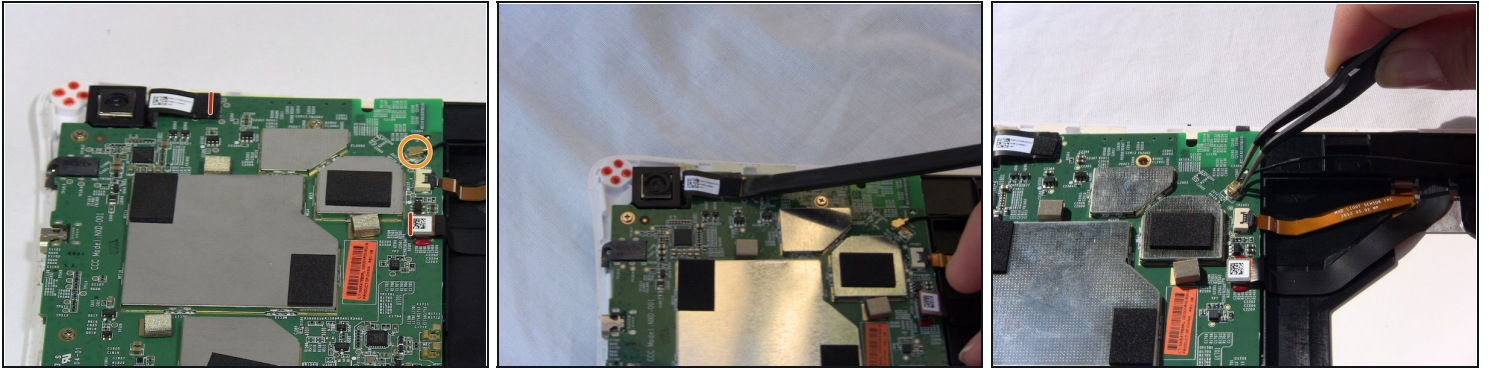
- Use your fingernails or a spudger to flip up the small retaining flap, then pull the ribbon straight back to remove
- Lift the charging port from the NABI XD.

Step 7 — Motherboard



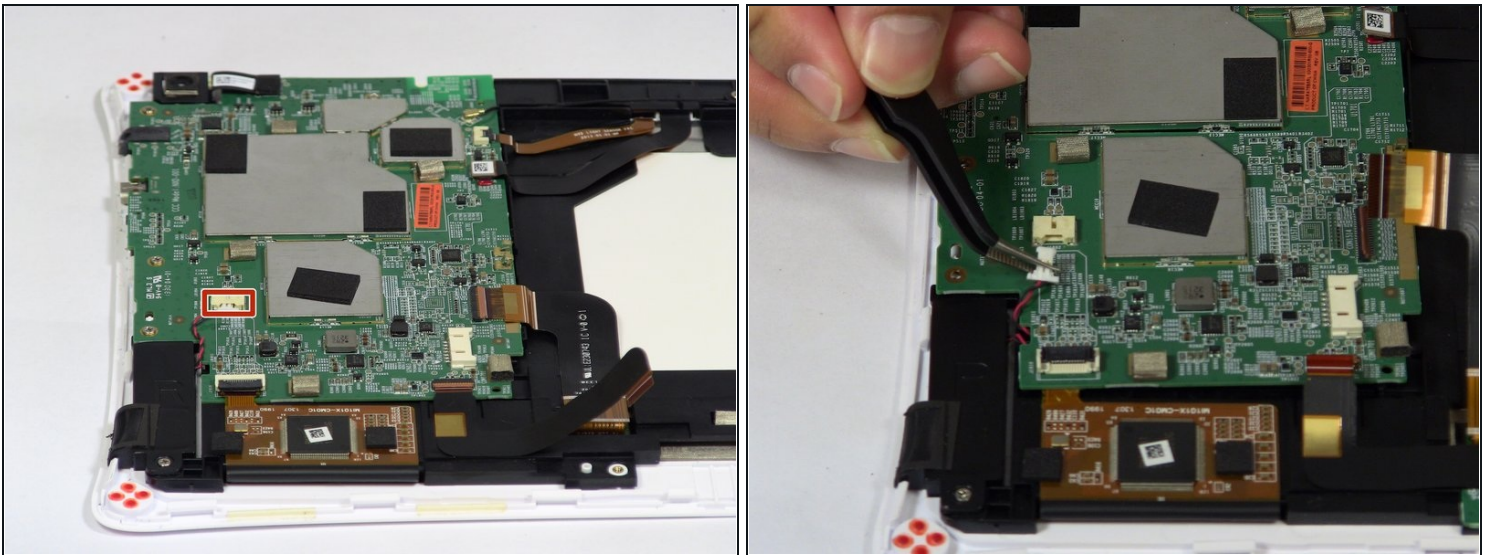
- To remove the marked ribbons, use your fingernails or a spudger to lift up small tab
 - Use the Precision [Tweezers](#) to gently pull the ribbons straight out of the connectors.
- ① You need to remove 4 ribbons

Step 8



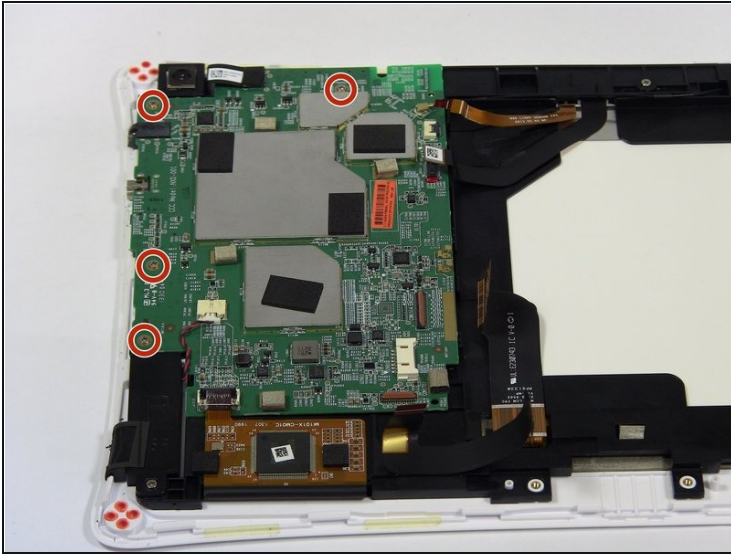
- Disconnect the camera by lifting the ribbon straight up. Also disconnect the remaining ribbon by lifting up gently.
- To disconnect antenna wire, use the tweezers to pry connector straight from the board.

Step 9



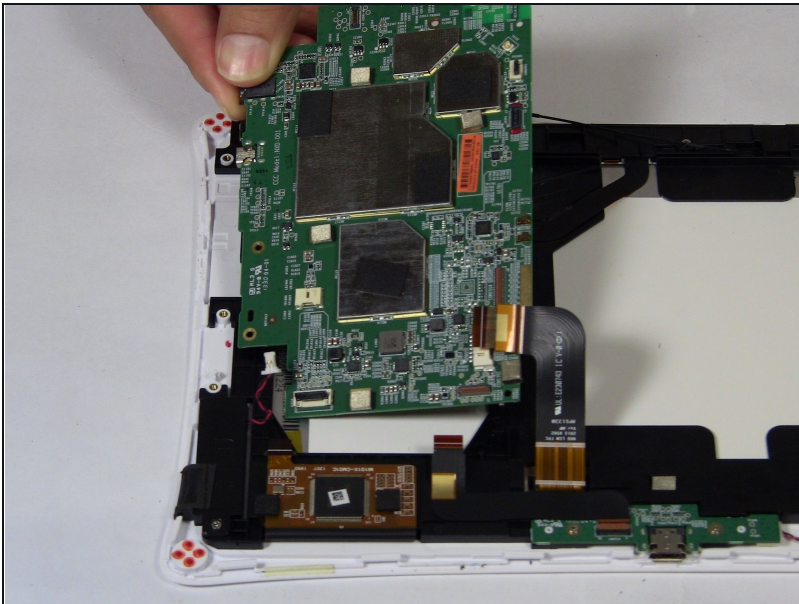
- Disconnect the Right speaker by grabbing the wire head by its sides and pulling it back from the connector.

Step 10



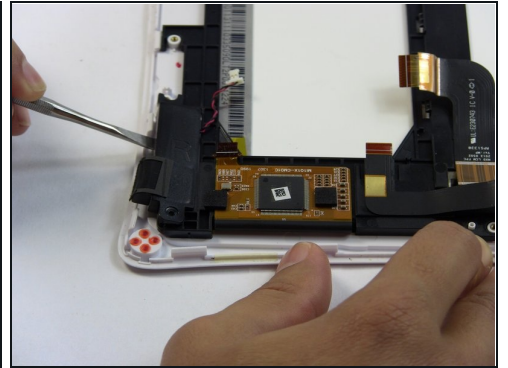
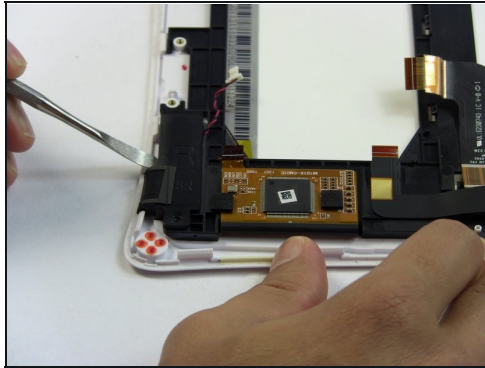
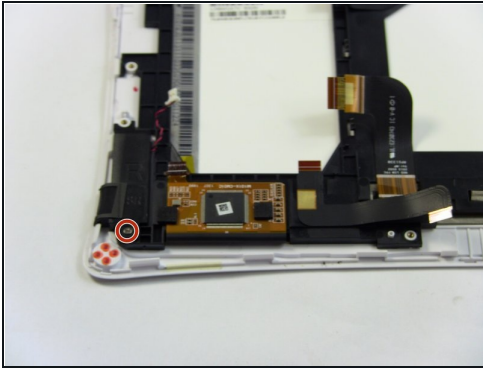
- Remove the four 4mm Phillips screws with the PH#0 screwdriver.

Step 11



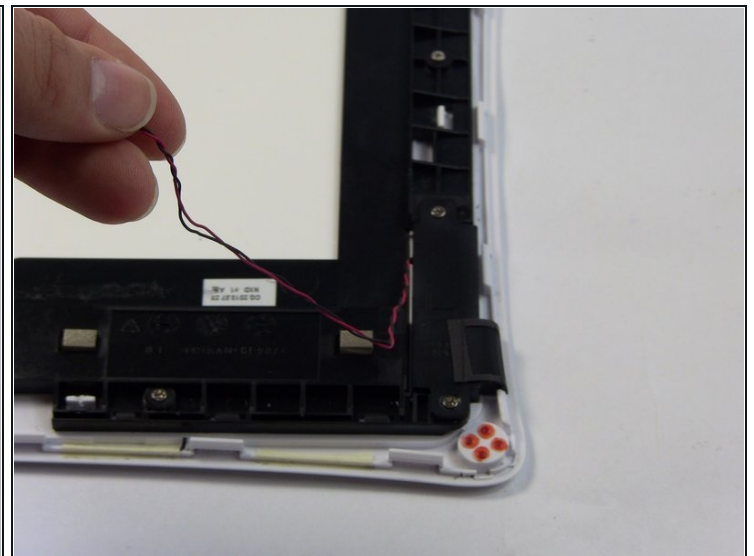
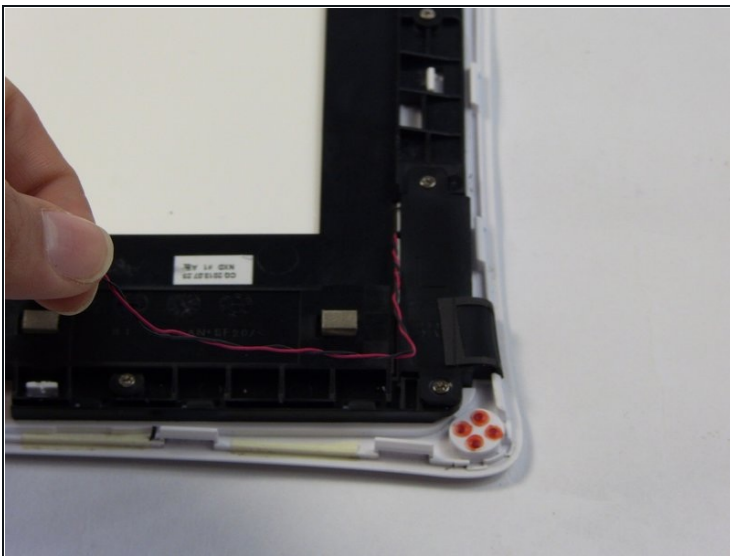
- Lift the motherboard up away from the Nabi XD.

Step 12 — Speakers



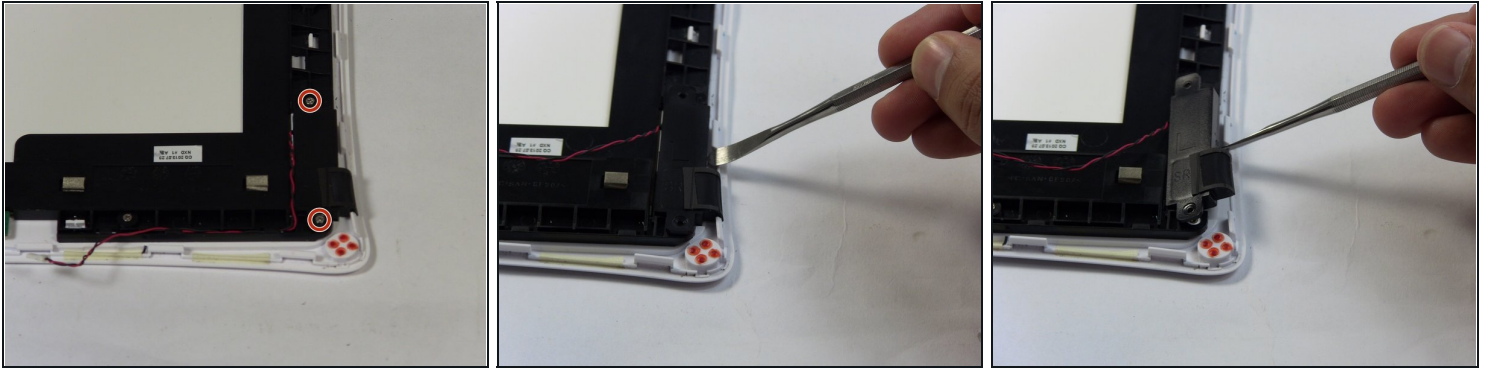
- Right (R) speaker removal:
 - Remove one 4mm Phillips screw.
 - Use the metal spudger to separate the speaker from the frame.
- ⓘ The speaker is glued to the Nabi XD it will require some force to separate them.

Step 13



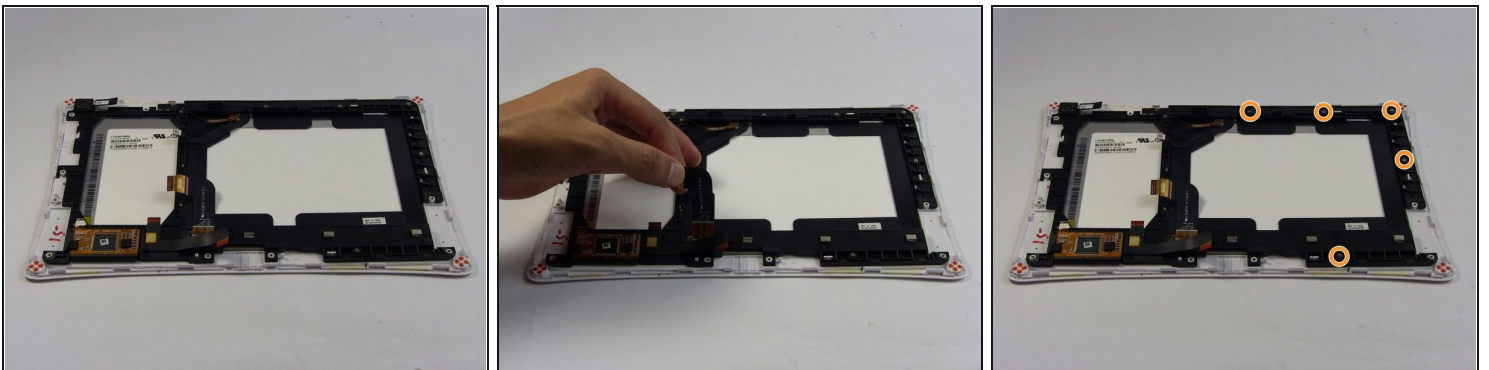
- Remove the left (L) speaker wire from the frame by pulling it to the side and up.
- ⓘ The wire in this step, is connected to the charging port. Removing it, is shown in detail on step 6.

Step 14



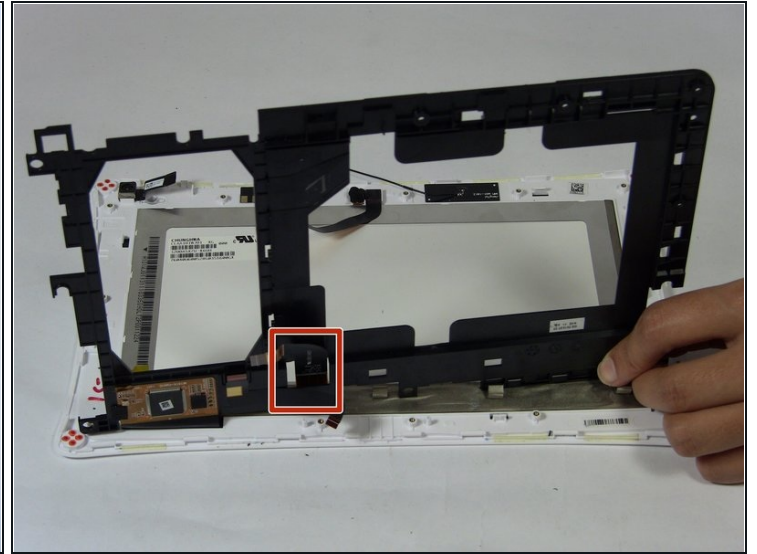
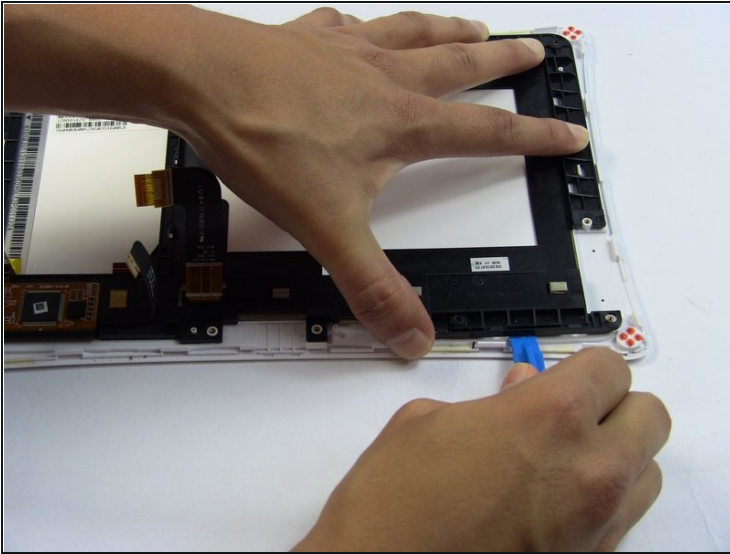
- Left (L) speaker removal:
 - Remove two 4mm Phillips screws.
- Use the metal spudger to separate the speaker from the frame.

Step 15 — Screen



- The ribbons are glued to the frame so gently lift them up without ripping them.
- Lightly lift the marked wires and ribbons from the frame by gently pulling them in the direction of the arrows and up.
- Remove five 4mm Phillips screws from the frame.

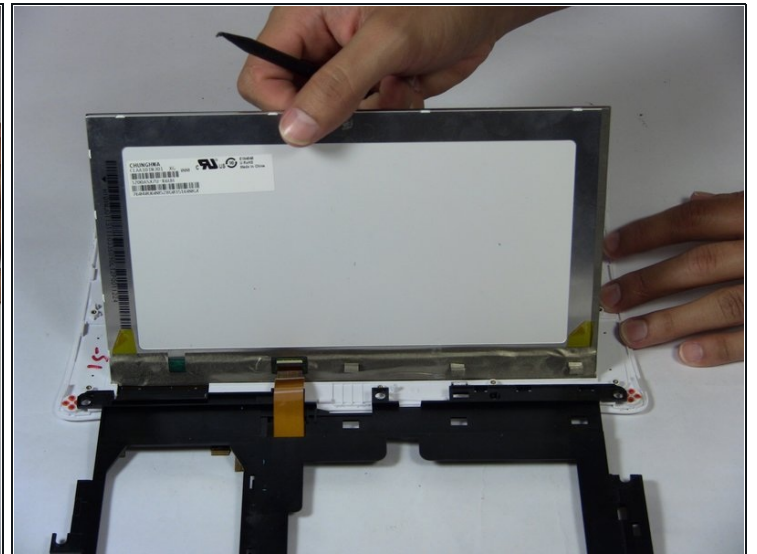
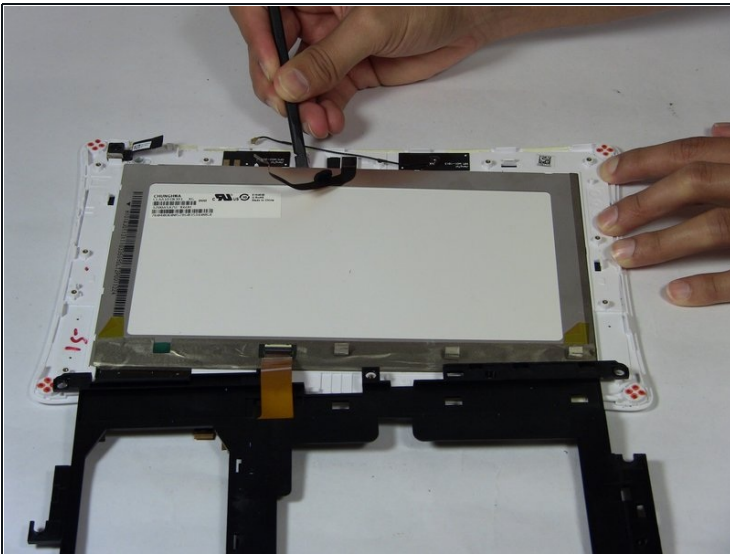
Step 16



- Use the Plastic Opening tools to lift the frame up.
- The ribbons need to be detangled from the frame while you are lifting it up.

⚠ Do not yank the frame away from the Nabi XD it is connect to it by a ribbon. Gently lift.

Step 17



- Lift the screen up with the black spudger.
- Lift the frame up slowly and place it to the side.

To reassemble your device, follow these instructions in reverse order.