



# JBL Pulse Button Board Replacement

A guide on how to breakdown the button panel in order to replace the button board.

Written By: Maxwell Busenbarrick



---

## INTRODUCTION

Often times when buttons have become unresponsive, a faulty button board may be the cause. In this guide we will show you how to access and replace the button board.

---

### TOOLS:

- [iFixit Opening Tools](#) (1)
-

## Step 1 — Button Board



- Use a plastic opening tool to pry around the edges of the circular rubber panel.

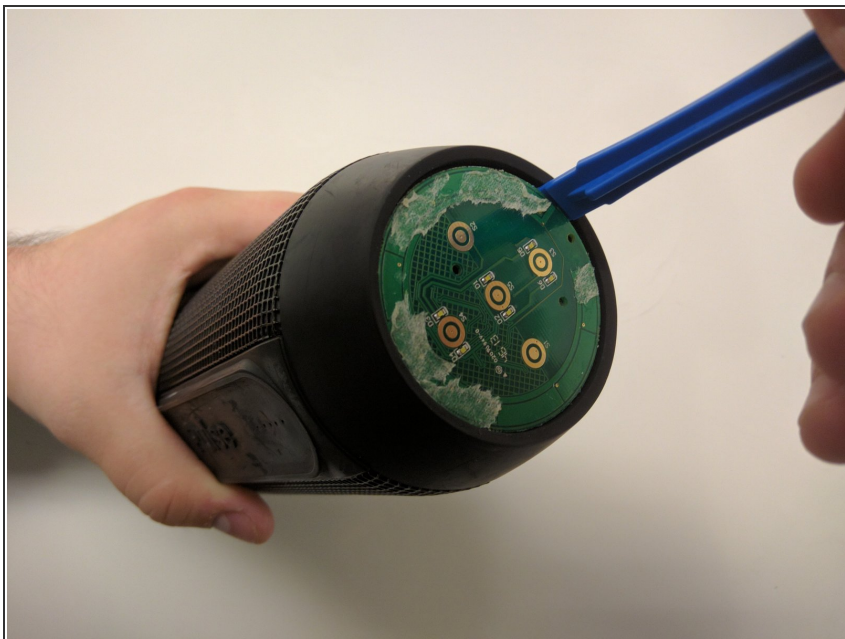
## Step 2



- Once the edges are loose, pull off the rubber button panel completely.
- ☑ New adhesive will have to be applied when reassembling.



### Step 3



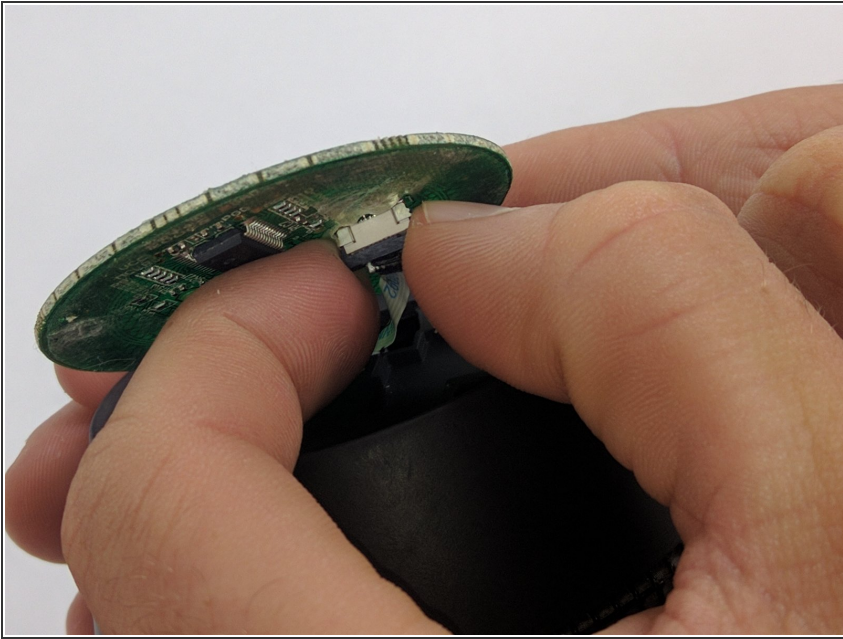
- Use your plastic opening tool to pry the button board loose by lifting the edges.

### Step 4



- Lift the button board, exposing the attached cable.
- ☑ New adhesive will have to be applied when reassembling.

## Step 5



- Pull black piece on top of socket away from board to loosen, then detach the cable.

To reassemble your device, follow these instructions in reverse order.