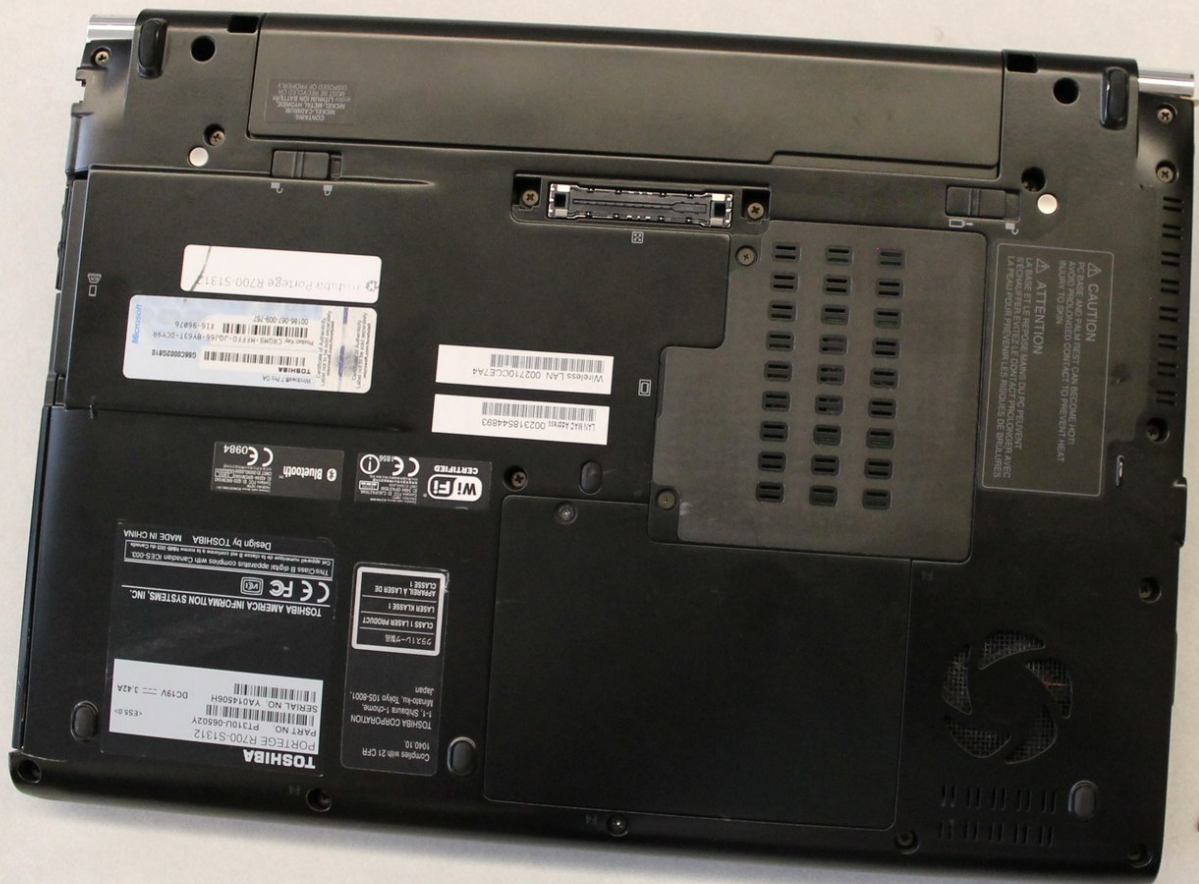




Toshiba Portege R700-S1312 RAM Replacement

Guide on how to disassemble your Toshiba Portege R700-S1312 and replace its RAM.

Written By: Francisco Vilchis



INTRODUCTION

This guide will help Toshiba users replace or add RAM to their laptop devices.



TOOLS:

- [Phillips #00 Screwdriver](#) (1)



PARTS:

- [PC3-8500 2 GB RAM Chip](#) (2)

Step 1 — Battery



- Locate the battery on the backside of the laptop. The battery is usually located at the bottom.

Step 2



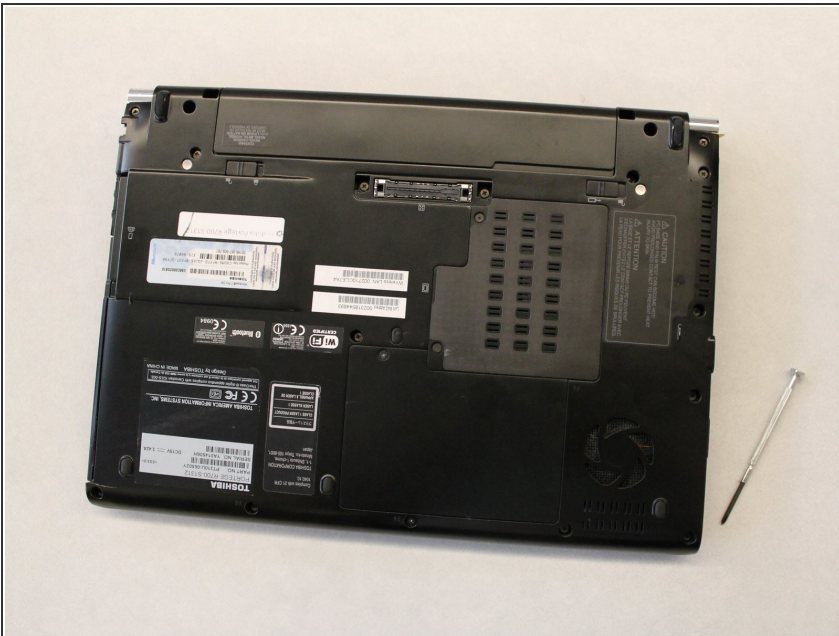
- Locate the battery lock button and push it towards the unlock position.

Step 3



- Hold the next lock in the unlock position. Simultaneously pull the battery towards you.

Step 4 — RAM



- Flip the laptop over.

Step 5



- Using a Phillips #00 Screwdriver unscrew the 2 40mm screws that are located on the plate covering the RAM.

Step 6



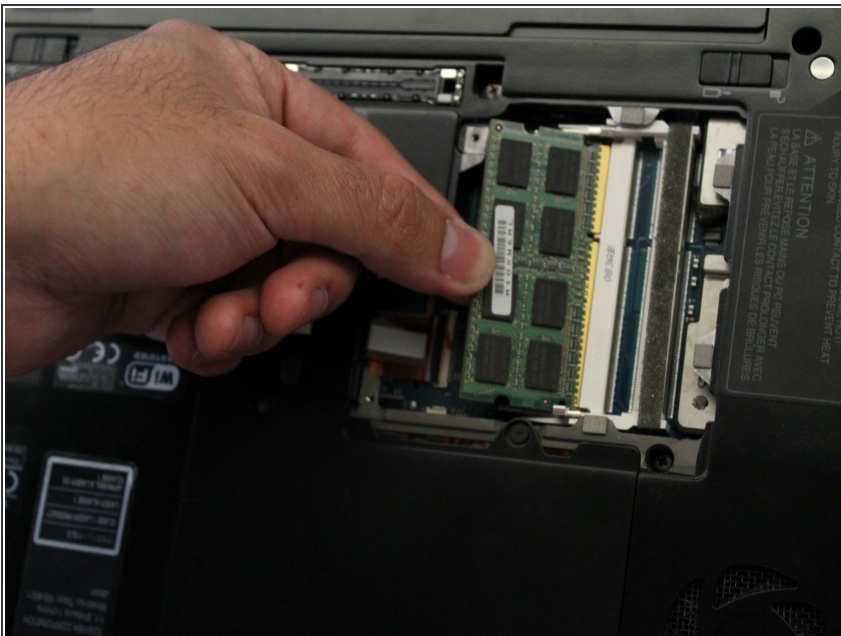
- Remove the plate covering the RAM.

Step 7



- Pull the sides holding the RAM in place until there is a slight pop.

Step 8



- The RAM stick will lift up on its own. Simply remove it.

Step 9



- Place new RAM into the RAM drive and gently press until there is a slight pop.

To reassemble your device, simply follow steps 1-3 in reverse order.