



HTC Wizard 100 Motherboard Replacement

How to remove the motherboard from the HTC Wizard 100.

Written By: Eric W



INTRODUCTION

Make sure you complete the previous guides.

TOOLS:

- [Heavy-Duty Spudger](#) (1)
 - [Phillips #000 Screwdriver](#) (1)
 - [T6 Torx Screwdriver](#) (1)
 - [iFixit Opening Tool](#) (1)
-

Step 1 — Battery



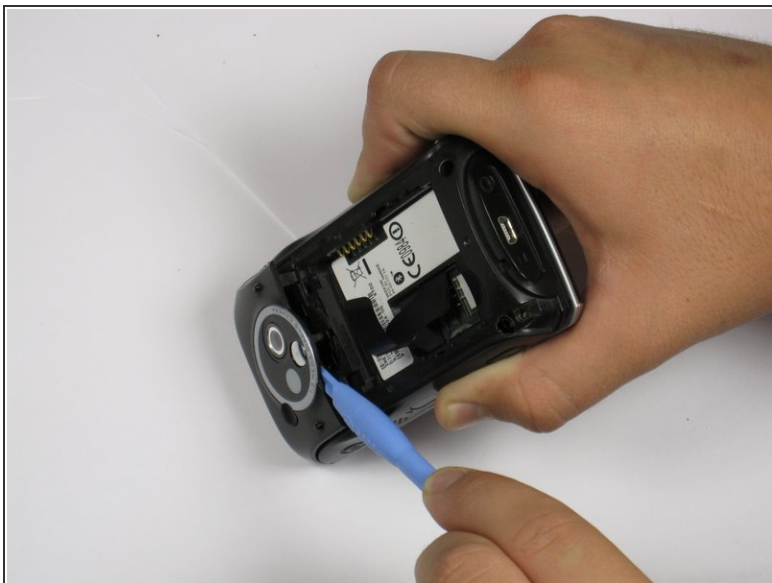
- Power the phone off.
- Use your thumb to gently press downward and away from the camera to remove the battery cover.

Step 2



- Pull on the plastic tab to release the battery.

Step 3 — Back Case



- Use a plastic opening tool to remove the camera cover.

⚠ Work around the corners to avoid breaking the plastic clips that hold the camera cover on.

- Lift the camera cover off of the phone.

Step 4



- Remove the stylus from the phone.
- Remove the four 5.5 mm screws with the T6 Torx Screwdriver.

⚠ One of the screws might be under a sticker, which will void your warranty.

Step 5



⚠ Be Careful! Do not insert the spudger in between the keyboard and screen. This could break the keyboard off the phone.

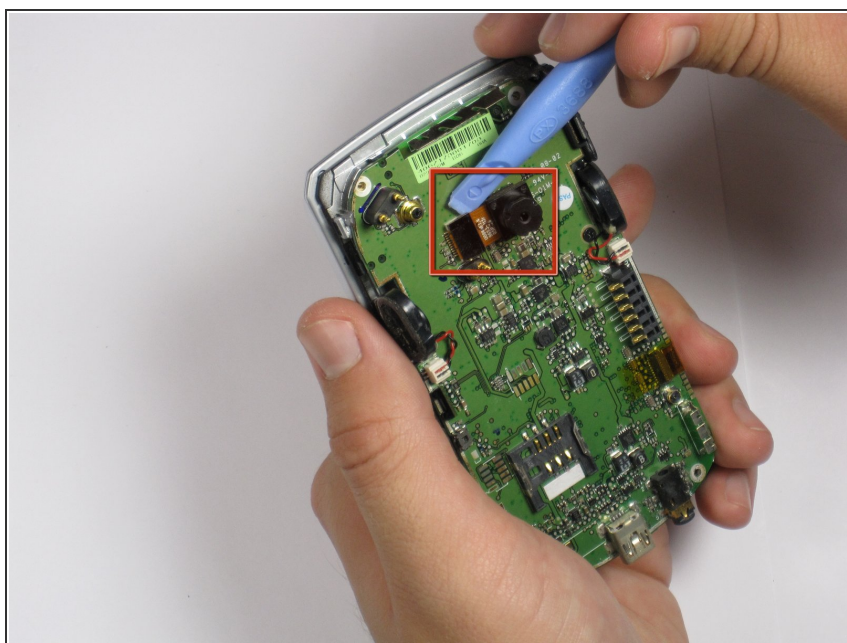
- i** If your phone contains a memory card, you may want to remove it before proceeding with this step.
- Insert spudger in the bottom corner as seen in the picture. Carefully slide the spudger from the bottom towards the top as seen in the second picture.
- Lift the back case off completely.
- i** The speakers might be dangling and unsecured.

Step 6 — Speakers



- Grip the speaker connector with your thumb and finger and gently pull up.
- Repeat for 2nd speaker.

Step 7 — Camera



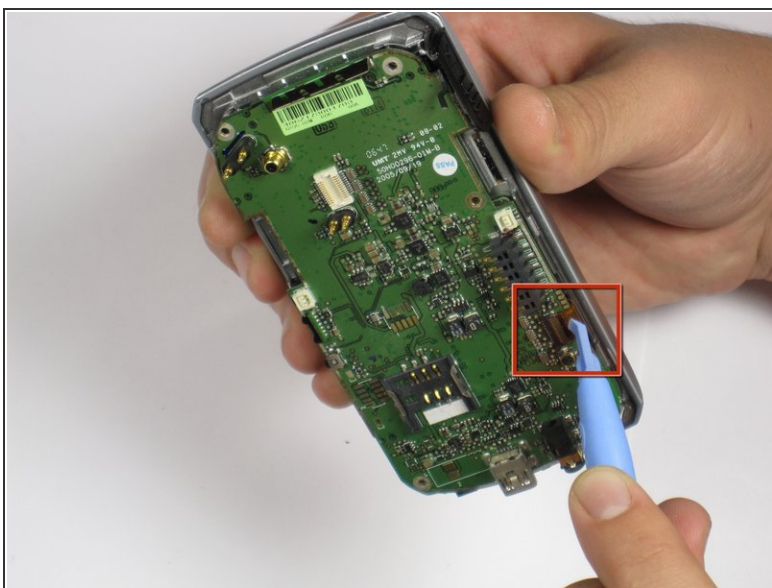
- Locate the camera and pry off with the plastic opening tool or spudger.

Step 8 — Motherboard



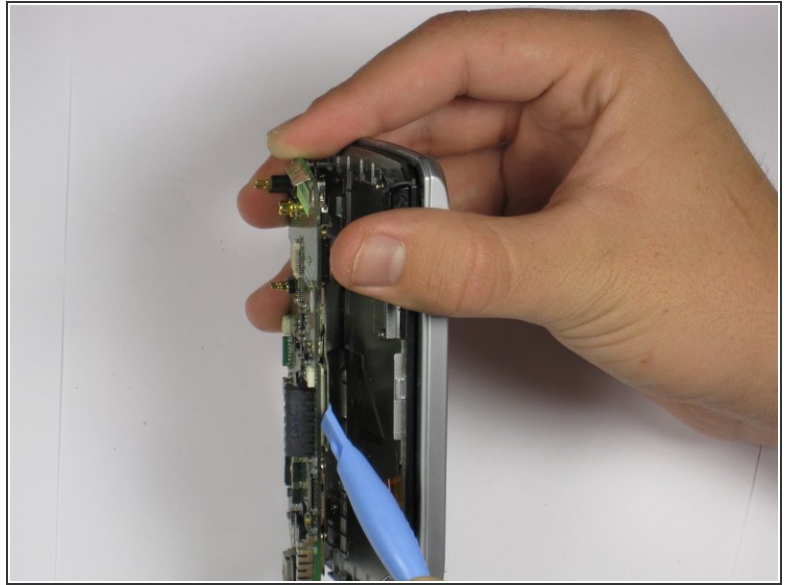
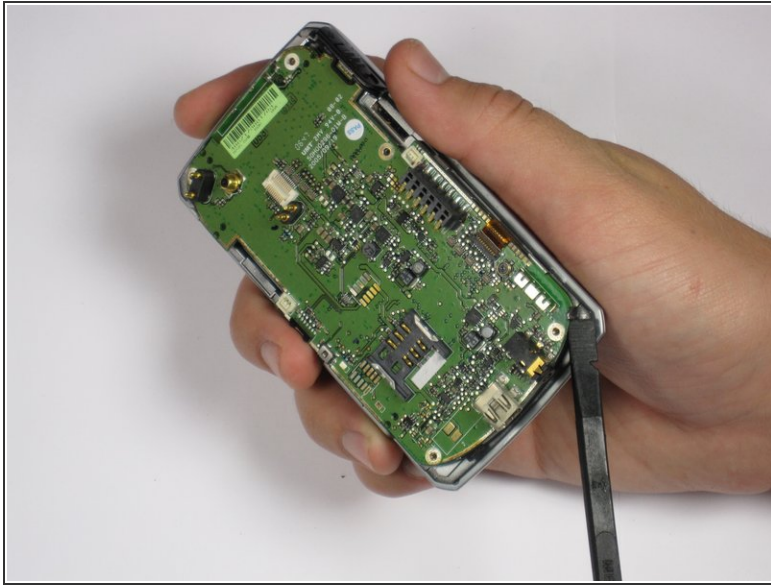
- Remove the 3.4 mm black screw with the Phillips #000 screwdriver.

Step 9



- Remove the plastic tape to reveal the connector.
- Use your finger or plastic opening tool to flip the connector and release the cable.

Step 10



- Use the plastic opening tool to carefully lift the motherboard off one corner at a time.

⚠ Lift the motherboard slowly away from the keyboard because there is a cable attached to bottom of the motherboard.

- If the motherboard is not easily removed by pulling, then lift one side of the motherboard until you can see the attached cable. Then use the plastic opening tool to detach the cable from the motherboard.

To reassemble your device, follow these instructions in reverse order.