

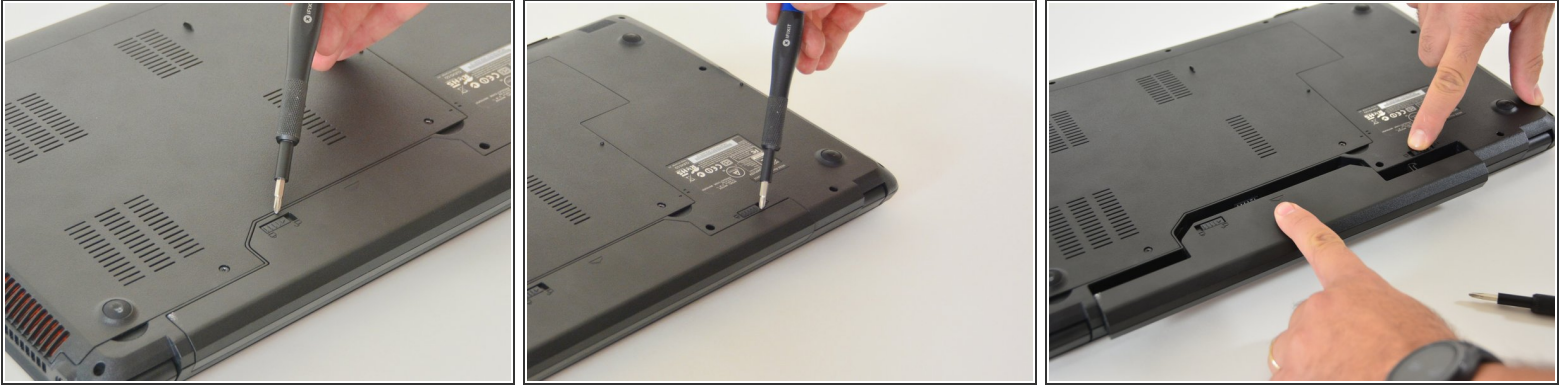


# why! W670SZQ1 Fan Replacement

Written By: Felice Suglia

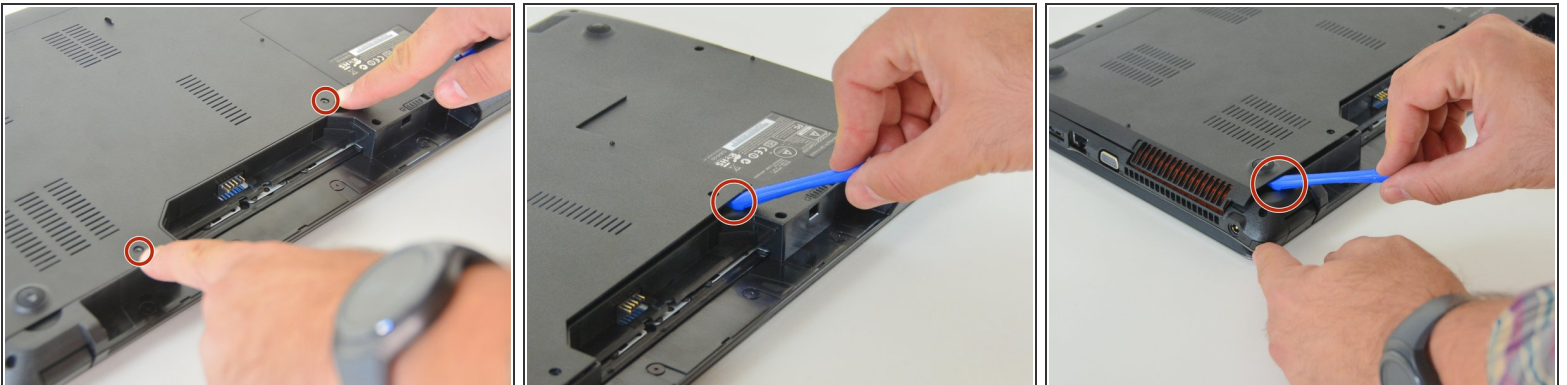


## Step 1 — accumulator



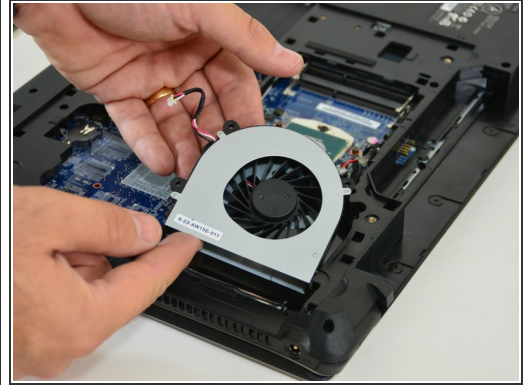
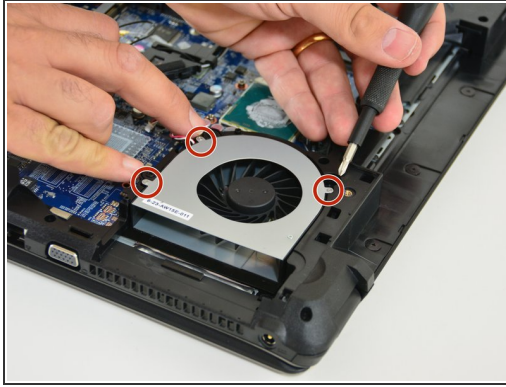
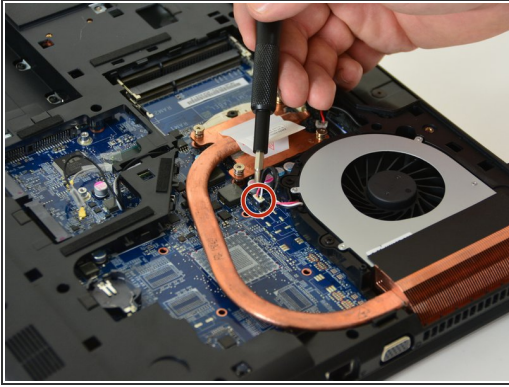
- Open the latch of the accumulator on the left side.
- Open the battery latch on the right side.
- Remove the accumulator by simultaneously holding the right-hand latch open.

## Step 2 — Access to the most important components



- Use the Philips screwdriver to remove the two screws at the bottom of the cover.
- Lift the cover at the bottom right with the iFixit Opening Tool
- Lift the cover at the bottom left with the iFixit Opening Tool
- Finally, remove the cover to gain access to the most important components.

## Step 3 — Fan



- First, locate the fan. Then pull out the supply cable of the fan.
- Remove the three retaining screws of the fan.
- Finally, remove the fan by lifting it out.

Repeat the steps in reverse order to reassemble your device.