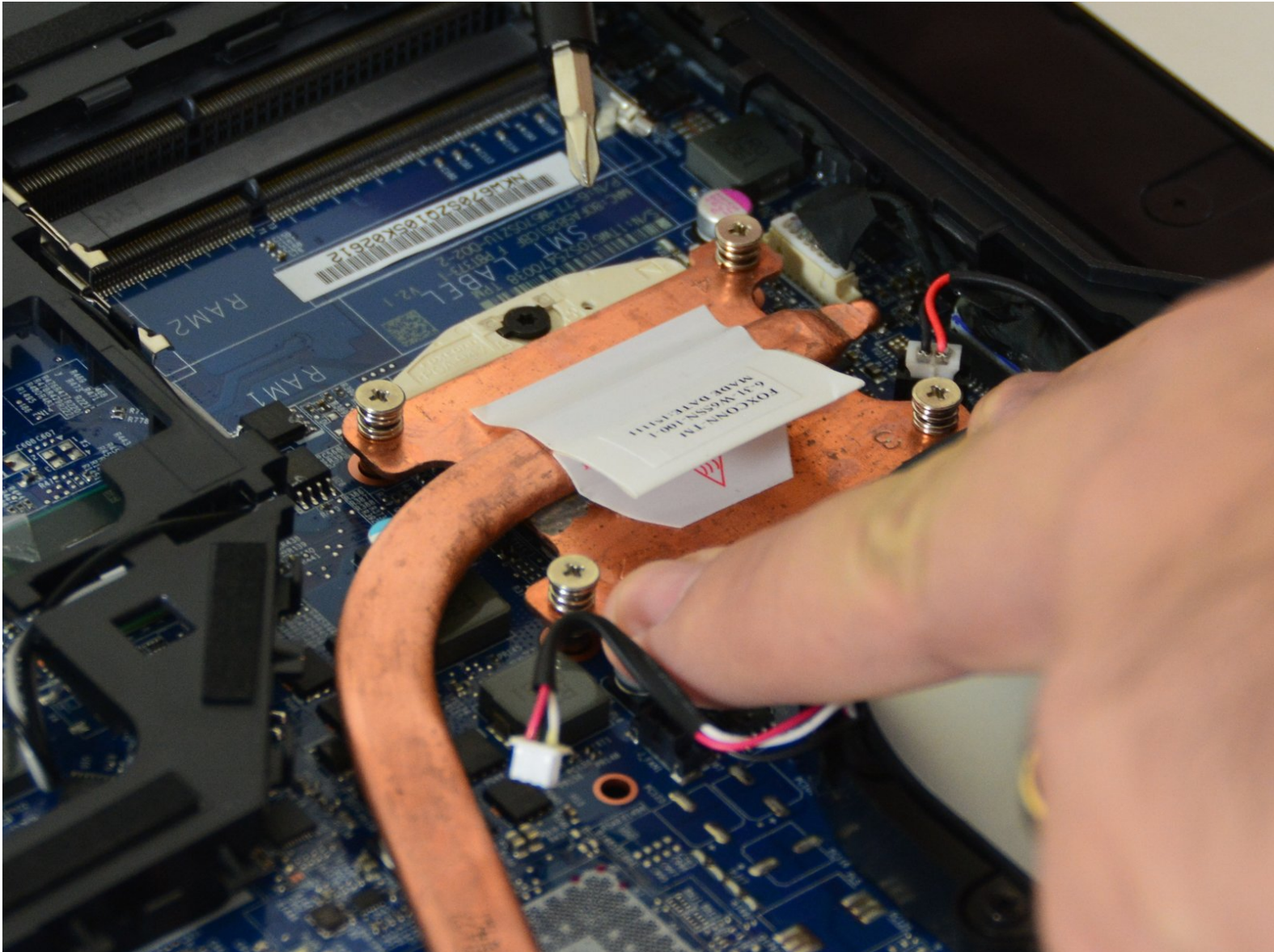




why! W670SZQ1 Processor replacement

Written By: Felice Suglia

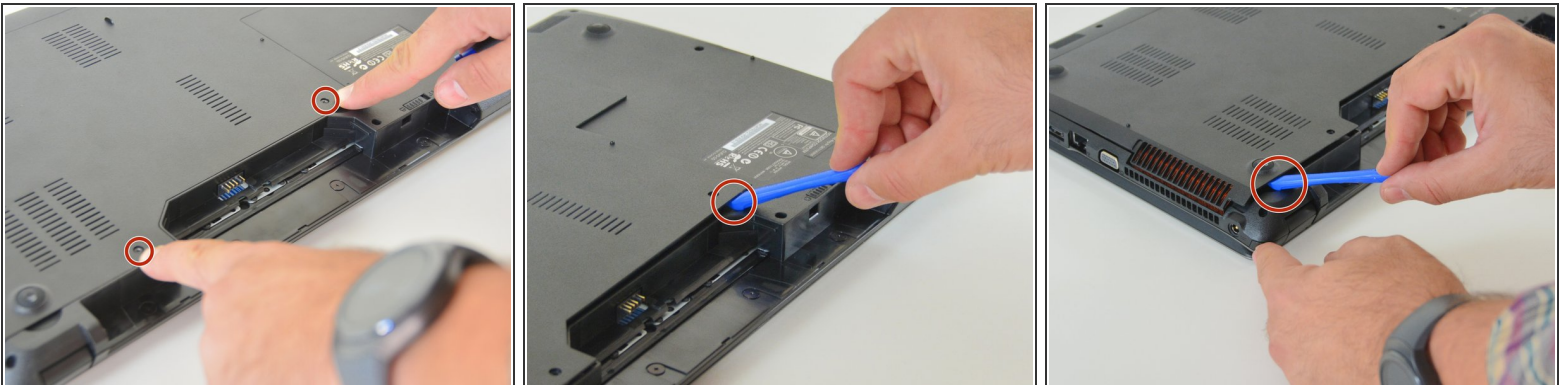


Step 1 — accumulator



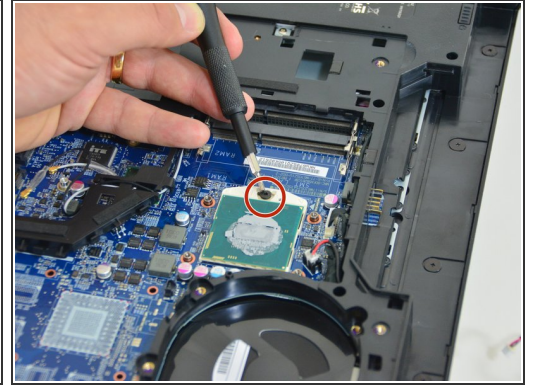
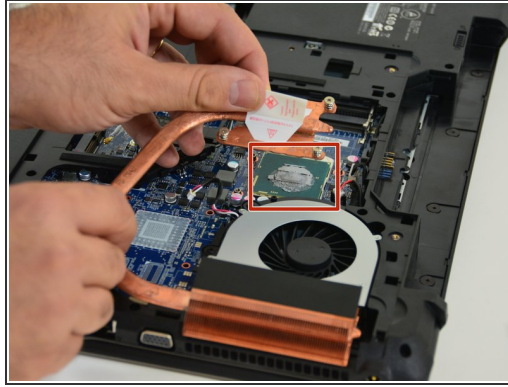
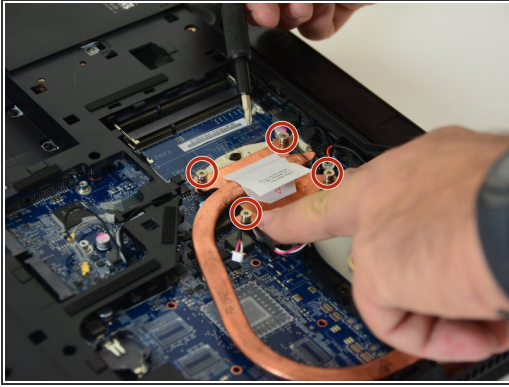
- Open the latch of the accumulator on the left side.
- Open the battery latch on the right side.
- Remove the accumulator by simultaneously holding the right-hand latch open.

Step 2 — Access to the most important components



- Use the Philips screwdriver to remove the two screws at the bottom of the cover.
- Lift the cover at the bottom right with the iFixit Opening Tool
- Lift the cover at the bottom left with the iFixit Opening Tool
- Finally, remove the cover to gain access to the most important components.

Step 3 — Processor



- With a Philips screwdriver, remove the 4 mounting screws of the heat sink.
- Now remove the heat sink. Once the heat sink is removed you can see the processor with its lock.
- Unlock the processor and remove it from its socket.

Repeat the steps in reverse order to reassemble your device.