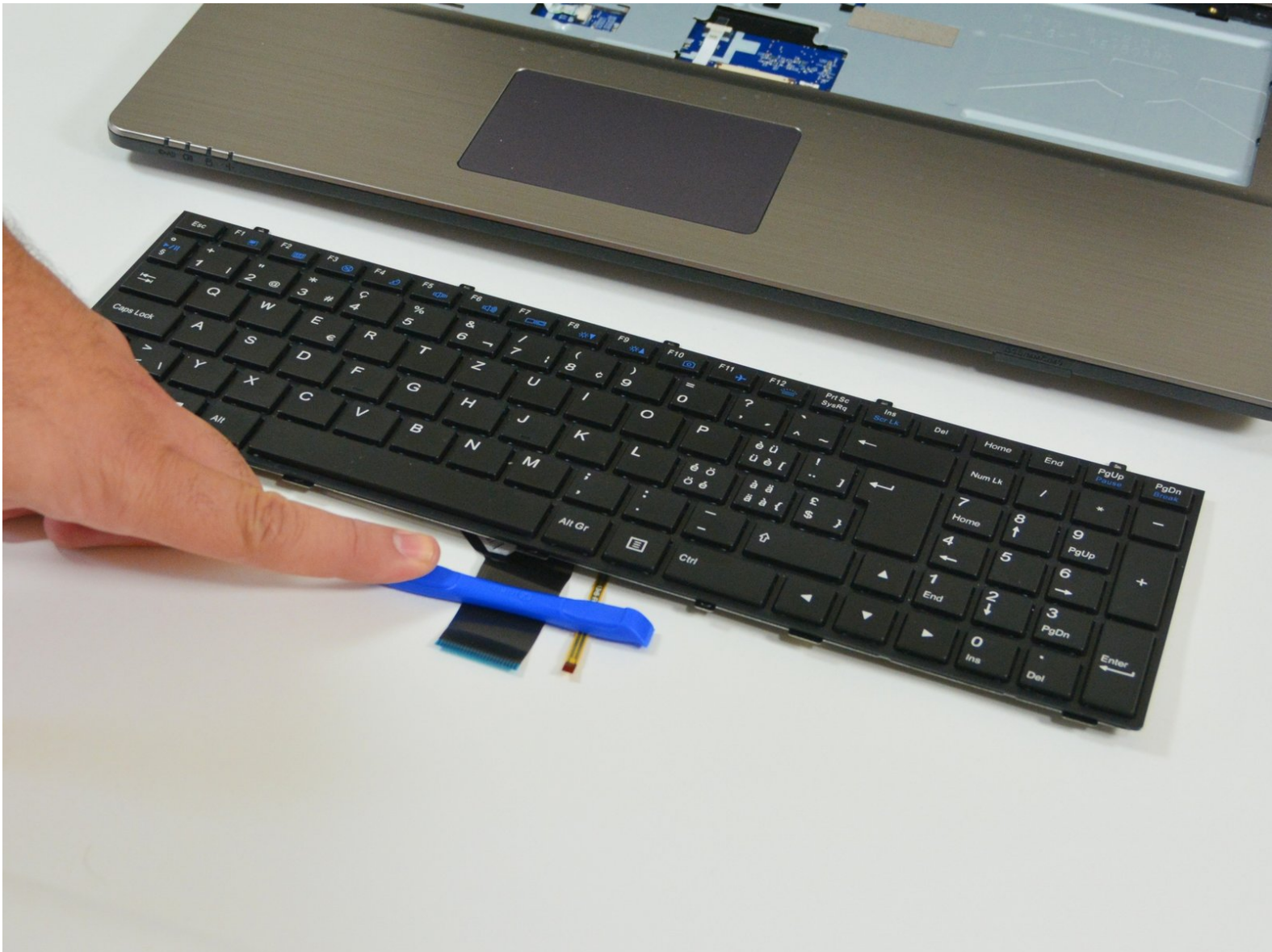




# why! Replace the W670SZQ1 keyboard

Written By: Felice Suglia

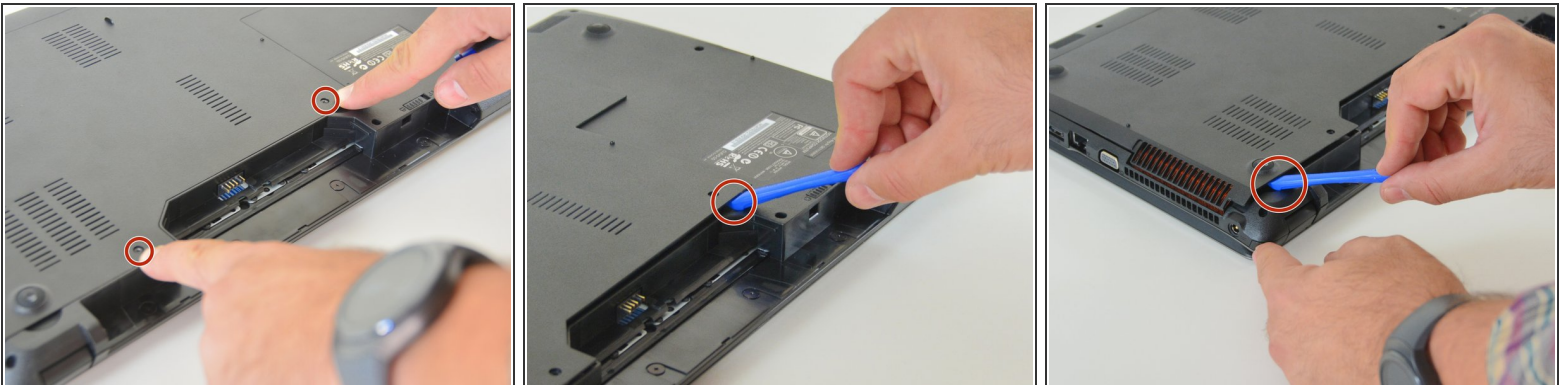


## Step 1 — accumulator



- Open the latch of the accumulator on the left side.
- Open the battery latch on the right side.
- Remove the accumulator by simultaneously holding the right-hand latch open.

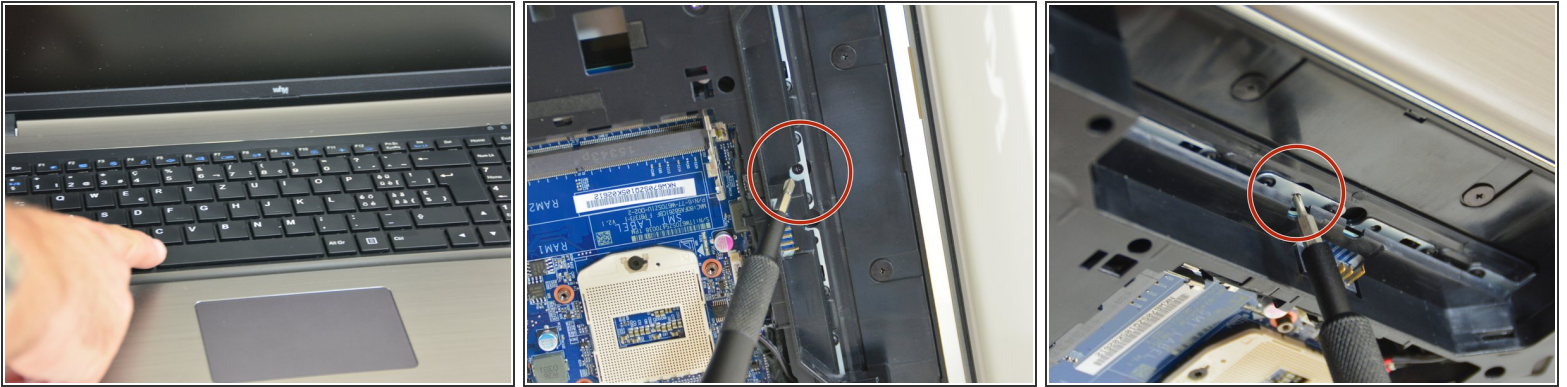
## Step 2 — Access to the most important components



- Use the Philips screwdriver to remove the two screws at the bottom of the cover.
- Lift the cover at the bottom right with the iFixit Opening Tool
- Lift the cover at the bottom left with the iFixit Opening Tool
- Finally, remove the cover to gain access to the most important components.

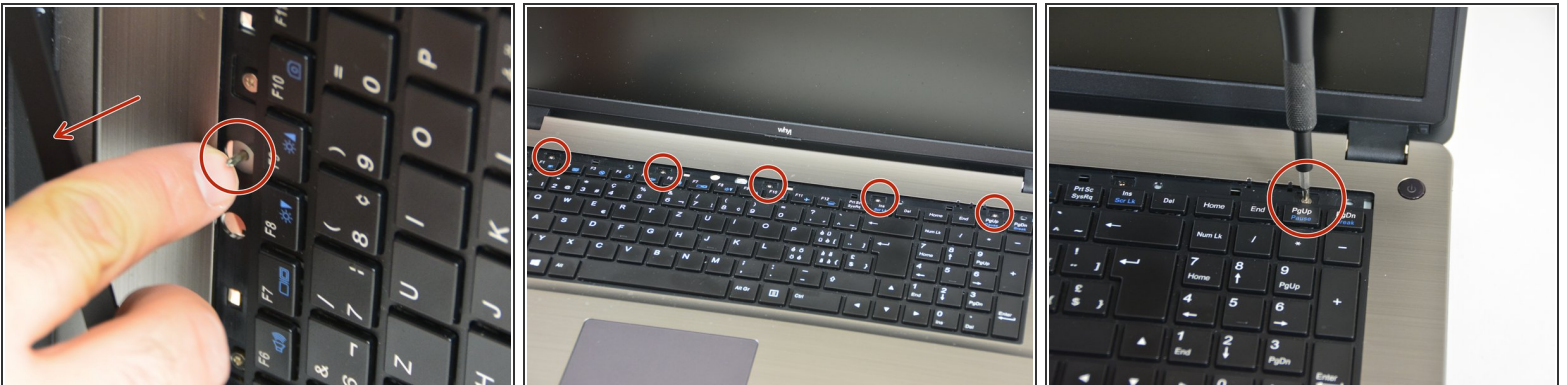


## Step 3 — keyboard



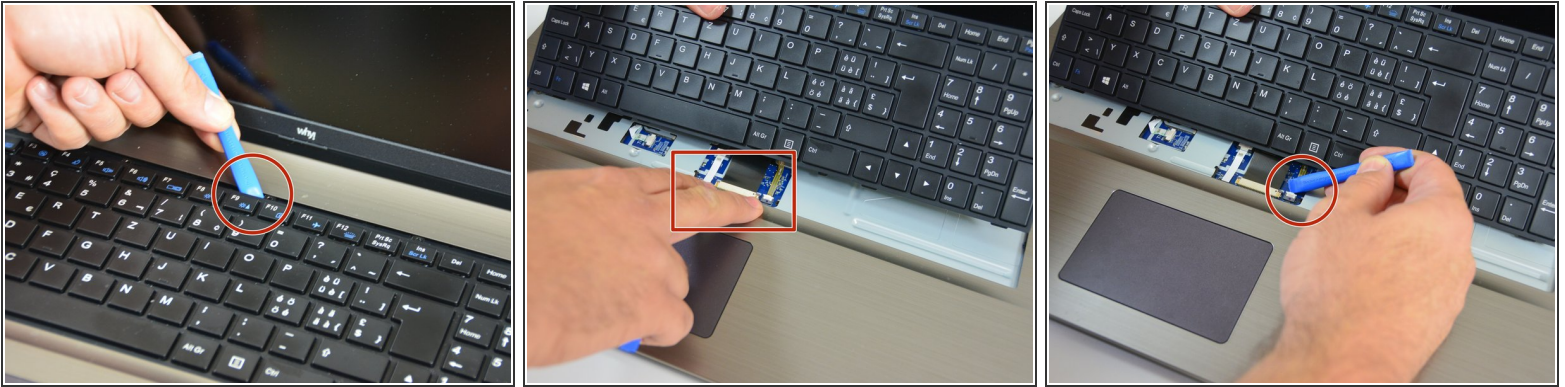
- Once the bottom cover is removed you can start disassembling the keyboard.
- First, invert the calculator and then loosen the screw as shown in picture 2 of this step.
- Then unzip the keyboard screw cover strip.

## Step 4



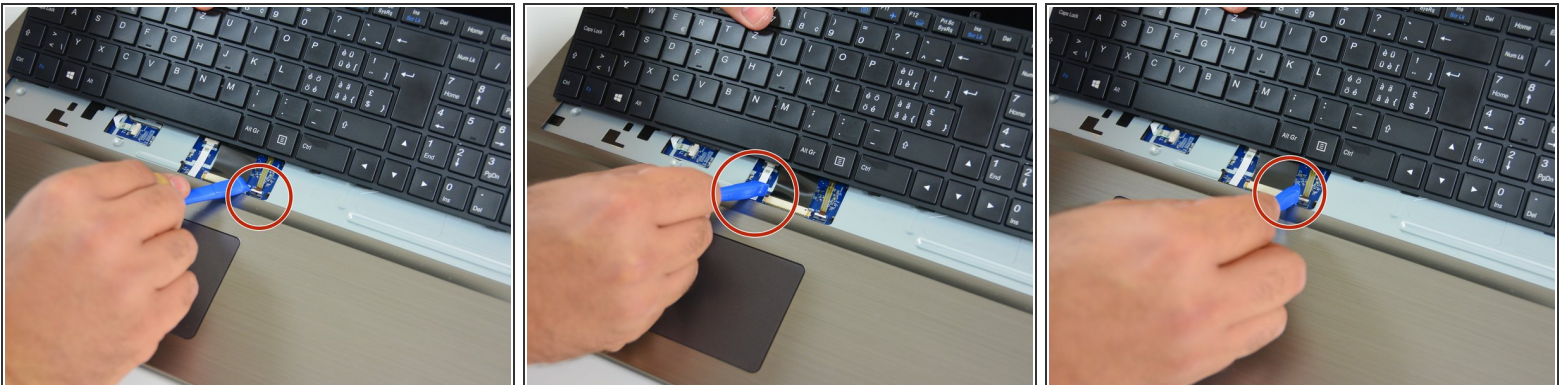
- After the cover strip is removed, you can see the tip of the screwdriver.
- Now locate the five fastening screws of the keyboard.
- Loosen these five screws.

## Step 5



- Lift the keyboard slightly and pull it slightly backwards.
- The connection cables are now visible.
- Now release the right lock on the plug of the keyboard light cable.

## Step 6



- Then the left lock.
- Now apply the same procedure to the plug of the main cable (left lock)
- Right lock.

## Step 7



- You can now remove the keyboard from its slot.

Repeat the steps in order to reassemble your device.