



why! W670SZQ1 HDD Hard Disk Replacement

Written By: Felice Suglia

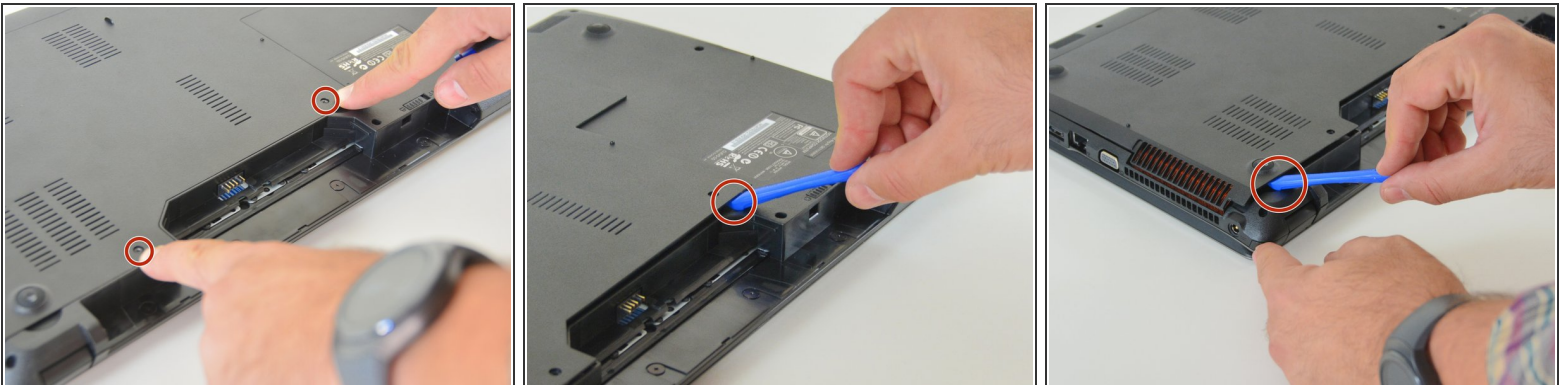


Step 1 — accumulator



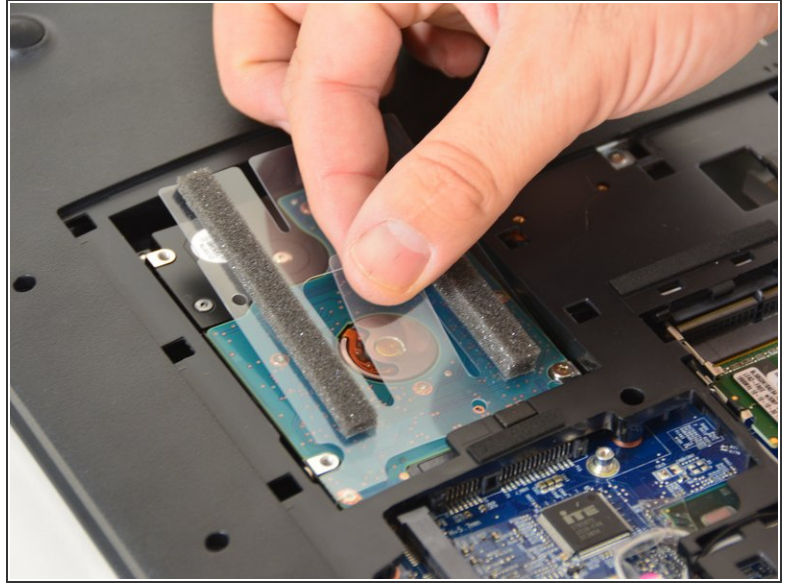
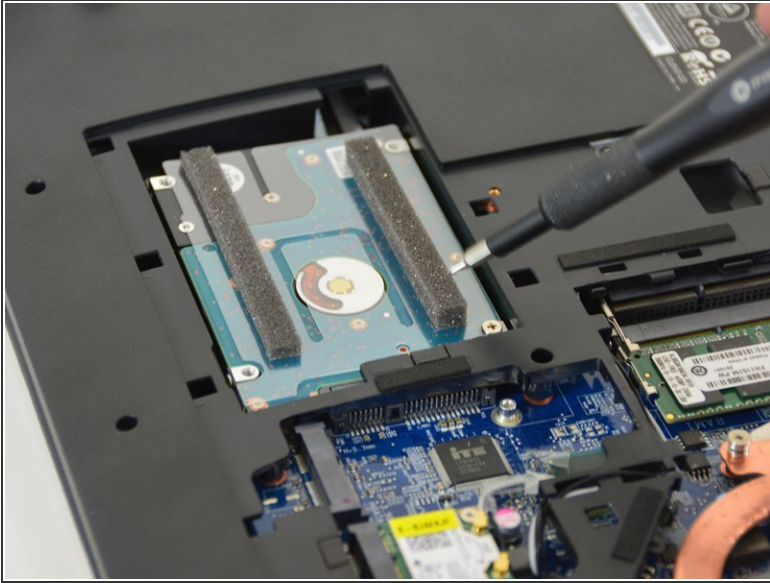
- Open the latch of the accumulator on the left side.
- Open the battery latch on the right side.
- Remove the accumulator by simultaneously holding the right-hand latch open.

Step 2 — Access to the most important components



- Use the Philips screwdriver to remove the two screws at the bottom of the cover.
- Lift the cover at the bottom right with the iFixit Opening Tool
- Lift the cover at the bottom left with the iFixit Opening Tool
- Finally, remove the cover to gain access to the most important components.

Step 3 — HDD hard disk



- Locate the HDD disk.
- Lift the plastic tab and pull the HDD hard drive out of its SATA connector.

Repeat the steps in reverse order to reassemble your device.