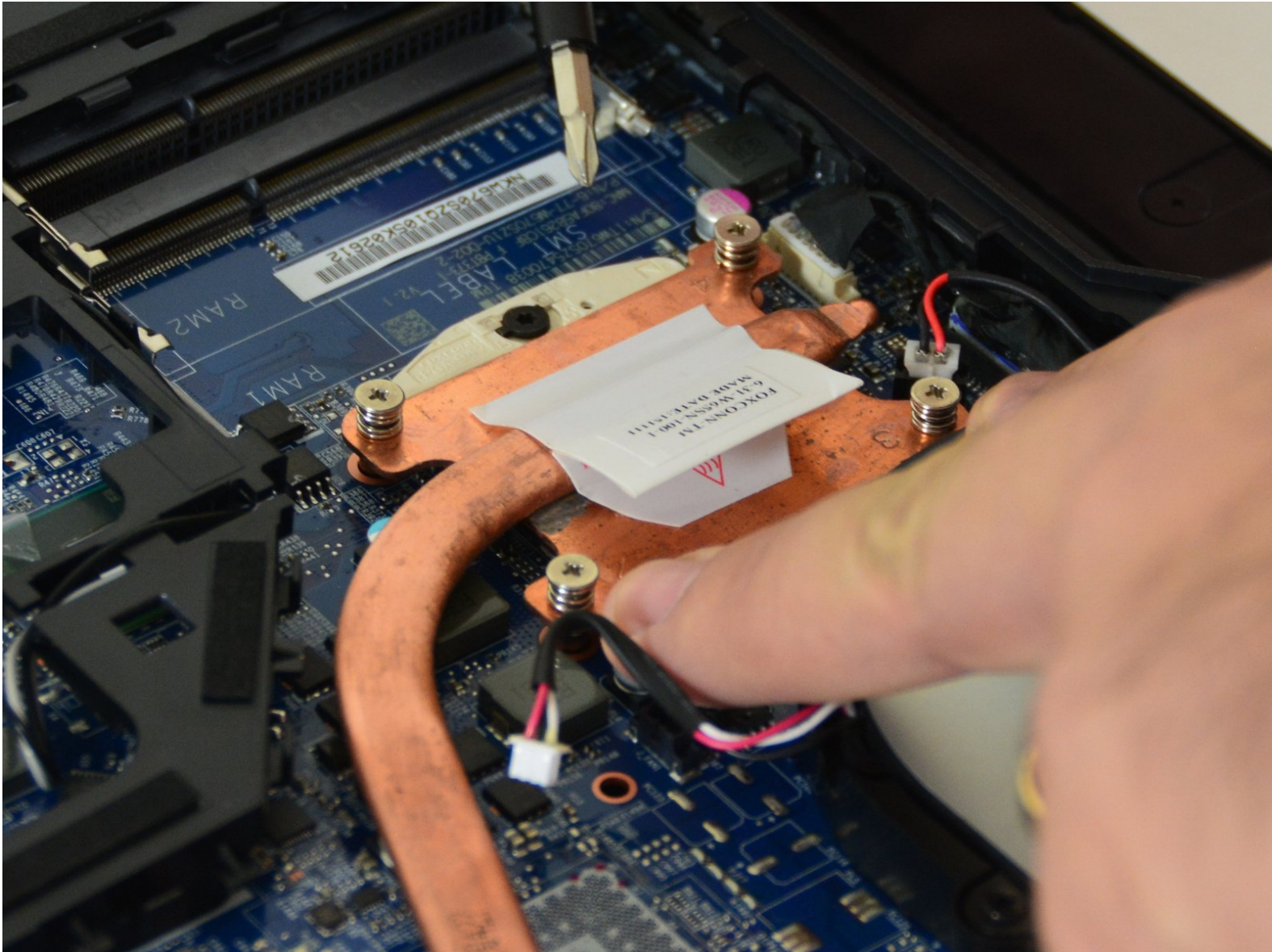




why! W670SZQ1 Processor Replacement

Written By: Felice Suglia





PARTS:

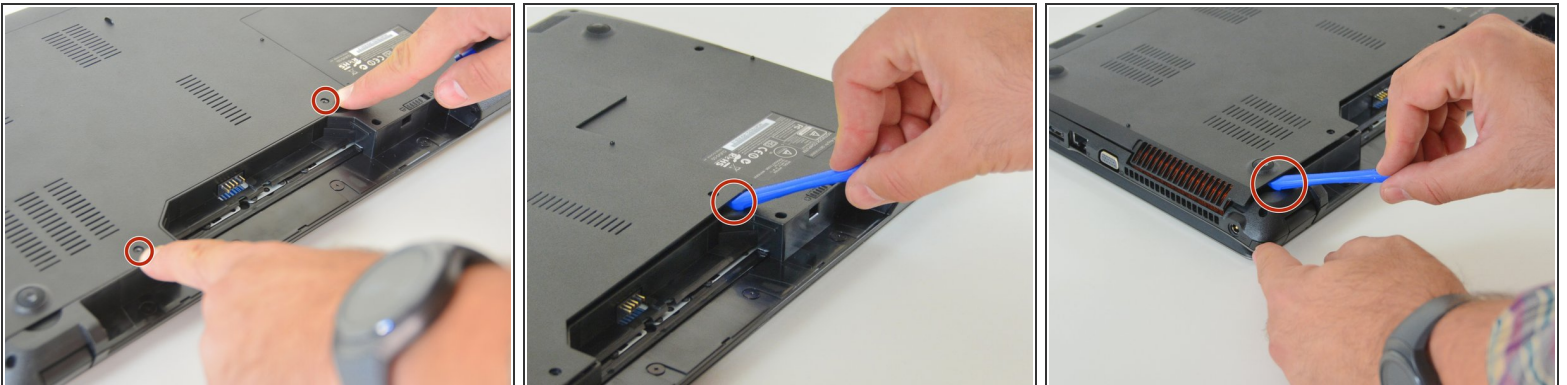
- [New Item](#) (1)
 - [New Item](#) (1)
-

Step 1 — The Batteries



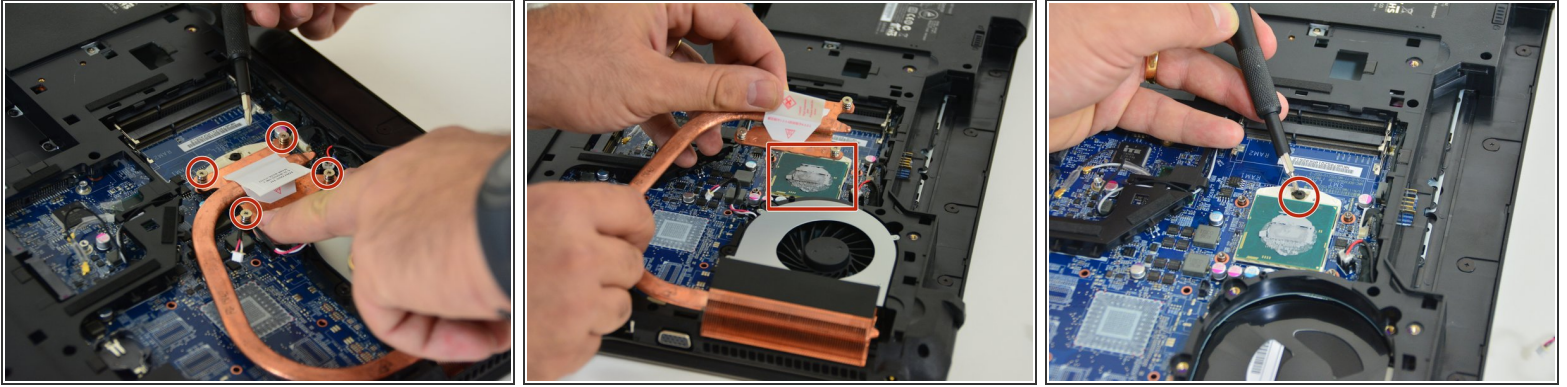
- Unlock the lock latch on the left.
- Unlock the lock latch on the right.
- Remove the battery while holding the lock latch unlocked.

Step 2 — Access to Major Components



- Using the Philips # 0 screwdriver, unscrew the 2 screws from the bottom cover.
- Lift the bottom right cover with the iFixit Opening Tool.
- Lift the lower left cover with the iFixit Opening Tool.
- Finally clear the bottom cover completely to access the main components.

Step 3 — The processor



- Using the Phillips screwdriver, unscrew the 4 screws holding the processor cooling radiator.
- Remove the cooling radiator. Once the radiator removed you can see the processor with its locking latch.
- Now unlock the processor with a small screwdriver. Then remove it gently.

To reassemble your device, follow the instructions in reverse order.