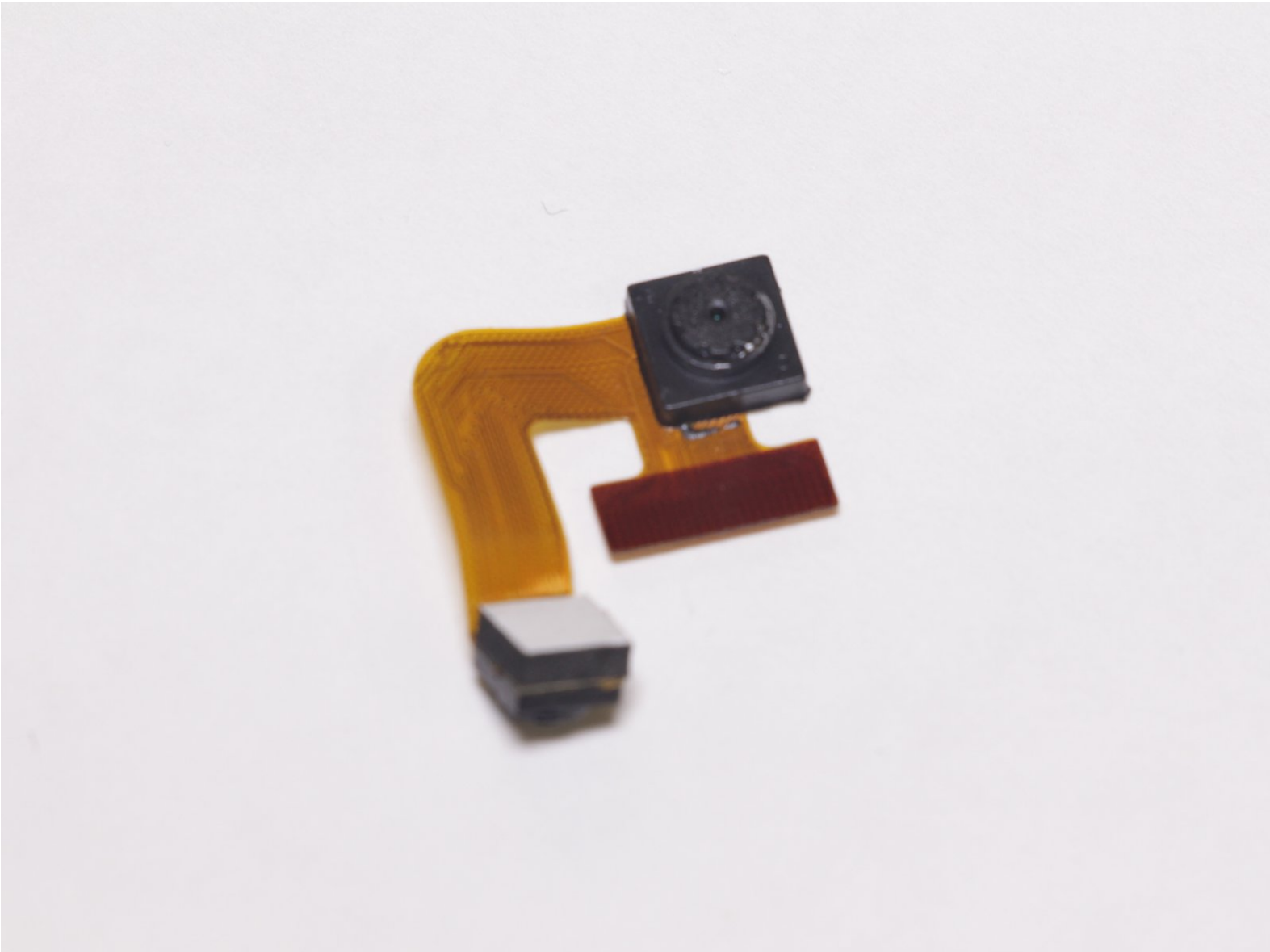




# RCA RCT6203W46 Rear Camera Replacement

In this guide, you will learn how to repair and replace the rear camera.

Written By: Grace Chung





---

## INTRODUCTION

In order to replace a broken front or rear camera, you will need to follow this guide. There are several steps and you will need to be careful when taking apart this device.



### TOOLS:

- [Phillips #00 Screwdriver](#) (1)
  - [Spudger](#) (1)
  - [iFixit Opening Tools](#) (1)
-



## Step 1 — Front and Rear Camera



- Make sure the device is off to reduce the chance of an electrical shock. To turn off the device, press and hold the power button.
- Use a Phillips #00 Screwdriver to unscrew the 4mm (5/32 in.) screws from the back cover of the tablet.



## Step 2



- Use a spudger to pry the back cover. Start from one edge of the back cover and slide across until the cover is lifted from the tablet body. Repeat for all edges.

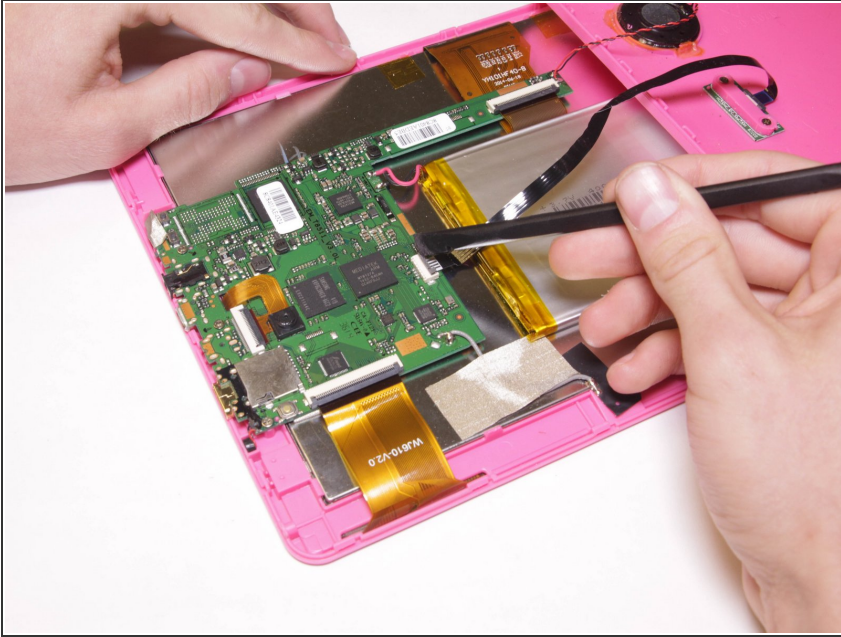
## Step 3



- Open the tablet cover carefully and slowly lengthwise.
- ⓘ The keyboard wire ribbon and rear speaker wire should be intact and connected with the back cover.
- ⚠ Opening the tablet abruptly may tear or damage cover attachments.

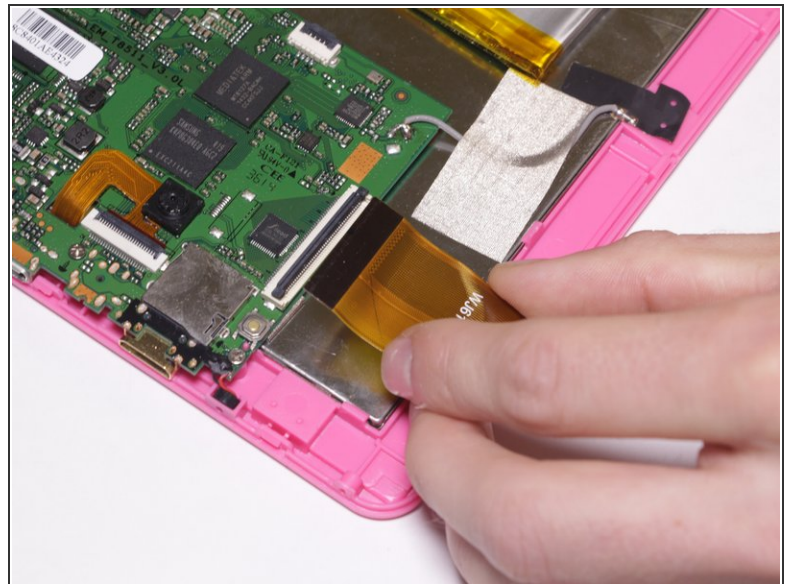
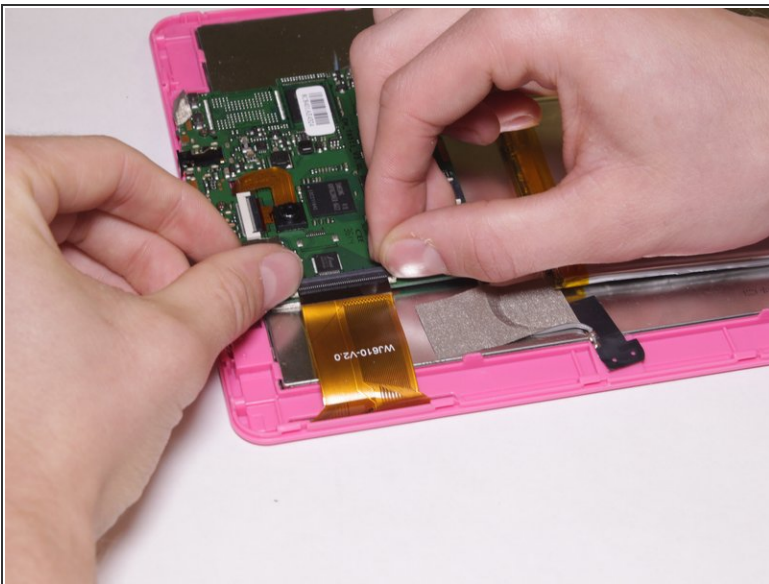


## Step 4



- Use a spudger to flip up the flap of the ZIF connector that holds the keyboard wire ribbon.
- Remove the wire ribbon from clamp.

## Step 5

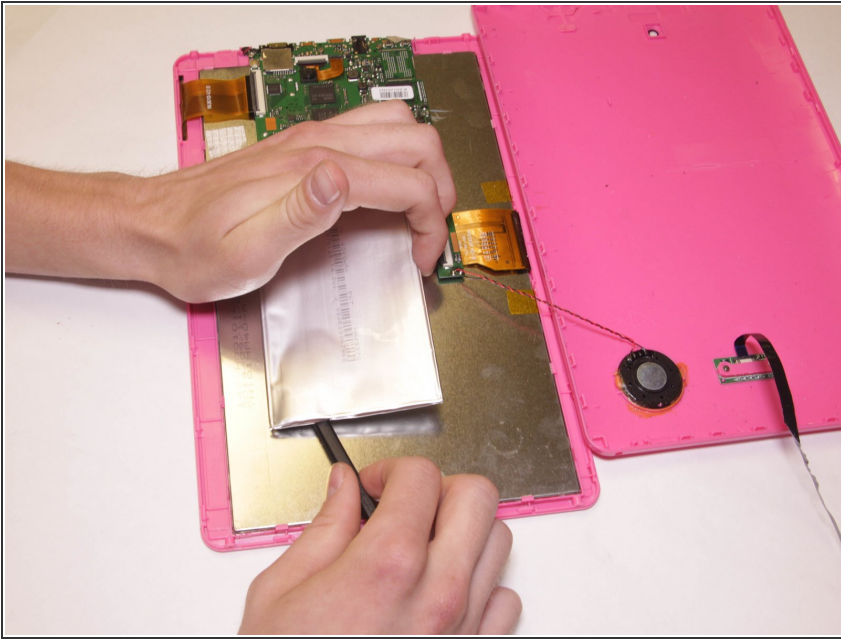


- Attached to the motherboard you will see two orange ribbons connected to black tabs.
- Using both hands, place your thumbs gently on the black tab attached to the top and gently lift it.
- Proceed to slide the orange colored ribbon out from underneath until it is detached from the black tab.

This document was generated on 2020-11-26 07:07:02 PM (MST).



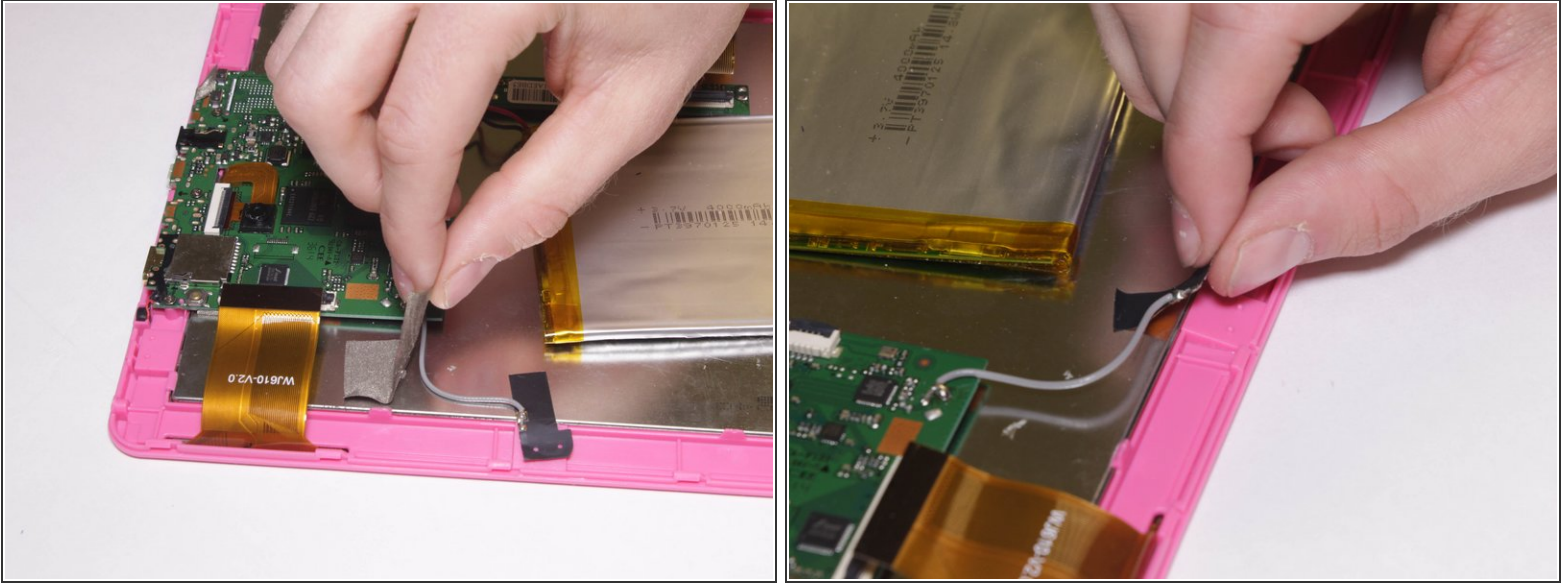
## Step 6



- Use a spudger to pry and slide underneath the battery to unstick it from the LCD metal plate. It may take a good amount of force to remove.
- Try to decrease battery deformation by using a spudger rather than prying with your hands.
- ⓘ Do not let battery fall back on adhesive, it will stick back onto the LCD metal plate.
- ⚠ Be careful to not puncture the battery. The battery may ignite or explode.

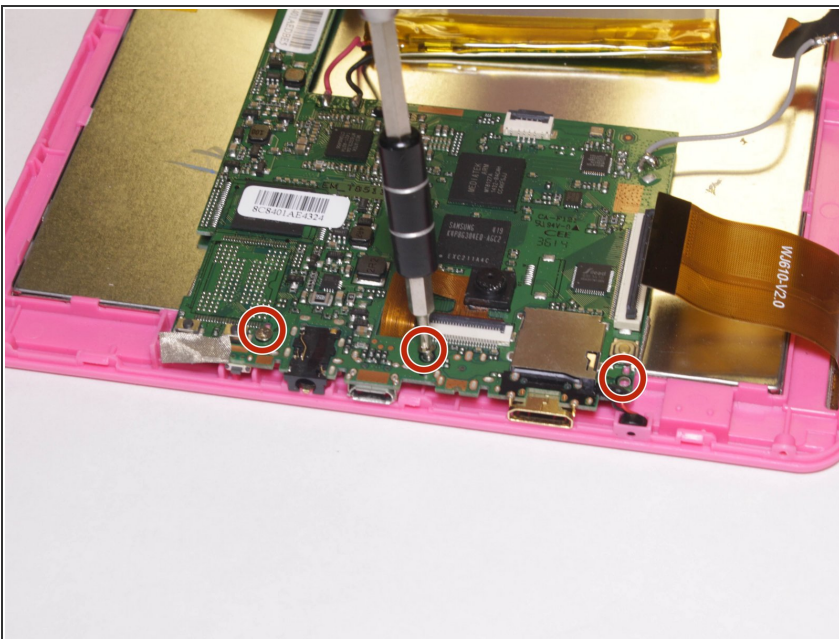


## Step 7



- Gently remove the grey tape that's covering the grey colored wire until it is completely peeled off.
- Peel off the black piece of tape to remove the antenna.

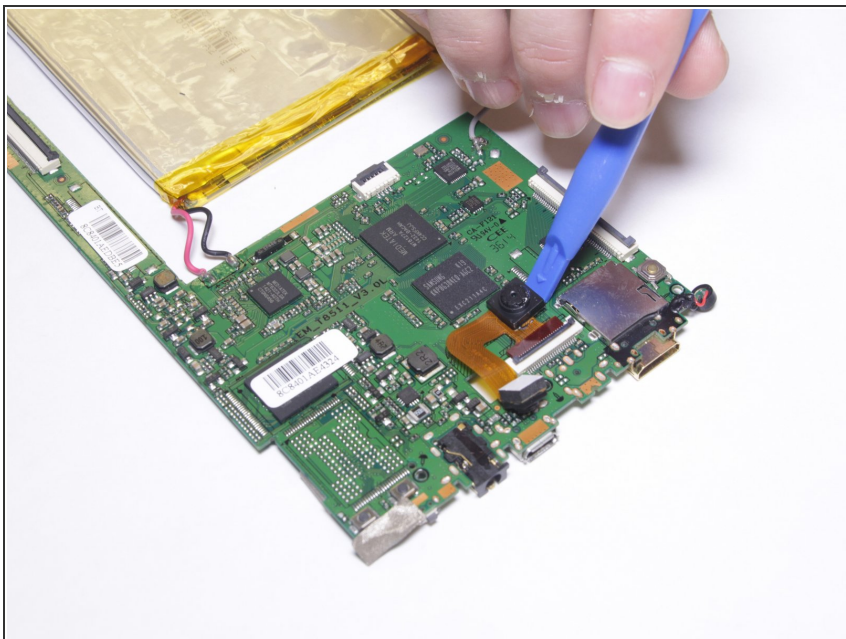
## Step 8



- Unscrew three of the 4 mm screws on the motherboard using a Phillips #00 screwdriver.
- After removing the screws, detach the motherboard from the rest of the tablet. Use a spudger to gently remove it, if necessary.

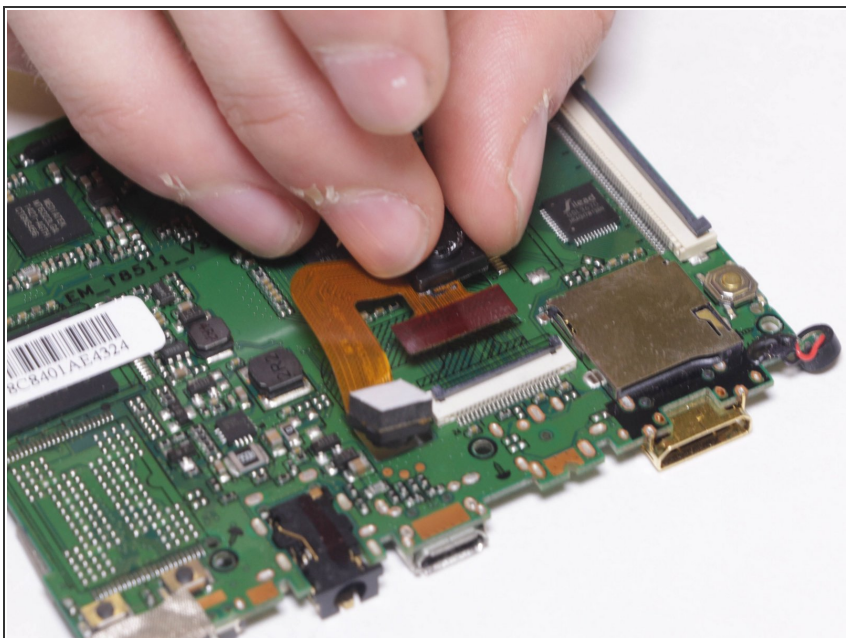


## Step 9



- Locate the rear camera and use a prying tool to gently lift the rear camera off of the motherboard.

## Step 10



- Detach the camera ribbon wire by lifting the tab and pulling the wire. This will leave you with the camera assembly.

To reassemble your device, follow these instructions in reverse order.