



# Hp Deskjet Ink Advantage 1515 Paper feeds halfway fix. Replacement

Written By: Samuel Githinji





## TOOLS:

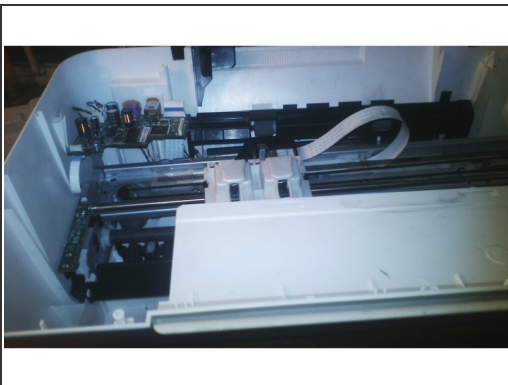
- [Mako Driver Kit - 64 Precision Bits](#) (1)
-

## Step 1 — Hp Deskjet Ink Advantage 1515 Paper feeds halfway fix. Replacement



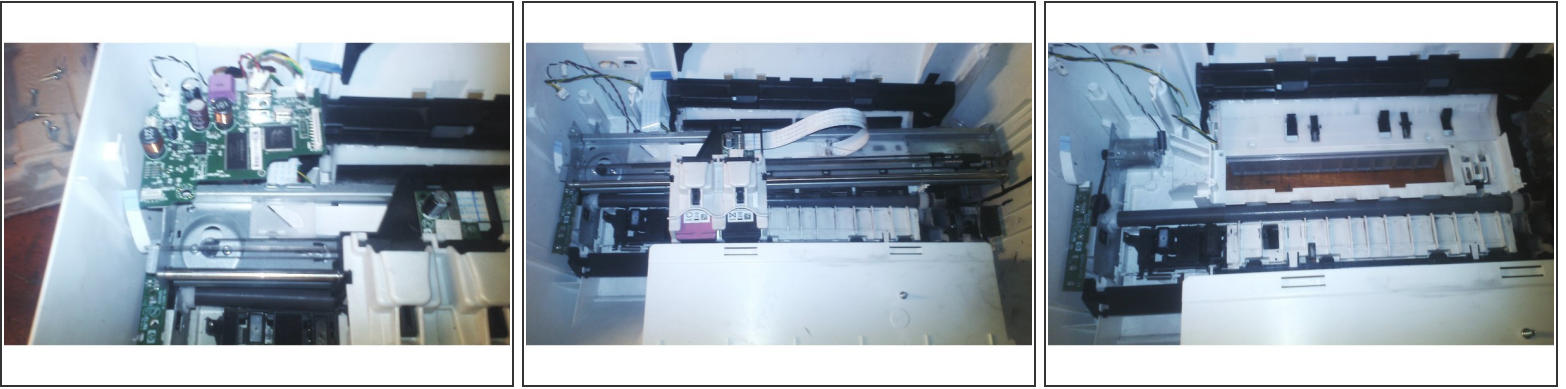
- Disconnect the printer from power source and then open the photocopy/scanner door.
- You will see four screws on the ends. Unscrew them with the necessary equipment.
- Carefully lift the top of the printer. Lift the back first near the paper tray to expose the interior of the printer.

## Step 2



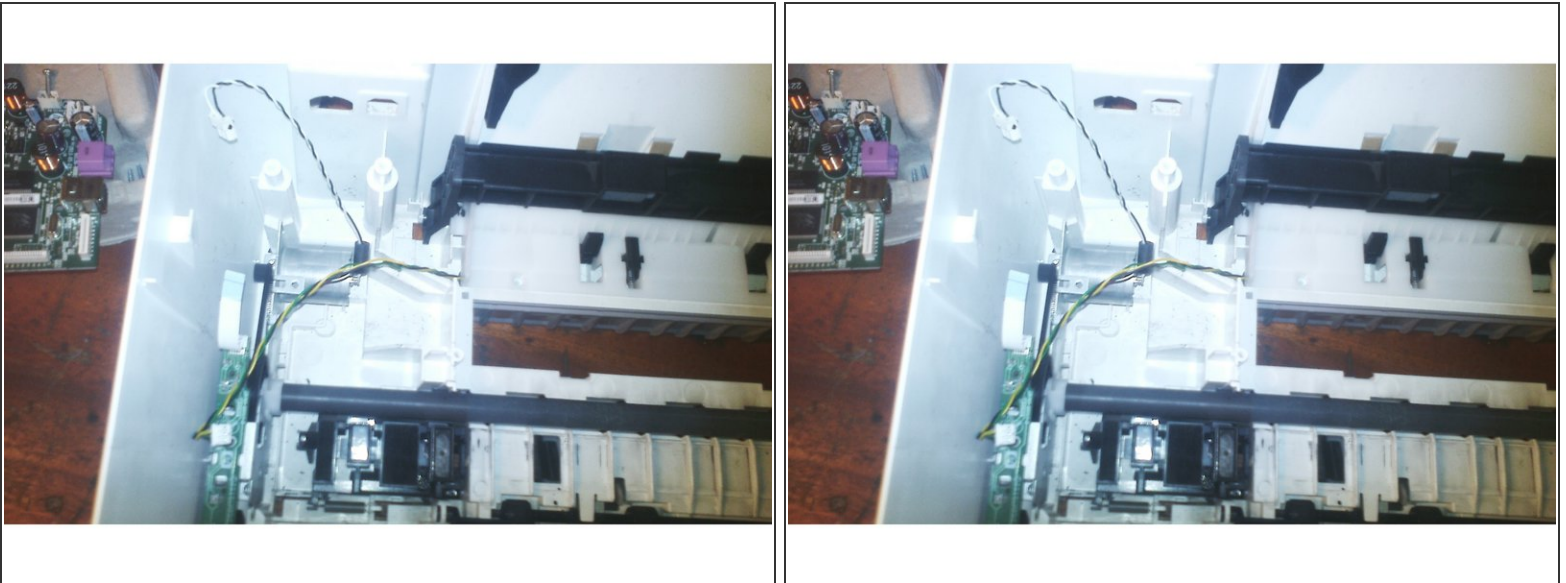
- Slowly remove the cables that are connected to the motherboard and the sensor.
- Now remove all other cables connected to the motherboard as shown.
- Unscrew the motherboard by removing three screws.

### Step 3 — Remove ink cartridge to expose all cables.



- Unscrew the three screws one on the upper side on the left and two that are in the middle of the cartridge belt mover.
- Remove it to expose the cables.

### Step 4 — Check for broken cables.



- As you can see in this case my printer has broken cables. The yellow, green and black cables are broken.
- Replaces the cables. It is also important to check the sensor cable.

## Step 5 — Reassemble your printer.



- After replacing any broken cables, reassemble your printer starting with the printer mover rail.
- Screw it tightly into place.
- Screw the motherboard into place tightly.
- Ensure everything is in place.
- Your printer should work just fine.

To reassemble your device, follow these instructions in reverse order.