



# HTC Maple 100 Internal Ear Speaker Replacement

How to remove the internal ear speaker used during calls.

Written By: Alyssa Thompson



## INTRODUCTION

This guide shows how to remove the internal ear speaker used during phone calls. You might want to replace this if call quality has significantly dropped or if there is no sound.

---

### TOOLS:

- [Phillips #00 Screwdriver](#) (1)
  - [iFixit Opening Tools](#) (1)
  - [T6 Torx Screwdriver](#) (1)
-

## Step 1 — Battery



- First remove the back cover of your phone to expose the battery.

## Step 2



- Turn the phone over.
- Push forward on the battery with your thumb.

## Step 3



- Take the battery out by lifting it upwards.
- ☑ When reassembling, make sure that the battery contacts match up.

## Step 4 — Back Panel



- Remove the four 4.9mm T6 Torx screws that secure the back panel to the rest of the phone.



## Step 5



- Remove the two 4.3mm Phillips #00 screws that secure the back panel to the rest of the phone.

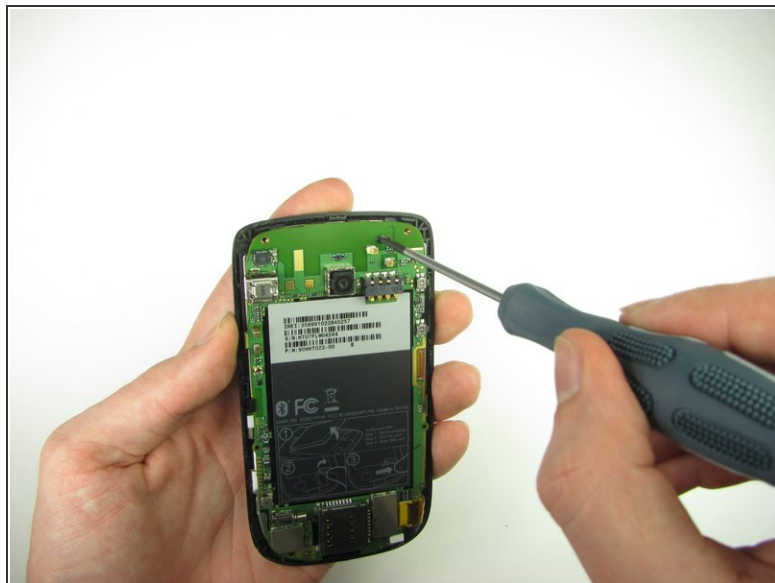
## Step 6



- Insert the plastic opening tool along the seams at different points to it pry the clips off.

 This may require a bit of force. The USB port cover may fall off in this step.

## Step 7 — Motherboard



- Remove the one 3.3mm Phillips #00 screw.

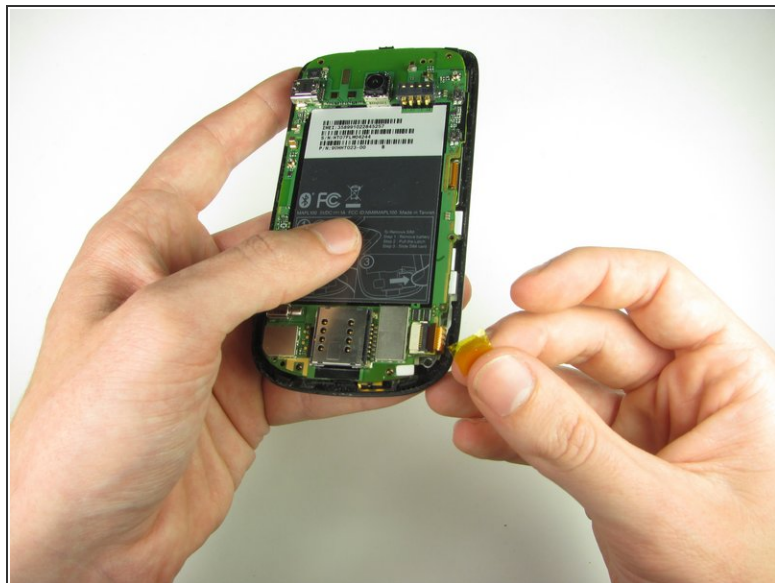
## Step 8



- Use your finger or the plastic opening tool to unclip the board.

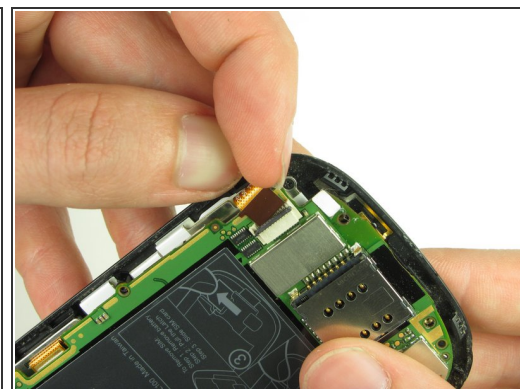
⚠ Be aware of the ribbon cable connected to the motherboard inside the phone.

## Step 9



- Peel off the yellow piece of tape from the phone.

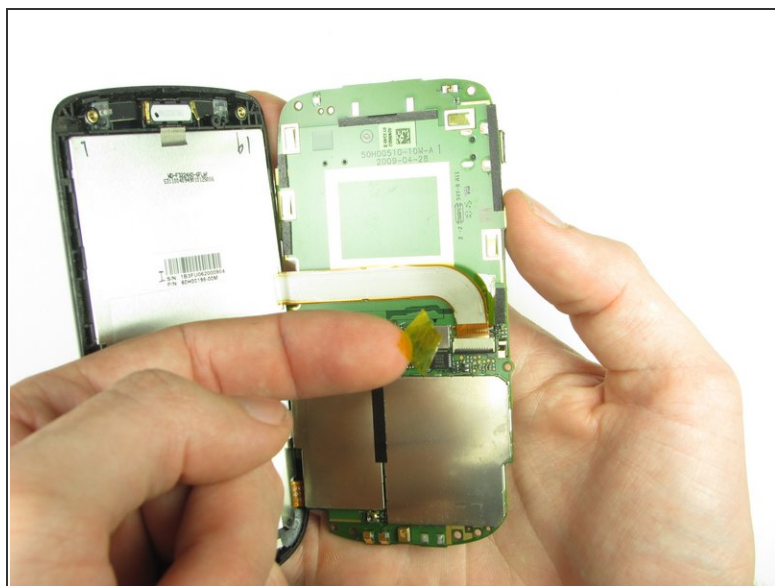
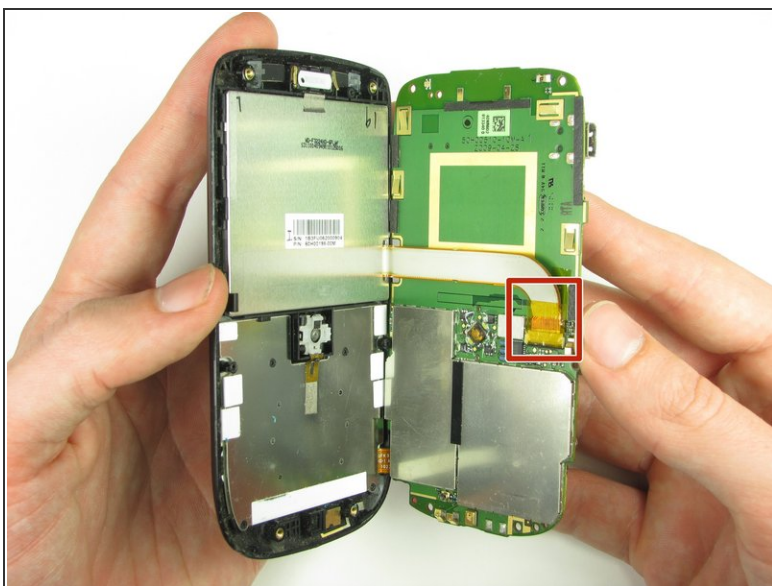
## Step 10



- Flip up the retaining flap with your fingernail or a plastic opening tool.
- Pull on the ribbon cable gently with your fingers.

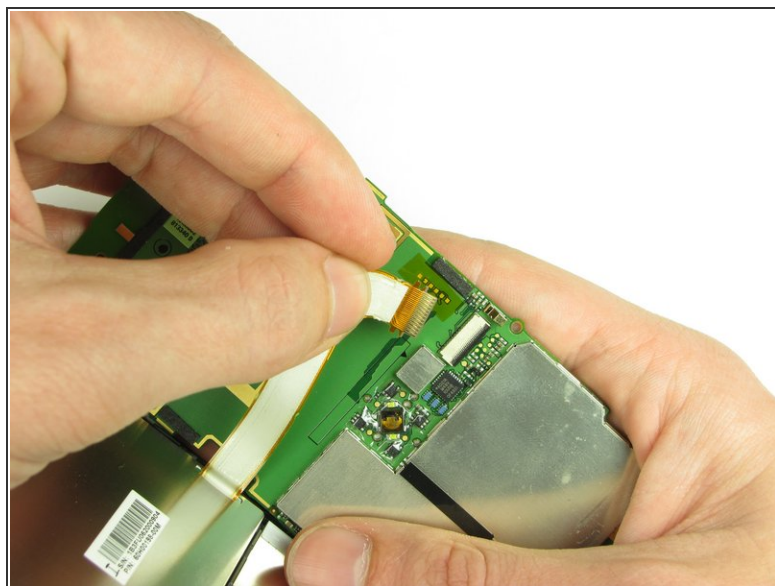
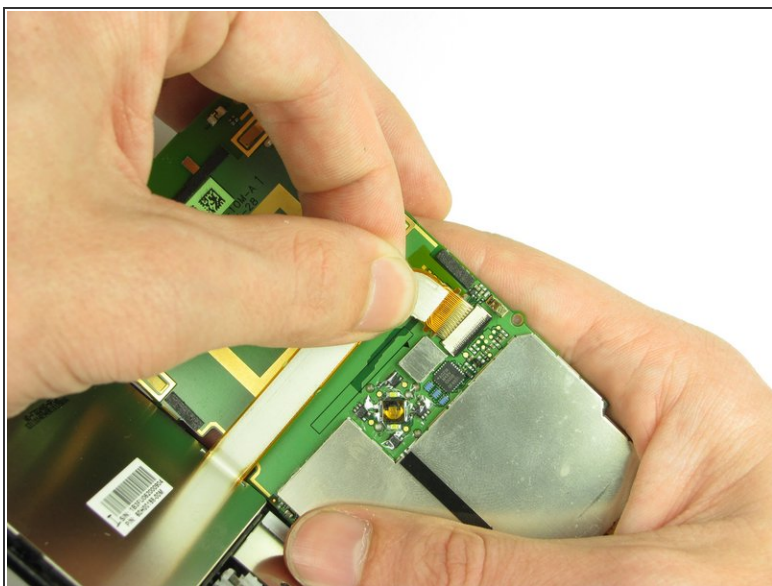


## Step 11



- Split apart the motherboard and front panel.
- Remove the other yellow piece of tape off of the end of the ribbon cable.

## Step 12



- Gently pull on the ribbon cable to separate the motherboard.



## Step 13 — Internal Ear Speaker



- Locate the internal speaker at the top center of the phone.

## Step 14



- Using the plastic opening tool, carefully pry out the internal speaker.

To reassemble your device, follow these instructions in reverse order.