



HP 310-1037 Hard Drive Replacement

Very straight forward repair with only a few common tools.

Written By: oldturkey03



INTRODUCTION

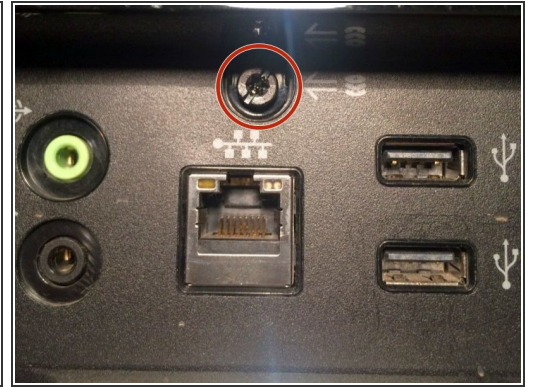
Here is a HP 310-1037 with a failed hard drive. The Hitachit 1TB hard drive is a common item to fail. The repalcement is very easy and not hidden screws or adhesive. All that is needed is a flathead screwdriver and a Phillips screwdriver.



TOOLS:

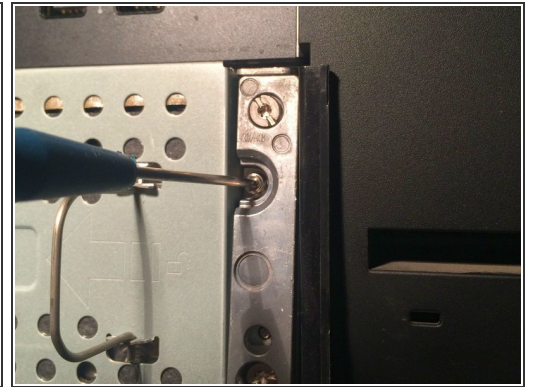
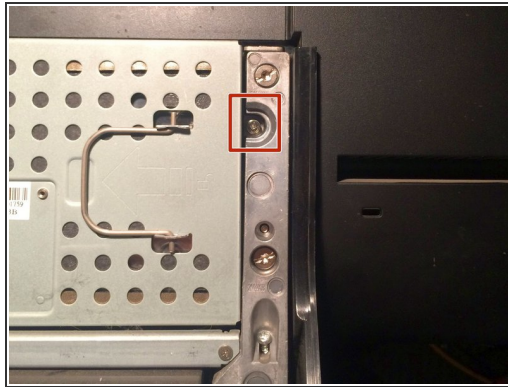
- [Flathead Screwdriver](#) (1)
 - [Phillips #0 Screwdriver](#) (1)
-

Step 1 — Hard Drive



- HP310-1037 Touchsmart PC with a dead hard drive. The hard drive is located behind the stand cover.
- Lay the PC flat on the front to gain access to the stand cover
- Remove the single screw that holds the stand cover to the chassis with a flat tip screwdriver

Step 2



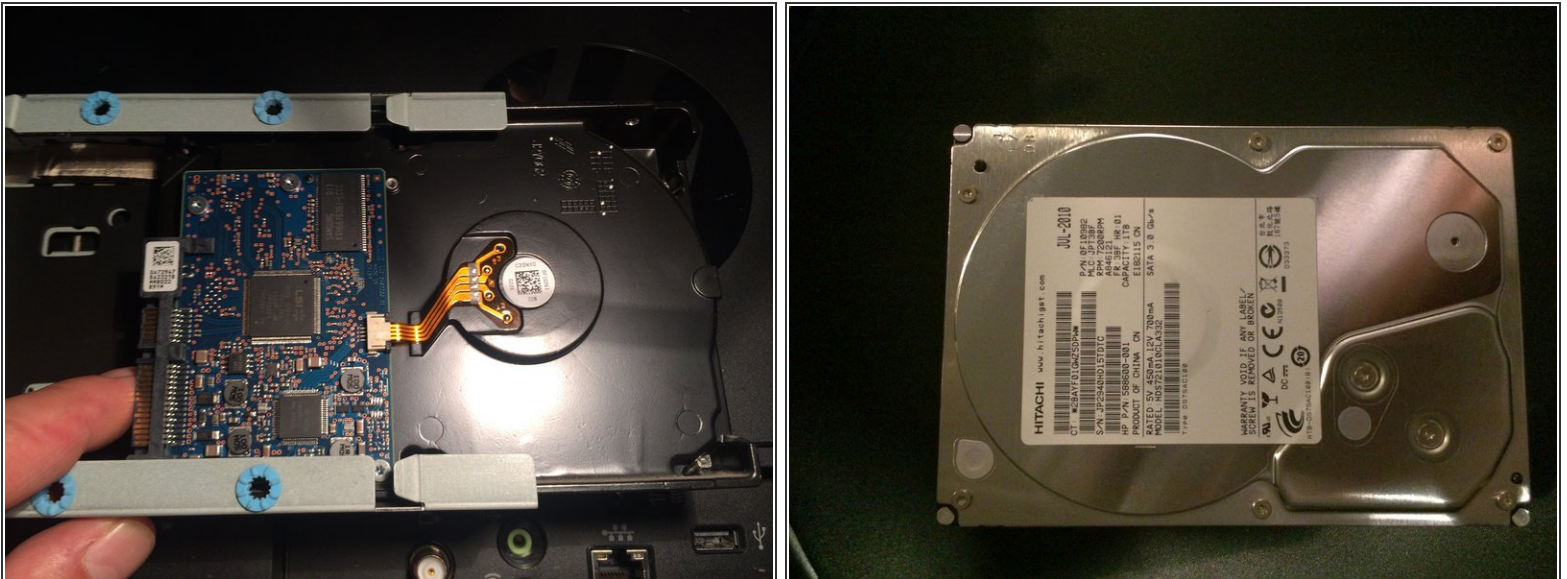
- Remove the stand cover
- The hard drive caddy is held in place with 1 Phillips screw
- Use a #0 Phillips screwdriver to remove that screw

Step 3



- Lift the handle on the hard drive caddy
- and pull it to the backside. This will remove the hard drive caddy from the computer.
- To remove the hard drive from the caddy, turn it over. There are four Phillips screws that hold the hard drive in place.

Step 4



- Once the four screws are removed, slide the hard drive out of the caddy.
- Here is the failed drive. It is a Hitachi HDS721010CLA332. Failure with this drive is all too common.

To reassemble your device, follow these instructions in reverse order.