



LG Optimus Disassembly

This is how to disassemble a LG Optimus

Written By: Logan



INTRODUCTION

This is how to disassemble a LG Optimus



TOOLS:

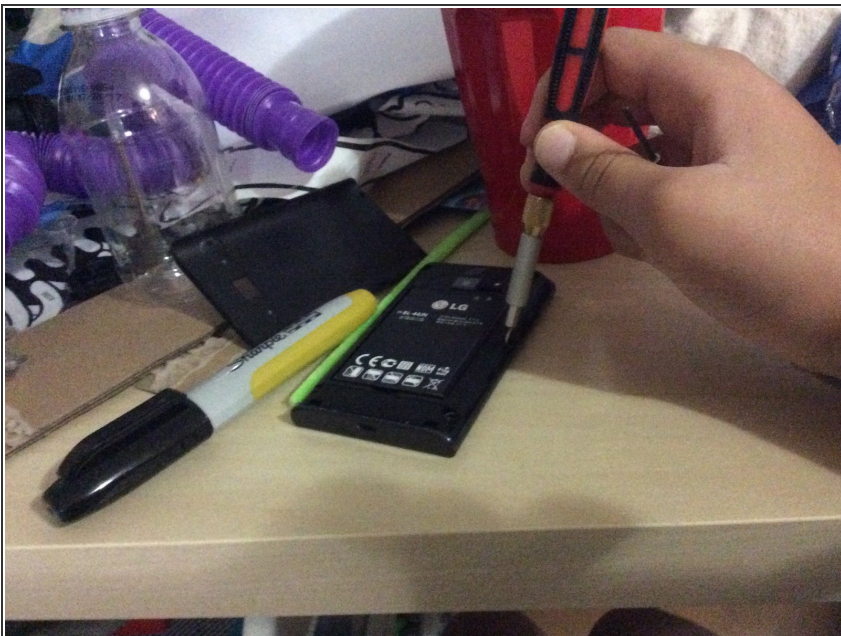
- [Essential Electronics Toolkit](#) (1)
-

Step 1 — LG Optimus Disassembly



- Use your prying tool to open the battery compartment.

Step 2



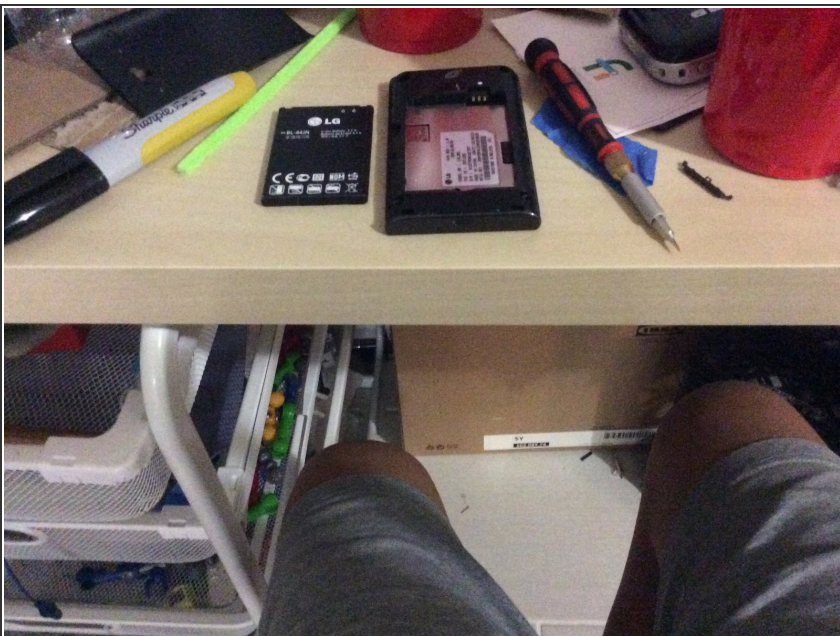
- Take out 6 screws.

Step 3



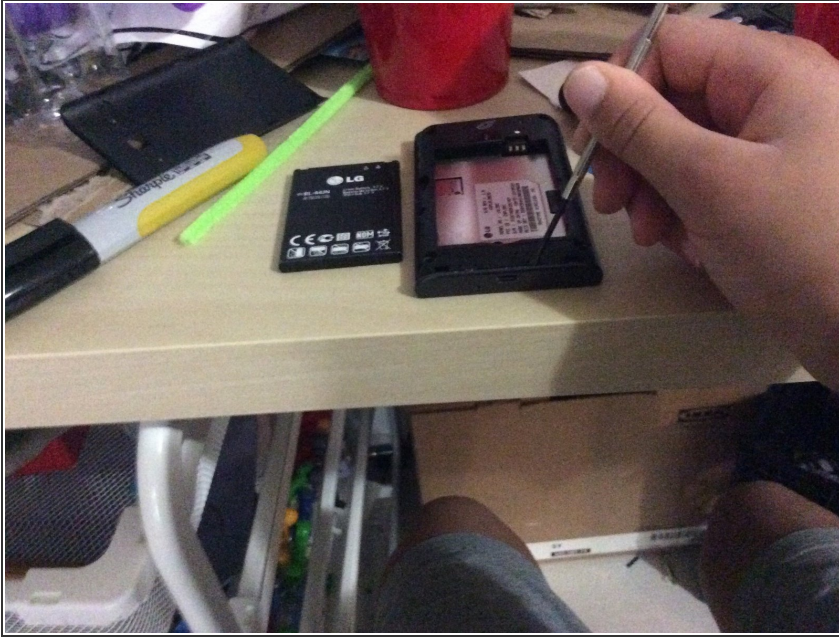
- Pry out the battery carefully.

Step 4



- Put the battery somewhere safe away from sharp things and baby's.

Step 5



- Pry the phone open.

Step 6



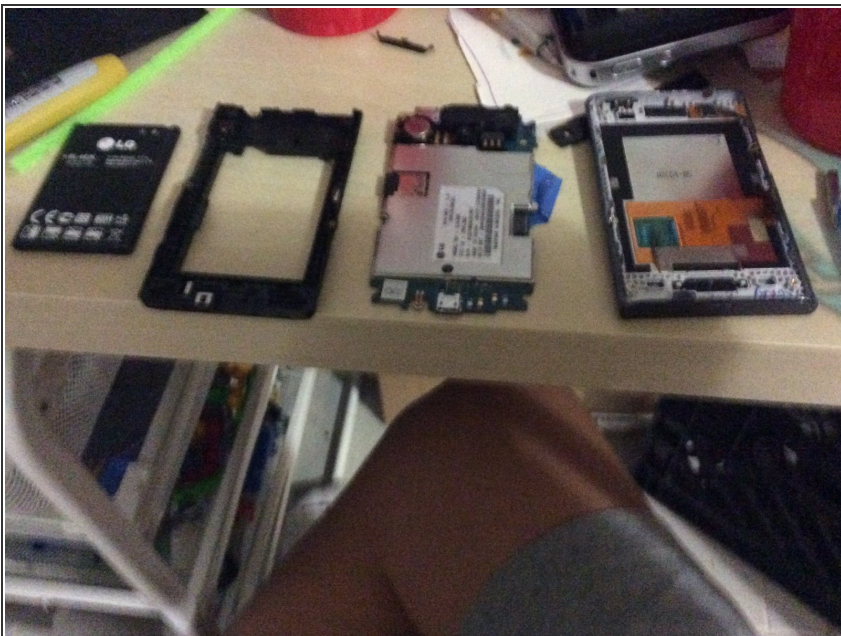
- Put the motherboard cover away from the battery.

Step 7



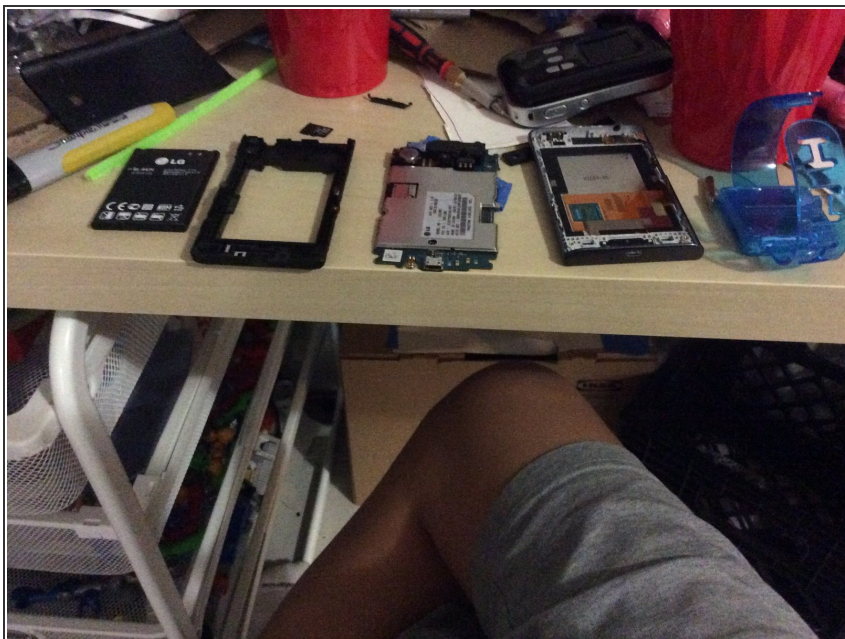
- Disconnect the 2 cables from the motherboard.

Step 8



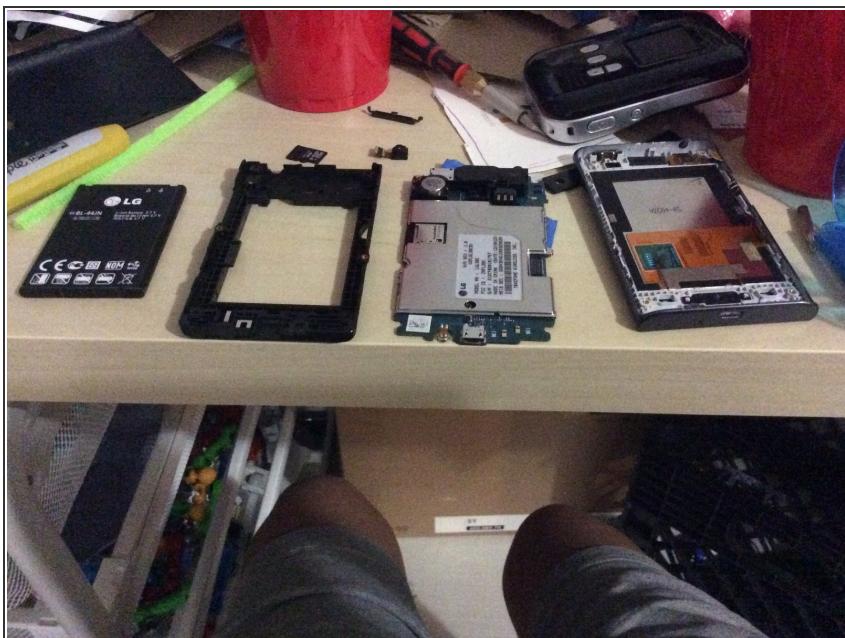
- Put the motherboard somewhere safe.

Step 9



- Take out the SD card.

Step 10



- Disconnect the rear facing camera then you are done.

To reassemble your device, follow these instructions in reverse order.