



# GE Wired Optical Mouse Disassembly

GE Mouse 14407/8 (Silver / Black) disassembly for cleaning etc

Written By: bradjsherman





## TOOLS:

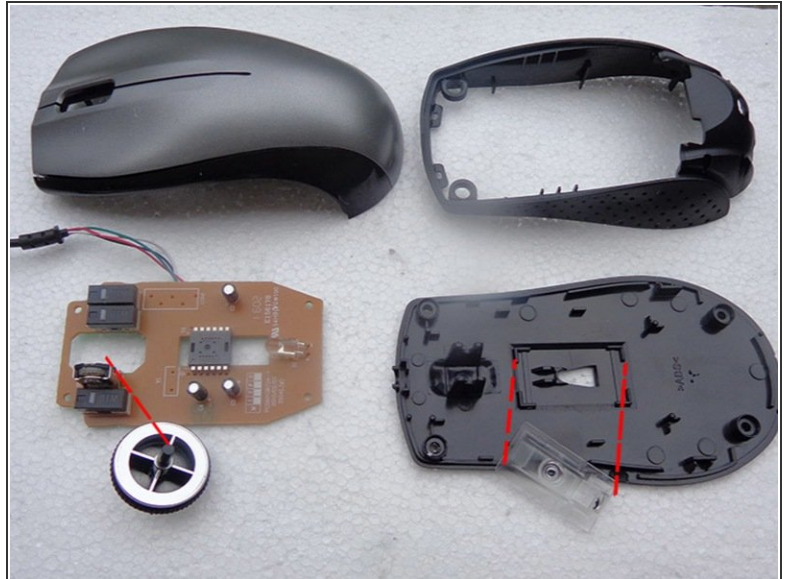
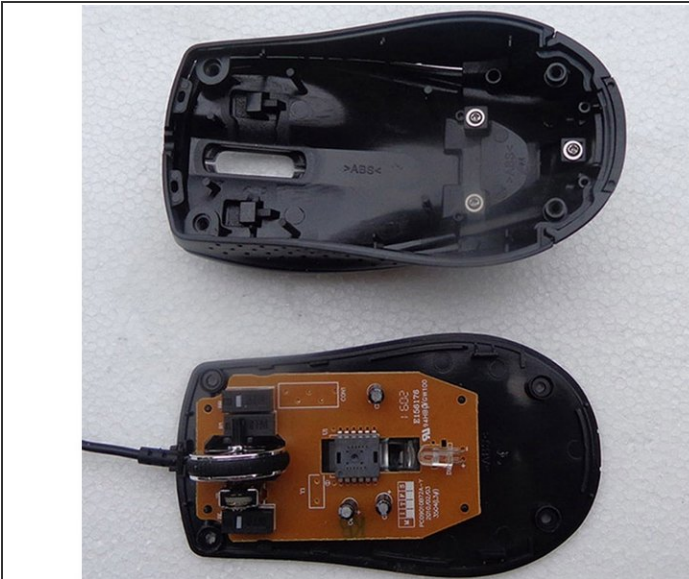
- [Small Phillips Head Screwdriver](#) (1)
  - [Xacto Knife, or Razor Blade](#) (1)
-

## Step 1 — Remove vinyl pads on bottom (circled) followed by 4 screws



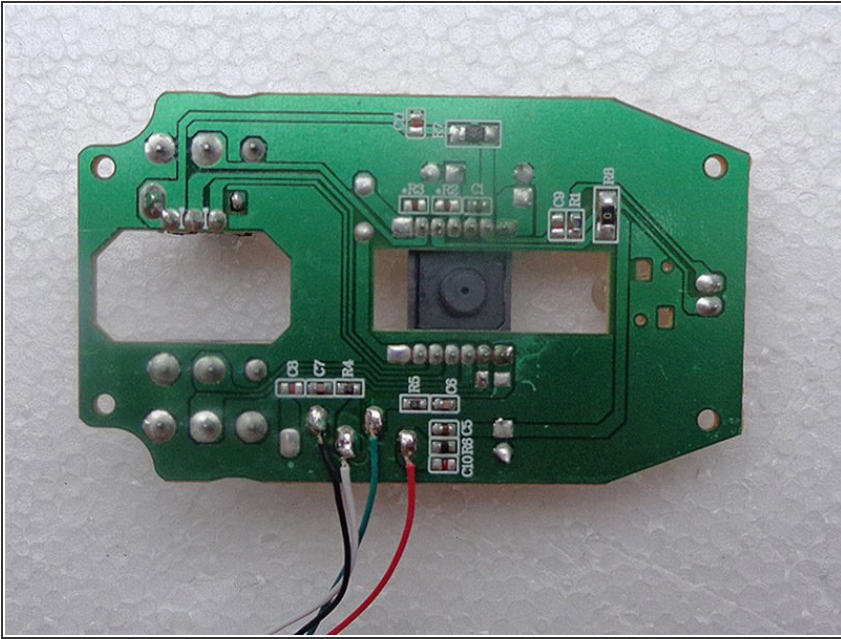
- Insert wisdom here.

## Step 2 — Pull apart. Button half will slide out of the shell it sits in. Mouse wheel slides out and control board pops off base.



- Insert wisdom here.

### Step 3 — Bottom of control board reference



- Insert wisdom here.

To reassemble your device, follow these instructions in reverse order.